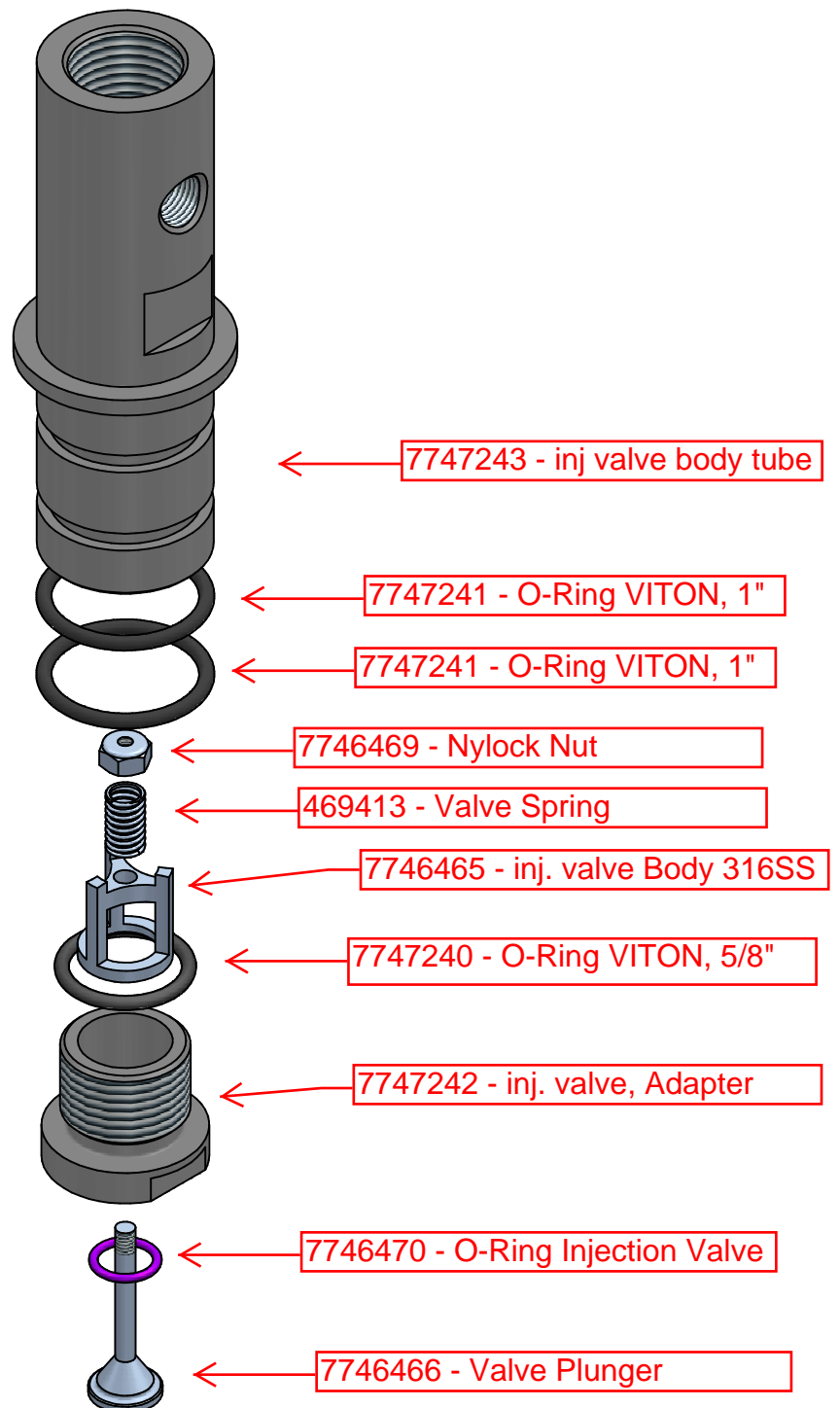


# PROMIX "C", "M" & "S" SERIES INJECTION VALVE CLEANING PART NUMBER 7747244

06/03/14 REV 0 GJS



The following is the recommended list of tools required to replace the mechanical seal:

1. 5/16" socket wrench
2. Small flat head screw driver
3. Small crescent wrench
4. O-ring lubricant

1. Disconnect power to the polymer injection pump.
2. Open the bleed valve on the injection to relieve the pressure. Drain as much polymer as possible from the tubing into a suitable container.
3. After draining the the tubing close the bleed valve.

For Promix C and S systems go to step 4a and step 14a.

For Promix M systems go to step 4b and step 14b.

The injection valve assembly as used on the Promix C and S will be used for all remaining steps but all the remaining steps are the same for all systems.

- 4a. Using a crescent wrench, loosen the Jaco fitting and remove the tubing from the fitting.

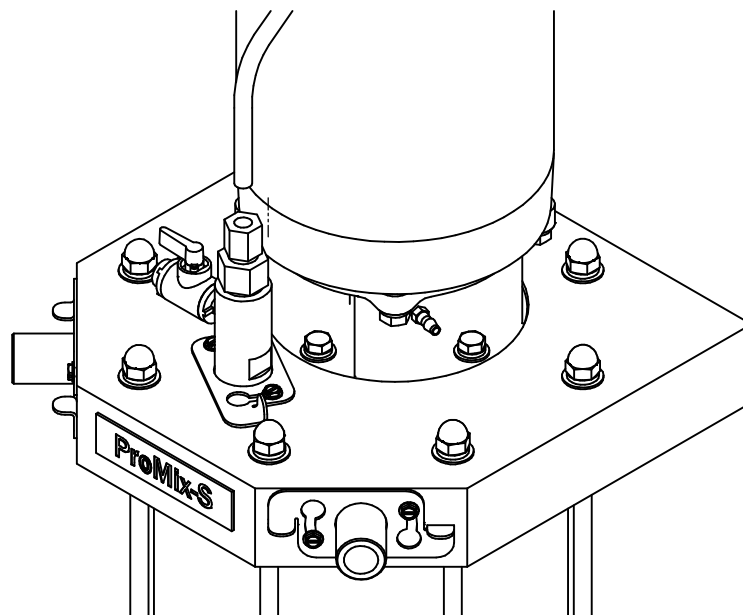


FIGURE 1a

4b. Using a flat head screw driver or 5/16" socket wrench, loosen the hose clamp and remove the hose from the injection valve hose barb.

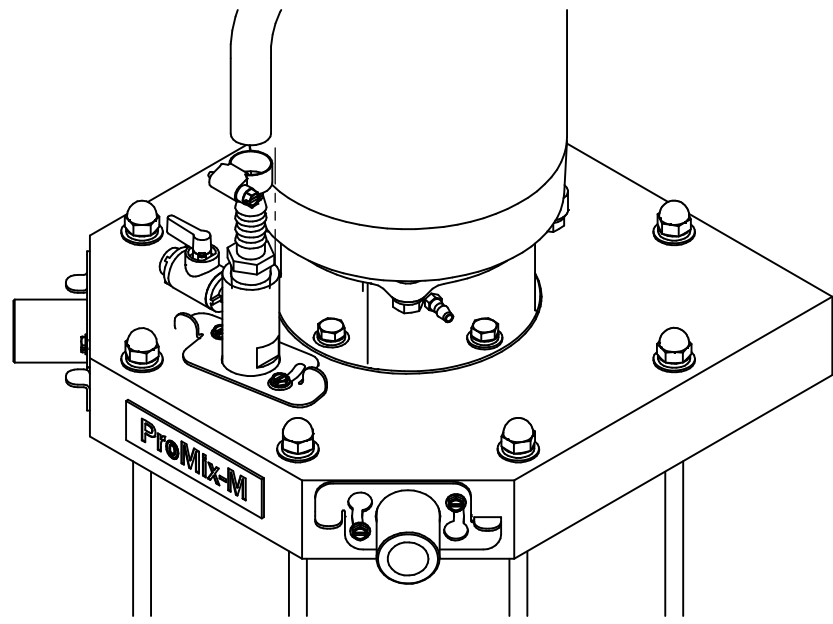


FIGURE 1b

5. Using a flat head screw driver or a 5/16" socket wrench, loosen the (2) hex head screws securing the injection valve retainer to the top plate just enough for the retainer to move freely. Do not remove the screws from the top plate.

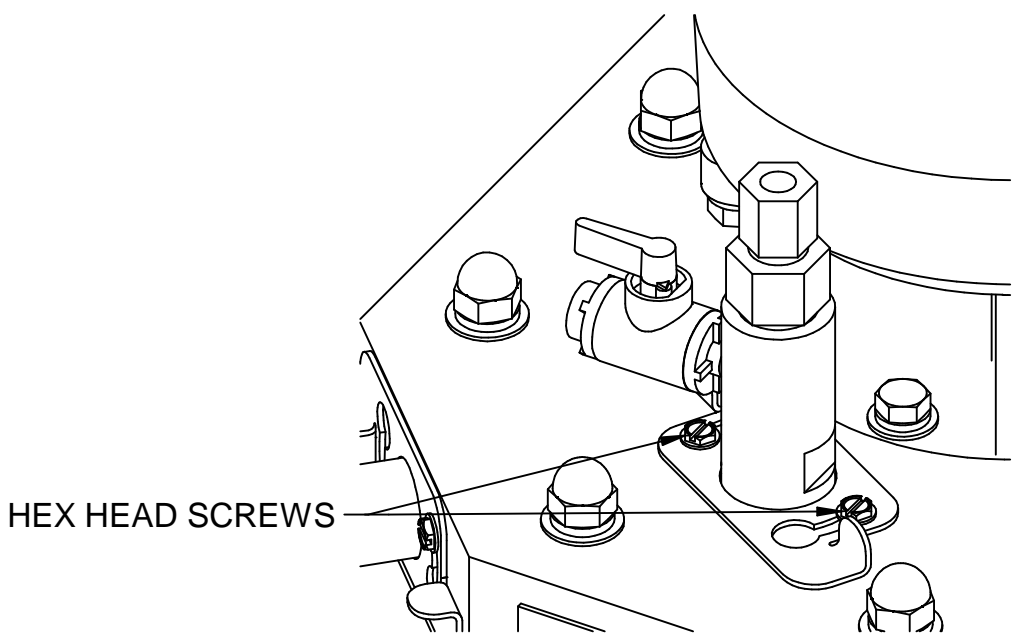


FIGURE 2

6. Turn the injection valve retainer counter clockwise until the retainer can be disengaged from the (2) hex head screws.

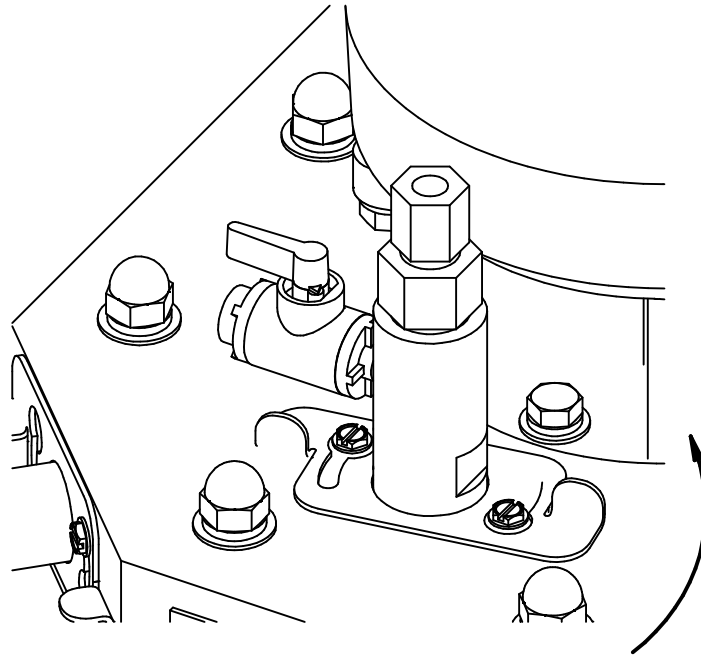


FIGURE 3

7. Remove the entire injection valve assembly and injection valve retainer from the top plate. This may require some effort since this is a tight fit. Do not use the bleed valve as a handle to remove the injection valve assembly.

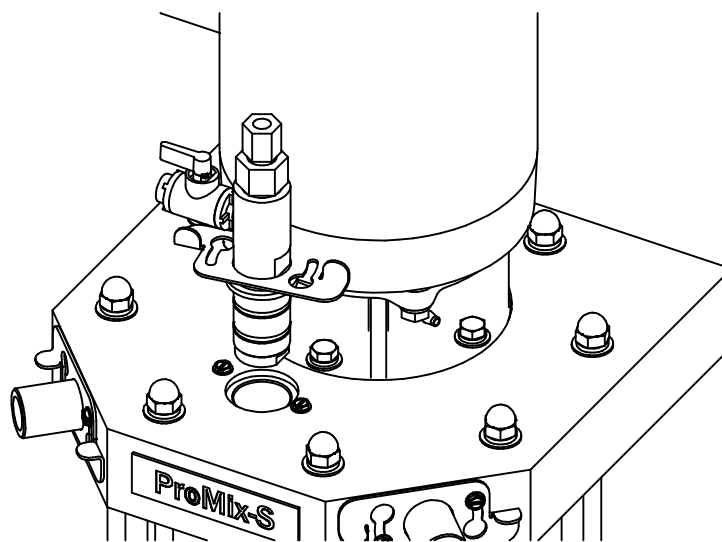


FIGURE 4

8. Using a crescent wrench, remove the injection valve adapter assembly from the injection valve body.

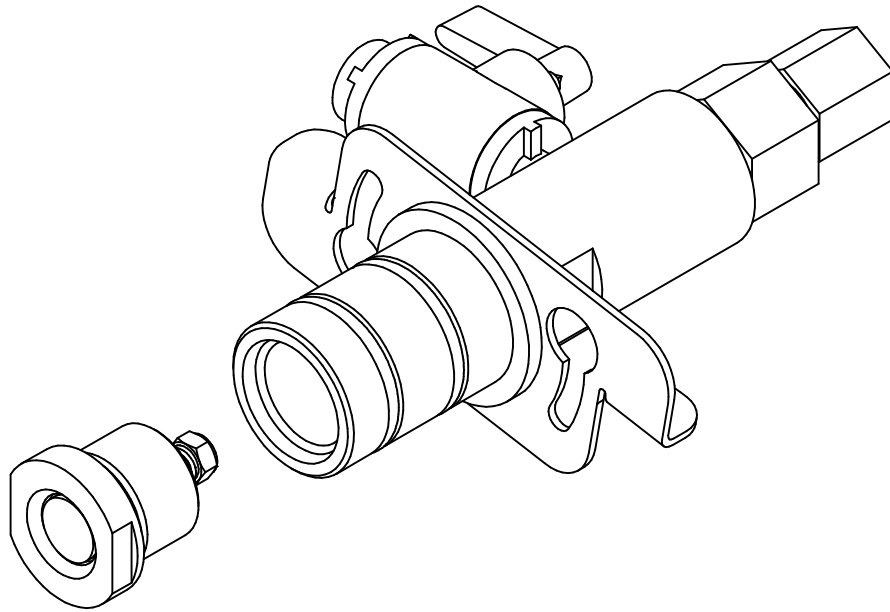


FIGURE 5

9. Clean the valve body and the valve adapter assembly under warm water until the polymer is clear. Press the injection valve open and check the o-ring for damage and replace if necessary with o-ring part number 7746470. No further disassembly of the valve is required to replace the o-ring.

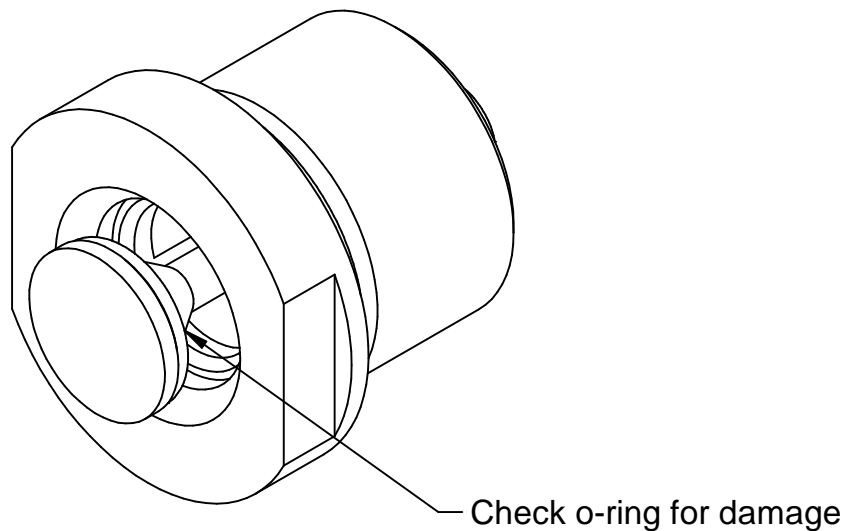


FIGURE 6

10. Inspect the injection valve adapter assembly o-ring for damage and replace if necessary with o-ring part number 7747240. Reinstall the injection valve adapter assembly into the injection valve body.

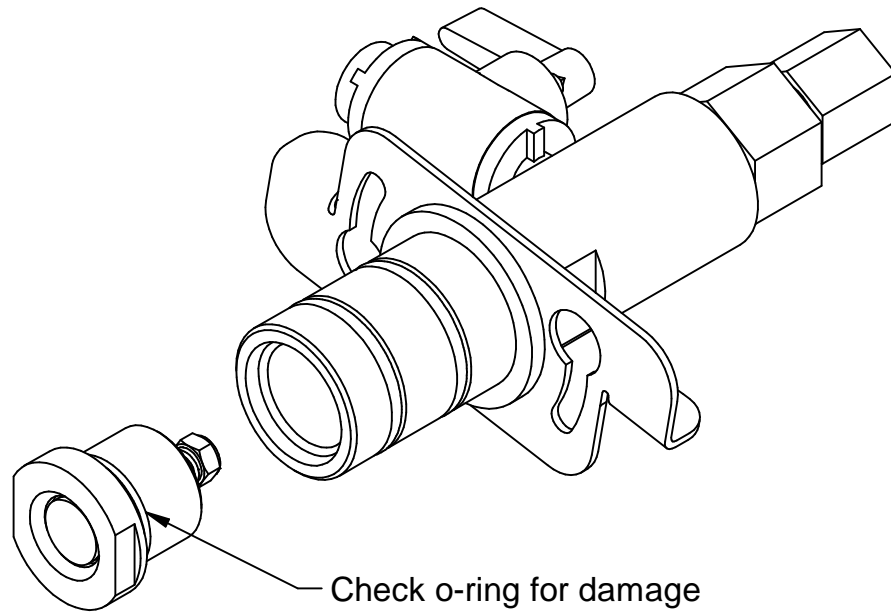


FIGURE 7

11. Inspect the injection valve assembly o-rings for damage and replace if necessary with o-ring part number 7747241. Apply a liberal amount of o-ring lubricant to the injection valve assembly o-rings and insert the injection valve assembly into the top plate. This may require some effort since this is a tight fit.

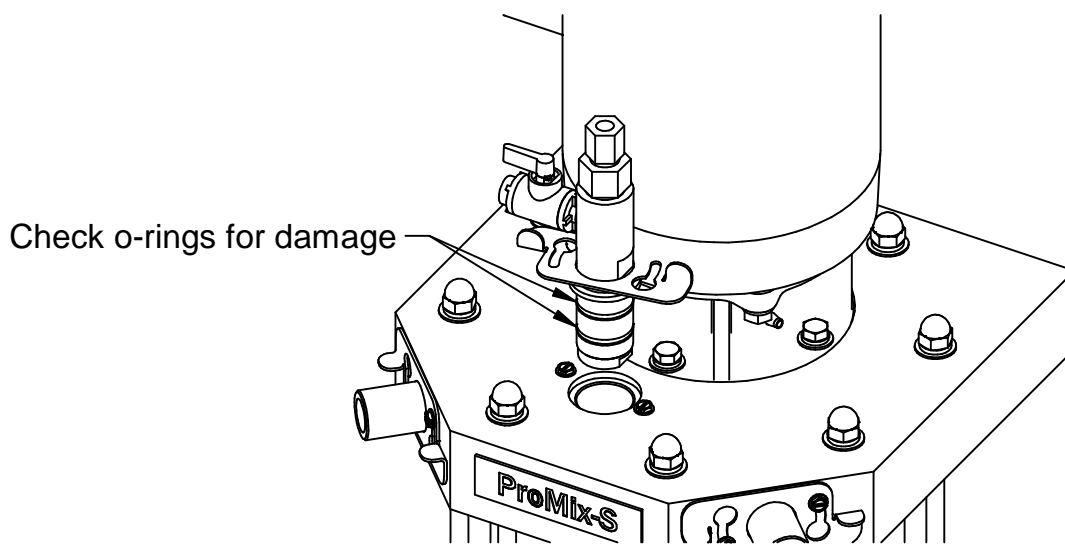


FIGURE 8

12. Align the injection valve retainer with the (2) hex head screws until the retainer can sit flush with the top plate. Then rotate the retainer clockwise until the retainer stops.

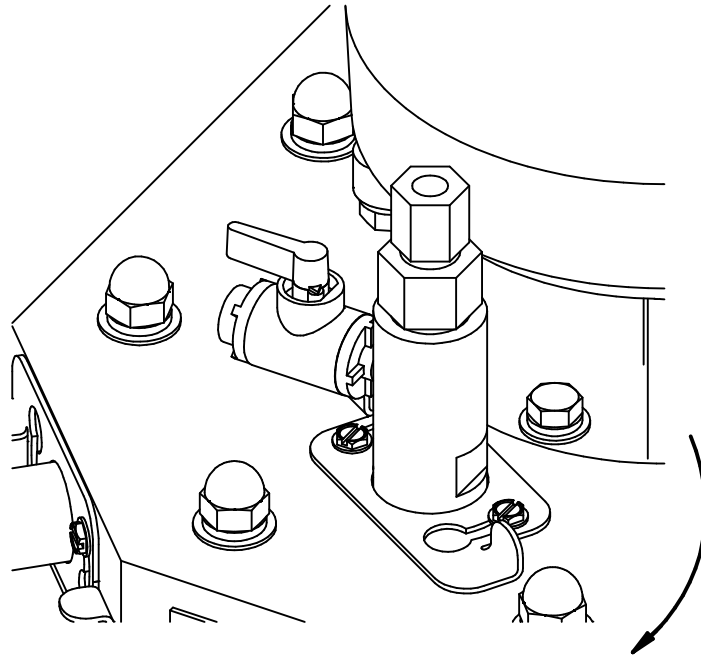


FIGURE 9

13. Tighten the (2) hex head screws until hand tight and the injection valve retainer can no longer move. Do not over tighten.

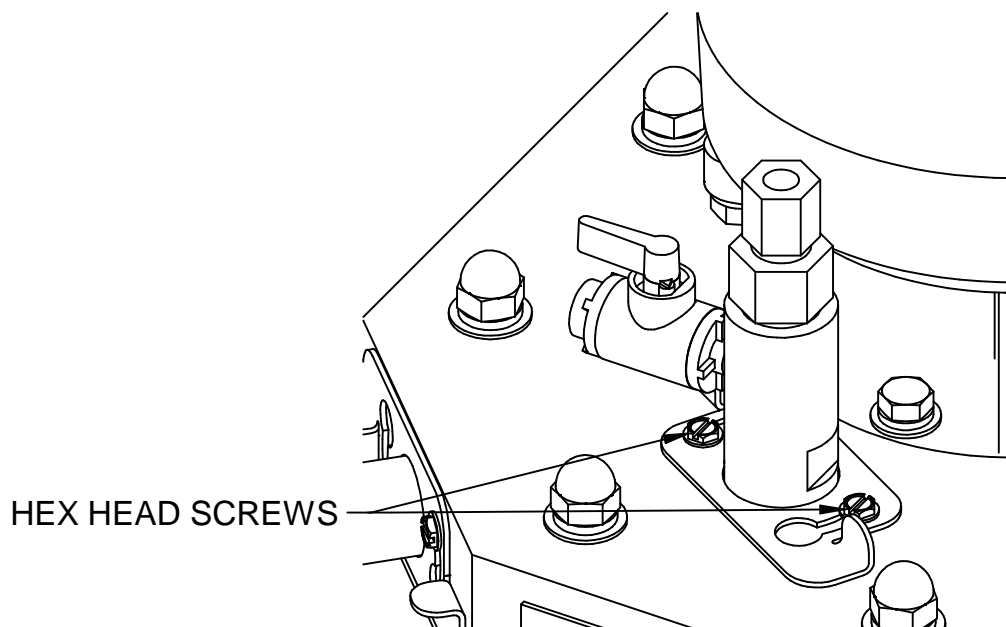


FIGURE 10

14a For the Promix C and S systems, reinstall the tubing into the Jaco fitting and tighten.

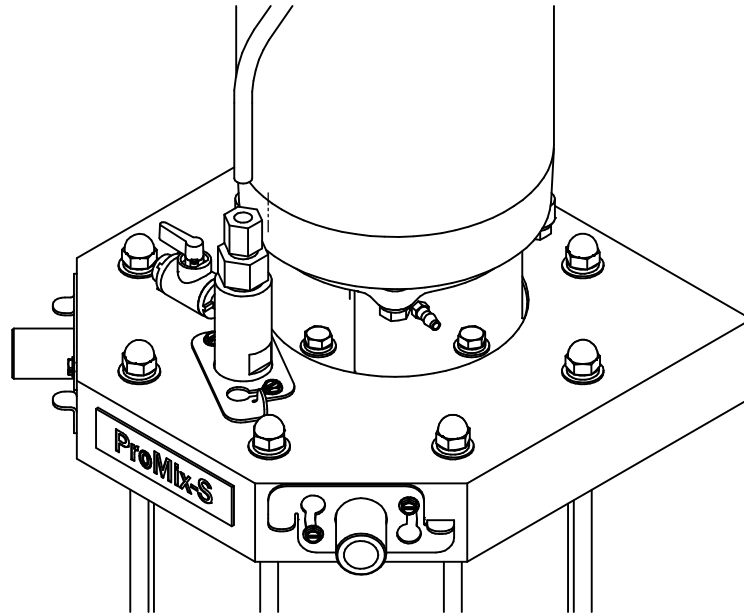


FIGURE 11a

14b. For the Promix M systems, reinstall the hose and tighten the hose clamp.

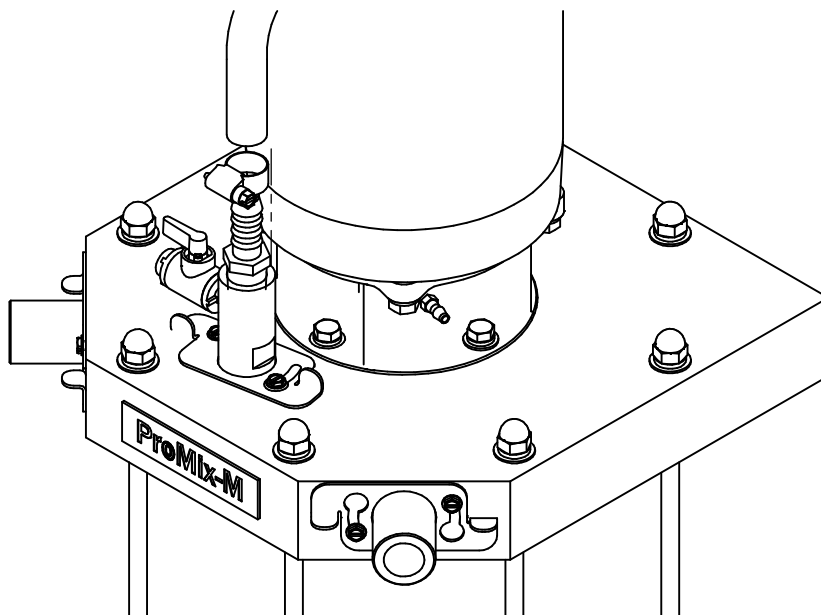


FIGURE 11b