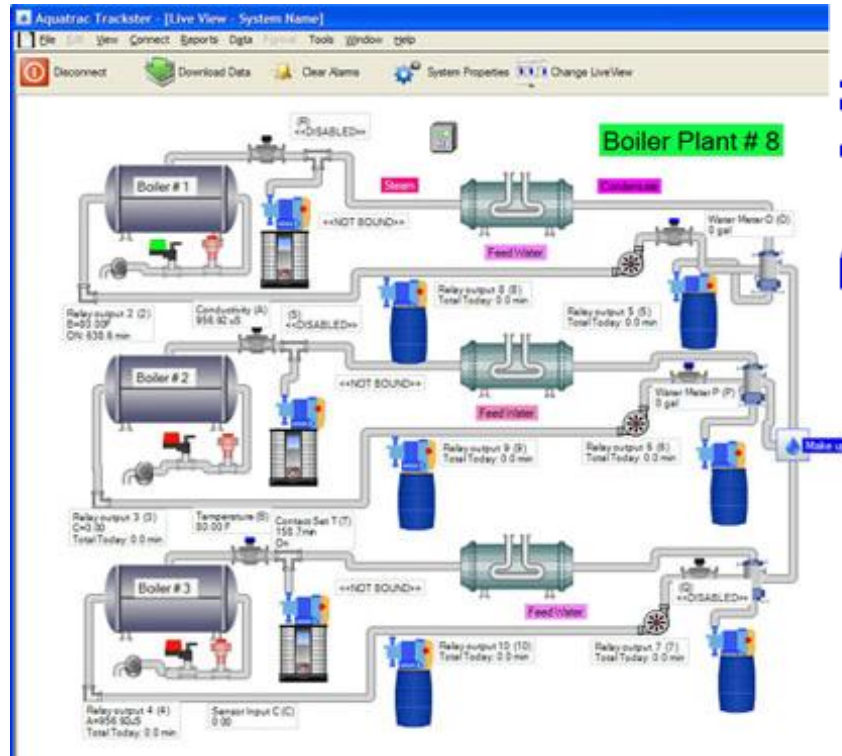


Trackster 3 Command and Control Software

Trackster 3 is the command and control software for MultiFlex Controllers for cooling towers and boilers. MultiFlex's may control multiple cooling towers or boilers or a mix of boilers, towers and closed loops. **Trackster** provides you with the tools to view and control the water treatment of both simple and complex installations in real time. Report generation, data import/export, manual data entry, alarm logging and controller networking tools fill up the **Trackster** toolbox.



Real Time Views of Your Cooling Towers and Boilers

Use the tower and boiler Views provided with Trackster or use the view editor to move the pipes, pumps, valves, towers, boilers... to look like your site or sites. Import your own images/photographs to make your own custom LiveViews. **Trackster** allows you to watch as pumps and valves turn from green to red, conductivity increases, pH drops, flow switches ON, corrosion rates trend, biocides pump, water meters make-up & blowdown valves flash, feedwater temps fall and sulfite feed ramps up: - It's all visual and all real time.

Site Structured Reporting

Controllers are organized by Site; where a Site may be a physical location or all controllers and manual entry logs associated with one customer. Reports may merge data from all controllers from any site.

Remote Connections

In addition to connecting to your controller locally, **Trackster 3.2** gives you the capability to connect to your controllers via modem and/or Ethernet. This means that you can be located anywhere in the world and still have total control of your cooling and/or boiling controls.

Complete Maintenance and Configuration Toolbox

Adjust setpoints, reset alarms, re-calibrate, switch inhibitor feed modes and biocide timing, span 4-20mA loops, monitor corrosion rates tank levels, tower and feedwater temperatures... Adjust water meters, set pager dial-out, switch pump control sensors.

Makeup Meter 0 (0)

General | Alarms | Calibrate | Diagnostic

Name: Makeup Meter 0 Resolution: 1

Units of Measure: Gal Log Period: 5 min

I/O Location: 0

Calculate Log Period...

OK Cancel Apply

AutoPoll Historical Data and Alarms

Trackster 3.2 supports two different types of AutoPolling - 1. AutoPoll Historical Data and 2. AutoPoll Alarms.

Trackster AutoPoll Manager

AutoPoll View

Start Stop Minimize Open Trackster Hide Trackster

Queue	Results	Alarms	Schedules
System	Controller	Due in	Schedule Type
Samples	Office MF 106	Executing	Daily Data
Samples	Pittsburgh MF1	2 hours overdue	Daily Data

Download I/O Data

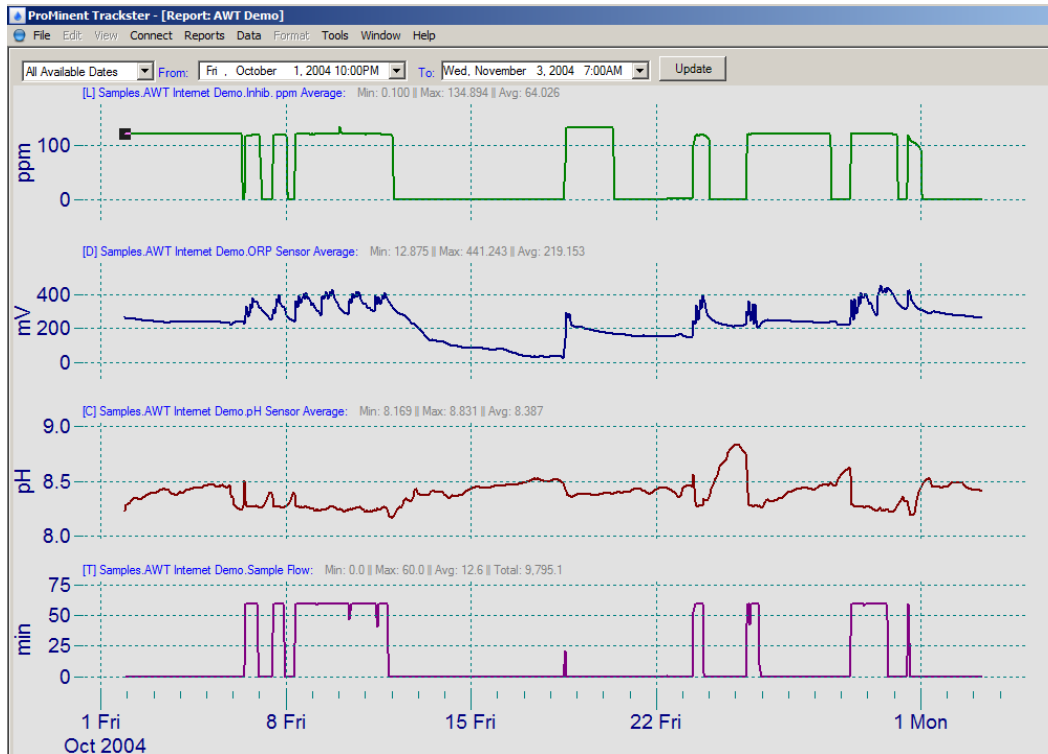
Importing data into database...

AutoPoll Historical Data – Automatically download historical data from controller's and optionally, email out the historical data to one or more Email recipients.

AutoPoll Alarms - Trackster will check for new alarms on your controller's. If one or more alarms are found, Trackster will email the information to one or more Email and/or Cell Phone recipients. Being notified via your cell phone can have you aware of any and all alarms from all of your controller's up to the minute!

Powerful Reporting Tools

Combine multiple controllers and formula's into one report. View sensor data with respect to control setpoints and/or alarms. Share your reports via Email.



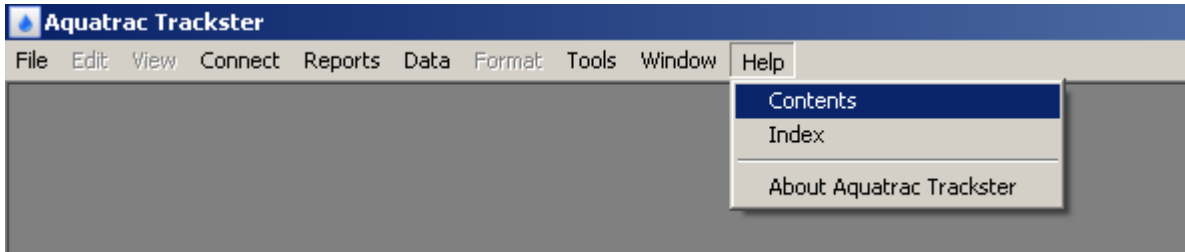
Export and Import Tools

Export Trackster reports and raw data directly to Excel and other formats.

	A	B	C	D	E	F	G	H	I	J	K	L	M	N	O
2	Aquatrac	M7775-1115	System Name	2006-10-19 11:46:07	A	Conductivity	uS	100000	0	1020					
3	Aquatrac	M7775-1115	System Name	2006-10-19 11:46:07	B	Temperature	F	100000	0	1020					
4	Aquatrac	M7775-1115	System Name	2006-10-19 11:46:07	E	pH Sensor	pH	100000	0	1020					
5	Aquatrac	M7775-1115	System Name	2006-10-19 11:46:07	F	ORP Sensor	mV	100000	0	1020					
6	Aquatrac	M7775-1115	System Name	2006-10-19 11:46:07	G	4-20mA Input	---	100000	0	3600					
7	Aquatrac	M7775-1115	System Name	2006-10-19 11:46:07	H	4-20mA Input	---	100000	0	3600					
8	Aquatrac	M7775-1115	System Name	2006-10-19 11:46:07	I	Condensate Cond	uS	100000	0	3600					
9	Aquatrac	M7775-1115	System Name	2006-10-19 11:46:07	J	Boiler Conductivity	uS	100000	0	3600					
10	Aquatrac	M7775-1115	System Name	2006-10-19 11:46:07	K	Boiler Conductivity	uS	100000	0	3600					
11	Aquatrac	M7775-1115	System Name	2006-10-19 11:46:07	L	Condensate Cond	uS	100000	0	3600					
12	Aquatrac	M7775-1115	System Name	2006-10-19 11:46:07	O	Water Meter O	gal	250000	100	3600	2006-10-19 11:46:07	0			
13	Aquatrac	M7775-1115	System Name	2006-10-19 11:46:07	P	Water Meter P	gal	250000	100	3600	2006-10-19 11:46:07	0			
14	Aquatrac	M7775-1115	System Name	2006-10-19 11:46:07	T	Contact Set T	min	90000	90000	3600					
15	Aquatrac	M7775-1115	System Name	2006-10-19 11:46:07	U	Cond Control	uS			3600			A	1000	800
16	Aquatrac	M7775-1115	System Name	2006-10-19 11:46:07	V	Temp Control	F			3600			B	90	70
17	Aquatrac	M7775-1115	System Name	2006-10-19 11:46:07	W	pH Control	pH			3600			E	7.9	6.8
18	Aquatrac	M7775-1115	System Name	2006-10-19 11:46:07	X	ORP Control	mV			3600			F	56.7999999	54.7
19	Aquatrac	M7775-1115	System Name	2006-10-19 11:46:07	Y	4-20 Control	---			3600			G	203.900000	201.099999
20	Aquatrac	M7775-1115	System Name	2006-10-19 11:46:07	Z	Cond 2 Control	uS			3600			A	966	966.100000
21	Aquatrac	M7775-1115	System Name	2006-10-19 11:46:07	AA	BI Cond Control	uS			3600			J	937.200001	836.100000
22	Aquatrac	M7775-1115	System Name	2006-10-19 11:46:07	AB	BQ Cond Control	uS			3600			K	229.099999	227.900000
23	Aquatrac	M7775-1115	System Name	2006-10-19 11:46:07	AC	Condnt Cond	gal			3600			O	777	666
24	Aquatrac	M7775-1115	System Name	2006-10-19 11:46:07	AD	pH 2 Control	pH			3600			E	7.5	6.5

HELP

A wealth of information is available in the Trackster Help directory. Select 'Help' and 'Contents' to see the list of topics.



Press the (+) signs to open subdirectories. Read the files or watch the videos.

