

ProMix-L™

Designed for Maximum Polymer Activation and Performance!



Example of ProMix-L

The **ProMinent® ProMix-L™** is a complete pre-engineered polymer mixing system with intuitive controls. Designed as an in-line or makedown unit, the ProMix-L™ is engineered to meet liquid polymer applications utilizing gear or progressing cavity pump technologies. The unique mixing regime delivers a highly activated polymer solution to every application with optimum performance.

Features & Benefits

- LCD display with touchpad control
- Primary & secondary flow display
- Local or remote operation
- 4-20mA input to pace pump
- Remote start/stop
- General alarm contacts
- System browser view
- Maintains desired concentration based on primary and secondary dilution water flow
- Ethernet communications and datalogging
- System senses loss of water flow and neat polymer flow
- Precise activated polymer solution delivery
- System alarm and running lights

- True multi-zone mixing chamber that delivers a tapered energy profile for proper polymer activation
- Unique injection check valve with easy access for cleaning
- Gear and progressing cavity pump options
- Open design for easy maintenance

Applications

- Emulsion, dispersion or Mannich polymer activation
- Coagulant or solution polymer feed
- Water and wastewater treatment
- Clarification
- Sludge thickening
- Sludge dewatering
- Custom designs to meet any polymer feed application

Specifications

- Water Inlet 3" FNPT
- Polymer Inlet 2" FNPT for gear pump
- 1" FNPT for pc pump
- Solution Outlet 3" FNPT
- Max. Chamber Pressure 100 PSIG
- Max. Operating Pressure 100 PSIG
- Power Supply 460 VAC, 3 Phase, 60Hz
- Current Load 20 Amp for (PB) models
- Drain Connection 1/2" FNPT

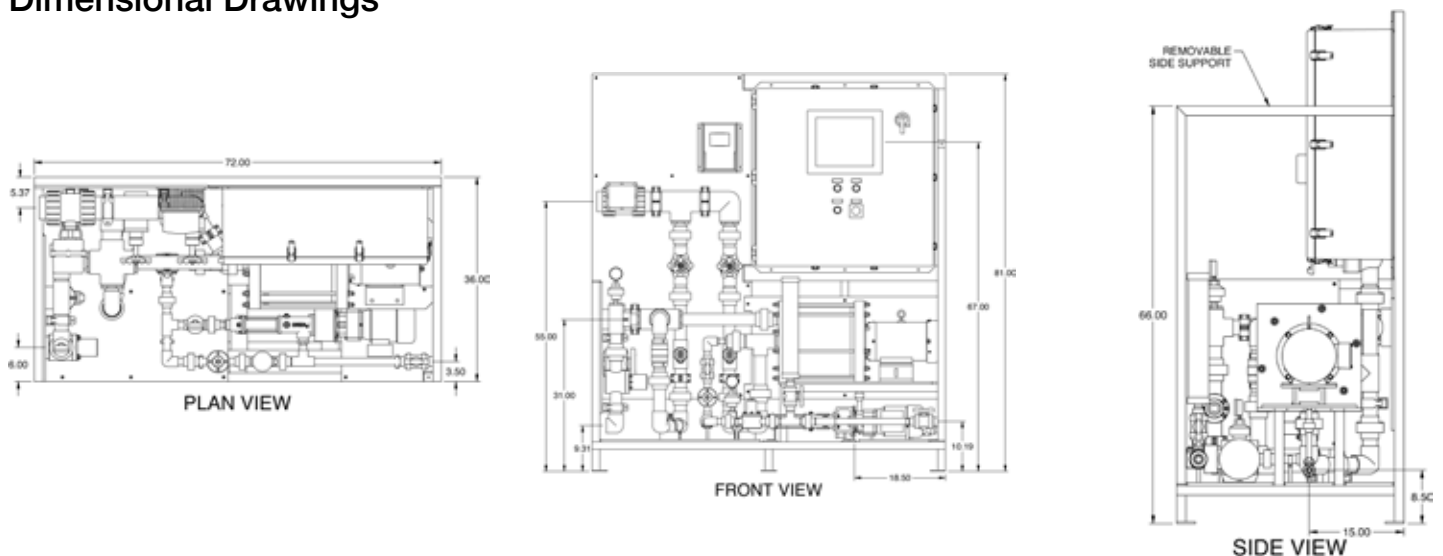
Capacity Data

ProMix™-L			
Model Number	Primary Dilution gph	Secondary Dilution gph	Polymer Pump gph
M_0-3000x2-15GB*	3000	3000	150
M_0-3000x2-300GB	3000	3000	300
M_0-3000x2-15PB*	3000	3000	15
M_0-3000x2-30PB	3000	3000	30
M_0-6000x2-300GB	6000	6000	300
M_0-6000x2-30PB	6000	6000	30
M_0-6000x2-60PB	6000	6000	60

*GB = Gear Pump

*PB = Progressive Cavity Pump

Dimensional Drawings



ProMinent Fluid Controls, Inc.
 136 Industry Drive • Pittsburgh, PA 15275 USA
 (412) 787-2484 • Fax: (412) 787-0704
 email: sales-US@prominent.com www.prominent.us

© 2017 ProMinent Fluid Controls, Inc.
 All Rights Reserved.

PN: 7750266
 ProMix_L.indd rev5 09/01/2017