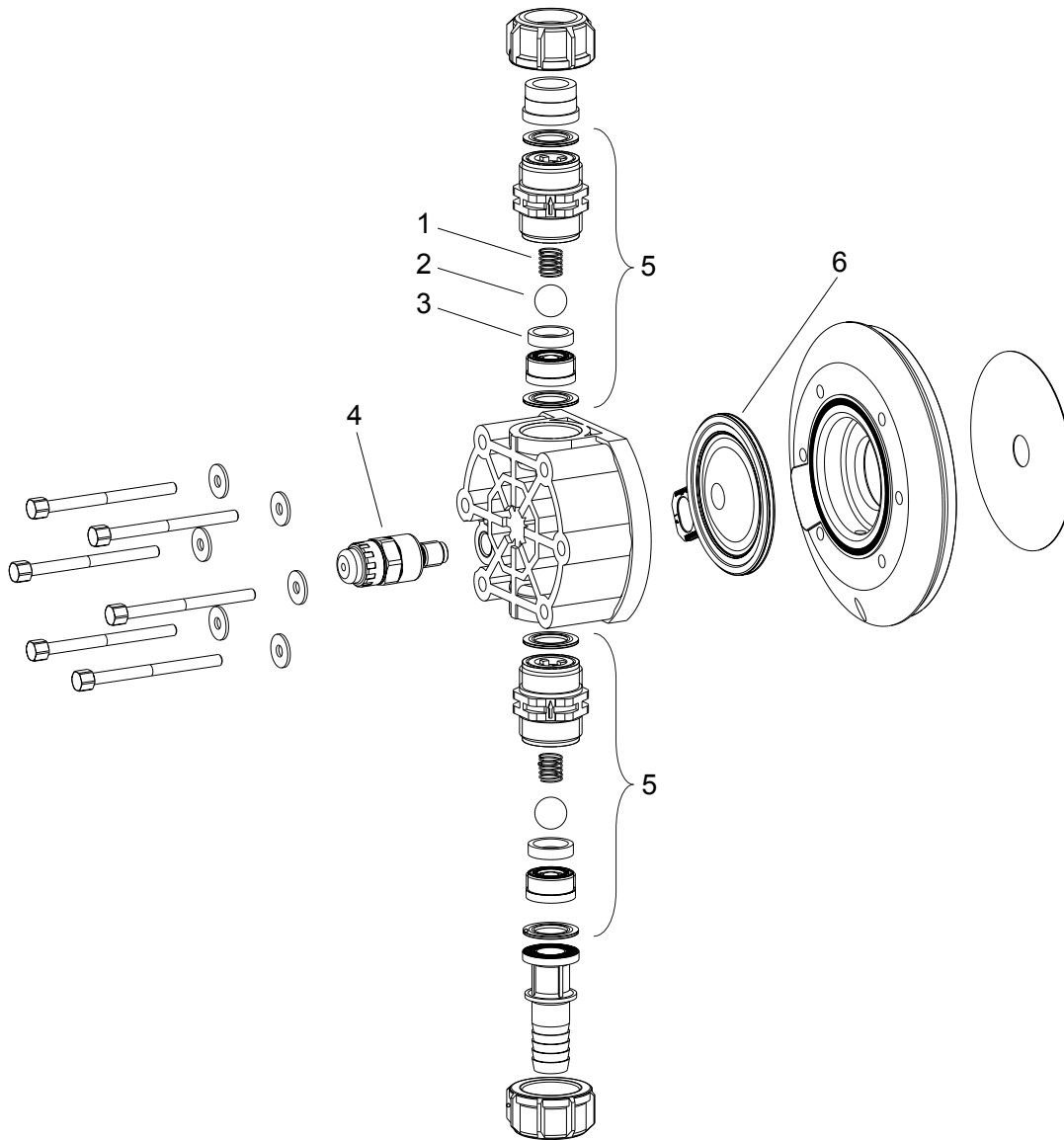


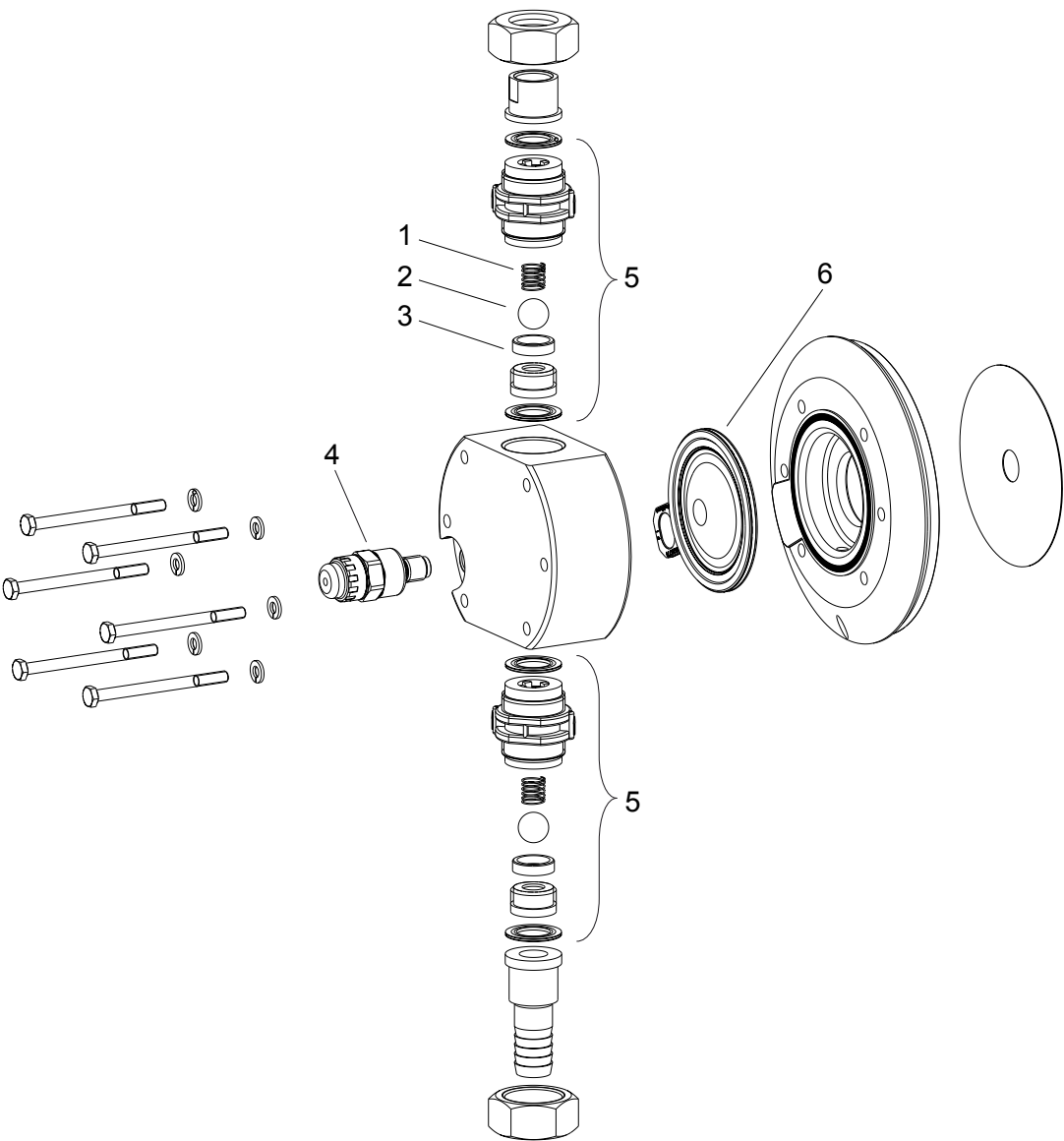
Item.	Description	Type 12035, 12017, 10050	Type 07065, 10044, 10022
1	Spring	**	**
2	Ball	*	*
3	Ball seat	*	*
4	Diaphragm rupture sensor, visual	1033323	1033323
5	Valve	1002267*	1002267*
6	Multi-layer diaphragm	1030114*	1030115*

* The items listed are included in the spare parts kit. ** Special accessories (not included in the spare parts kit). Technical changes reserved.



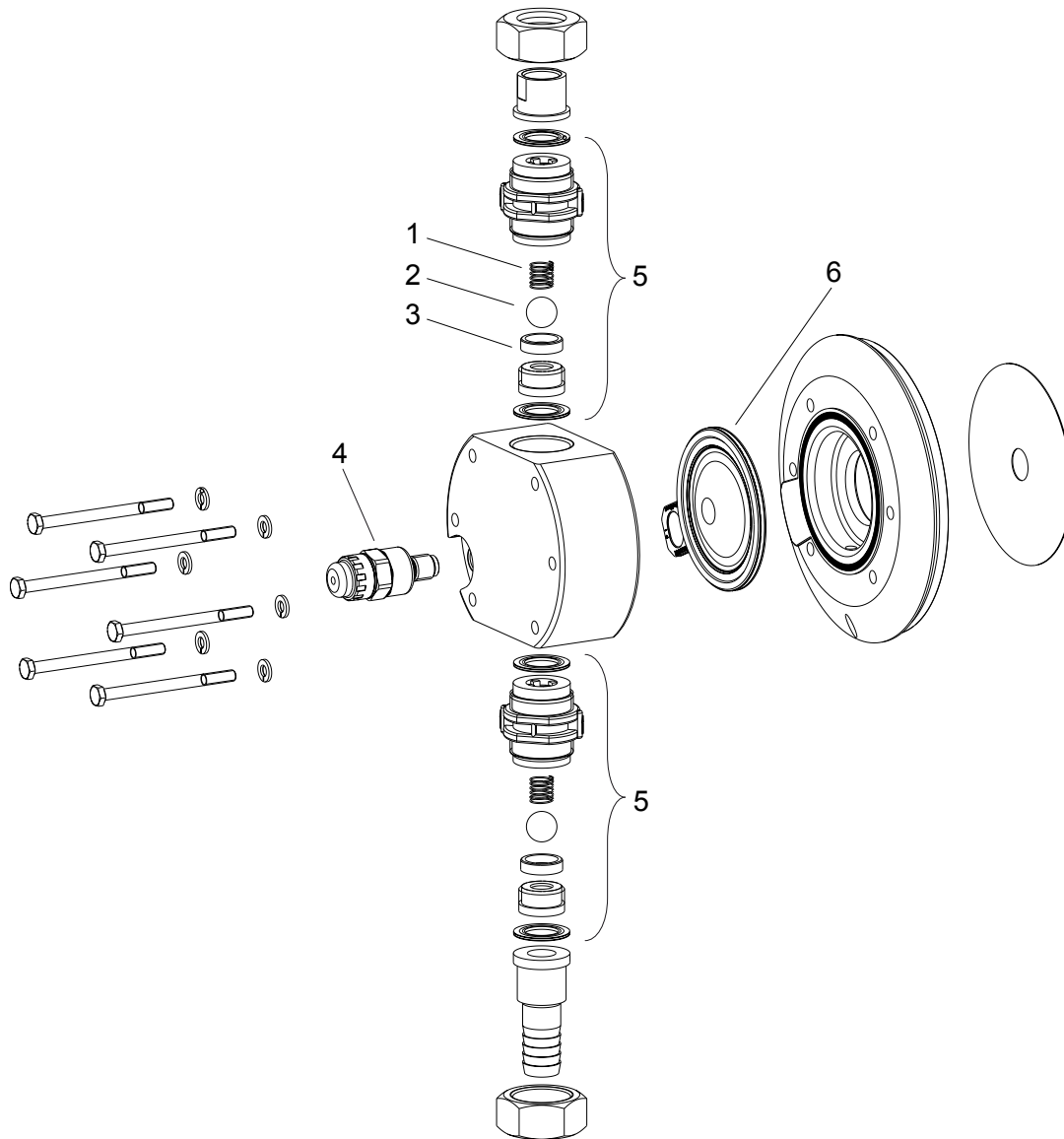
Item.	Description	Type 04084, 04120, 07042
1	Spring	**
2	Ball	*
3	Ball seat	*
4	Diaphragm rupture sensor, visual	1033323
5	Valve	792517*
6	Multi-layer diaphragm	1035828*

* The items listed are included in the spare parts kit. ** Special accessories (not included in the spare parts kit). Technical changes reserved.



Item.	Description	Type 12035, 12017, 10050	Type 07065, 10044, 10022
1	Spring	**	**
2	Ball	*	*
3	Ball seat	*	*
4	Diaphragm rupture sensor, visual	1033323	1033323
5	Valve	809459	809459
6	Multi-layer diaphragm	1030114*	1030115*

* The items listed are included in the spare parts kit. ** Special accessories (not included in the spare parts kit). Technical changes reserved.



Item.	Description	Type 04084, 04120, 07042
1	Spring	**
2	Ball	*
3	Ball seat	*
4	Diaphragm rupture sensor, visual	1033323
5	Valve	809404
6	Multi-layer diaphragm	1035828*

* The items listed are included in the spare parts kit. ** Special accessories (not included in the spare parts kit). Technical changes reserved.

Sigma/ 1 Diaphragm Metering Pumps

Spare parts

The replacement part kit in general includes the wear parts of the delivery units.

Scope of delivery for material PVT

1 x metering diaphragm, 1 x suction valve compl., 1 x pressure valve compl., 2 x valve balls

1 x elastomer seal kit (EPDM, FPM-B)

2 x ball seat bushing, 2 x ball washer, 4 x formed composite seal

Scope of delivery for material SST

1 x metering diaphragm, 2 x valve balls

2 x seal kit compl. (packing rings, ball seat washers)

4 x formed composite seals

Spare parts kits Sigma/ 1 for versions with multilayer safety diaphragm

(for Identcode: Type 12017, 12035, 10050)

Delivery unit	Materials in contact with medium	Order no.	
FM 50 - DN 10	PVT	1035964	
FM 50 - DN 10	SST	1035966	
FM 50 - DN 10	SST (with 2 valve assemblies)	1035965	

(for Identcode: Type 10022, 10044, 07065)

Delivery unit	Materials in contact with medium	Order no.	
FM 65 - DN 10	PVT	1035967	
FM 65 - DN 10	SST	1035969	
FM 65 - DN 10	SST (with 2 valve assemblies)	1035968	

(for Identcode: Type 07042, 04084, 04120)

Delivery unit	Materials in contact with medium	Order no.	
FM 120 - DN 15	PVT	1035961	
FM 120 - DN 15	SST	1035963	
FM 120 - DN 15	SST (with 2 valve assemblies)	1035962	

Spare parts kits Sigma/ 1 for version with old standard/ double diaphragm

(for Identcode: Type 12017, 12035, 10050)

Sigma/ 1 Diaphragm Metering Pumps

Delivery unit	Materials in contact with medium	Order no.	
FM 50 - DN 10	PVT	1010541	
FM 50 - DN 10	SST	1010554	
FM 50 - DN 10	SST (with 2 valve assemblies)	1010555	

(for Identcode: Type 10022, 10044, 07065)

Delivery unit	Materials in contact with medium	Order no.	
FM 65 - DN 10	PVT	1010542	
FM 65 - DN 10	SST	1010556	
FM 65 - DN 10	SST (with 2 valve assemblies)	1010557	

(for Identcode: Type 07042, 04084, 04120)

Delivery unit	Materials in contact with medium	Order no.	
FM 120 - DN 15	PVT	1010543	
FM 120 - DN 15	SST	1010558	
FM 120 - DN 15	SST (with 2 valve assemblies)	1010559	

Multilayer safety diaphragm (standard)

	Order no.	
FM 50 (type 12017; 12035; 10050)	1030114	
FM 65 (type 10022; 10044; 07065)	1030115	
FM 120 (type 07042; 04084; 04120)	1035828	

Metering diaphragm (old version)

	Order no.	
Sigma/ 1 FM 50 (12017; 12035; 10050)	1010279	
Sigma/ 1 FM 65 (10022; 10044; 07065)	1010282	
Sigma/ 1 FM 120 (07042; 04084; 04120)	1010285	

Spare parts kit for integrated overflow valve

consisting of two Hast. C compression springs and four FPM-A and EPDM O-rings each

	For material	Seals	Order no.	
--	--------------	-------	-----------	--

Sigma/ 1 Diaphragm Metering Pumps

ETS overflow valve 4 bar	PVT/SST	FPM-A / EPDM	1031199	
ETS overflow valve 7 bar	PVT/SST	FPM-A / EPDM	1031200	
ETS overflow valve 10 bar	PVT/SST	FPM-A / EPDM	1031201	
ETS overflow valve 12 bar	PVT/SST	FPM-A / EPDM	1031202	