

ProMix™-S Polymer Blending System

New ProMinent Polymer Design!

The **ProMinent ProMix™** is a pre-engineered polymer mixing system made for the water and wastewater markets. Designed as an in-line unit, the **ProMix™** can be customized to meet most liquid polymer applications utilizing tubing pump technologies. The unique mixing chamber allows for complete makedown of the neat or diluted polymer to guarantee a problem-free injection.

Features and benefits

- Open design for easy maintenance
- True multi-zone mixing regime for proper polymer activation
- Unique injection check valve with easy access for cleaning
- Adjustable auto flush settings
- System protection against loss of water flow
- Precise activated polymer solution delivery
- LCD display with touchpad control
- 4-20mA input to pace pump
- Remote start/stop
- General alarm contacts



Applications

- Emulsion or Dispersion polymer activation
- Coagulant or Solution polymer feed
- Water and Wastewater treatment
- Clarification
- Sludge Dewatering

Specifications

- Water Inlet: 3/4" FNPT
- Polymer Inlet: 1/2" FNPT
- Product Outlet: 3/4" FNPT
- Max. Chamber Pressure: 150 PSIG
- Max. Operating Pressure: 100 PSIG
- Power Supply: 120 VAC, 1 Phase, 60Hz
- Current Load: 15 Amp
- Drain Connection: 1/4"

ProMinent®

Visit our XTRANET <www.prominentxtranet.com> to:

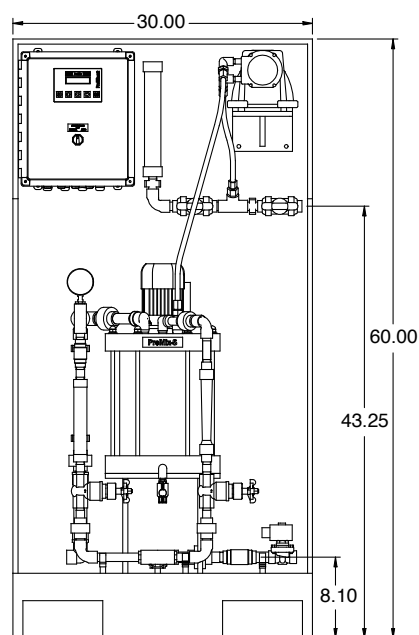
- sign up for our electronic newsletter
- download literature and manuals
- validate your product warranty

ProMix™-S Polymer Blending System

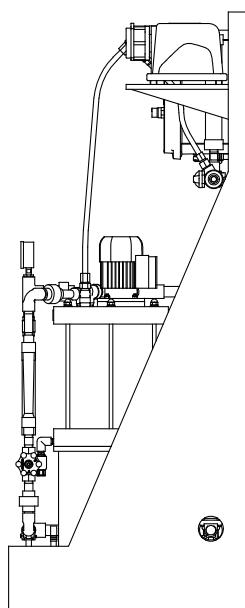
Capacity data

ProMix™-S Series P/N	Model Number	Primary Dilution gph	Primary Rotameter (gpm)	Secondary Dilution gph	Secondary Rotameter (gpm)	Peristaltic Pump gph	Max Pump Pressure psi
7746602	60-0.21TA	60	1	-	-	0.21	100 psi
7746603	60x2-0.71TA	60	1	60	1	0.71	100 psi
7746604	180x2-0.71TA	180	3	120	2	0.71	100psi
7746605	180x2-1.67TA	180	3	120	2	1.67	100psi
7746606	300x2-2.50TA	300	5	300	5	2.50	25 psi
7746607	300x2-3.54TA	300	5	300	5	3.54	25 psi

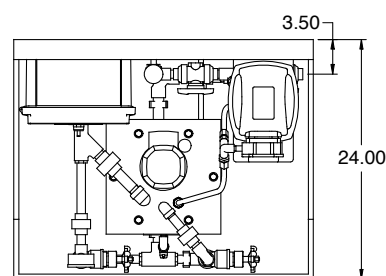
Dimensional Drawings



FRONT VIEW



SIDE VIEW



PLAN VIEW

ProMinent®

ProMinent Fluid Controls, Inc. (US)

136 Industry Drive
Pittsburgh, PA 15275-1014
Tel: (412) 787-2484
Fax: (412) 787-0704
eMail: sales@prominent.us
www.prominent.us

ProMinent Fluid Controls Ltd. (Canada)

490 Southgate Drive
Guelph, ON N1G 4P5
Tel: 1-888-709-9933 | (519) 836-5692
Fax: (519) 836-5226
eMail: sales@prominent.ca
www.prominent.ca