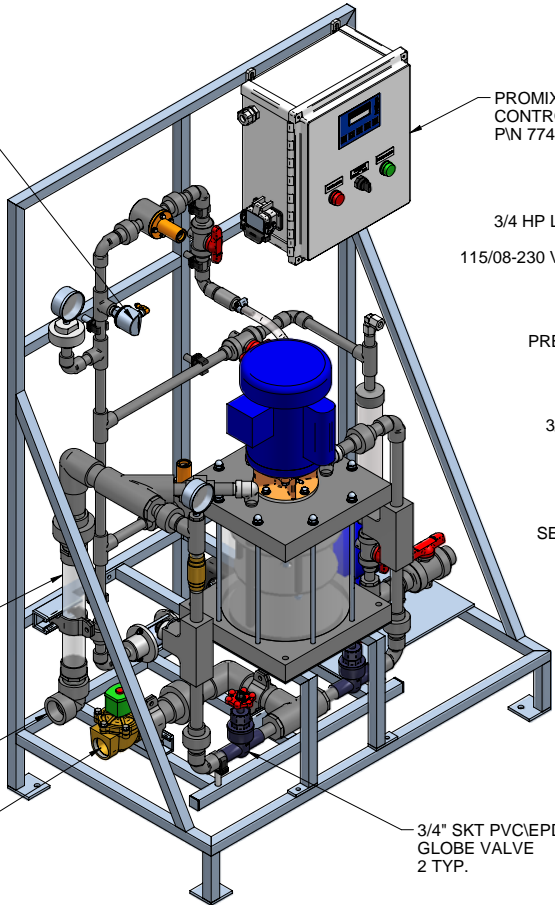


PLAN VIEW

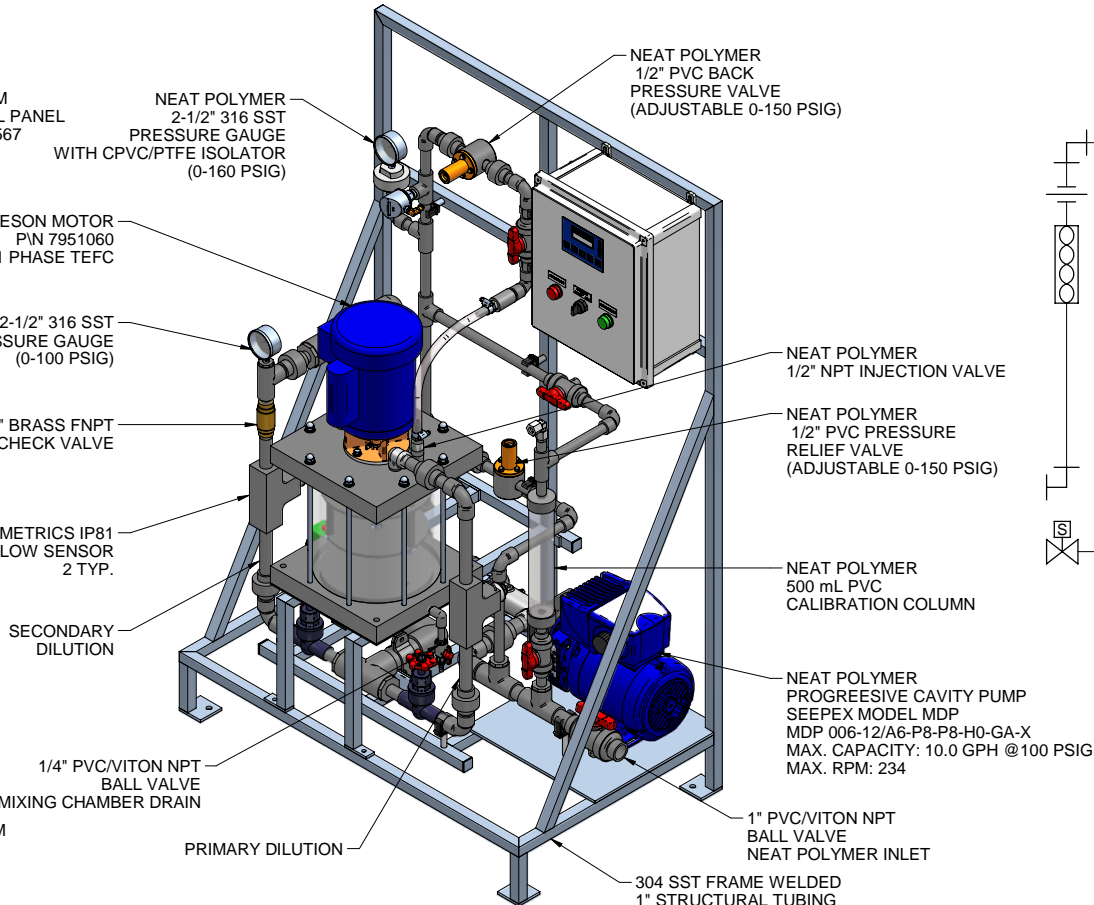
1-1/2" CLEAR PVC  
STATIC MIXER  
POLYMER SOLUTION  
INSPECTION WINDOW

1-1/2" PVC NPT  
ELBOW  
POLYMER OUTLET

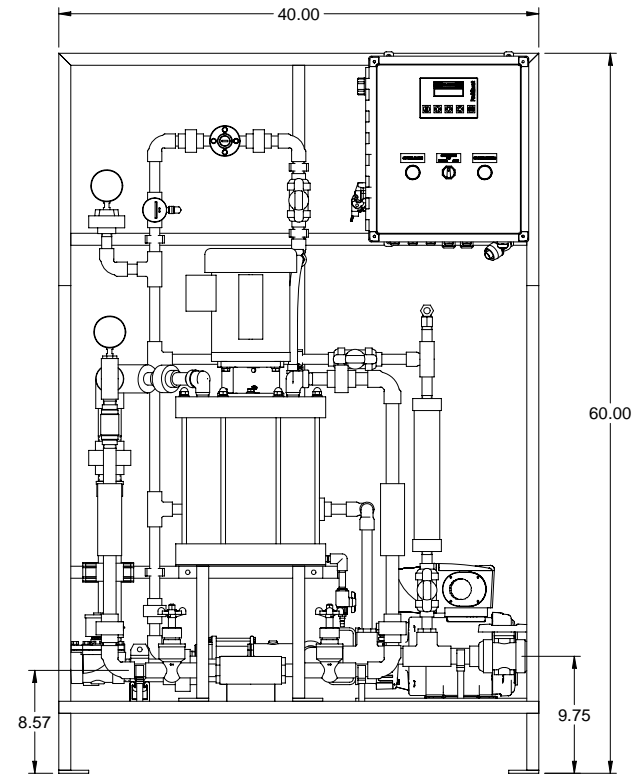
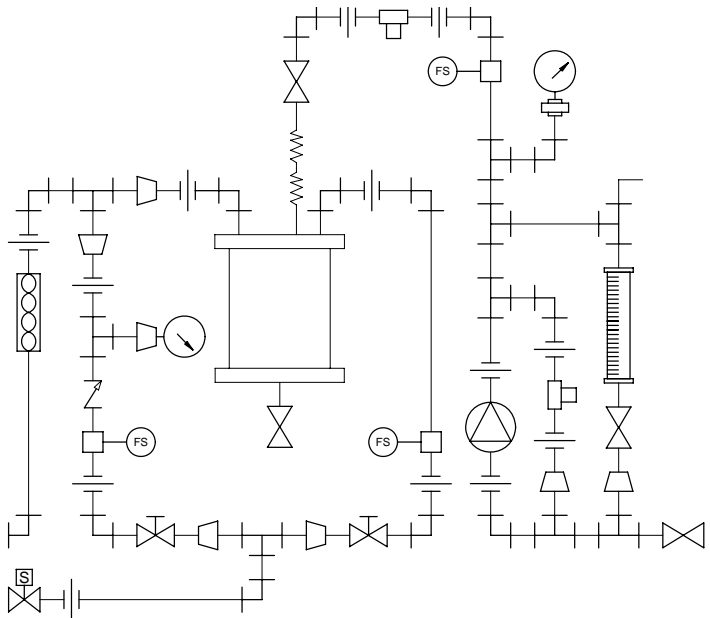
1-1/2" BRASS NPT  
120V NORMALLY CLOSED  
SOLENOID VALVE  
WATER INLET



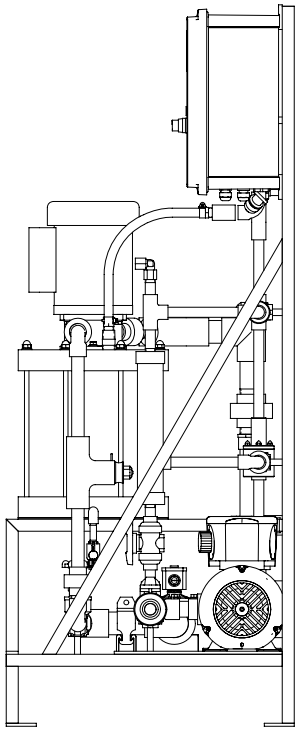
LEFT ISOMETRIC VIEW



RIGHT ISOMETRIC VIEW




FRONT VIEW



SIDE VIEW

- NOTES:
- ALL PIPING AND FITTINGS SHALL BE 1/2", 3/4", 1" AND 1-1/2" SCH. 80 PVC SOCKET WELD WITH VITON SEALS AS REQUIRED BY COMPONENTS.
  - EMULSION POLYMER BLENDING SYSTEM WITH THREE ZONE PVC MIXING CHAMBER.
  - REQUIRED INCOMING POWER:  
  
120VAC, 60HZ, 1 PHASE, 20 AMP CURRENT RATING AT 120 VAC
  - ALL DIMENSIONS ARE IN INCHES AND ARE SHOWN FOR REFERENCE ONLY.

MAXIMUM TESTING PRESSURE =	150 PSI
MAXIMUM OPERATING PRESSURE =	100 PSI
CHEMICAL SERVICE =	POLYMER

A	03/30/10	REVISED CONTROLPANEL P\N		GJS	
0	03/04/10	FIRST ISSUE		GJS	
REV	DATE	DESCRIPTION		BY	APPD/REVD
REVISIONS					
CUSTOMER <b>PROMINENT FLUID CONTROLS INC.</b> <b>(PROMIX M SYSTEM)</b>					
JOB No		7746548		PURCHASE ORDER No <b>N/A</b>	
TITLE <b>PROMIX M_0-1500X2-10.0PB SYSTEM SKID</b> <b>GENERAL ARRANGEMENT</b>					
THIS DRAWING IS THE PROPERTY OF PROMINENT FLUID CONTROLS INC. AND SHALL NOT BE COPIED OR TRANSFERRED WITHOUT THE WRITTEN CONSENT OF PROMINENT FLUID CONTROLS INC.					
ENGINEERS SEAL		<div><div></div><div><div><b>ProMinent®</b></div><div>THE PROMINENT GROUP OF COMPANIES</div></div></div>			
		PITTSBURGH, PA USA		WWW.PROMINENT.US	
		PROMINENT FLUID CONTROLS LTD. 490 SOUTHGATE DRIVE. GUELPH, ONTARIO, CANADA N1H 6J3 TEL. 519 836 5692 FAX. 519 836 5226		PROMINENT FLUID CONTROLS INC. RIDC PARK WEST 136 INDUSTRY DRIVE, PITTSBURGH P.A., USA. 15275 TEL. 412 787 2484 FAX. 412 787 0704	
		DESIGNED <b>GJS</b>		APPROVED	
		DRAWN <b>GJS</b>		SCALE <b>N.T.S.</b>	
		CHECKED <b>JMS</b>		DATE <b>03/04/10</b>	
DWG No				REV	PAGE
<b>7746548-200</b>				<b>A</b>	<b>1/1</b>