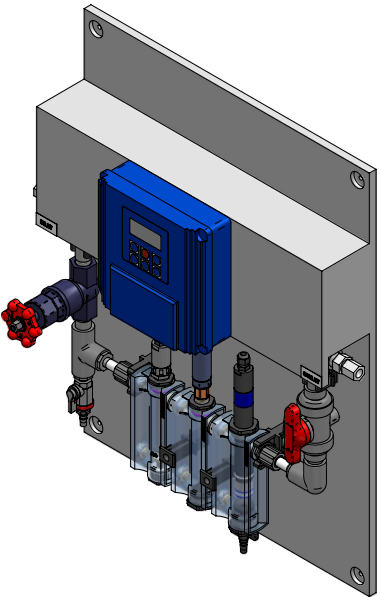
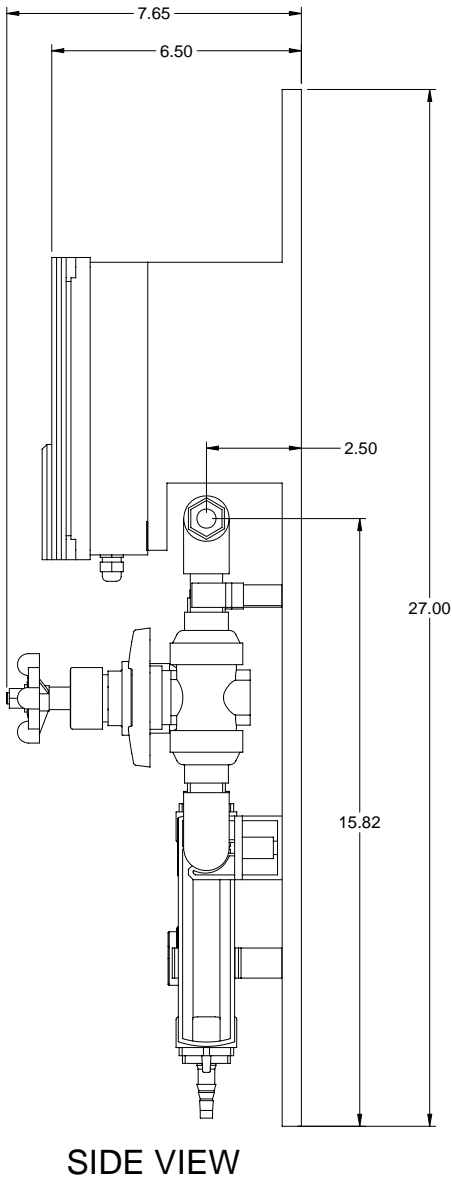
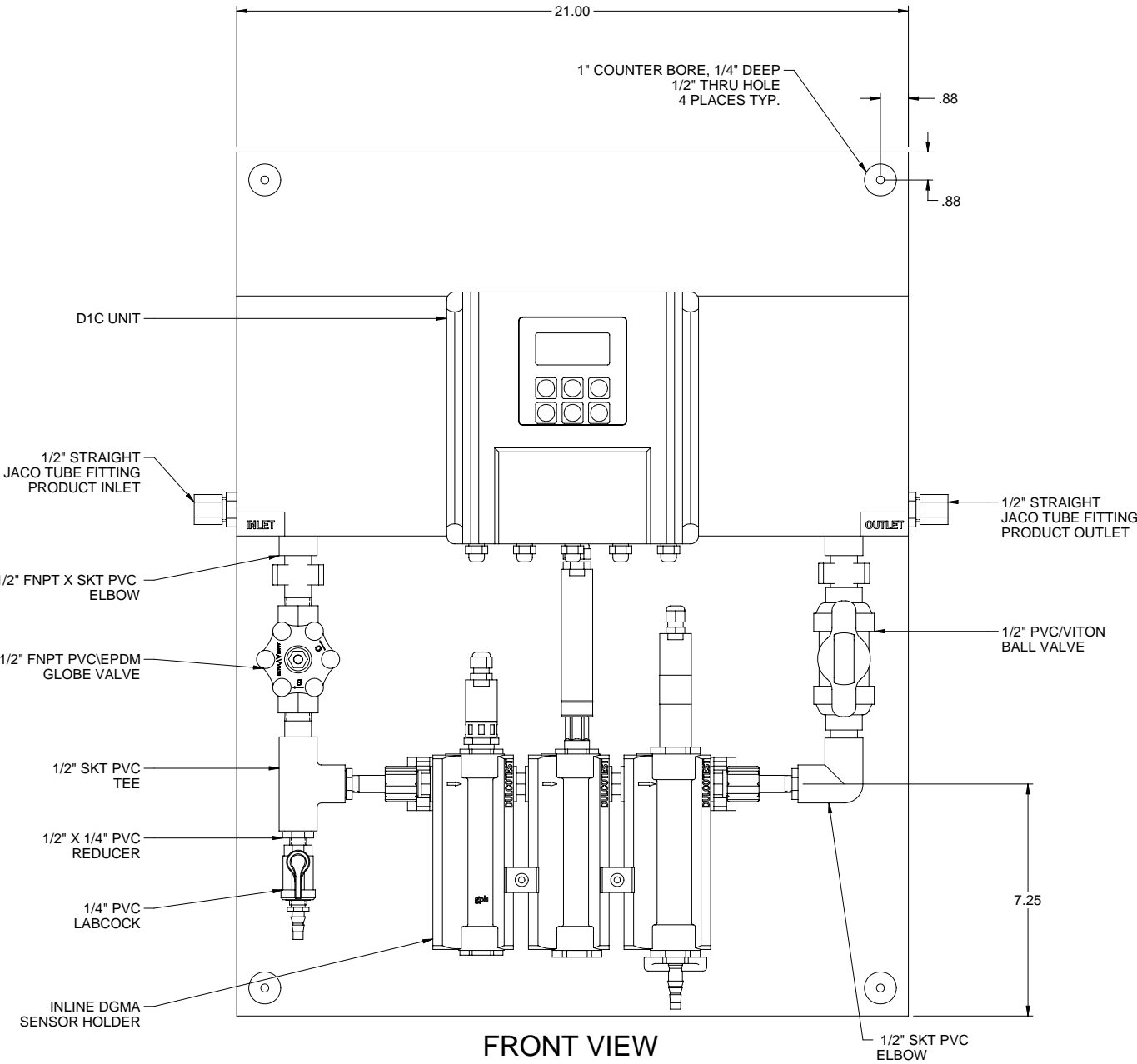


- NOTES:
1. ALL PIPING AND FITTINGS SHALL BE 1/2" SCH. 80 PVC SOCKET WELD WITH VITON SEALS UNLESS OTHERWISE REQUIRED BY COMPONENTS.
  2. 1/2" P.E. TUBING PROVIDED LOOSE.
  3. D1C ORDERED SEPERATELY.
  4. OPTIONAL POWER CORD AVAILABLE.
  5. ALL DIMENSIONS ARE IN INCHES AND ARE SHOWN FOR REFERENCE ONLY.



ISOMETRIC VIEW

D	11/02/09	UP-DATED PER PARTS LIBRARY	ALS		
C	06/02/04	ADDED GLOBE VALVE, CONVERTED TO SE	GJS		
REV	DATE	DESCRIPTION	BY	APPD	REVD
REVISIONS					
CUSTOMER <b>PROMINENT FLUID CONTROLS, INC.</b>					
JOB No		7740724	PURCHASE ORDER No		
TITLE PCM PANEL NON-ENCLOSED ASSEMBLY DRAWING					
THIS DRAWING IS THE PROPERTY OF PROMINENT FLUID CONTROLS INC. AND SHALL NOT BE COPIED OR TRANSFERRED WITHOUT THE WRITTEN CONSENT OF PROMINENT FLUID CONTROLS INC.					
ENGINEERS SEAL		<div><div><div>ptc</div><div>ProMinent</div></div><div><div>ProMinent<sup>®</sup></div><div>THE PROMINENT GROUP OF COMPANIES</div></div></div>			
		PITTSBURGH, PA USA		WWW.PROMINENT.US	
		PROMINENT FLUID CONTROLS LTD. 490 SOUTHGATE DRIVE. GUELPH, ONTARIO, CANADA N1H 6J3 TEL. 519 836 5692      FAX. 519 836 5226		PROMINENT FLUID CONTROLS INC. RIDC PARK WEST 136 INDUSTRY DRIVE, PITTSBURGH P.A., USA. 15275 TEL. 412 787 2484      FAX. 412 787 0704	
		DESIGNED DTH		APPROVED	
		DRAWN DTH		SCALE N.T.S.	
		CHECKED DH		DATE 09/21/99	
DWG No			REV	PAGE	
7740724-601			D	1/1	