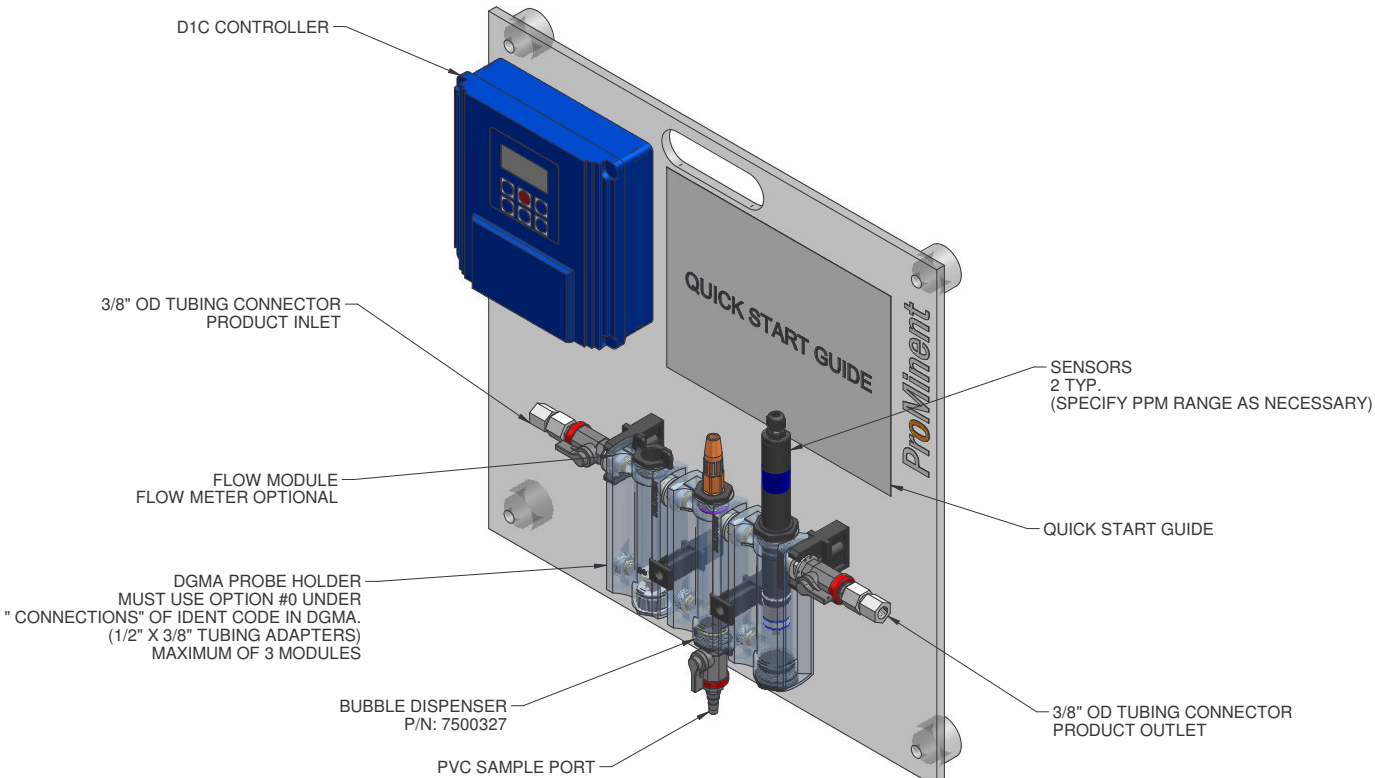
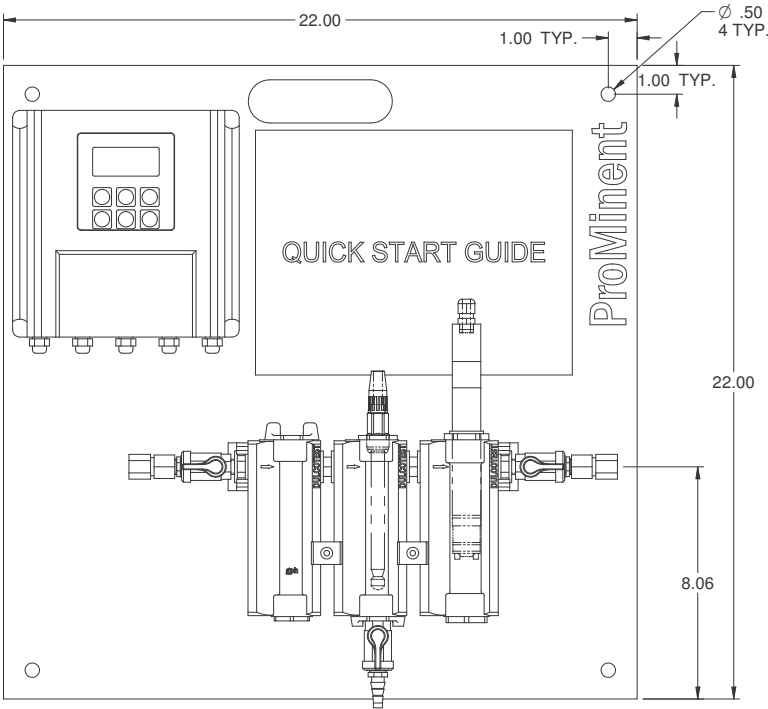


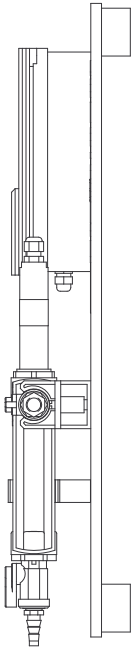
PLAN VIEW



ISOMETRIC VIEW




FRONT VIEW



SIDE VIEW

- NOTES:
- ALL PIPING AND FITTINGS SHALL BE 1/4" SCH. 80 PVC SOCKET WELD WITH VITON SEALS UNLESS OTHERWISE REQUIRED BY COMPONENTS.
 - INLET AND OUTLET SHALL BE 3/8" TUBE FITTING. QTY. OF 30 FT. OF 3/8" PE TUBING TO SHIP LOOSE WITH PANEL.
 - SENSORS, DGMA & D1C TO BE ORDERED SEPERATELY.
 - ALL DIMENSIONS ARE IN INCHES AND ARE SHOWN FOR REFERENCE ONLY.

| | | | | | | |
|-------------------------------------------------------------------------------------------------------------------------------------------------------------------|----------|-----------------------------------------------------------------------------------------------------------------------------------------------------------------------------------------------------------|--|---------------------------------------------------------------------------------------------------------------------------------------------------|------|-------|
| E | 06/08/10 | UPDATED BACK PANEL | | JDB | | |
| D | 05/28/08 | AS-BUILT | | ALS | | |
| REV | DATE | DESCRIPTION | | BY | APPD | REV'D |
| REVISIONS | | | | | | |
| CUSTOMER PROMINENT FLUID CONTROLS INC. (STANDARD CONTROL PACKAGE) | | | | | | |
| JOB No | | 7744258 | | PURCHASE ORDER No | | N/A |
| TITLE DIC CONTROL PACKAGE (BASIC) GENERAL ARRANGEMENT | | | | | | |
| THIS DRAWING IS THE PROPERTY OF PROMINENT FLUID CONTROLS INC. AND SHALL NOT BE COPIED OR TRANSFERRED WITHOUT THE WRITTEN CONSENT OF PROMINENT FLUID CONTROLS INC. | | | | | | |
| ENGINEERS SEAL | | <div><div></div><div><div>ProMinent[®] <u>THE PROMINENT GROUP OF COMPANIES</u></div></div></div> | | | | |
| | | PITTSBURGH, PA USA | | WWW.PROMINENT.US | | |
| | | PROMINENT FLUID CONTROLS LTD. 490 SOUTHGATE DRIVE. GUELPH, ONTARIO, CANADA N1H 6J3 TEL. 519 836 5692 FAX. 519 836 5226 | | PROMINENT FLUID CONTROLS INC. RIDC PARK WEST 136 INDUSTRY DRIVE, PITTSBURGH P.A., USA. 15275 TEL. 412 787 2484 FAX. 412 787 0704 | | |
| | | DESIGNED RJB | | APPROVED | | |
| | | DRAWN RJB | | SCALE N.T.S. | | |
| | | CHECKED RJB | | DATE 10/24/01 | | |
| DWG No | | | | REV | | PAGE |
| 7744258-200 | | | | E | | 1/1 |