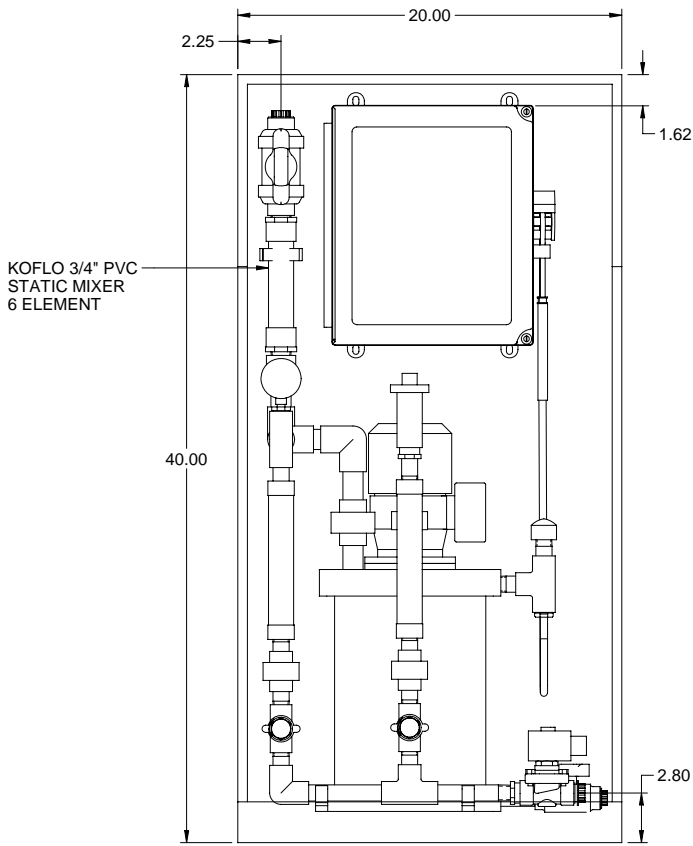
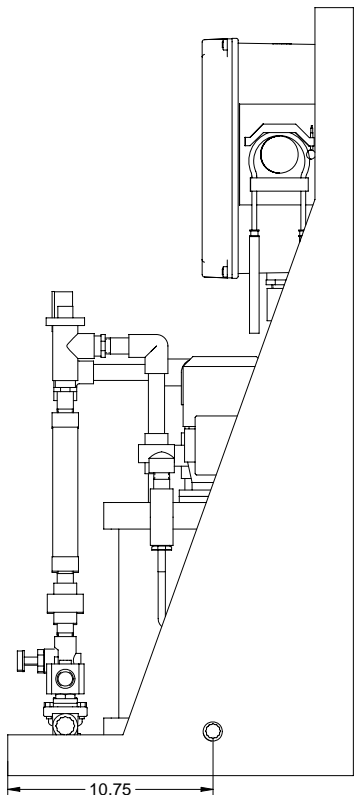


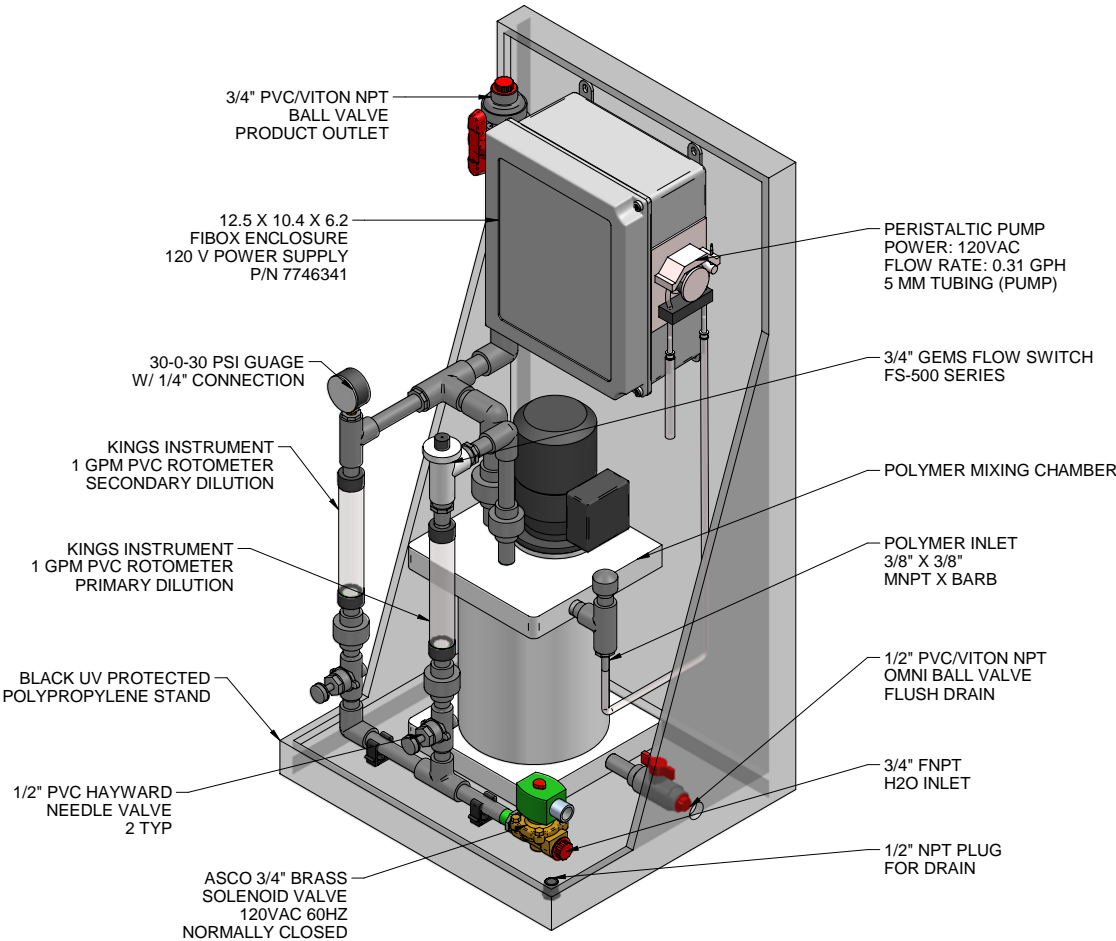
PLAN VIEW



FRONT VIEW

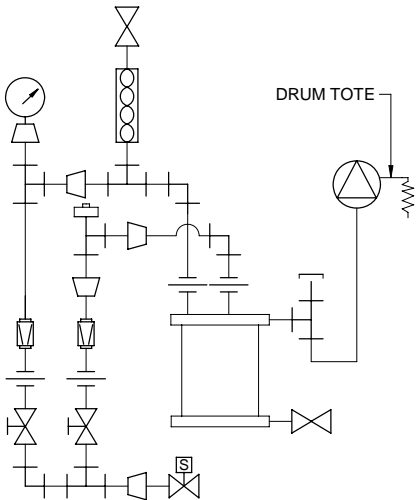
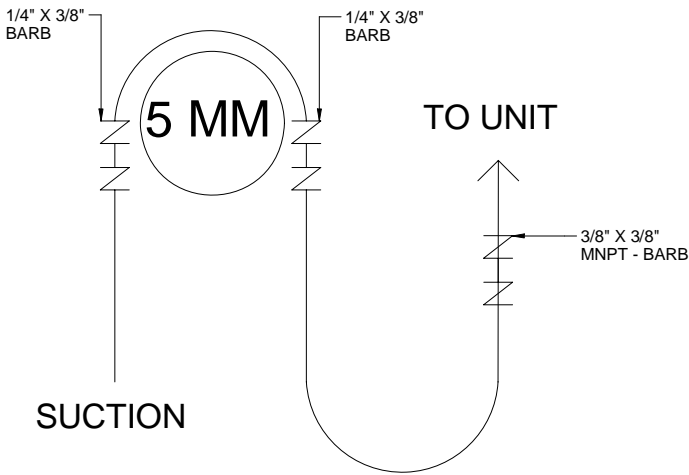


SIDE VIEW



ISOMETRIC VIEW

PUMP LAYOUT



PIPING SCHEMATIC

- NOTES:
1. ALL PIPING AND FITTINGS SHALL BE 1/2" SCH. 80 PVC SOCKET WELD WITH VITON SEALS UNLESS OTHERWISE REQUIRED BY COMPONENTS.
  2. DISCHARGE PIPING SHALL BE 3/4" SCH. 80 PVC SOCKET WELD WITH VITON SEALS UNLESS OTHERWISE REQUIRED BY COMPONENTS.
  3. ALL DIMENSIONS ARE IN INCHES AND ARE SHOWN FOR REFERENCE ONLY.
  4. (10FT) 1/2" X 3/8" PVC NYLOBRAID SUCTION TUBING, P/N 7744988, TO BE SHIPPED LOOSE WITH SKID.

B	06/28/10	REVISED NOTE TO 0.31	GJS		
A	05/25/10	REVISED NOTE 4 TO REMOVE PRESS REG	GJS		
0	06/11/09	FIRST ISSUE	ALS		
REV	DATE	DESCRIPTION	BY	APPD	REVD
REVISIONS					
CUSTOMER		PROMINENT FLUID CONTROLS			
JOB No		7746336	PURCHASE ORDER No		
TITLE		PROMIX "S" 60X2-0.31 T GENERAL ARRANGEMENT			
THIS DRAWING IS THE PROPERTY OF PROMINENT FLUID CONTROLS INC. AND SHALL NOT BE COPIED OR TRANSFERRED WITHOUT THE WRITTEN CONSENT OF PROMINENT FLUID CONTROLS INC.					
ENGINEERS SEAL		<div><div><div><div>pfc</div><div>ProMinent</div></div><div><div>ProMinent®</div><div>THE PROMINENT GROUP OF COMPANIES</div></div></div></div>			
		PITTSBURGH, PA USA		WWW.PROMINENT.US	
		PROMINENT FLUID CONTROLS LTD. 490 SOUTHGATE DRIVE. GUELPH, ONTARIO, CANADA N1H 6J3 TEL. 519 836 5692      FAX. 519 836 5226		PROMINENT FLUID CONTROLS INC. RIDC PARK WEST 136 INDUSTRY DRIVE, PITTSBURGH P.A., USA. 15275 TEL. 412 787 2484      FAX. 412 787 0704	
		DESIGNED LJM		APPROVED	
		DRAWN ALS		SCALE N.T.S.	
		CHECKED JMS		DATE 06/11/09	
DWG No			REV B	PAGE 1/1	
7746336-200					