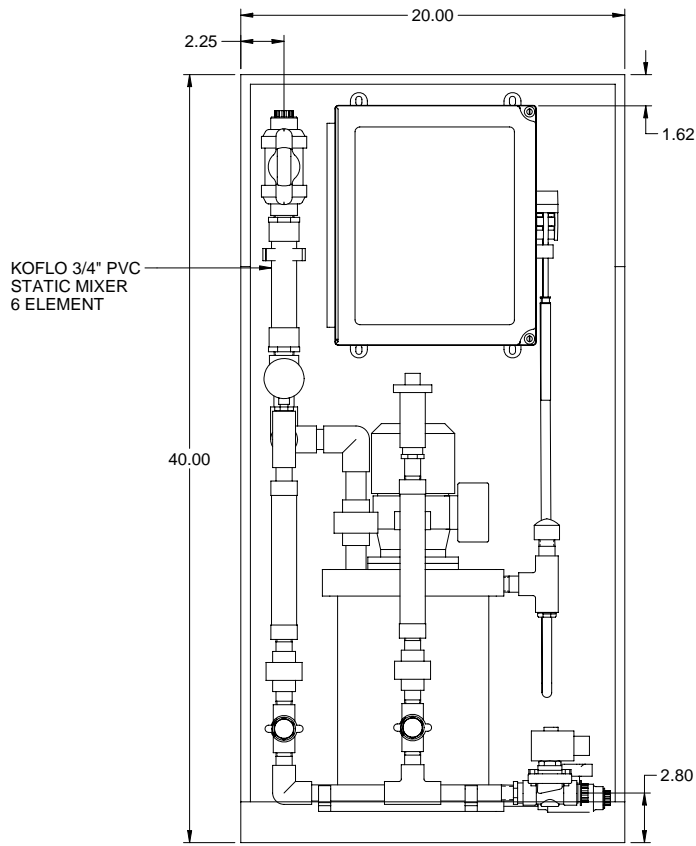
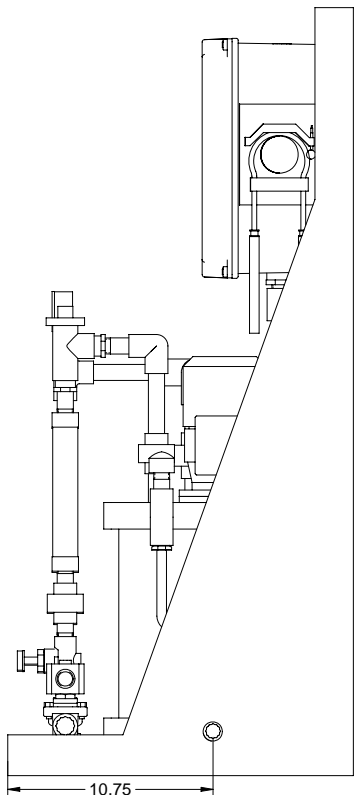


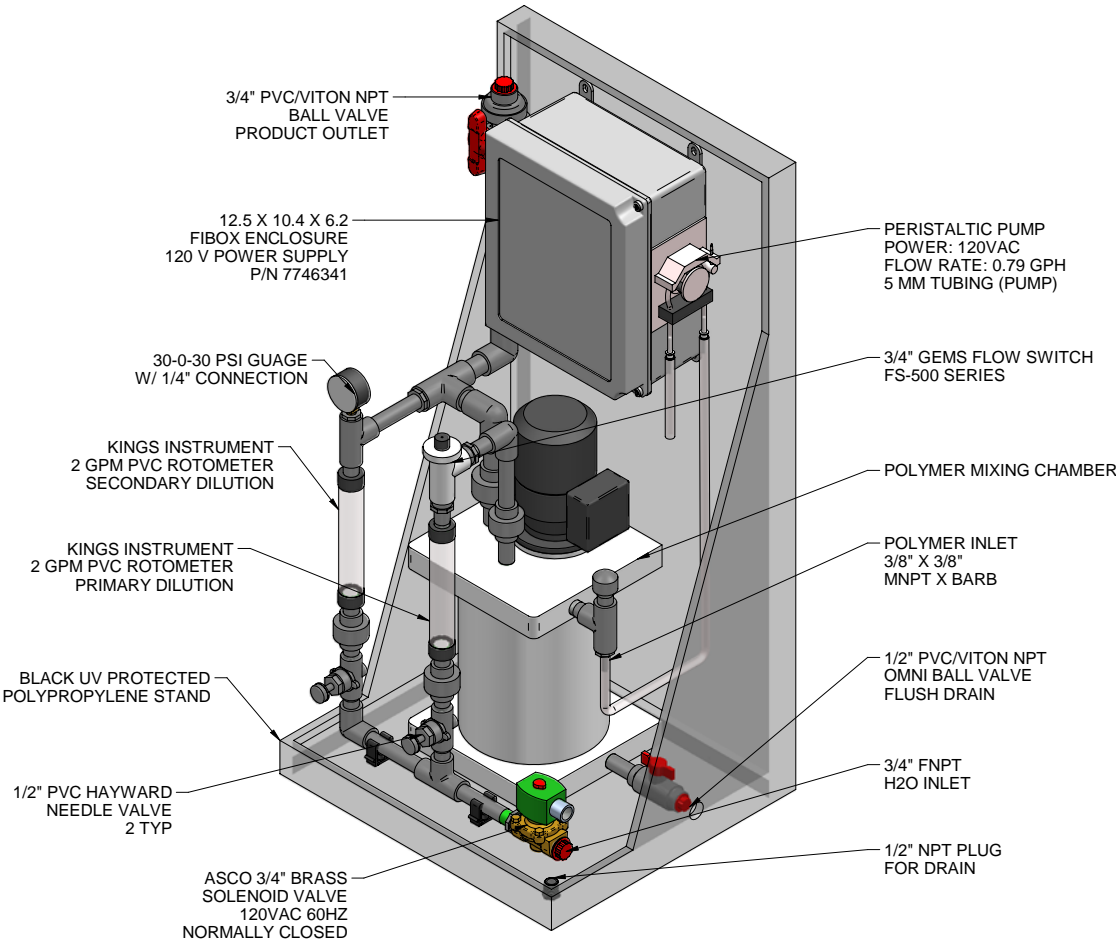
PLAN VIEW



FRONT VIEW

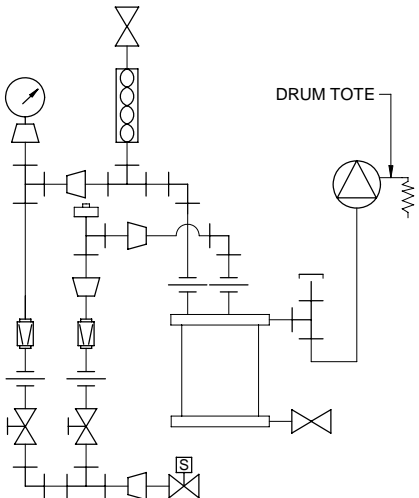
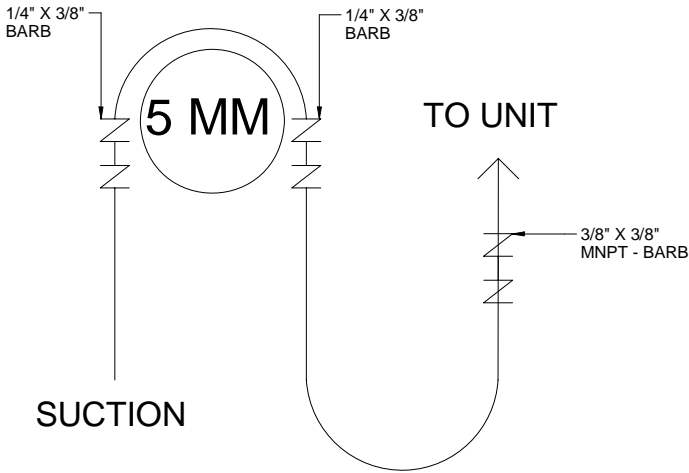


SIDE VIEW




ISOMETRIC VIEW

PUMP LAYOUT



PIPING SCHEMATIC

- NOTES:
1. ALL PIPING AND FITTINGS SHALL BE 1/2" SCH. 80 PVC SOCKET WELD WITH VITON SEALS UNLESS OTHERWISE REQUIRED BY COMPONENTS.
 2. DISCHARGE PIPING SHALL BE 3/4" SCH. 80 PVC SOCKET WELD WITH VITON SEALS UNLESS OTHERWISE REQUIRED BY COMPONENTS.
 3. ALL DIMENSIONS ARE IN INCHES AND ARE SHOWN FOR REFERENCE ONLY.
 4. (10FT) 1/2" X 3/8" PVC NYLOBRAID SUCTION TUBING, P/N 7744988, TO BE SHIPPED LOOSE WITH SKID.

B	06/28/10	REVISED NOTE TO 0.79	ALS		
A	05/25/10	REVISED NOTE 4 TO REMOVE PRESS REG	GJS		
0	06/11/09	FIRST ISSUE	ALS		
REV	DATE	DESCRIPTION	BY	APPD	REVD
REVISIONS					
CUSTOMER		PROMINENT FLUID CONTROLS			
JOB No		7746337	PURCHASE ORDER No		
TITLE		PROMIX "S" 120X2-0.79 T GENERAL ARRANGEMENT			
THIS DRAWING IS THE PROPERTY OF PROMINENT FLUID CONTROLS INC. AND SHALL NOT BE COPIED OR TRANSFERRED WITHOUT THE WRITTEN CONSENT OF PROMINENT FLUID CONTROLS INC.					
ENGINEERS SEAL		<div><div></div><div><div>ProMinent[®]</div><div>THE PROMINENT GROUP OF COMPANIES</div></div></div>			
		<div><div><div>PITTSBURGH, PA USA</div><div>WWW.PROMINENT.US</div><div>PROMINENT FLUID CONTROLS LTD. 490 SOUTHGATE DRIVE. GUELPH, ONTARIO, CANADA N1H 6J3 TEL. 519 836 5692 FAX. 519 836 5226</div><div>PROMINENT FLUID CONTROLS INC. RIDC PARK WEST 136 INDUSTRY DRIVE, PITTSBURGH P.A., USA. 15275 TEL. 412 787 2484 FAX. 412 787 0704</div><div>DESIGNED LJM APPROVED</div><div>DRAWN ALS SCALE N.T.S.</div><div>CHECKED JMS DATE 06/11/09</div></div></div>			
DWG No			REV B		PAGE 1/1
7746337-200					