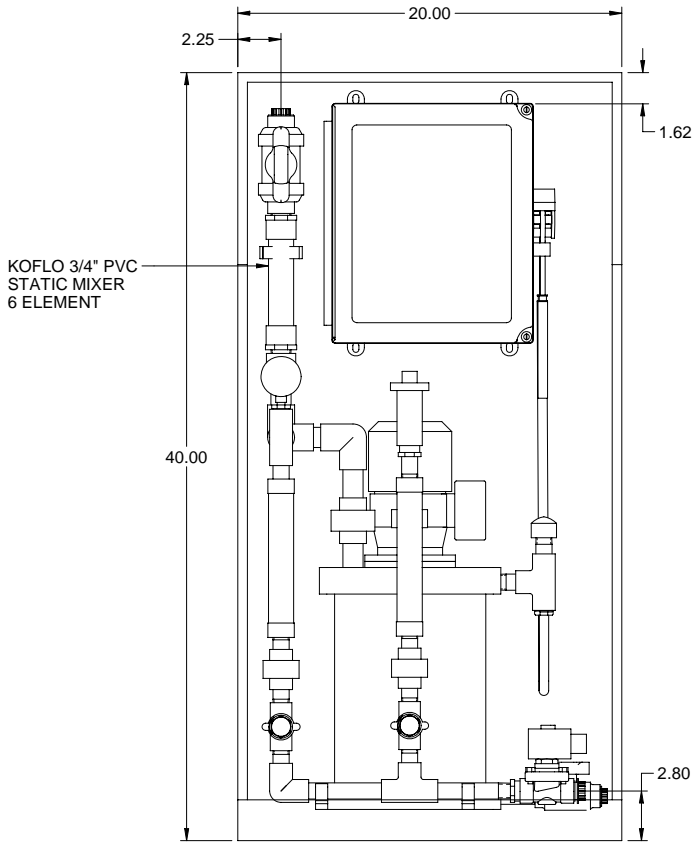
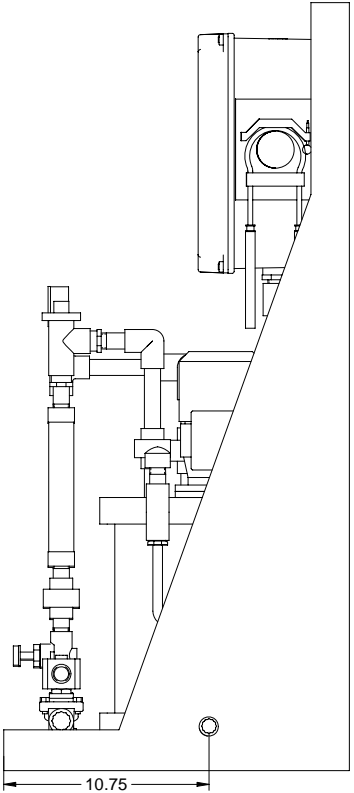


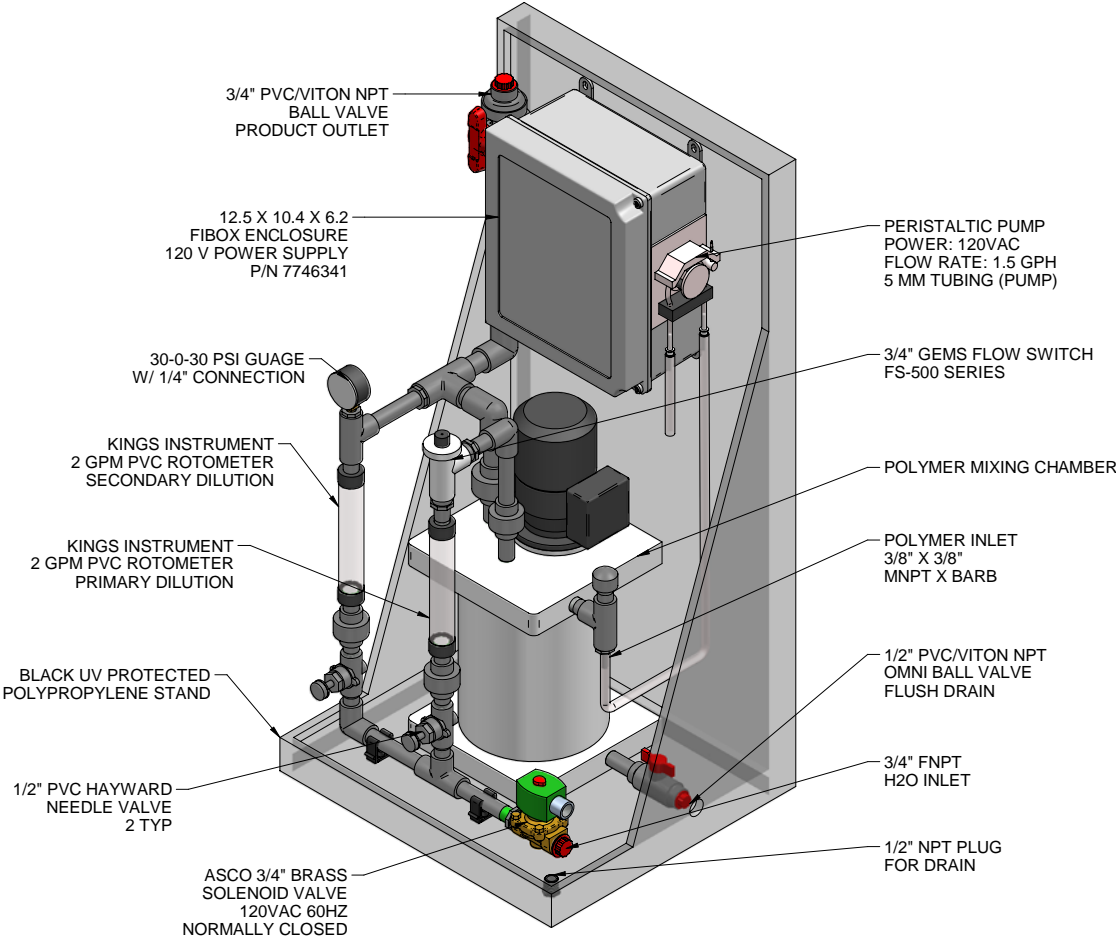
PLAN VIEW



FRONT VIEW

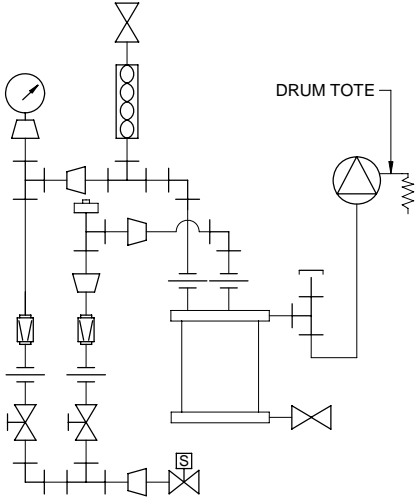
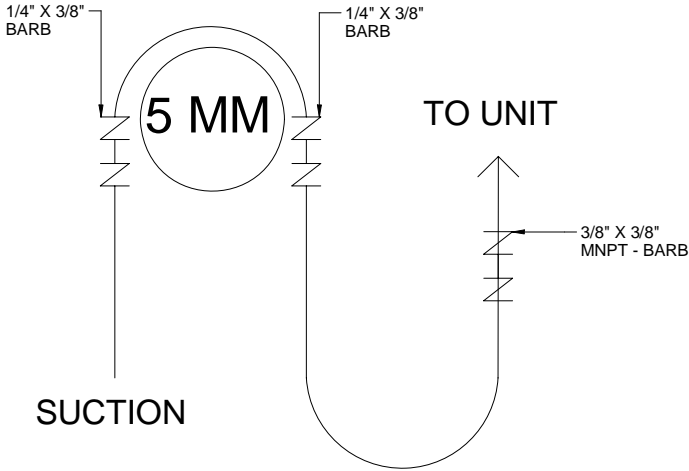


SIDE VIEW




ISOMETRIC VIEW

PUMP LAYOUT



PIPING SCHEMATIC

- NOTES:
- ALL PIPING AND FITTINGS SHALL BE 1/2" SCH. 80 PVC SOCKET WELD WITH VITON SEALS UNLESS OTHERWISE REQUIRED BY COMPONENTS.
  - DISCHARGE PIPING SHALL BE 3/4" SCH. 80 PVC SOCKET WELD WITH VITON SEALS UNLESS OTHERWISE REQUIRED BY COMPONENTS.
  - ALL DIMENSIONS ARE IN INCHES AND ARE SHOWN FOR REFERENCE ONLY.
  - (10FT) 1/2" X 3/8" PVC NYLOBRAID SUCTION TUBING, P/N 7744988, TO BE SHIPPED LOOSE WITH SKID.

B	06/28/10	REVISED NOTE TO 1.5		ALS		
A	05/25/10	REVISED NOTE 4 TO REMOVE PRESS REG		GJS		
0	06/11/09	FIRST ISSUE		ALS		
REV	DATE	DESCRIPTION		BY	APPD	REVD
REVISIONS						
CUSTOMER		PROMINENT FLUID CONTROLS				
JOB No		7746338		PURCHASE ORDER No		
TITLE		PROMIX "S" 120X2-1.5 T GENERAL ARRANGEMENT				
THIS DRAWING IS THE PROPERTY OF PROMINENT FLUID CONTROLS INC. AND SHALL NOT BE COPIED OR TRANSFERRED WITHOUT THE WRITTEN CONSENT OF PROMINENT FLUID CONTROLS INC.						
ENGINEERS SEAL		<div><div></div><div><div>ProMinent<sup>®</sup></div><div>THE PROMINENT GROUP OF COMPANIES</div></div></div>				
		<div><div><div>PITTSBURGH, PA USA</div><div>WWW.PROMINENT.US</div><div><div>PROMINENT FLUID CONTROLS LTD. 490 SOUTHGATE DRIVE. GUELPH, ONTARIO, CANADA N1H 6J3 TEL. 519 836 5692    FAX. 519 836 5226</div><div><div>PROMINENT FLUID CONTROLS INC. RIDC PARK WEST 136 INDUSTRY DRIVE, PITTSBURGH P.A., USA. 15275 TEL. 412 787 2484    FAX. 412 787 0704</div></div></div></div></div>				
		DESIGNED	LJM	APPROVED		
		DRAWN	ALS	SCALE	N.T.S.	
		CHECKED	JMS	DATE	06/11/09	
DWG No				REV	PAGE	
7746338-200				B	1/1	