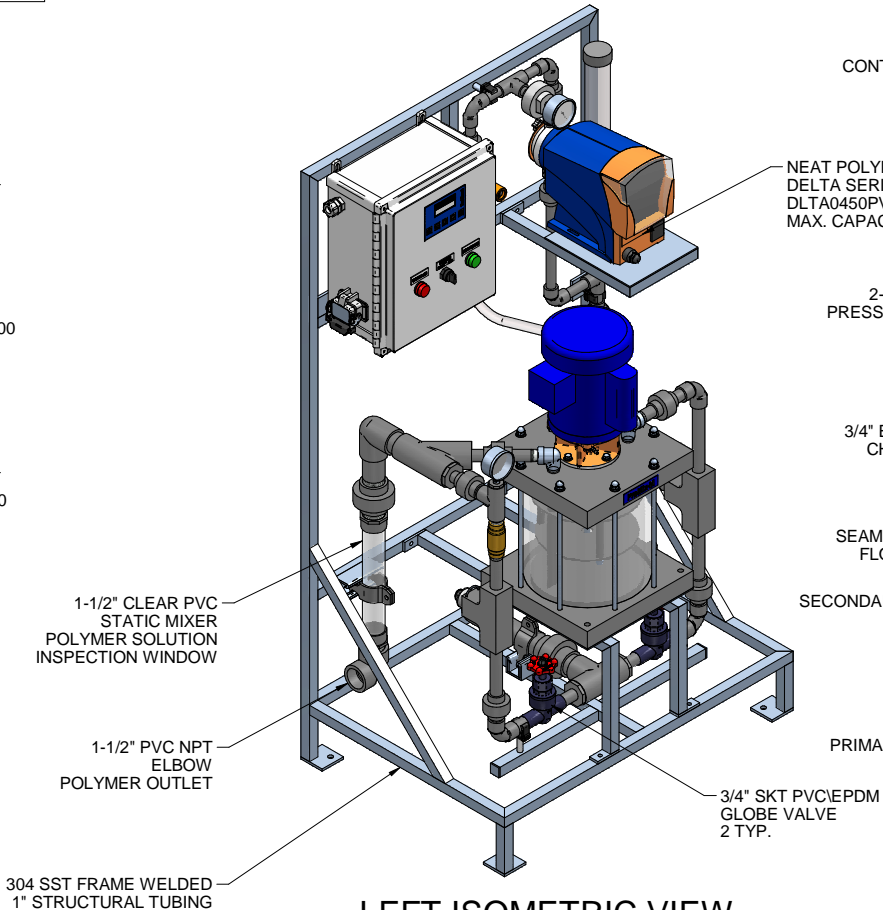
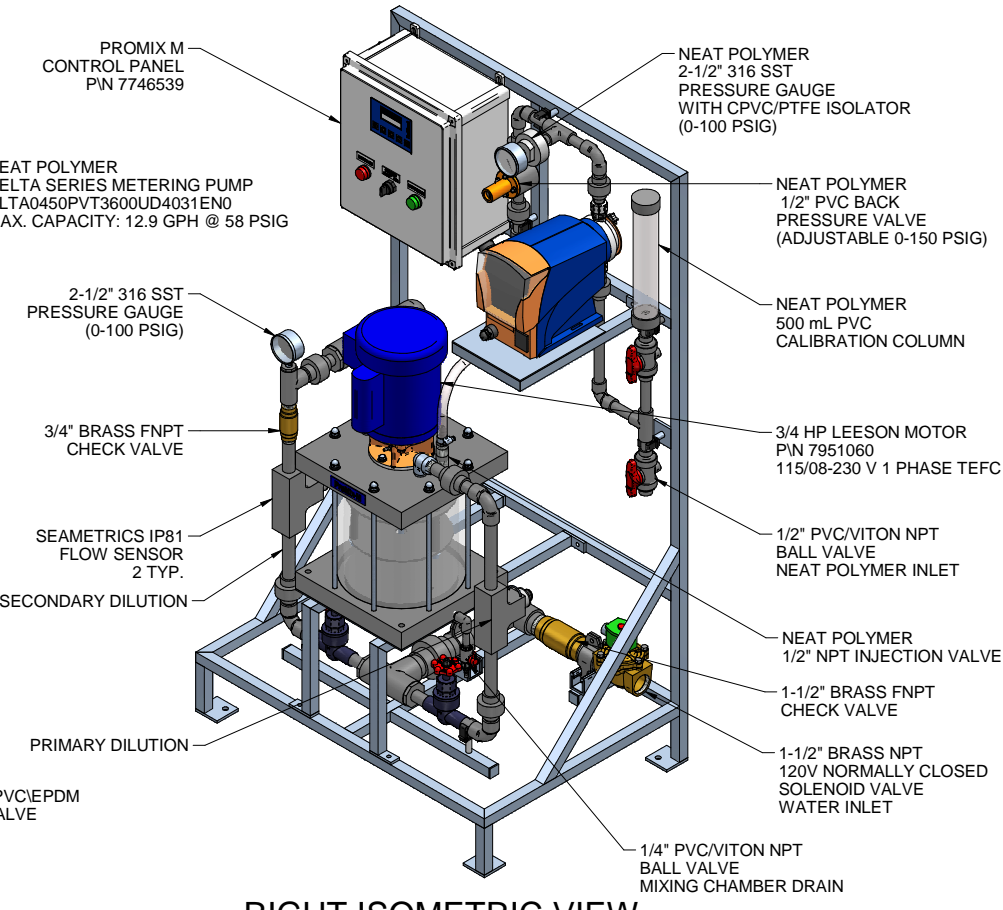


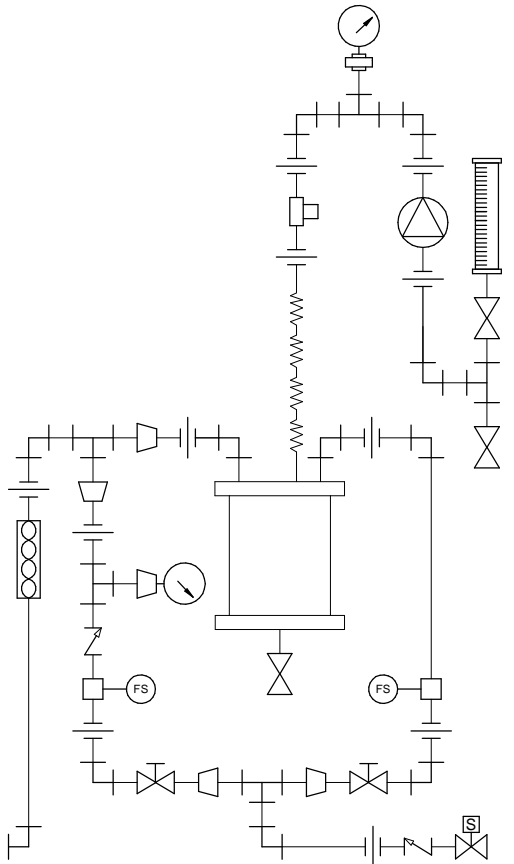
PLAN VIEW



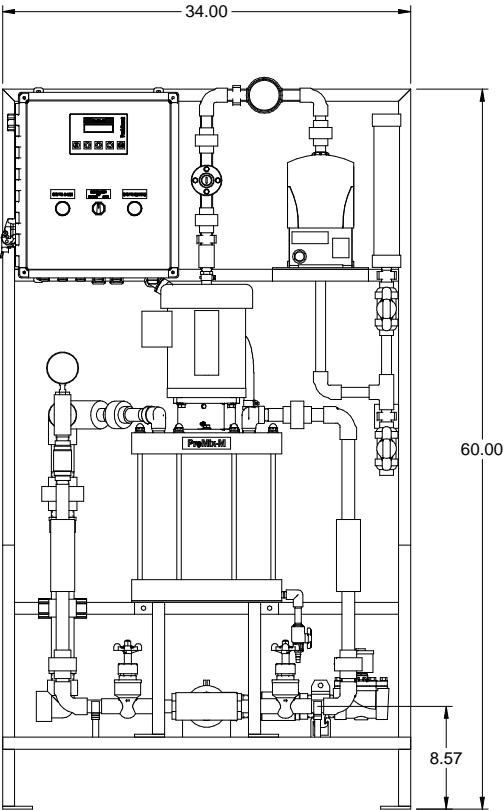
LEFT ISOMETRIC VIEW



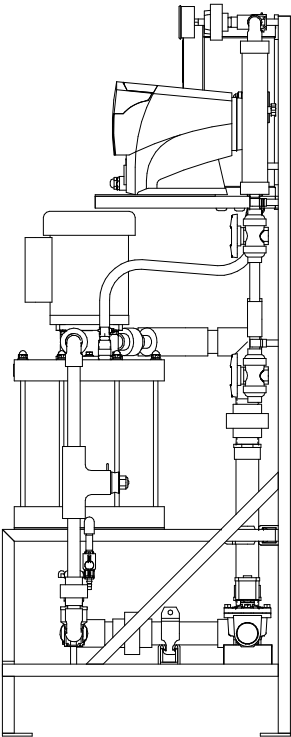
RIGHT ISOMETRIC VIEW



PIPING SCHEMATIC




FRONT VIEW



SIDE VIEW

- NOTES:
- ALL PIPING AND FITTINGS SHALL BE 1/2", 3/4" AND 1-1/2" SCH. 80 PVC SOCKET WELD WITH VITON SEALS AS REQUIRED BY COMPONENTS.
  - PUMP MAXIMUM CAPACITY RATES BASED ON PUMPING WATER. THE PUMP MAXIMUM CAPACITY PUMPING POLYMER IS 10.0 GPH @ 58 PSIG.
  - EMULSION POLYMER BLENDING SYSTEM WITH THREE ZONE PVC MIXING CHAMBER.
  - REQUIRED INCOMING POWER:  
120VAC, 60HZ, 1 PHASE, 20 AMP CURRENT RATING AT 120 VAC
  - ALL DIMENSIONS ARE IN INCHES AND ARE SHOWN FOR REFERENCE ONLY.

MAXIMUM TESTING PRESSURE =	150 PSI
MAXIMUM OPERATING PRESSURE =	58 PSI
CHEMICAL SERVICE =	POLYMER

D	04/14/11	ADDED SPRING TO DELTA PUMP IDENT CODE	GJS		
C	01/26/11	REMOVED SELF FILL OPTION	GJS		
REV	DATE	DESCRIPTION	BY	APPD	REVD
REVISIONS					
CUSTOMER <b>PROMINENT FLUID CONTROLS INC. (PROMIX M SYSTEM)</b>					
JOB No		7746546	PURCHASE ORDER No		
			N/A		
TITLE <b>PROMIX M_0-1500X2-10.0DB SYSTEM SKID GENERAL ARRANGEMENT</b>					
THIS DRAWING IS THE PROPERTY OF PROMINENT FLUID CONTROLS INC. AND SHALL NOT BE COPIED OR TRANSFERRED WITHOUT THE WRITTEN CONSENT OF PROMINENT FLUID CONTROLS INC.					
ENGINEERS SEAL		<div><div></div><div><b>ProMinent</b><sup>®</sup> THE PROMINENT GROUP OF COMPANIES</div></div>			
		<div><div><b>PITTSBURGH, PA USA</b></div><div><b>PROMINENT FLUID CONTROLS LTD.</b> 490 SOUTHGATE DRIVE. GUELPH, ONTARIO, CANADA N1H 6J3 TEL. 519 836 5692      FAX. 519 836 5226</div></div>			
		<div><div><b>WWW.PROMINENT.US</b></div><div><b>PROMINENT FLUID CONTROLS INC.</b> RIDC PARK WEST 136 INDUSTRY DRIVE, PITTSBURGH P.A., USA. 15275 TEL. 412 787 2484      FAX. 412 787 0704</div></div>			
		DESIGNED	GJS	APPROVED	
		DRAWN	GJS	SCALE	
		CHECKED	JMS	DATE	
				02/03/10	
DWG No			REV		PAGE
7746546-200			D		1/1