

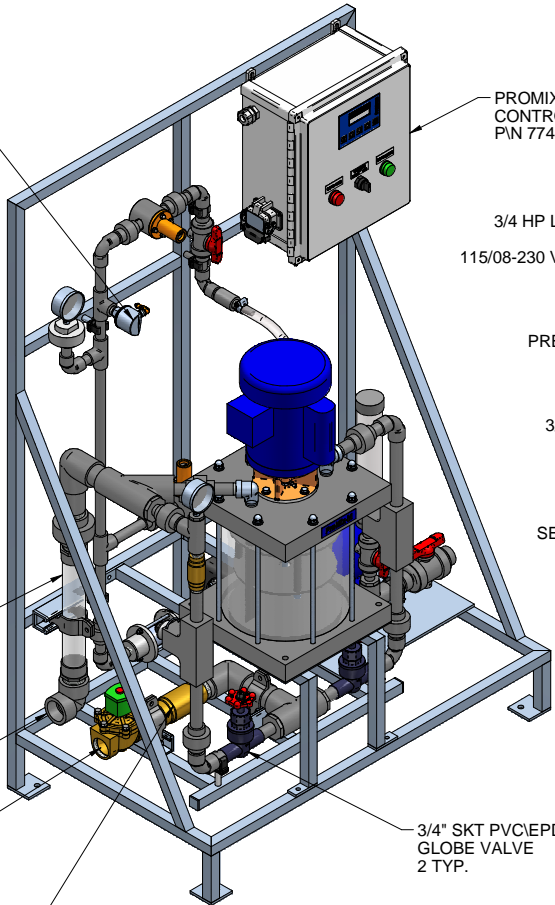
PLAN VIEW

1-1/2" CLEAR PVC
STATIC MIXER
POLYMER SOLUTION
INSPECTION WINDOW

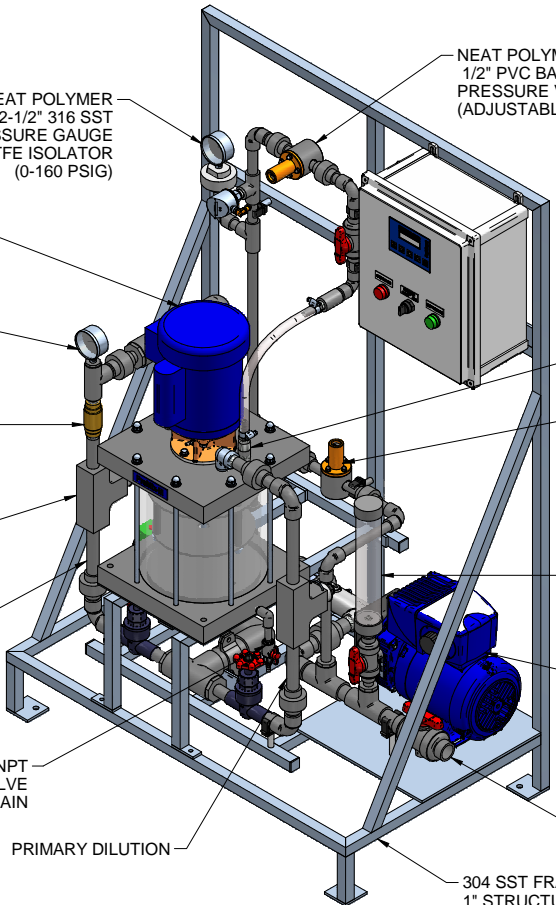
1-1/2" PVC NPT
ELBOW
POLYMER OUTLET

1-1/2" BRASS NPT
120V NORMALLY CLOSED
SOLENOID VALVE
WATER INLET

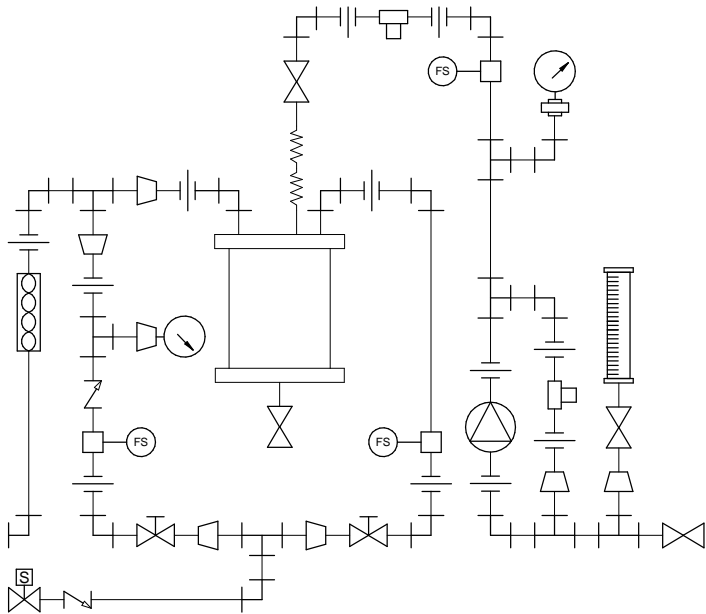
1-1/2" BRASS FNPT
CHECK VALVE



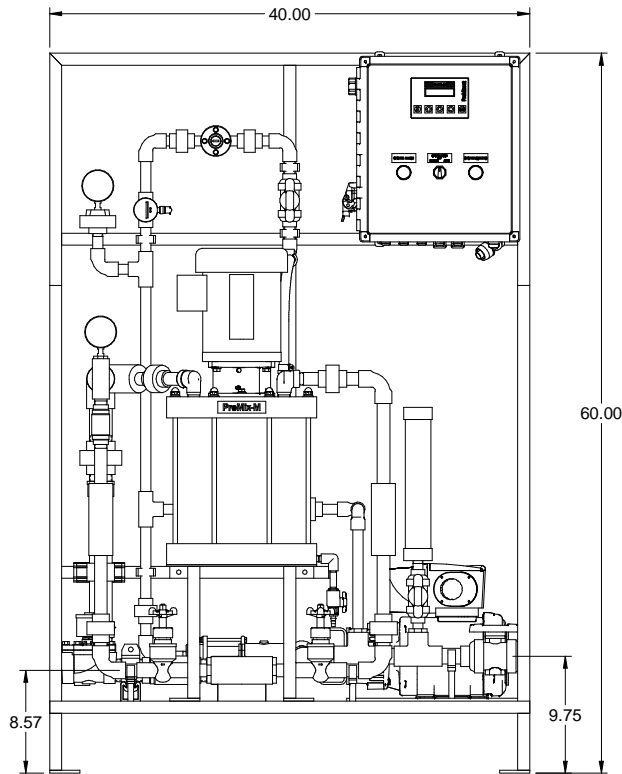
LEFT ISOMETRIC VIEW



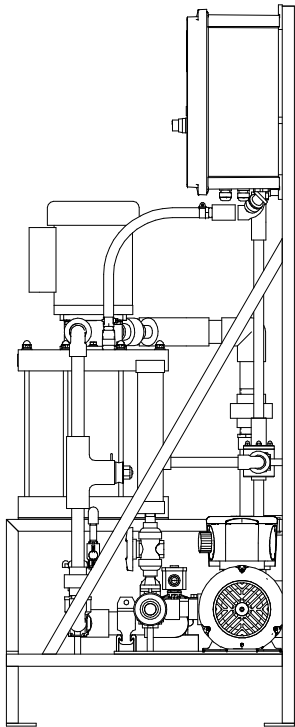
RIGHT ISOMETRIC VIEW



PIPING SCHEMATIC




FRONT VIEW



SIDE VIEW

- NOTES:
- ALL PIPING AND FITTINGS SHALL BE 1/2", 3/4", 1" AND 1-1/2" SCH. 80 PVC SOCKET WELD WITH VITON SEALS AS REQUIRED BY COMPONENTS.
 - EMULSION POLYMER BLENDING SYSTEM WITH THREE ZONE PVC MIXING CHAMBER.
 - REQUIRED INCOMING POWER:
120VAC, 60HZ, 1 PHASE, 20 AMP CURRENT RATING AT 120 VAC
 - ALL DIMENSIONS ARE IN INCHES AND ARE SHOWN FOR REFERENCE ONLY.

MAXIMUM TESTING PRESSURE =	150 PSI
MAXIMUM OPERATING PRESSURE =	100 PSI
CHEMICAL SERVICE =	POLYMER

C	01/26/11	REMOVED SELF FILL OPTION		GJS		
REV	DATE	DESCRIPTION		BY	APPD	REVD
REVISIONS						
CUSTOMER PROMINENT FLUID CONTROLS INC. (PROMIX M SYSTEM)						
JOB No		7746548		PURCHASE ORDER No		N/A
TITLE PROMIX M_0-1500X2-10.0PB SYSTEM SKID GENERAL ARRANGEMENT						
THIS DRAWING IS THE PROPERTY OF PROMINENT FLUID CONTROLS INC. AND SHALL NOT BE COPIED OR TRANSFERRED WITHOUT THE WRITTEN CONSENT OF PROMINENT FLUID CONTROLS INC.						
ENGINEERS SEAL		<div><div></div><div>ProMinent[®] THE PROMINENT GROUP OF COMPANIES</div></div>				
		PITTSBURGH, PA USA		WWW.PROMINENT.US		
		PROMINENT FLUID CONTROLS LTD. 490 SOUTHGATE DRIVE. GUELPH, ONTARIO, CANADA N1H 6J3 TEL. 519 836 5692 FAX. 519 836 5226		PROMINENT FLUID CONTROLS INC. RIDC PARK WEST 136 INDUSTRY DRIVE, PITTSBURGH P.A., USA. 15275 TEL. 412 787 2484 FAX. 412 787 0704		
		DESIGNED GJS		APPROVED		
		DRAWN GJS		SCALE N.T.S.		
		CHECKED JMS		DATE 03/04/10		
DWG No				REV		PAGE
7746548-200				C		1/1