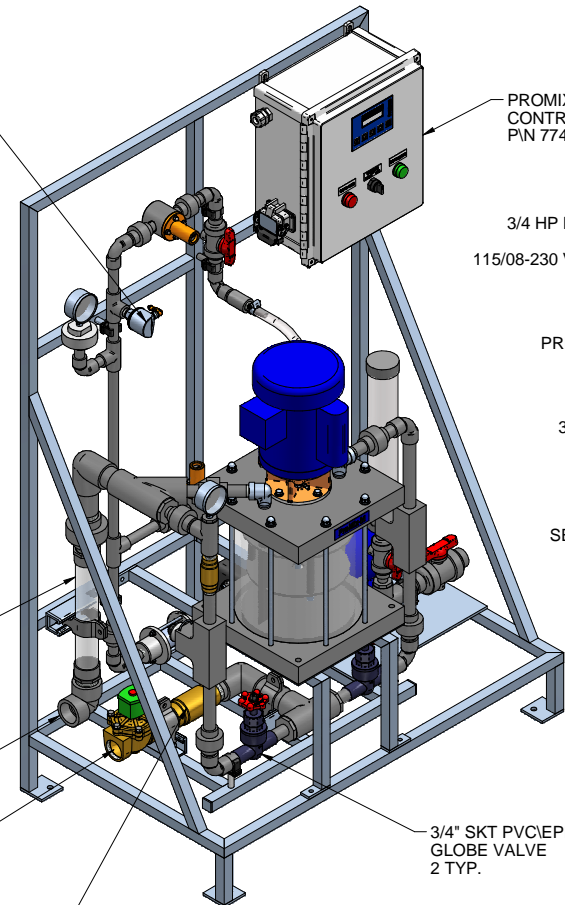


1-1/2" CLEAR PVC  
STATIC MIXER  
POLYMER SOLUTION  
INSPECTION WINDOW

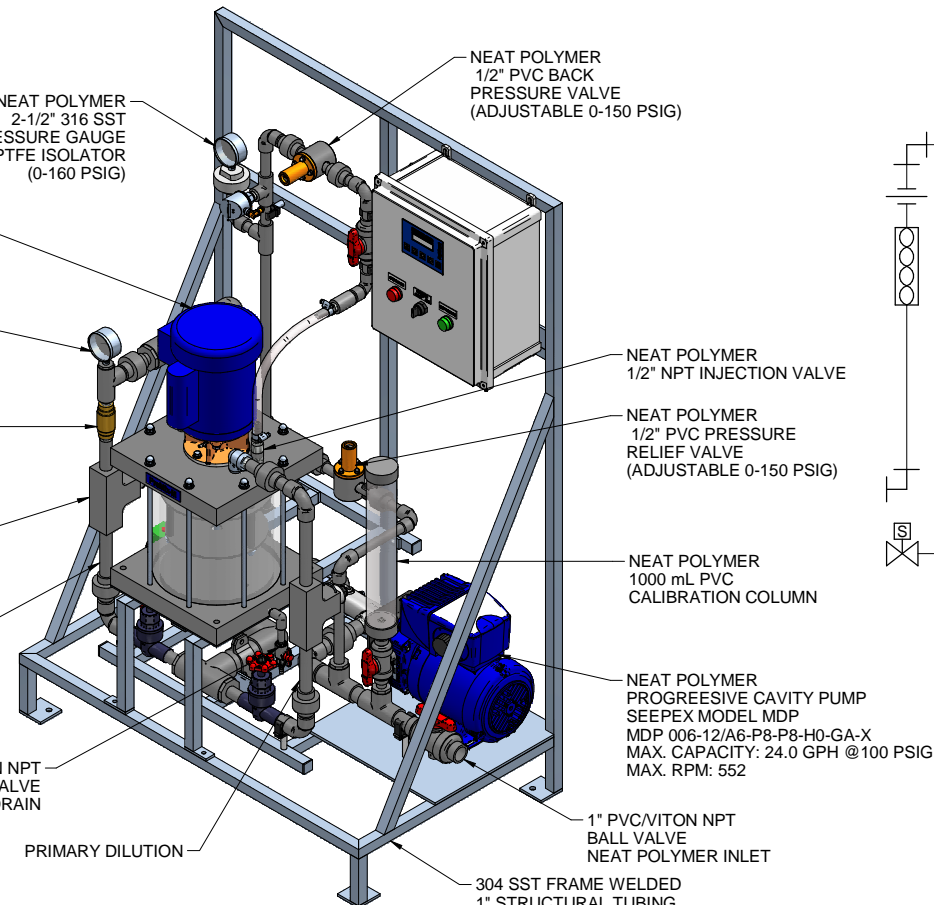
1-1/2" PVC NPT  
ELBOW  
POLYMER OUTLET

1-1/2" BRASS NPT  
120V NORMALLY CLOSED  
SOLENOID VALVE  
WATER INLET

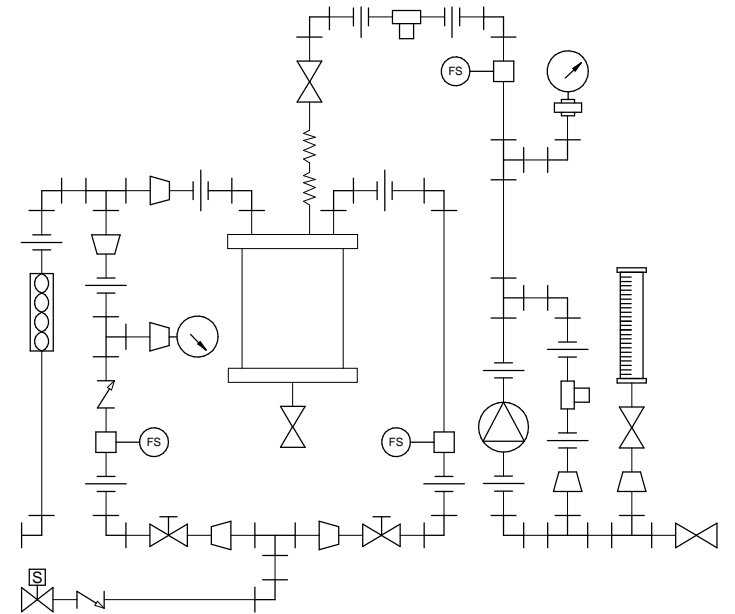
1-1/2" BRASS FNPT  
CHECK VALVE



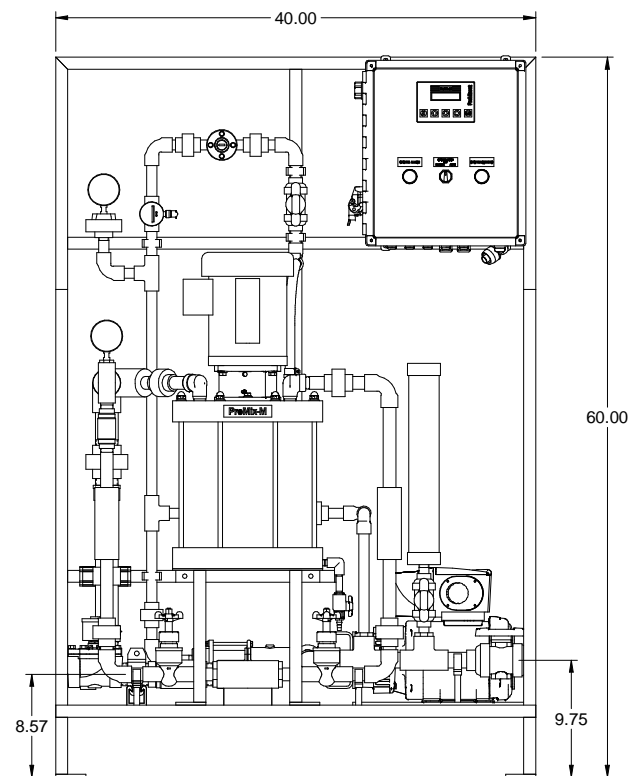
LEFT ISOMETRIC VIEW



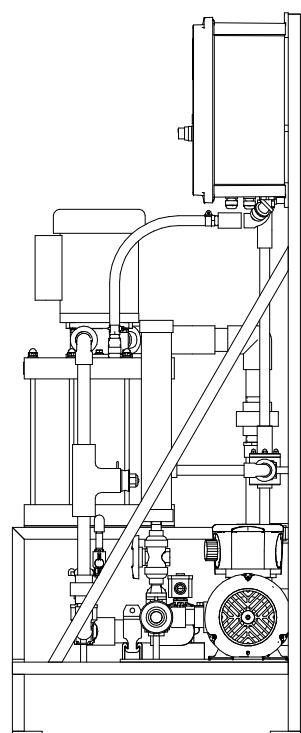
RIGHT ISOMETRIC VIEW



- NOTES:
- ALL PIPING AND FITTINGS SHALL BE 1/2", 3/4", 1" AND 1-1/2" SCH. 80 PVC SOCKET WELD WITH VITON SEALS AS REQUIRED BY COMPONENTS.
  - EMULSION POLYMER BLENDING SYSTEM WITH THREE ZONE PVC MIXING CHAMBER.
  - REQUIRED INCOMING POWER:  
  
120VAC, 60HZ, 1 PHASE, 20 AMP CURRENT RATING AT 120 VAC
  - ALL DIMENSIONS ARE IN INCHES AND ARE SHOWN FOR REFERENCE ONLY.




FRONT VIEW



SIDE VIEW

MAXIMUM TESTING PRESSURE =	150 PSI
MAXIMUM OPERATING PRESSURE =	100 PSI
CHEMICAL SERVICE =	POLYMER

C	01/26/11	REMOVED SELF FILL OPTION		GJS	
REV	DATE	DESCRIPTION		BY	APPD
REVISIONS					
CUSTOMER <b>PROMINENT FLUID CONTROLS INC. (PROMIX M SYSTEM)</b>					
JOB No		7746549	PURCHASE ORDER No		N/A
TITLE <b>PROMIX M_0-1500X2-24.0PB SYSTEM SKID GENERAL ARRANGEMENT</b>					
THIS DRAWING IS THE PROPERTY OF PROMINENT FLUID CONTROLS INC. AND SHALL NOT BE COPIED OR TRANSFERRED WITHOUT THE WRITTEN CONSENT OF PROMINENT FLUID CONTROLS INC.					
ENGINEERS SEAL		<div><div></div><div><b>ProMinent<sup>®</sup></b> THE PROMINENT GROUP OF COMPANIES</div></div>			
		<div><div><div>PITTSBURGH, PA USA</div><div>PROMINENT FLUID CONTROLS LTD. 490 SOUTHGATE DRIVE. GUELPH, ONTARIO, CANADA N1H 6J3 TEL 519 836 5692      FAX 519 836 5226</div></div><div><div>WWW.PROMINENT.US</div><div>PROMINENT FLUID CONTROLS INC. RIDC PARK WEST 136 INDUSTRY DRIVE, PITTSBURGH P.A., USA. 15275 TEL 412 787 2484      FAX 412 787 0704</div></div></div>			
		DESIGNED	GJS	APPROVED	
		DRAWN	GJS	SCALE	
		CHECKED	JMS	DATE	
				03/04/10	
DWG No			REV		PAGE
7746549-200			C		1/1