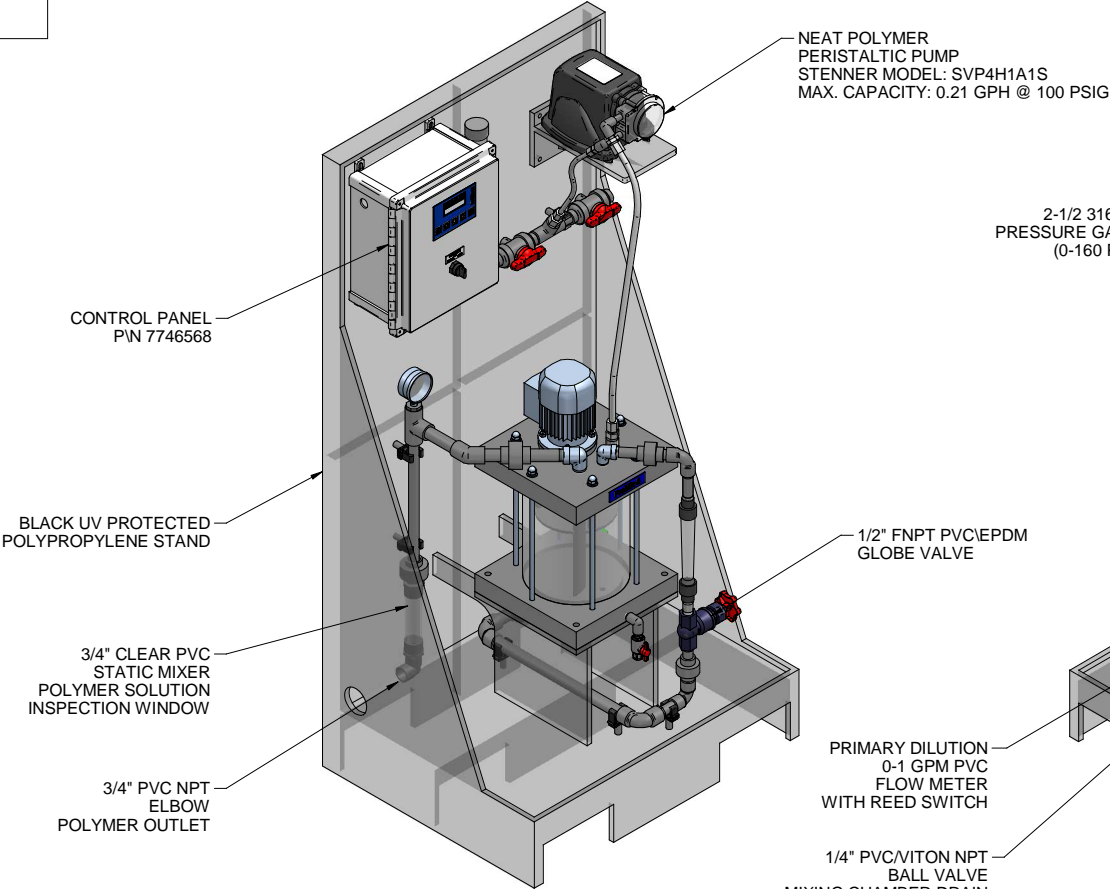
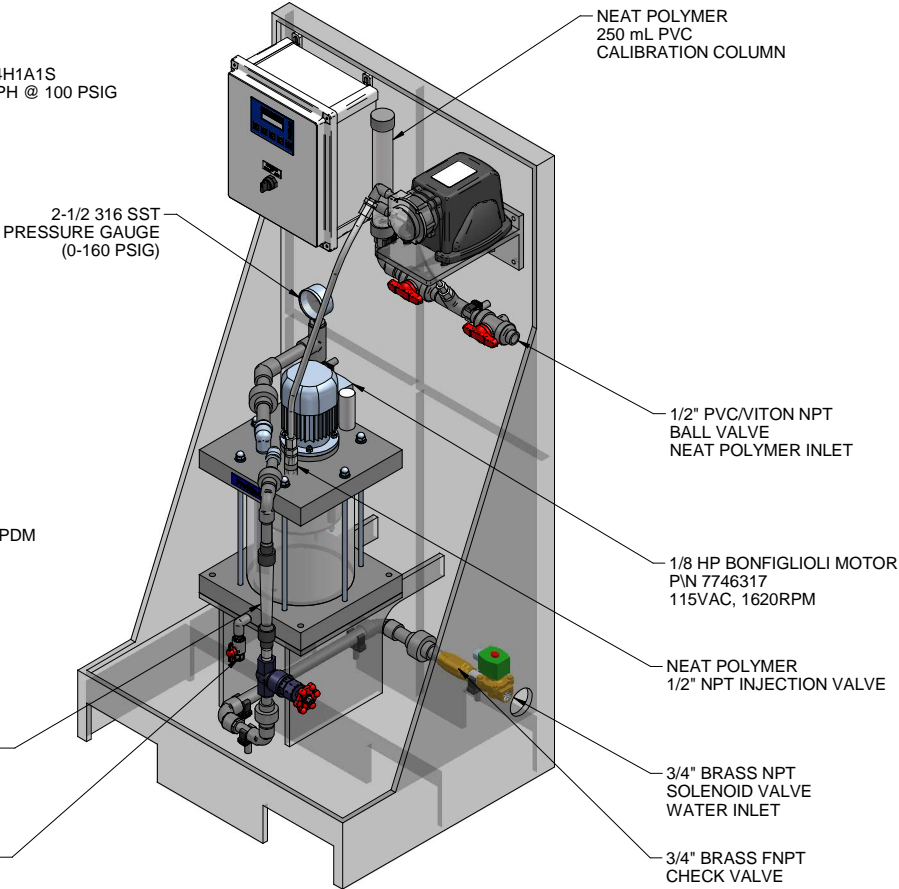


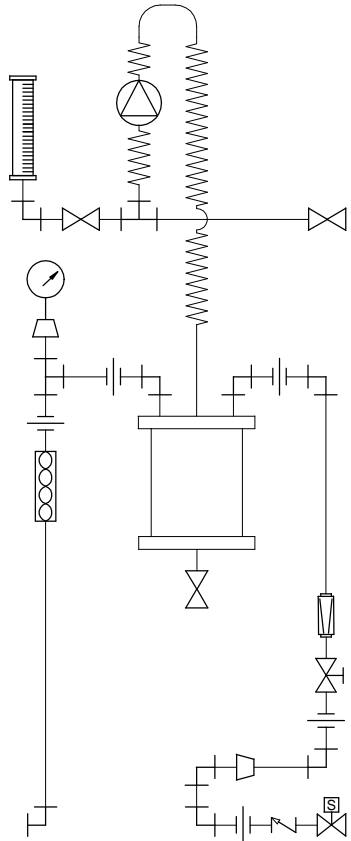
PLAN VIEW



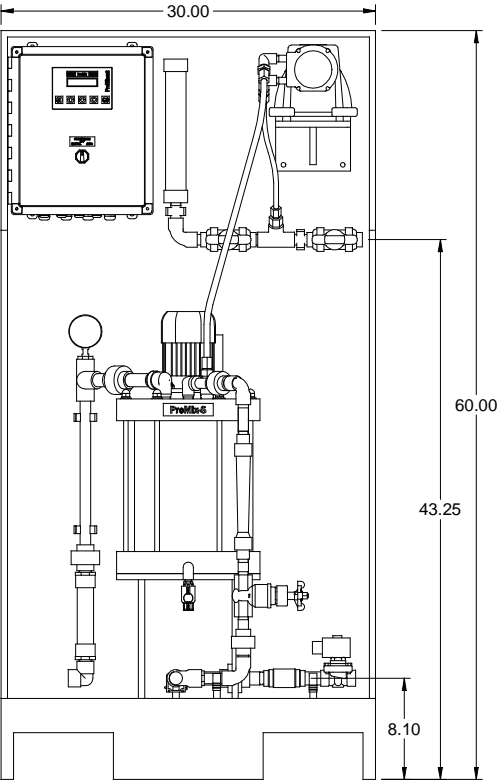
LEFT ISOMETRIC VIEW



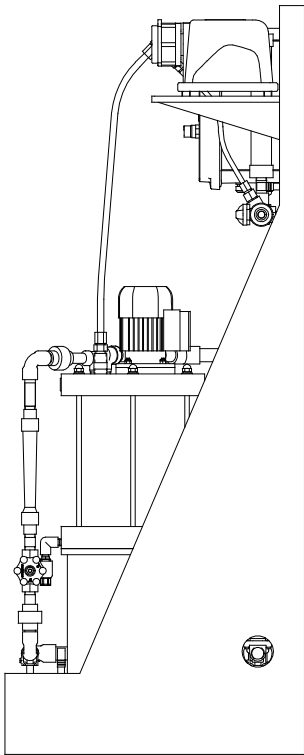
RIGHT ISOMETRIC VIEW



PIPING SCHEMATIC



FRONT VIEW



SIDE VIEW

- NOTES:
- ALL PIPING AND FITTINGS SHALL BE 1/2" AND 3/4" SCH. 80 PVC SOCKET WELD WITH VITON SEALS AS REQUIRED BY COMPONENTS.
  - EMULSION POLYMER BLENDING SYSTEM WITH THREE ZONE PVC MIXING CHAMBER.
  - REQUIRED INCOMING POWER:  
120VAC, 60HZ, 1 PHASE, 20 AMP CURRENT RATING AT 120 VAC
  - ALL DIMENSIONS ARE IN INCHES AND ARE SHOWN FOR REFERENCE ONLY.

B	11/04/10	DELETED COMPONENTS	GJS		
A	10/22/10	REVISED POLYMER INLET	GJS		
0	07/26/10	FIRST ISSUE	GJS		
REV	DATE	DESCRIPTION	BY	APPD	REVD

REVISIONS			
CUSTOMER	PROMINENT FLUID CONTROLS INC. (PROMIX S SYSTEM)		
JOB No	7746602	PURCHASE ORDER No	N/A
TITLE	PROMIX S_60-0.21TA SYSTEM SKID GENERAL ARRANGEMENT		

THIS DRAWING IS THE PROPERTY OF PROMINENT FLUID CONTROLS INC. AND SHALL NOT BE COPIED OR TRANSFERRED WITHOUT THE WRITTEN CONSENT OF PROMINENT FLUID CONTROLS INC.

ENGINEERS SEAL		
	PITTSBURGH, PA USA	WWW.PROMINENT.US
	PROMINENT FLUID CONTROLS LTD. 490 SOUTHGATE DRIVE. GUELPH, ONTARIO, CANADA N1H 6J3 TEL 519 836 5692 FAX 519 836 5226	PROMINENT FLUID CONTROLS INC. RIDC PARK WEST 136 INDUSTRY DRIVE, PITTSBURGH P.A., USA. 15275 TEL 412 787 2484 FAX 412 787 0704
	DESIGNED <b>GJS</b>	APPROVED
	DRAWN <b>GJS</b>	SCALE <b>N.T.S.</b>
CHECKED <b>JMS</b>		DATE <b>07/26/10</b>

MAXIMUM TESTING PRESSURE =	150 PSI
MAXIMUM OPERATING PRESSURE =	100 PSI
CHEMICAL SERVICE = POLYMER	

DWG No	7746602-200	REV	B	PAGE	1/1
--------	-------------	-----	---	------	-----