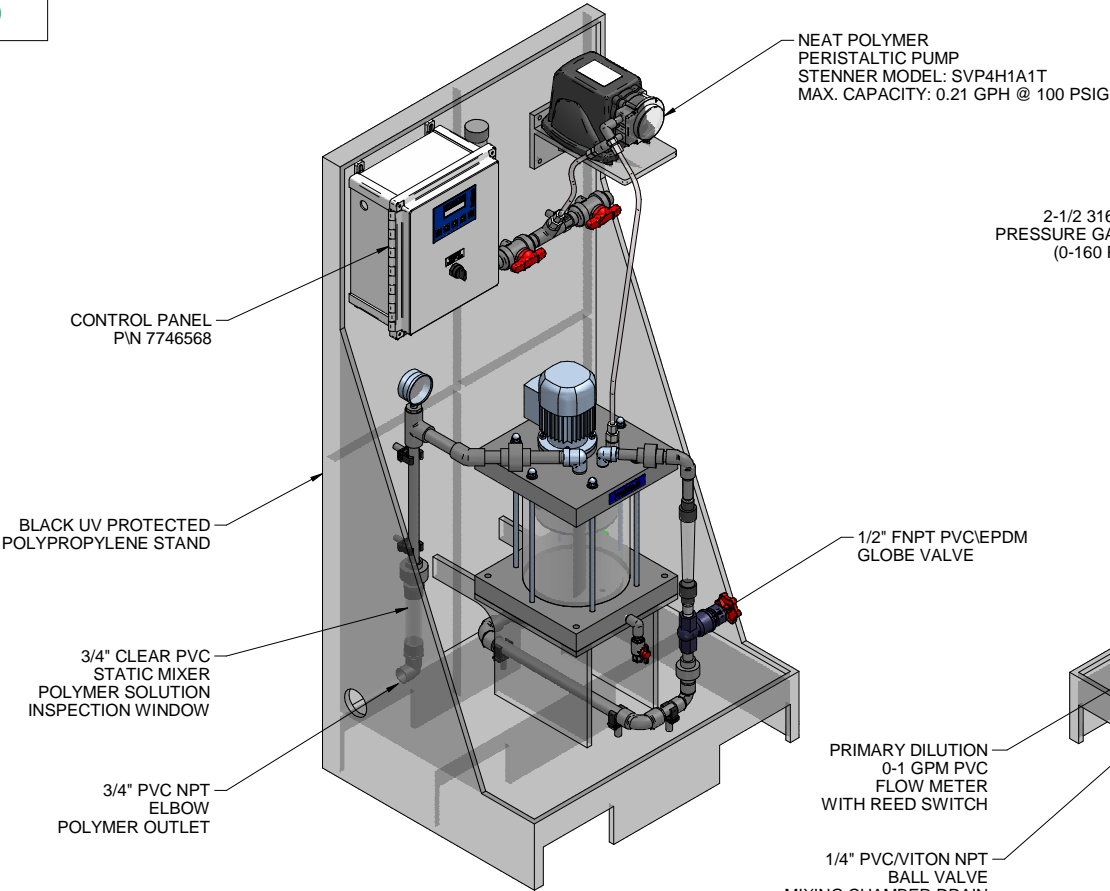
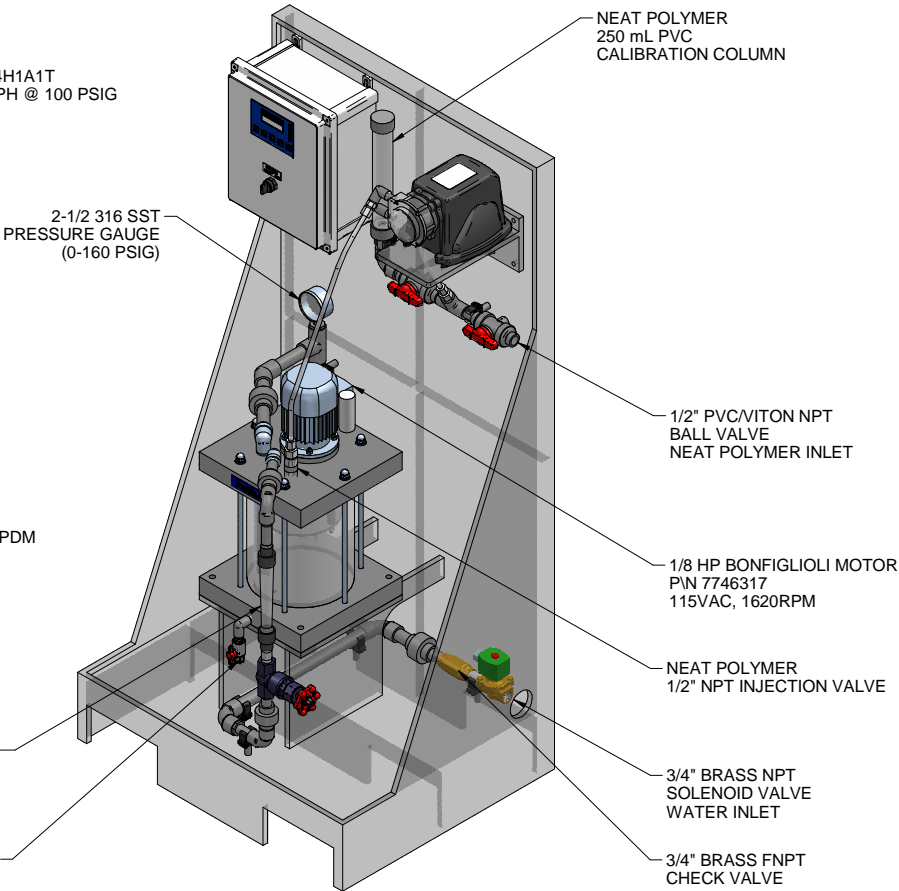


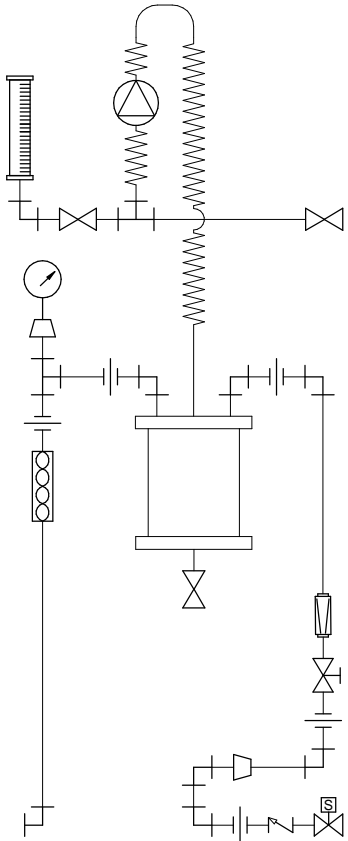
PLAN VIEW



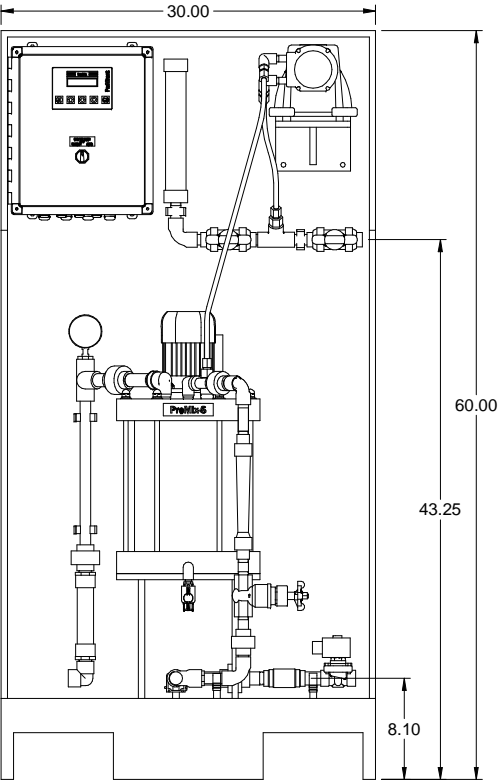
LEFT ISOMETRIC VIEW



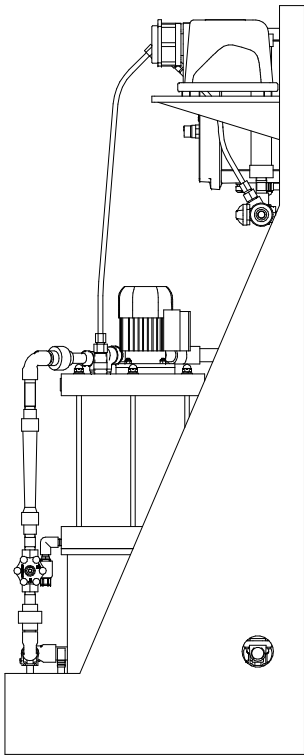
RIGHT ISOMETRIC VIEW



PIPING SCHEMATIC



FRONT VIEW



SIDE VIEW

- NOTES:
- ALL PIPING AND FITTINGS SHALL BE 1/2" AND 3/4" SCH. 80 PVC SOCKET WELD WITH VITON SEALS AS REQUIRED BY COMPONENTS.
  - EMULSION POLYMER BLENDING SYSTEM WITH THREE ZONE PVC MIXING CHAMBER.
  - REQUIRED INCOMING POWER:  
120VAC, 60HZ, 1 PHASE, 20 AMP CURRENT RATING AT 120 VAC
  - ALL DIMENSIONS ARE IN INCHES AND ARE SHOWN FOR REFERENCE ONLY.

|   |          |  |                   |      |      |
|---|----------|--|-------------------|------|------|
|   |          |  |                   |      |      |
| D   | 04/19/11 | CHANGED PUMP TUBING TO TYGOTHANE   | GJS               |      |      |
| C   | 12/15/10 | CHANGED 1/2" TUBING TO 3/8" TUBING   | GJS               |      |      |
| REV   | DATE     | DESCRIPTION  | BY                | APPD | REVD |
| REVISIONS   |          |  |                   |      |      |
| CUSTOMER PROMINENT FLUID CONTROLS INC.<br>(PROMIX S SYSTEM)   |          |  |                   |      |      |
| JOB No  |          | 7746602  | PURCHASE ORDER No |      | N/A  |
| TITLE PROMIX S_60-0.21TA SYSTEM SKID<br>GENERAL ARRANGEMENT   |          |  |                   |      |      |
| THIS DRAWING IS THE PROPERTY OF PROMINENT FLUID CONTROLS INC. AND SHALL NOT BE COPIED OR TRANSFERRED WITHOUT THE WRITTEN CONSENT OF PROMINENT FLUID CONTROLS INC. |          |  |                   |      |      |
| ENGINEERS SEAL  |          | <div><div><div><div></div><div>pfc</div><div>ProMinent</div></div><div><div>ProMinent®</div><div>THE PROMINENT GROUP OF COMPANIES</div></div></div><div><div>PITTSBURGH, PA USA</div><div>WWW.PROMINENT.US</div><div><div>PROMINENT FLUID CONTROLS LTD.<br/>490 SOUTHGATE DRIVE.<br/>GUELPH, ONTARIO, CANADA<br/>N1H 6J3<br/>TEL 519 836 5692    FAX 519 836 5226</div><div><div>PROMINENT FLUID CONTROLS INC.<br/>RIDC PARK WEST<br/>136 INDUSTRY DRIVE,<br/>PITTSBURGH P.A., USA. 15275<br/>TEL 412 787 2484    FAX 412 787 0704</div></div><div><div>DESIGNED</div><div>GJS</div></div><div><div>APPROVED</div><div></div></div><div><div>DRAWN</div><div>GJS</div></div><div><div>SCALE</div><div>N.T.S.</div></div><div><div>CHECKED</div><div>JMS</div></div><div><div>DATE</div><div>07/26/10</div></div></div></div></div> |                   |      |      |
|   |          |  |                   |      |      |
|   |          |  |                   |      |      |
|   |          |  |                   |      |      |
|   |          |  |                   |      |      |
|   |          |  |                   |      |      |
|   |          |  |                   |      |      |
|   |          |  |                   |      |      |
| DWG No  |          | REV  |                   | PAGE |      |
| 7746602-200   |          | D  |                   | 1/1  |      |