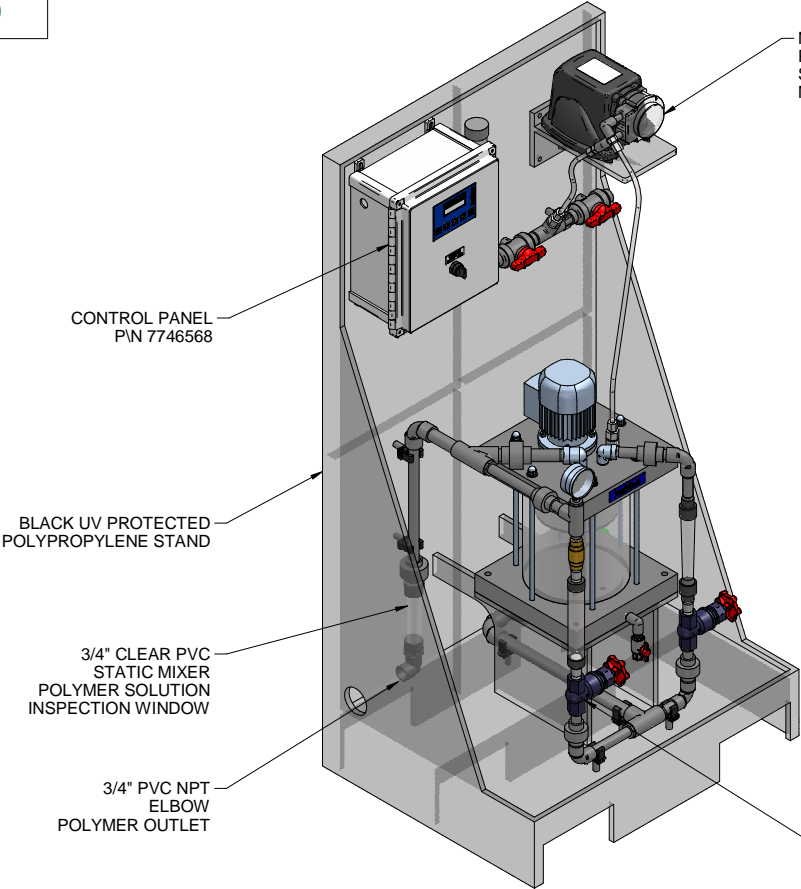
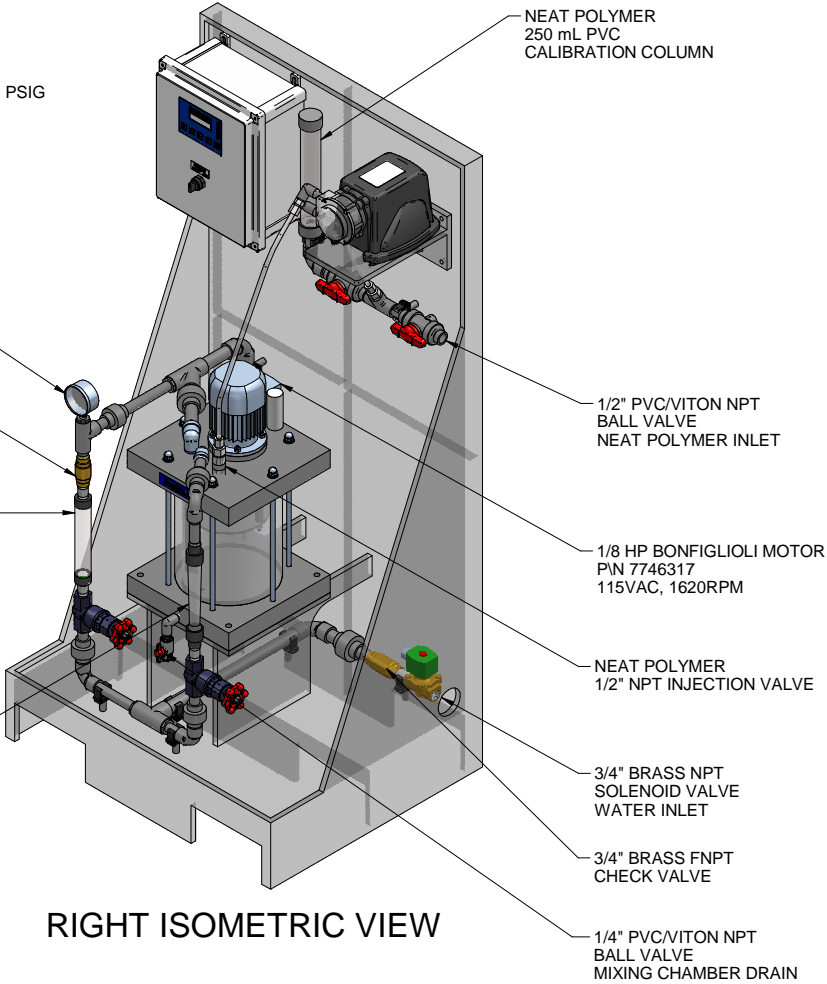


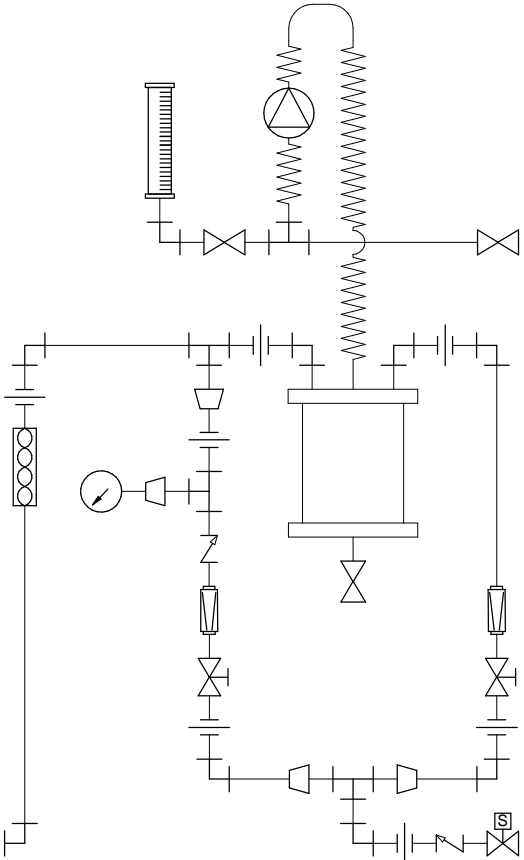
PLAN VIEW



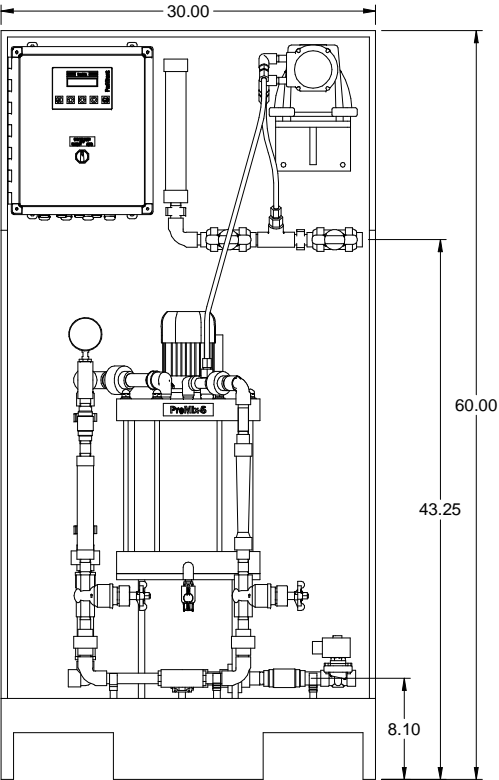
LEFT ISOMETRIC VIEW



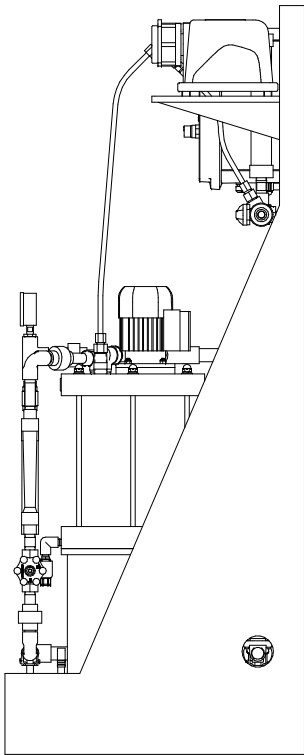
RIGHT ISOMETRIC VIEW



PIPING SCHEMATIC




FRONT VIEW



SIDE VIEW

- NOTES:
- ALL PIPING AND FITTINGS SHALL BE 1/2" AND 3/4" SCH. 80 PVC SOCKET WELD WITH VITON SEALS AS REQUIRED BY COMPONENTS.
  - EMULSION POLYMER BLENDING SYSTEM WITH THREE ZONE PVC MIXING CHAMBER.
  - REQUIRED INCOMING POWER:  
120VAC, 60HZ, 1 PHASE, 20 AMP CURRENT RATING AT 120 VAC
  - ALL DIMENSIONS ARE IN INCHES AND ARE SHOWN FOR REFERENCE ONLY.

MAXIMUM TESTING PRESSURE =	150 PSI
MAXIMUM OPERATING PRESSURE =	100 PSI
CHEMICAL SERVICE =	POLYMER

D	04/19/11	CHANGED PUMP TUBING TO TYGOTHANE	GJS		
C	12/15/10	CHANGED 1/2" TUBING TO 3/8" TUBING	GJS		
REV	DATE	DESCRIPTION	BY	APPD	REVD
REVISIONS					
CUSTOMER <b>PROMINENT FLUID CONTROLS INC. (PROMIX S SYSTEM)</b>					
JOB No		7746603	PURCHASE ORDER No <b>N/A</b>		
TITLE <b>PROMIX S_60X2-0.71TA SYSTEM SKID GENERAL ARRANGEMENT</b>					
THIS DRAWING IS THE PROPERTY OF PROMINENT FLUID CONTROLS INC. AND SHALL NOT BE COPIED OR TRANSFERRED WITHOUT THE WRITTEN CONSENT OF PROMINENT FLUID CONTROLS INC.					
ENGINEERS SEAL		<div><div></div><div><b>ProMinent</b><sup>®</sup> THE PROMINENT GROUP OF COMPANIES</div></div>			
		<div><div>PITTSBURGH, PA USA</div><div>WWW.PROMINENT.US</div><div><div><div>PROMINENT FLUID CONTROLS LTD. 490 SOUTHGATE DRIVE. GUELPH, ONTARIO, CANADA N1H 6J3 TEL 519 836 5692 FAX 519 836 5226</div><div><div>PROMINENT FLUID CONTROLS INC. RIDC PARK WEST 136 INDUSTRY DRIVE, PITTSBURGH P.A., USA. 15275 TEL 412 787 2484 FAX 412 787 0704</div></div></div><div><div>DESIGNED <b>GJS</b></div><div>DRAWN <b>GJS</b></div><div>CHECKED <b>JMS</b></div></div><div><div>APPROVED</div><div>SCALE <b>N.T.S.</b></div><div>DATE <b>07/26/10</b></div></div></div></div>			
DWG No			REV	PAGE	
7746603-200			D	1/1	