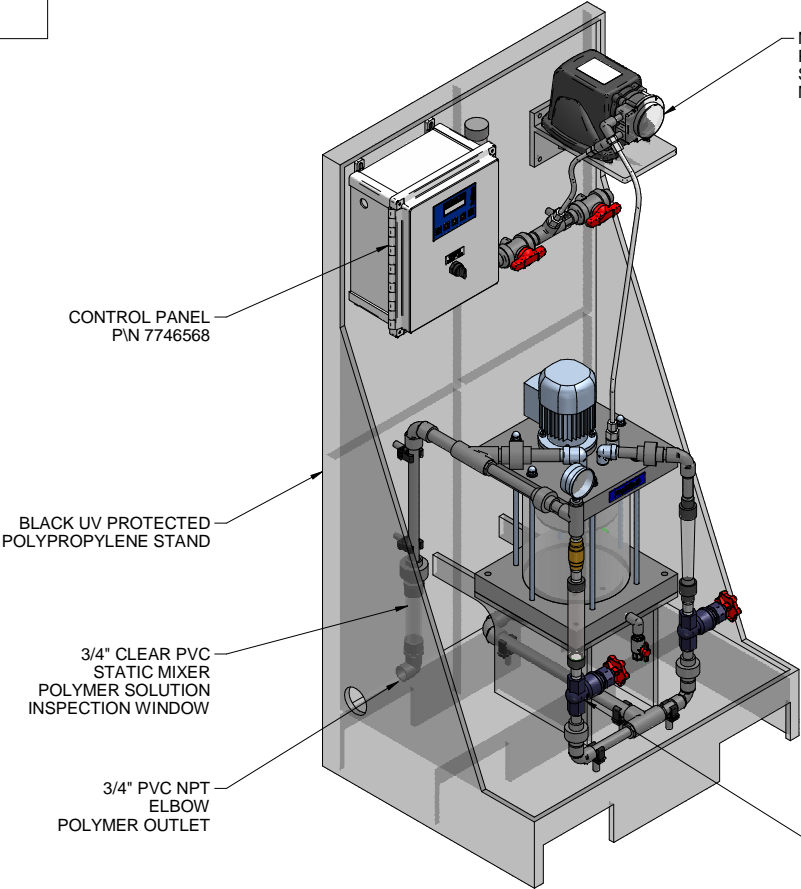
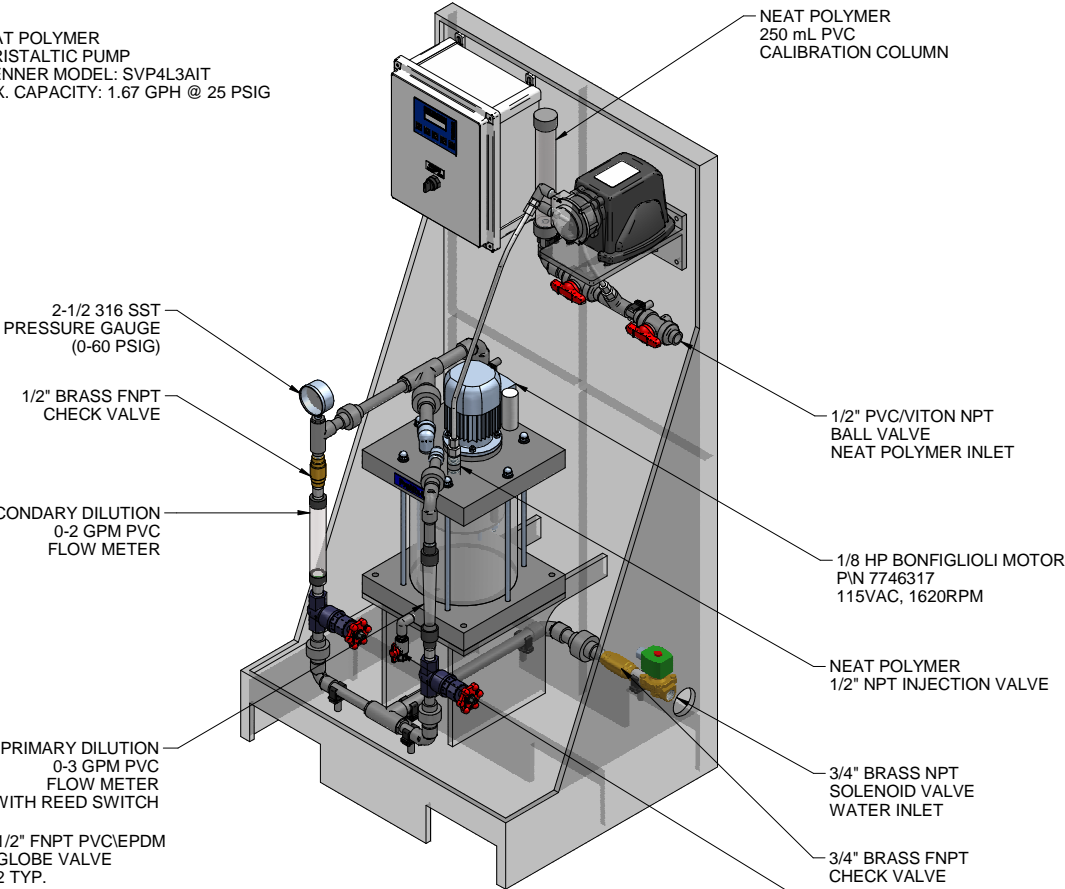


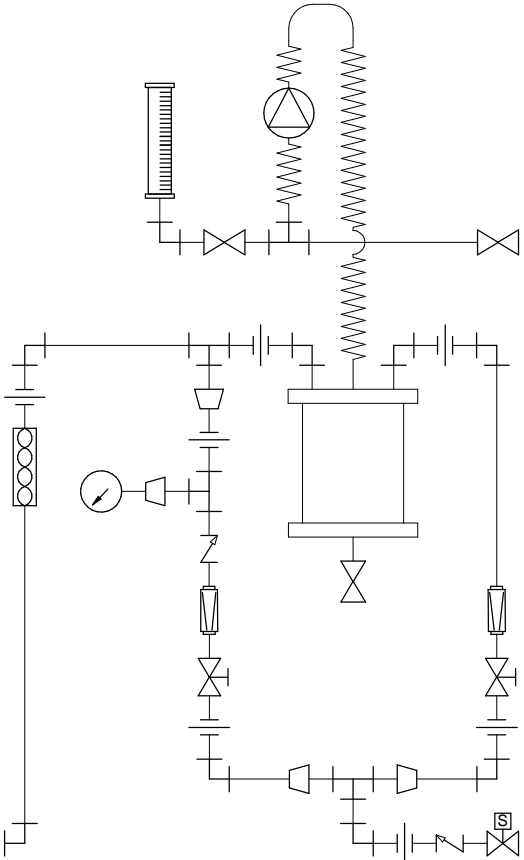
PLAN VIEW



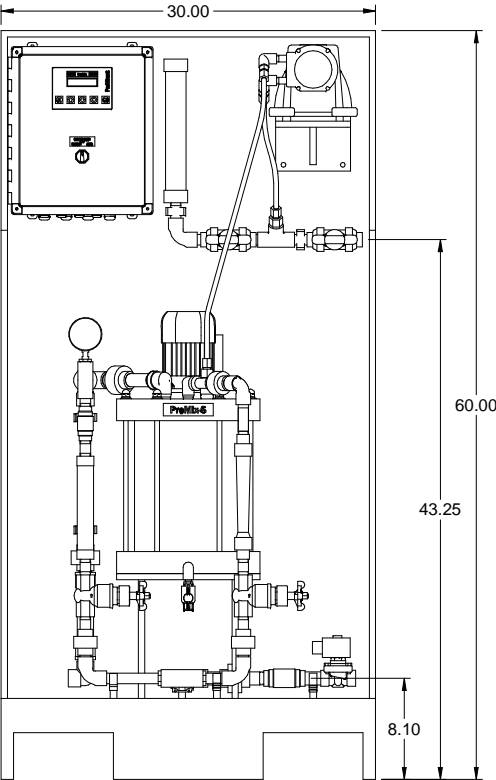
LEFT ISOMETRIC VIEW



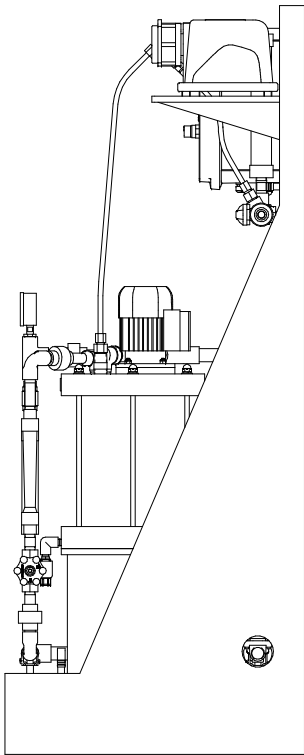
RIGHT ISOMETRIC VIEW



PIPING SCHEMATIC



FRONT VIEW



SIDE VIEW

- NOTES:
- ALL PIPING AND FITTINGS SHALL BE 1/2" AND 3/4" SCH. 80 PVC SOCKET WELD WITH VITON SEALS AS REQUIRED BY COMPONENTS.
 - EMULSION POLYMER BLENDING SYSTEM WITH THREE ZONE PVC MIXING CHAMBER.
 - REQUIRED INCOMING POWER:
120VAC, 60HZ, 1 PHASE, 20 AMP CURRENT RATING AT 120 VAC
 - ALL DIMENSIONS ARE IN INCHES AND ARE SHOWN FOR REFERENCE ONLY.

| | | | | | | | | | | | | | | | | | |
|---|--|------------------------------------|-----------------------|-------------|------|----------|-----|----------|--|-------|-----|-------|--------|---------|-----|------|----------|
| E | 11/18/11 | CHANGED PUMP & PRESSURE GAUGE | GJS | | | | | | | | | | | | | | |
| D | 04/19/11 | CHANGED PUMP TUBING TO TYGOTHANE | GJS | | | | | | | | | | | | | | |
| C | 12/15/10 | CHANGED 1/2" TUBING TO 3/8" TUBING | GJS | | | | | | | | | | | | | | |
| REV | DATE | DESCRIPTION | BY | APPD | REVD | | | | | | | | | | | | |
| REVISIONS | | | | | | | | | | | | | | | | | |
| CUSTOMER | PROMINENT FLUID CONTROLS INC. (PROMIX S SYSTEM) | | | | | | | | | | | | | | | | |
| JOB No | 7746605 | | PURCHASE ORDER No N/A | | | | | | | | | | | | | | |
| TITLE | PROMIX S_180X2-1.67TA SYSTEM SKID GENERAL ARRANGEMENT | | | | | | | | | | | | | | | | |
| THIS DRAWING IS THE PROPERTY OF PROMINENT FLUID CONTROLS INC. AND SHALL NOT BE COPIED OR TRANSFERRED WITHOUT THE WRITTEN CONSENT OF PROMINENT FLUID CONTROLS INC. | | | | | | | | | | | | | | | | | |
| ENGINEERS SEAL | <div><div><div><div></div><div>pfc</div><div>ProMinent</div></div><div><div>ProMinent®</div><div>THE PROMINENT GROUP OF COMPANIES</div></div></div><div><div>PITTSBURGH, PA USA</div><div>WWW.PROMINENT.US</div><div><div>PROMINENT FLUID CONTROLS LTD. 490 SOUTHGATE DRIVE. GUELPH, ONTARIO, CANADA N1H 6J3 TEL. 519 836 5692 FAX. 519 836 5226</div><div><div>PROMINENT FLUID CONTROLS INC. RIDC PARK WEST 136 INDUSTRY DRIVE, PITTSBURGH P.A., USA. 15275 TEL. 412 787 2484 FAX. 412 787 0704</div></div></div><table><tr><td>DESIGNED</td><td>GJS</td><td>APPROVED</td><td></td></tr><tr><td>DRAWN</td><td>GJS</td><td>SCALE</td><td>N.T.S.</td></tr><tr><td>CHECKED</td><td>JMS</td><td>DATE</td><td>07/26/10</td></tr></table></div></div> | | | | | DESIGNED | GJS | APPROVED | | DRAWN | GJS | SCALE | N.T.S. | CHECKED | JMS | DATE | 07/26/10 |
| DESIGNED | GJS | APPROVED | | | | | | | | | | | | | | | |
| DRAWN | GJS | SCALE | N.T.S. | | | | | | | | | | | | | | |
| CHECKED | JMS | DATE | 07/26/10 | | | | | | | | | | | | | | |
| DWG No | 7746605-200 | | REV E | PAGE 1/1 | | | | | | | | | | | | | |