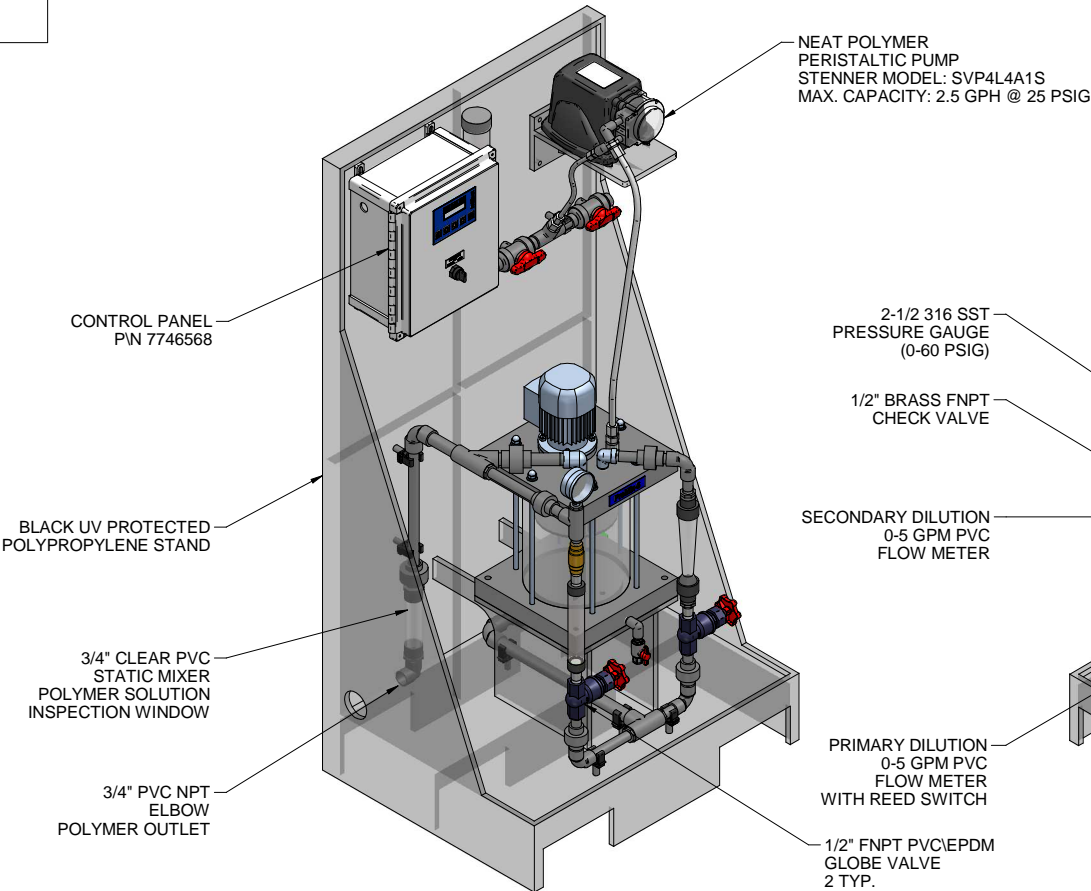
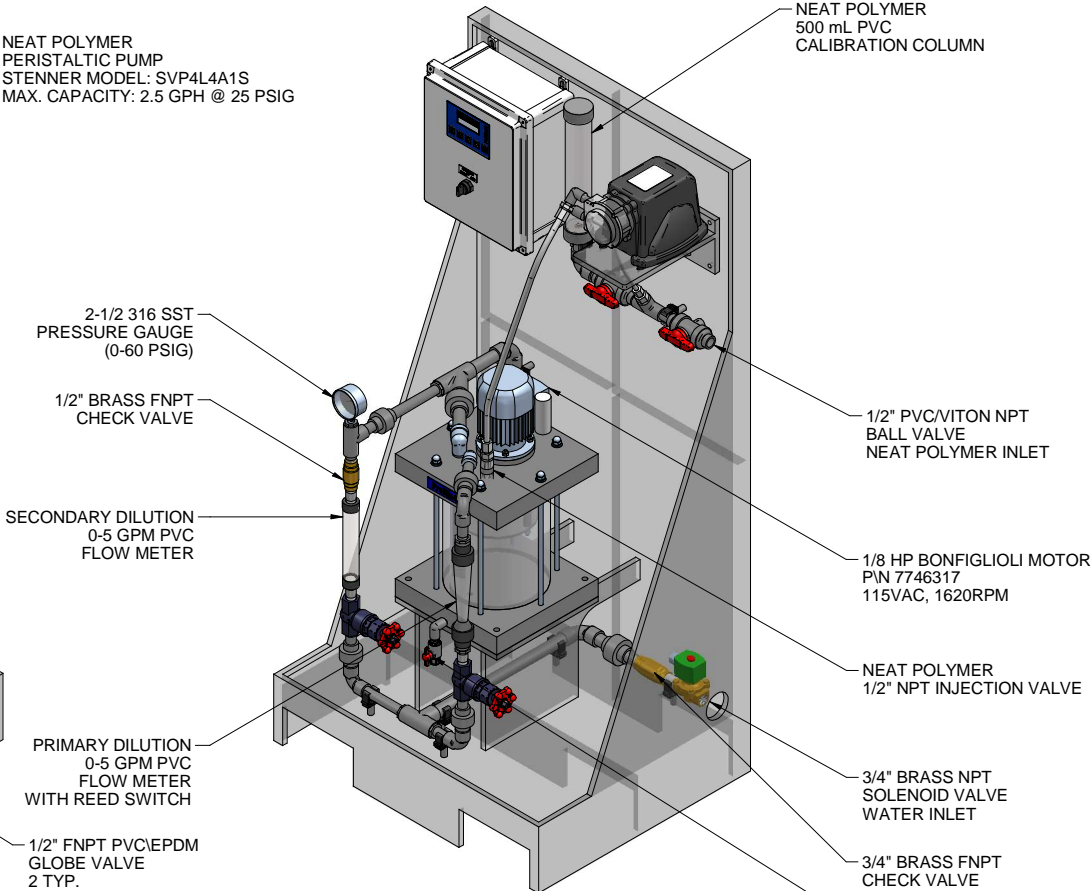


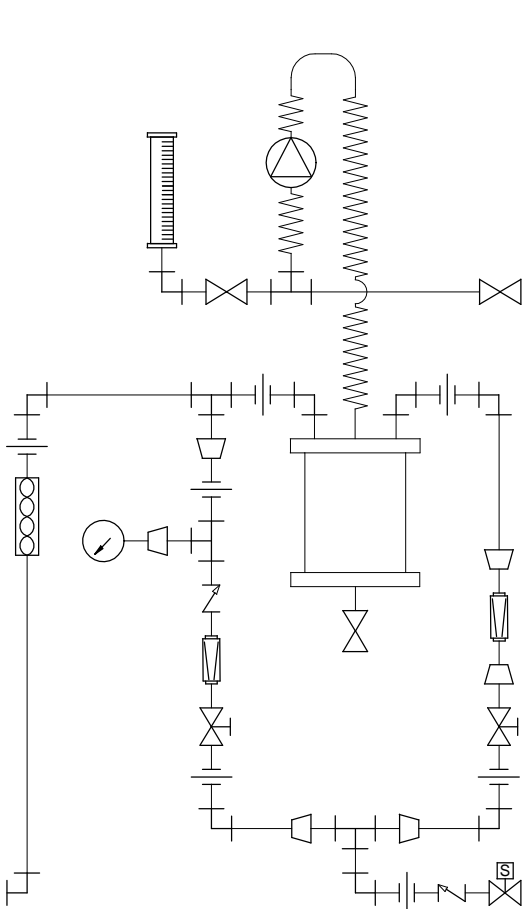
PLAN VIEW



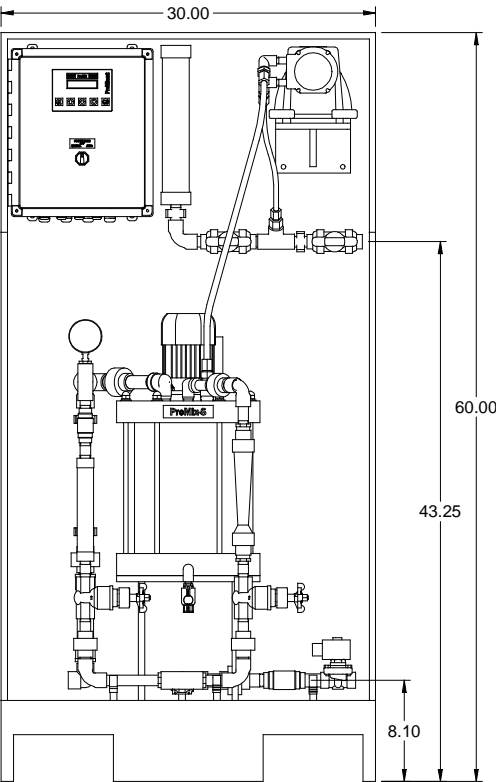
LEFT ISOMETRIC VIEW



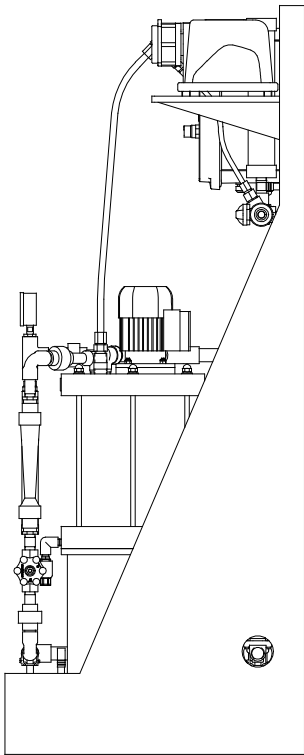
RIGHT ISOMETRIC VIEW



PIPING SCHEMATIC




FRONT VIEW



SIDE VIEW

- NOTES:
- ALL PIPING AND FITTINGS SHALL BE 1/2" AND 3/4" SCH. 80 PVC SOCKET WELD WITH VITON SEALS AS REQUIRED BY COMPONENTS.
  - EMULSION POLYMER BLENDING SYSTEM WITH THREE ZONE PVC MIXING CHAMBER.
  - REQUIRED INCOMING POWER:  
120VAC, 60HZ, 1 PHASE, 20 AMP CURRENT RATING AT 120 VAC
  - ALL DIMENSIONS ARE IN INCHES AND ARE SHOWN FOR REFERENCE ONLY.

MAXIMUM TESTING PRESSURE =	150 PSI
MAXIMUM OPERATING PRESSURE =	25 PSI
CHEMICAL SERVICE =	POLYMER

B	11/04/10	DELETED COMPONENTS		GJS		
A	10/22/10	REVISED POLYMER INLET		GJS		
0	07/26/10	FIRST ISSUE		GJS		
REV	DATE	DESCRIPTION		BY	APPD	REVD
REVISIONS						
CUSTOMER <b>PROMINENT FLUID CONTROLS INC. (PROMIX S SYSTEM)</b>						
JOB No		7746606		PURCHASE ORDER No		N/A
TITLE <b>PROMIX S_300X2-2.50TA SYSTEM SKID GENERAL ARRANGEMENT</b>						
THIS DRAWING IS THE PROPERTY OF PROMINENT FLUID CONTROLS INC. AND SHALL NOT BE COPIED OR TRANSFERRED WITHOUT THE WRITTEN CONSENT OF PROMINENT FLUID CONTROLS INC.						
ENGINEERS SEAL		<div><div></div><div><div>ProMinent®</div><div>THE PROMINENT GROUP OF COMPANIES</div></div></div> <div><div>PITTSBURGH, PA USA</div><div>WWW.PROMINENT.US</div></div> <div><div>PROMINENT FLUID CONTROLS LTD. 490 SOUTHGATE DRIVE. GUELPH, ONTARIO, CANADA N1H 6J3 TEL 519 836 5692 FAX 519 836 5226</div><div>PROMINENT FLUID CONTROLS INC. RIDC PARK WEST 136 INDUSTRY DRIVE, PITTSBURGH P.A., USA. 15275 TEL 412 787 2484 FAX 412 787 0704</div></div> <div><div>DESIGNED</div><div>GJS</div><div>APPROVED</div></div> <div><div>DRAWN</div><div>GJS</div><div>SCALE</div><div>N.T.S.</div></div> <div><div>CHECKED</div><div>JMS</div><div>DATE</div><div>07/26/10</div></div>				
DWG No		REV		PAGE		
7746606-200		B		1/1		