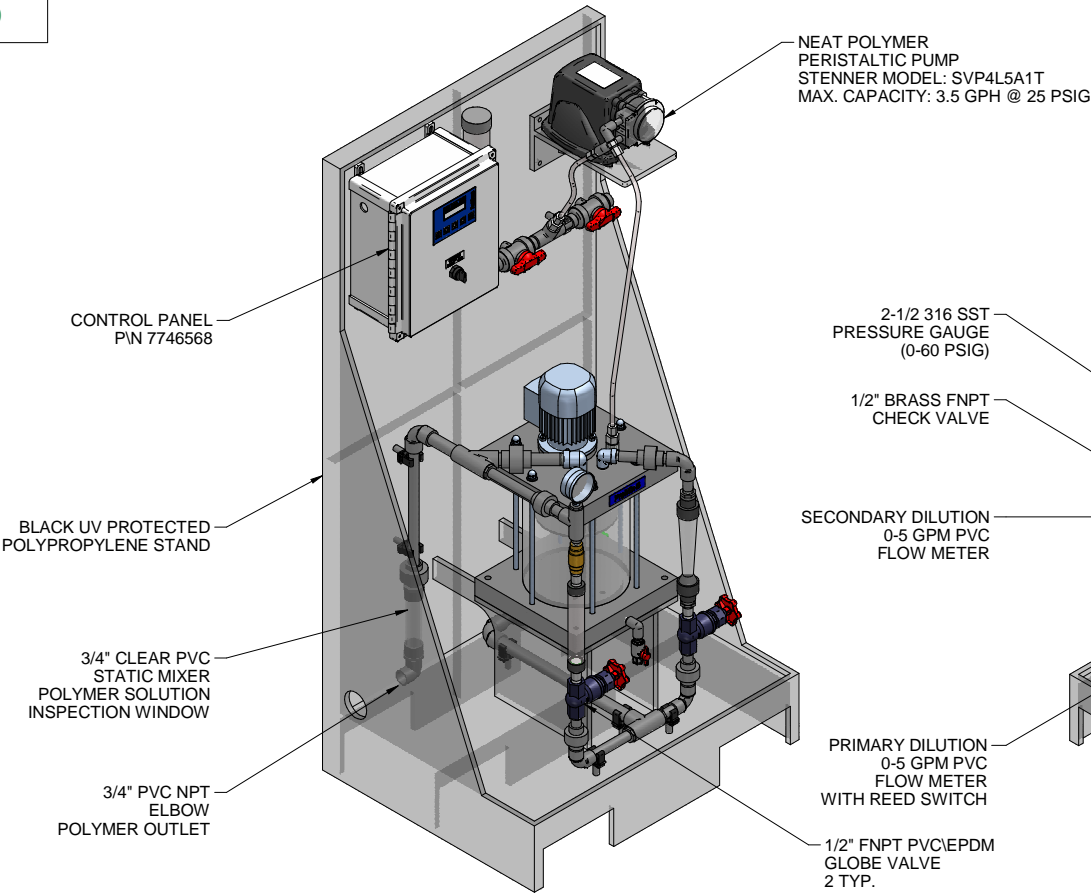
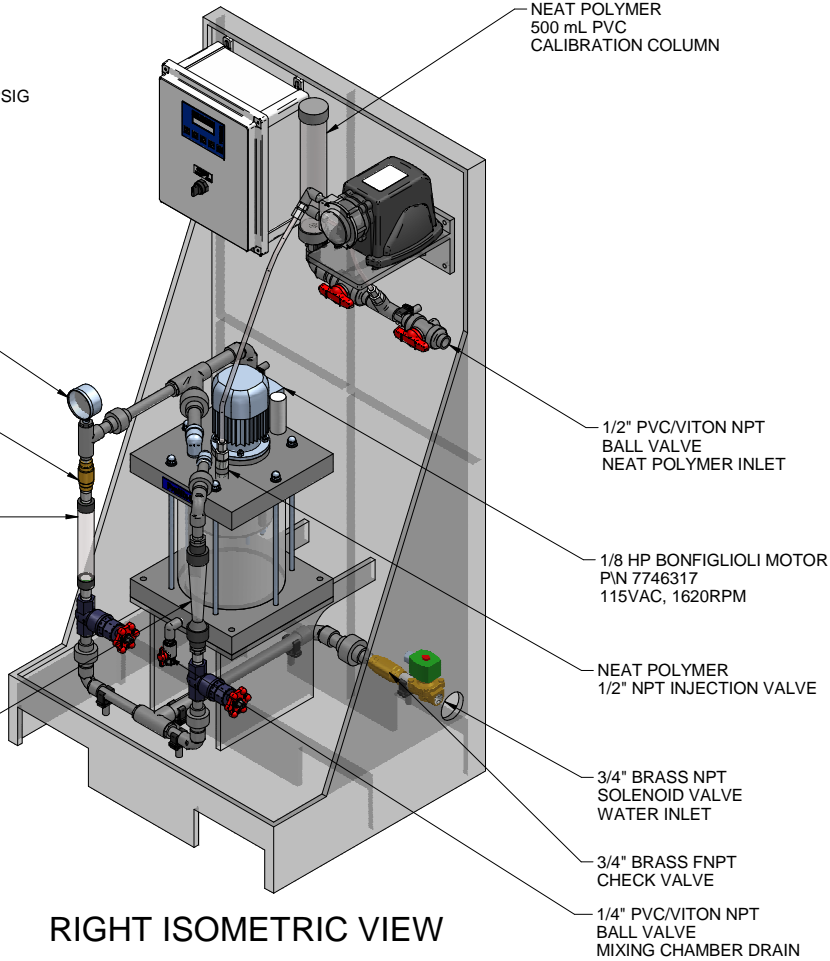


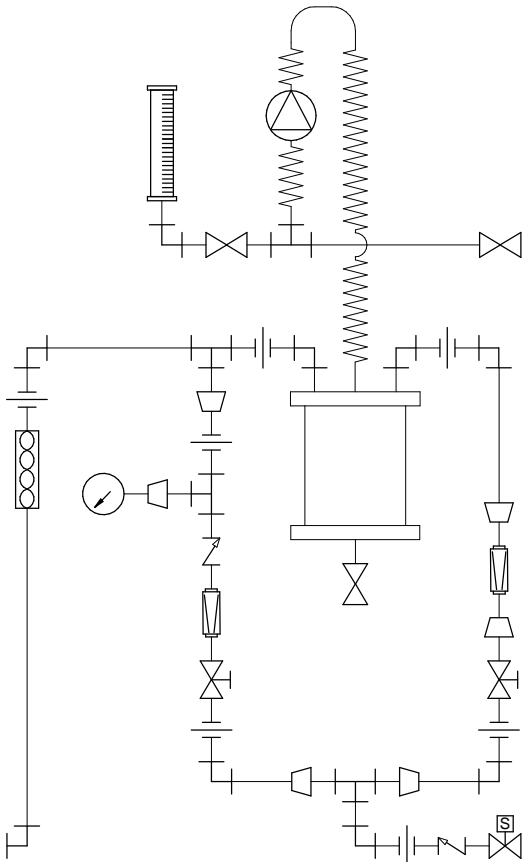
PLAN VIEW



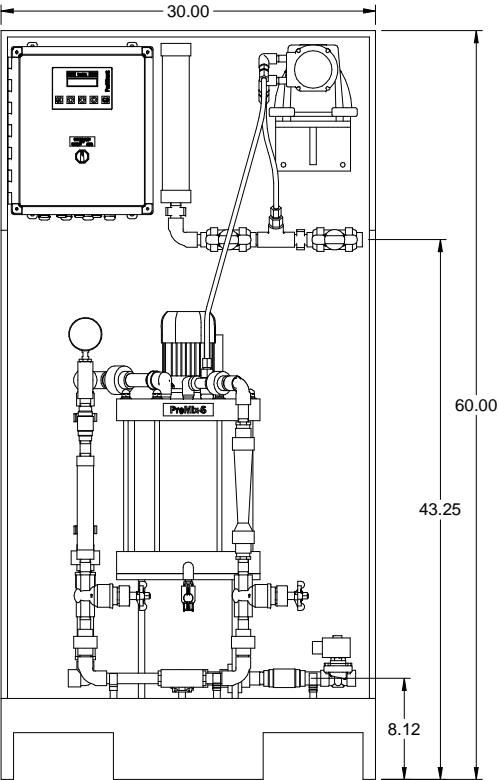
LEFT ISOMETRIC VIEW



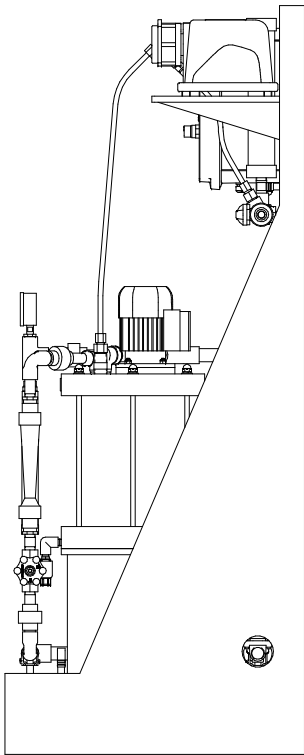
RIGHT ISOMETRIC VIEW



PIPING SCHEMATIC




FRONT VIEW



SIDE VIEW

- NOTES:
- ALL PIPING AND FITTINGS SHALL BE 1/2" AND 3/4" SCH. 80 PVC SOCKET WELD WITH VITON SEALS AS REQUIRED BY COMPONENTS.
 - EMULSION POLYMER BLENDING SYSTEM WITH THREE ZONE PVC MIXING CHAMBER.
 - REQUIRED INCOMING POWER:
120VAC, 60HZ, 1 PHASE, 20 AMP CURRENT RATING AT 120 VAC
 - ALL DIMENSIONS ARE IN INCHES AND ARE SHOWN FOR REFERENCE ONLY.

MAXIMUM TESTING PRESSURE =	150 PSI
MAXIMUM OPERATING PRESSURE =	25 PSI
CHEMICAL SERVICE =	POLYMER

D	04/19/11	CHANGED PUMP TUBING TO TYGOTHANE	GJS		
C	12/15/10	CHANGED 1/2" TUBING TO 3/8" TUBING	GJS		
REV	DATE	DESCRIPTION	BY	APPD	REVD
REVISIONS					
CUSTOMER PROMINENT FLUID CONTROLS INC. (PROMIX S SYSTEM)					
JOB No 7746607		PURCHASE ORDER No N/A			
TITLE PROMIX S_300X2-3.54TA SYSTEM SKID GENERAL ARRANGEMENT					
THIS DRAWING IS THE PROPERTY OF PROMINENT FLUID CONTROLS INC. AND SHALL NOT BE COPIED OR TRANSFERRED WITHOUT THE WRITTEN CONSENT OF PROMINENT FLUID CONTROLS INC.					
ENGINEERS SEAL		<div><div></div><div>ProMinent[®] <u>THE PROMINENT GROUP OF COMPANIES</u></div></div>			
		<div><div>PITTSBURGH, PA USA</div><div>WWW.PROMINENT.US</div><div><div><div>PROMINENT FLUID CONTROLS LTD. 490 SOUTHGATE DRIVE. GUELPH, ONTARIO, CANADA N1H 6J3 TEL 519 836 5692 FAX 519 836 5226</div><div><div>PROMINENT FLUID CONTROLS INC. RIDC PARK WEST 136 INDUSTRY DRIVE, PITTSBURGH P.A., USA. 15275 TEL 412 787 2484 FAX 412 787 0704</div></div></div><div><div>DESIGNED GJS</div><div>APPROVED</div><div>DRAWN GJS</div><div>SCALE N.T.S.</div><div>CHECKED JMS</div><div>DATE 07/26/10</div></div></div></div>			
DWG No 7746607-200			REV D		PAGE 1/1