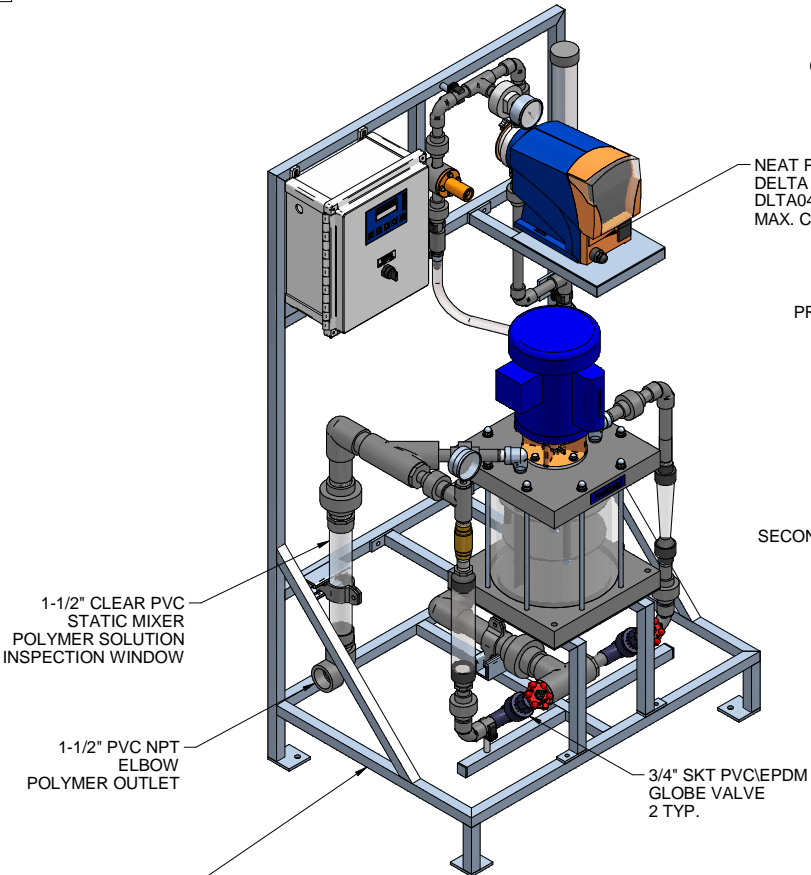
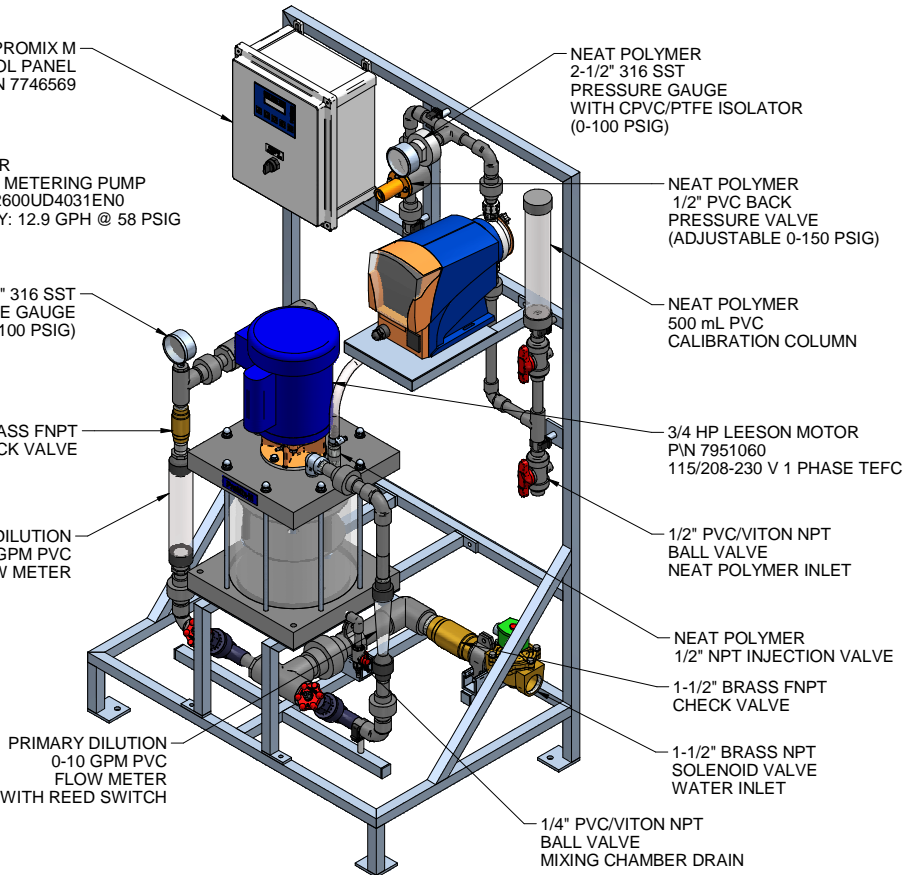


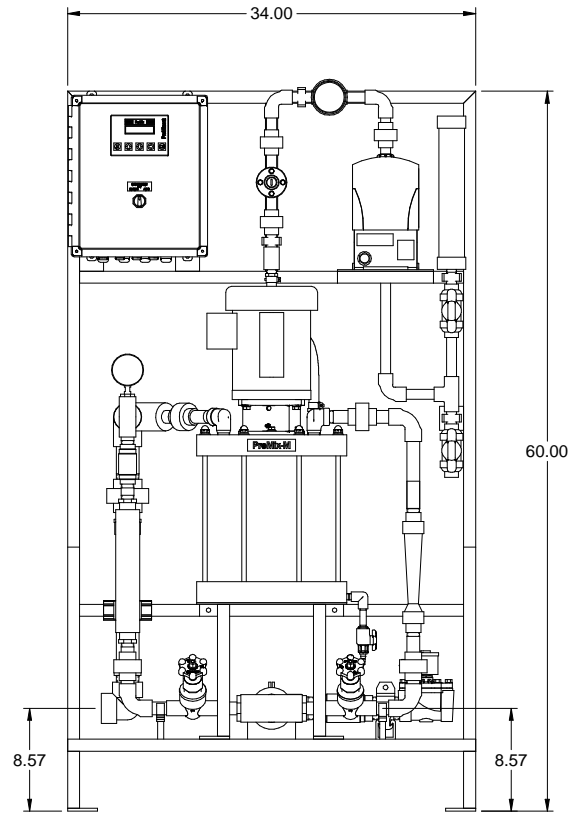
PLAN VIEW



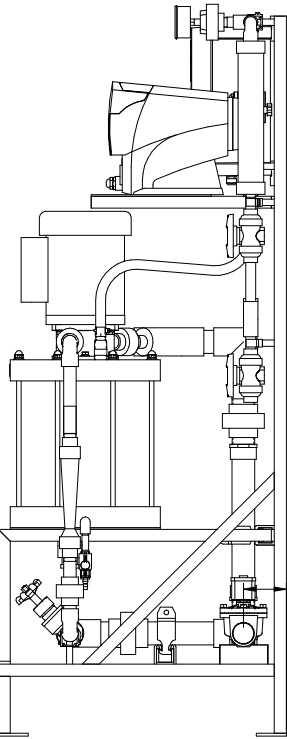
LEFT ISOMETRIC VIEW



RIGHT ISOMETRIC VIEW



FRONT VIEW



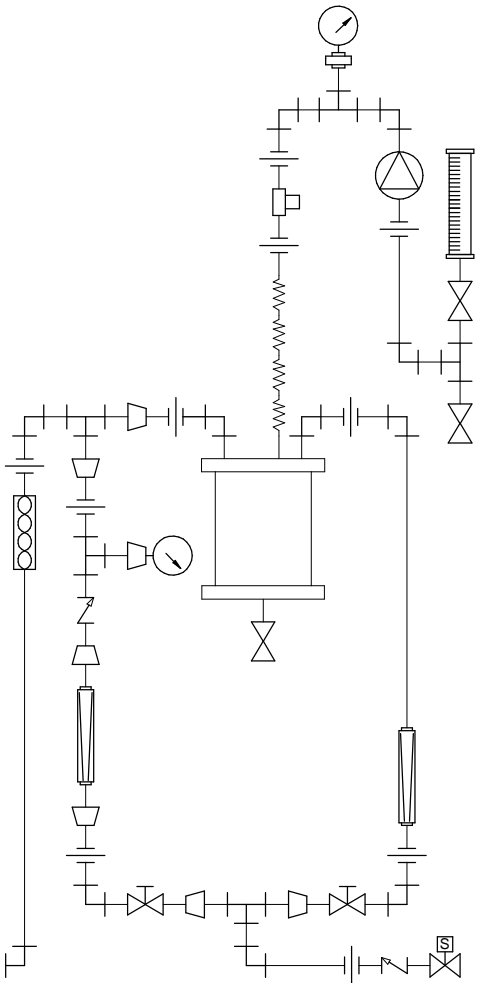
SIDE VIEW

3.57 2 PLACES TYP.
WATER INLET AND
POLYMER OUTLET

NOTES:

- ALL PIPING AND FITTINGS SHALL BE 1/2", 3/4" AND 1-1/2" SCH. 80 PVC SOCKET WELD WITH VITON SEALS AS REQUIRED BY COMPONENTS.
- PUMP MAXIMUM CAPACITY RATES BASED ON PUMPING WATER. THE PUMP MAXIMUM CAPACITY PUMPING POLYMER IS 10.0 GPH @ 58 PSIG.
- EMULSION POLYMER BLENDING SYSTEM WITH THREE ZONE PVC MIXING CHAMBER.
- REQUIRED INCOMING POWER:

120VAC, 60HZ, 1 PHASE, 20 AMP CURRENT RATING AT 120 VAC
- ALL DIMENSIONS ARE IN INCHES AND ARE SHOWN FOR REFERENCE ONLY.



PIPING SCHEMATIC

A	01/26/11	REMOVED SELF FILL OPTION		GJS	
0	09/24/10	FIRST ISSUE		GJS	
REV	DATE	DESCRIPTION		BY	APPD/REV
REVISIONS					
CUSTOMER PROMINENT FLUID CONTROLS INC. (PROMIX M SYSTEM)					
JOB No 7746638		PURCHASE ORDER No N/A			
TITLE PROMIX M_0-600X2-10.0DA SYSTEM SKID GENERAL ARRANGEMENT					
THIS DRAWING IS THE PROPERTY OF PROMINENT FLUID CONTROLS INC. AND SHALL NOT BE COPIED OR TRANSFERRED WITHOUT THE WRITTEN CONSENT OF PROMINENT FLUID CONTROLS INC.					
ENGINEERS SEAL		<div><div><div><div></div><div>pfc</div><div>ProMinent</div></div></div><div><div>ProMinent®</div><div>THE PROMINENT GROUP OF COMPANIES</div></div></div>			
		<div><div>PITTSBURGH, PA USAWWW.PROMINENT.US</div><div><div>PROMINENT FLUID CONTROLS LTD. 490 SOUTHGATE DRIVE. GUELPH, ONTARIO, CANADA N1H 6J3 TEL 519 836 5692 FAX 519 836 5226</div><div>PROMINENT FLUID CONTROLS INC. RIDC PARK WEST 136 INDUSTRY DRIVE, PITTSBURGH P.A., USA. 15275 TEL 412 787 2484 FAX 412 787 0704</div></div><div><div>DESIGNED GJSAPPROVED</div><div>DRAWN GJSCALE N.T.S.</div><div>CHECKED JMSDATE 09/24/10</div></div></div>			
DWG No 7746638-200				REV A	PAGE 1/1