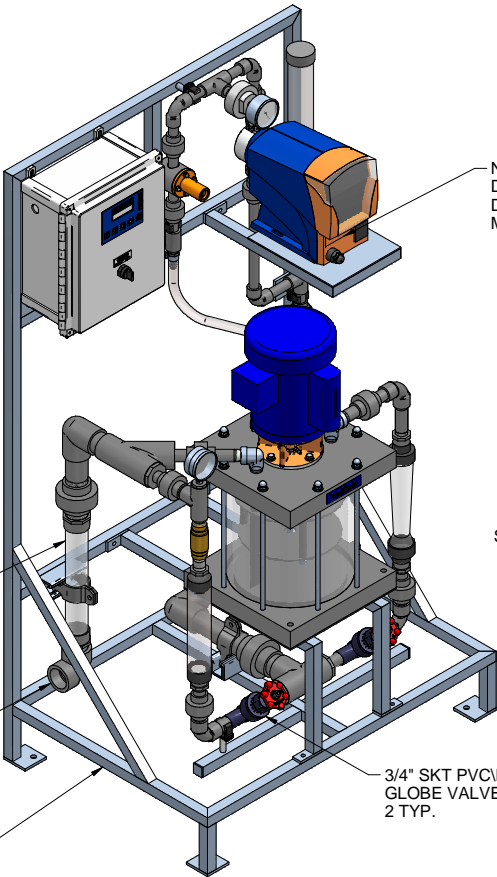


PLAN VIEW

1-1/2" CLEAR PVC  
STATIC MIXER  
POLYMER SOLUTION  
INSPECTION WINDOW

1-1/2" PVC NPT  
ELBOW  
POLYMER OUTLET

304 SST FRAME WELDED  
1" STRUCTURAL TUBING



LEFT ISOMETRIC VIEW

NEAT POLYMER  
DELTA SERIES METERING PUMP  
DLTA0730PVT4600UD4031EN0  
MAX. CAPACITY: 7.7 GPH @ 102 PSIG

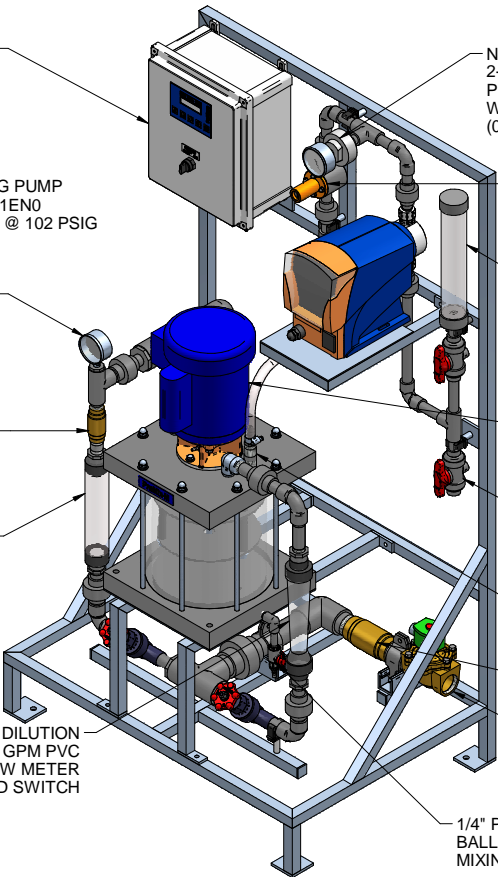
2-1/2" 316 SST  
PRESSURE GAUGE  
(0-160 PSIG)

3/4" BRASS FNPT  
CHECK VALVE

SECONDARY DILUTION  
0-21 GPM PVC  
FLOW METER

3/4" SKT PVC/EPDM  
GLOBE VALVE  
2 TYP.

PRIMARY DILUTION  
0-20 GPM PVC  
FLOW METER  
WITH REED SWITCH



RIGHT ISOMETRIC VIEW

NEAT POLYMER  
2-1/2" 316 SST  
PRESSURE GAUGE  
WITH CPVC/PTFE ISOLATOR  
(0-160 PSIG)

NEAT POLYMER  
1/2" PVC BACK  
PRESSURE VALVE  
(ADJUSTABLE 0-150 PSIG)

NEAT POLYMER  
500 mL PVC  
CALIBRATION COLUMN

3/4 HP LEESON MOTOR  
P/N 7951060  
115/208-230 V 1 PHASE TEFC

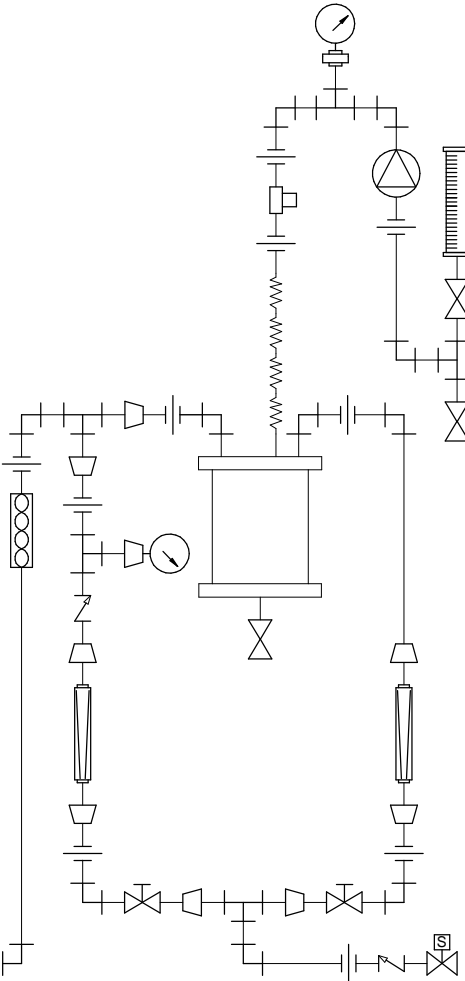
1/2" PVC/VITON NPT  
BALL VALVE  
NEAT POLYMER INLET

NEAT POLYMER  
1/2" NPT INJECTION VALVE

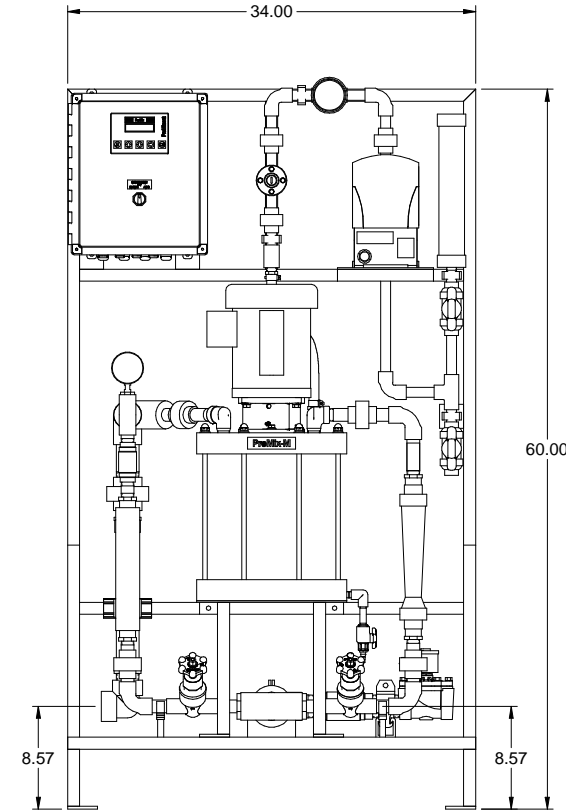
1-1/2" BRASS FNPT  
CHECK VALVE

1-1/2" BRASS NPT  
SOLENOID VALVE  
WATER INLET

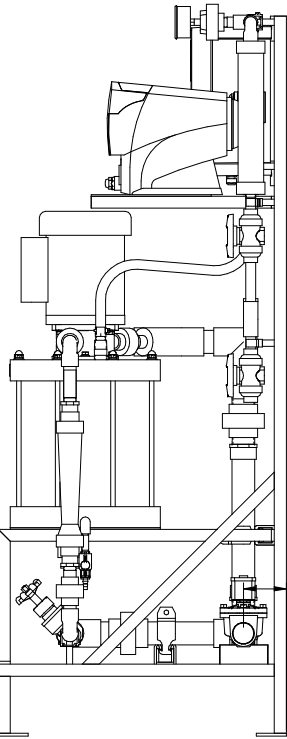
1/4" PVC/VITON NPT  
BALL VALVE  
MIXING CHAMBER DRAIN



PIPING SCHEMATIC



FRONT VIEW




SIDE VIEW

3.57 2 PLACES TYP.  
WATER INLET AND  
POLYMER OUTLET

NOTES:

- ALL PIPING AND FITTINGS SHALL BE 1/2", 3/4" AND 1-1/2" SCH. 80 PVC SOCKET WELD WITH VITON SEALS AS REQUIRED BY COMPONENTS.
- PUMP MAXIMUM CAPACITY RATES BASED ON PUMPING WATER. THE PUMP MAXIMUM CAPACITY PUMPING POLYMER IS 6.2 GPH @ 102 PSIG.
- EMULSION POLYMER BLENDING SYSTEM WITH THREE ZONE PVC MIXING CHAMBER.
- REQUIRED INCOMING POWER:  
  
120VAC, 60HZ, 1 PHASE, 20 AMP CURRENT RATING AT 120 VAC
- ALL DIMENSIONS ARE IN INCHES AND ARE SHOWN FOR REFERENCE ONLY.

MAXIMUM TESTING PRESSURE =	150 PSI
MAXIMUM OPERATING PRESSURE =	100 PSI
CHEMICAL SERVICE =	POLYMER

A	01/26/11	REMOVED SELF FILL OPTION		GJS	
0	09/24/10	FIRST ISSUE		GJS	
REV	DATE	DESCRIPTION		BY	APPD/REVD
REVISIONS					
CUSTOMER <b>PROMINENT FLUID CONTROLS INC. (PROMIX M SYSTEM)</b>					
JOB No		7746639		PURCHASE ORDER No <b>N/A</b>	
TITLE <b>PROMIX M_0-1200X2-6.2DA SYSTEM SKID GENERAL ARRANGEMENT</b>					
THIS DRAWING IS THE PROPERTY OF PROMINENT FLUID CONTROLS INC. AND SHALL NOT BE COPIED OR TRANSFERRED WITHOUT THE WRITTEN CONSENT OF PROMINENT FLUID CONTROLS INC.					
ENGINEERS SEAL		<div><div></div><div><b>ProMinent</b><sup>®</sup> THE PROMINENT GROUP OF COMPANIES</div></div>			
		PITTSBURGH, PA USA		WWW.PROMINENT.US	
		PROMINENT FLUID CONTROLS LTD. 490 SOUTHGATE DRIVE. GUELPH, ONTARIO, CANADA N1H 6J3 TEL. 519 836 5692 FAX. 519 836 5226		PROMINENT FLUID CONTROLS INC. RIDC PARK WEST 136 INDUSTRY DRIVE, PITTSBURGH P.A., USA. 15275 TEL. 412 787 2484 FAX. 412 787 0704	
		DESIGNED <b>GJS</b>		APPROVED	
		DRAWN <b>GJS</b>		SCALE <b>N.T.S.</b>	
		CHECKED <b>JMS</b>		DATE <b>09/24/10</b>	
DWG No				REV	PAGE
<b>7746639-200</b>				<b>A</b>	<b>1/1</b>