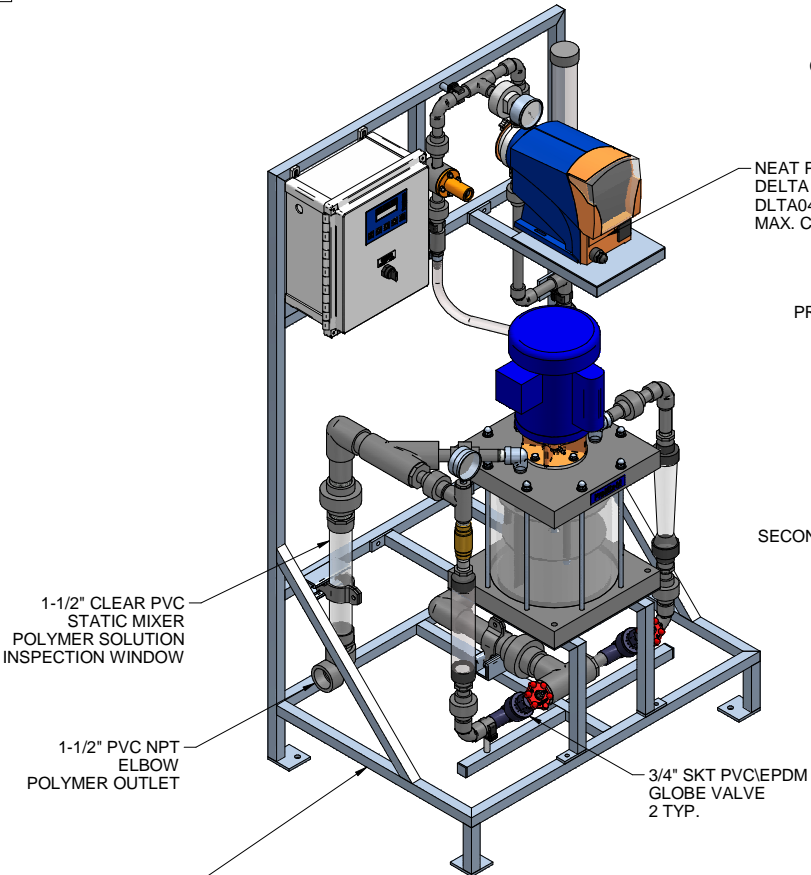
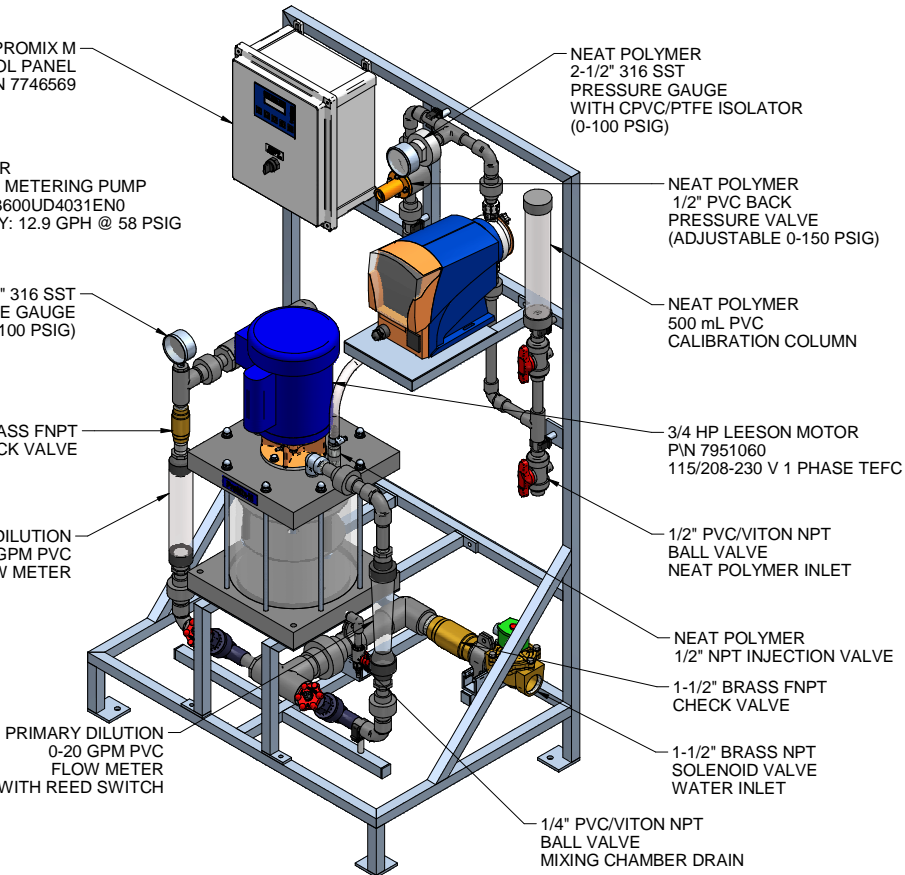


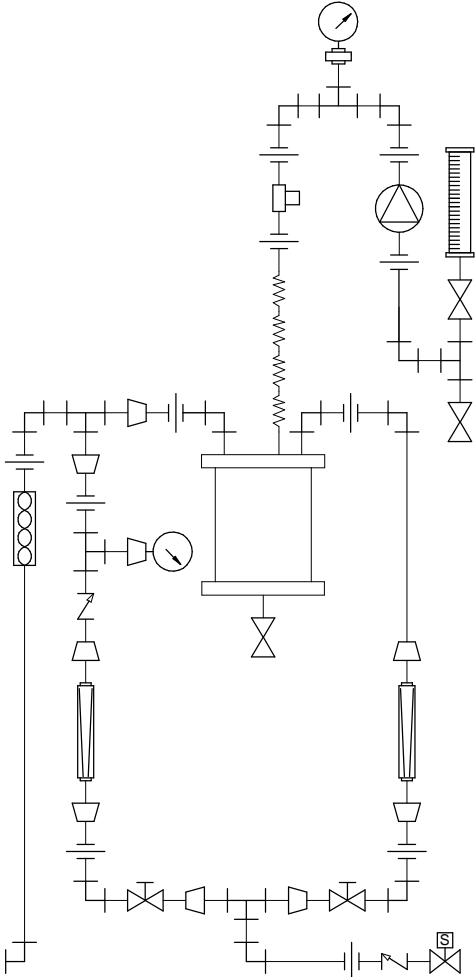
PLAN VIEW



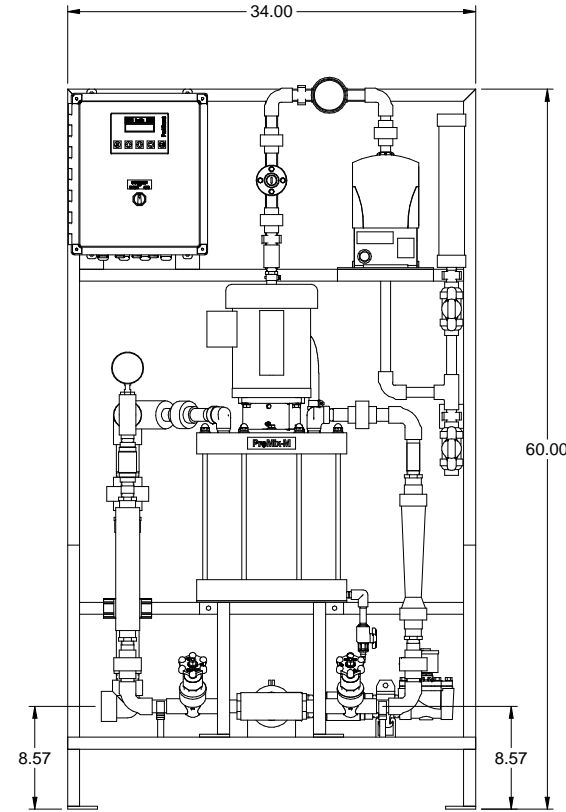
LEFT ISOMETRIC VIEW



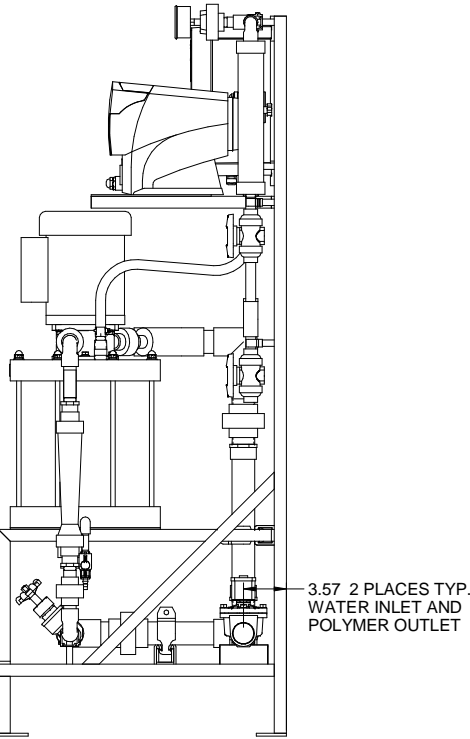
RIGHT ISOMETRIC VIEW



PIPING SCHEMATIC




FRONT VIEW



SIDE VIEW

- NOTES:
- ALL PIPING AND FITTINGS SHALL BE 1/2", 3/4" AND 1-1/2" SCH. 80 PVC SOCKET WELD WITH VITON SEALS AS REQUIRED BY COMPONENTS.
 - PUMP MAXIMUM CAPACITY RATES BASED ON PUMPING WATER. THE PUMP MAXIMUM CAPACITY PUMPING POLYMER IS 10.0 GPH @ 58 PSIG.
 - EMULSION POLYMER BLENDING SYSTEM WITH THREE ZONE PVC MIXING CHAMBER.
 - REQUIRED INCOMING POWER:
120VAC, 60HZ, 1 PHASE, 20 AMP CURRENT RATING AT 120 VAC
 - ALL DIMENSIONS ARE IN INCHES AND ARE SHOWN FOR REFERENCE ONLY.

MAXIMUM TESTING PRESSURE =	150 PSI
MAXIMUM OPERATING PRESSURE =	58 PSI
CHEMICAL SERVICE =	POLYMER

B	04/14/11	ADDED SPRING TO DELTA PUMP IDENT CODE		GJS		
A	01/26/11	REMOVED SELF FILL OPTION			GJS	
0	09/24/10	FIRST ISSUE			GJS	
REV	DATE	DESCRIPTION			BY	APPD/REV'D
REVISIONS						
CUSTOMER PROMINENT FLUID CONTROLS INC. (PROMIX M SYSTEM)						
JOB No		7746640		PURCHASE ORDER No		N/A
TITLE PROMIX M_0-1200X2-10.0DA SYSTEM SKID GENERAL ARRANGEMENT						
THIS DRAWING IS THE PROPERTY OF PROMINENT FLUID CONTROLS INC. AND SHALL NOT BE COPIED OR TRANSFERRED WITHOUT THE WRITTEN CONSENT OF PROMINENT FLUID CONTROLS INC.						
ENGINEERS SEAL		<div><div></div><div><div>ProMinent®</div><div>THE PROMINENT GROUP OF COMPANIES</div></div></div>				
		PITTSBURGH, PA USA		WWW.PROMINENT.US		
		PROMINENT FLUID CONTROLS LTD. 490 SOUTHGATE DRIVE. GUELPH, ONTARIO, CANADA N1H 6J3 TEL 519 836 5692 FAX 519 836 5226		PROMINENT FLUID CONTROLS INC. RIDC PARK WEST 136 INDUSTRY DRIVE, PITTSBURGH P.A., USA. 15275 TEL 412 787 2484 FAX 412 787 0704		
		DESIGNED GJS		APPROVED		
		DRAWN GJS		SCALE N.T.S.		
		CHECKED JMS		DATE 09/24/10		
DWG No				REV		PAGE
7746640-200				B		1/1