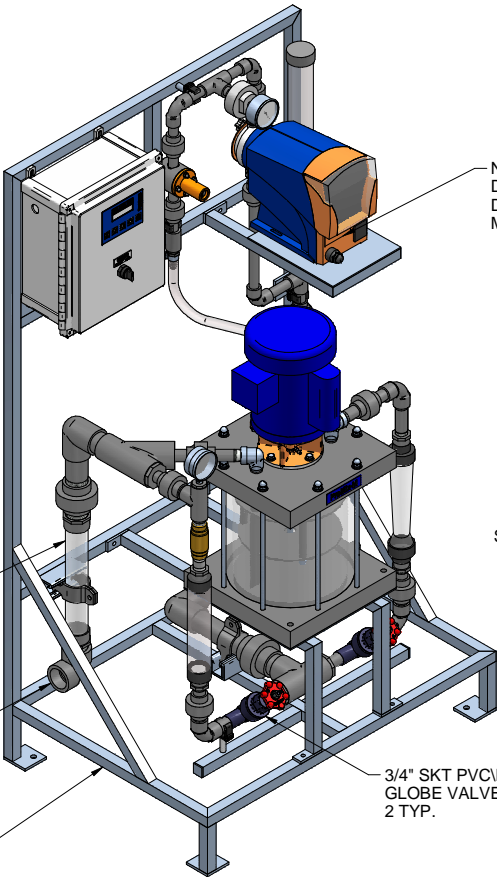


PLAN VIEW

1-1/2" CLEAR PVC
STATIC MIXER
POLYMER SOLUTION
INSPECTION WINDOW

1-1/2" PVC NPT
ELBOW
POLYMER OUTLET

304 SST FRAME WELDED
1" STRUCTURAL TUBING



LEFT ISOMETRIC VIEW

NEAT POLYMER
DELTA SERIES METERING PUMP
DLTA0450PVT3600UD4031EN0
MAX. CAPACITY: 12.9 GPH @ 58 PSIG

2-1/2" 316 SST
PRESSURE GAUGE
(0-100 PSIG)

3/4" BRASS FNPT
CHECK VALVE

SECONDARY DILUTION
0-30 GPM PVC
FLOW METER

3/4" SKT PVC/EPDM
GLOBE VALVE
2 TYP.

PRIMARY DILUTION
0-25 GPM PVC
FLOW METER
WITH REED SWITCH

PROMIX M
CONTROL PANEL
P/N 7746569

NEAT POLYMER
2-1/2" 316 SST
PRESSURE GAUGE
WITH CPVC/PTFE ISOLATOR
(0-100 PSIG)

NEAT POLYMER
1/2" PVC BACK
PRESSURE VALVE
(ADJUSTABLE 0-150 PSIG)

NEAT POLYMER
500 mL PVC
CALIBRATION COLUMN

3/4 HP LEESON MOTOR
P/N 7951060
115/208-230 V 1 PHASE TEFC

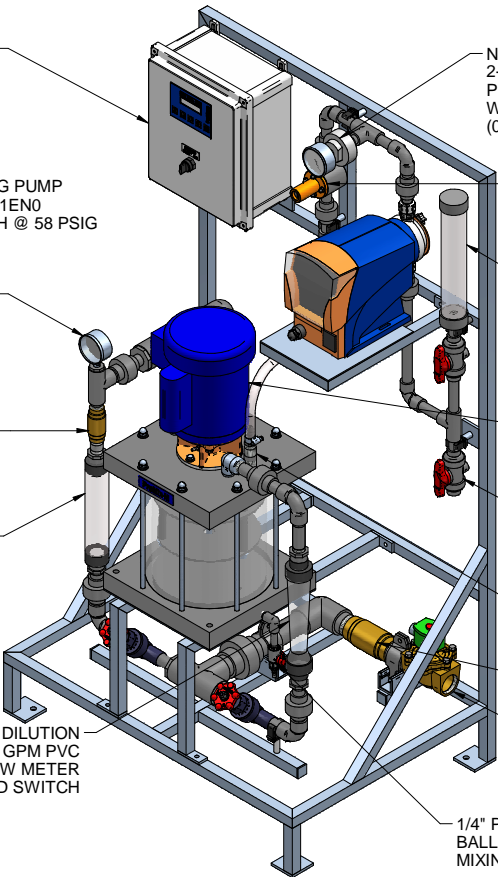
1/2" PVC/VITON NPT
BALL VALVE
NEAT POLYMER INLET

NEAT POLYMER
1/2" NPT INJECTION VALVE

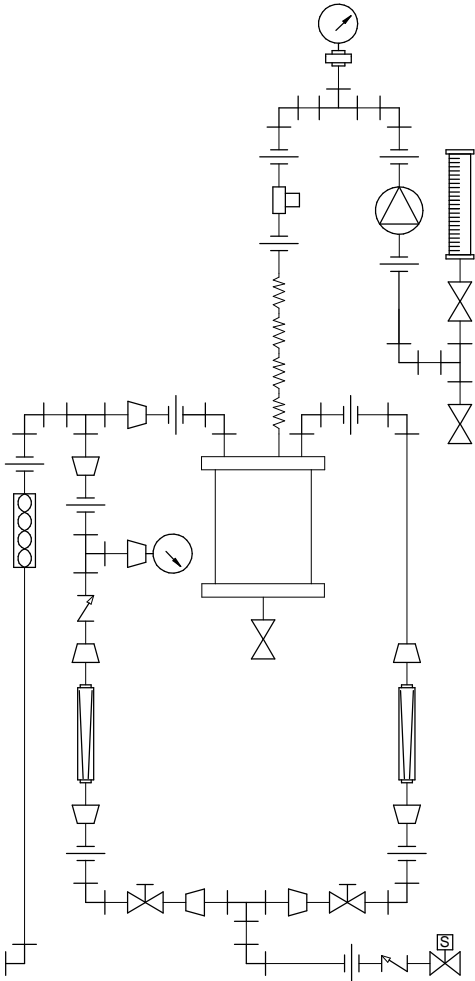
1-1/2" BRASS FNPT
CHECK VALVE

1-1/2" BRASS NPT
SOLENOID VALVE
WATER INLET

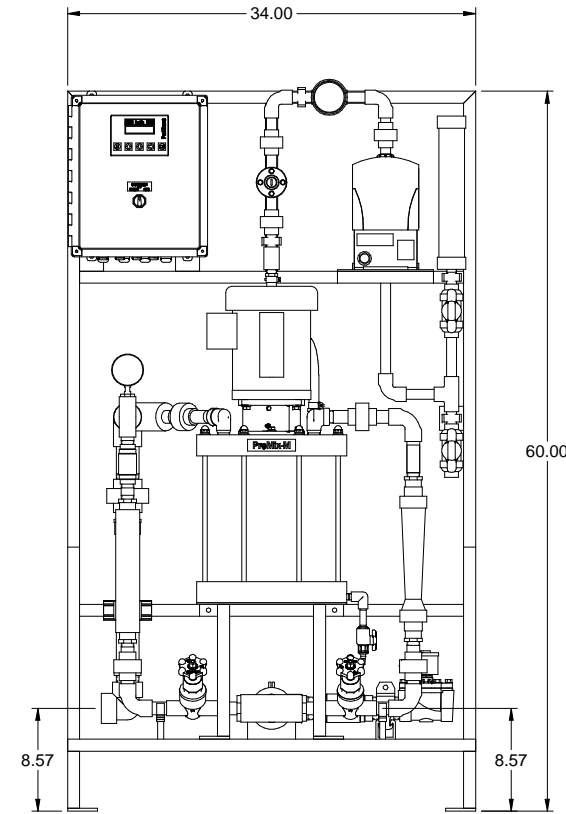
1/4" PVC/VITON NPT
BALL VALVE
MIXING CHAMBER DRAIN



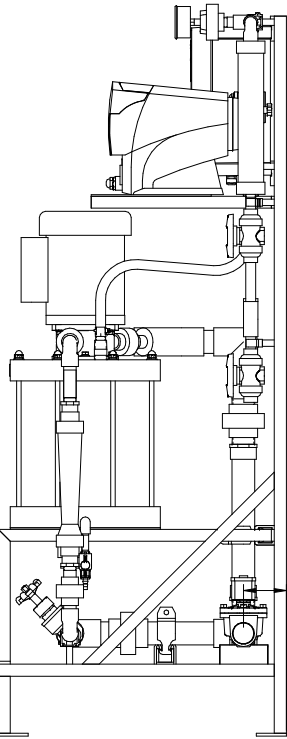
RIGHT ISOMETRIC VIEW



PIPING SCHEMATIC



FRONT VIEW




SIDE VIEW

3.57" 2 PLACES TYP.
WATER INLET AND
POLYMER OUTLET

- NOTES:
- ALL PIPING AND FITTINGS SHALL BE 1/2", 3/4" AND 1-1/2" SCH. 80 PVC SOCKET WELD WITH VITON SEALS AS REQUIRED BY COMPONENTS.
 - PUMP MAXIMUM CAPACITY RATES BASED ON PUMPING WATER. THE PUMP MAXIMUM CAPACITY PUMPING POLYMER IS 10.0 GPH @ 58 PSIG.
 - EMULSION POLYMER BLENDING SYSTEM WITH THREE ZONE PVC MIXING CHAMBER.
 - REQUIRED INCOMING POWER:

120VAC, 60HZ, 1 PHASE, 20 AMP CURRENT RATING AT 120 VAC
 - ALL DIMENSIONS ARE IN INCHES AND ARE SHOWN FOR REFERENCE ONLY.

MAXIMUM TESTING PRESSURE =	150 PSI
MAXIMUM OPERATING PRESSURE =	58 PSI
CHEMICAL SERVICE =	POLYMER

B	04/14/11	ADDED SPRING TO DELTA PUMP IDENT CODE		GJS		
A	01/26/11	REMOVED SELF FILL OPTION			GJS	
0	09/24/10	FIRST ISSUE			GJS	
REV	DATE	DESCRIPTION			BY	APPD/REV'D
REVISIONS						
CUSTOMER PROMINENT FLUID CONTROLS INC. (PROMIX M SYSTEM)						
JOB No		7746642		PURCHASE ORDER No		N/A
TITLE PROMIX M_0-1500X2-10.0DA SYSTEM SKID GENERAL ARRANGEMENT						
THIS DRAWING IS THE PROPERTY OF PROMINENT FLUID CONTROLS INC. AND SHALL NOT BE COPIED OR TRANSFERRED WITHOUT THE WRITTEN CONSENT OF PROMINENT FLUID CONTROLS INC.						
ENGINEERS SEAL		<div><div></div><div><div>ProMinent[®]</div><div>THE PROMINENT GROUP OF COMPANIES</div></div></div>				
		PITTSBURGH, PA USA		WWW.PROMINENT.US		
		PROMINENT FLUID CONTROLS LTD. 490 SOUTHGATE DRIVE. GUELPH, ONTARIO, CANADA N1H 6J3 TEL 519 836 5692 FAX 519 836 5226		PROMINENT FLUID CONTROLS INC. RIDC PARK WEST 136 INDUSTRY DRIVE, PITTSBURGH P.A., USA. 15275 TEL 412 787 2484 FAX 412 787 0704		
		DESIGNED GJS		APPROVED		
		DRAWN GJS		SCALE N.T.S.		
		CHECKED JMS		DATE 09/24/10		
DWG No				REV B		PAGE 1/1
7746642-200						