

PLAN VIEW

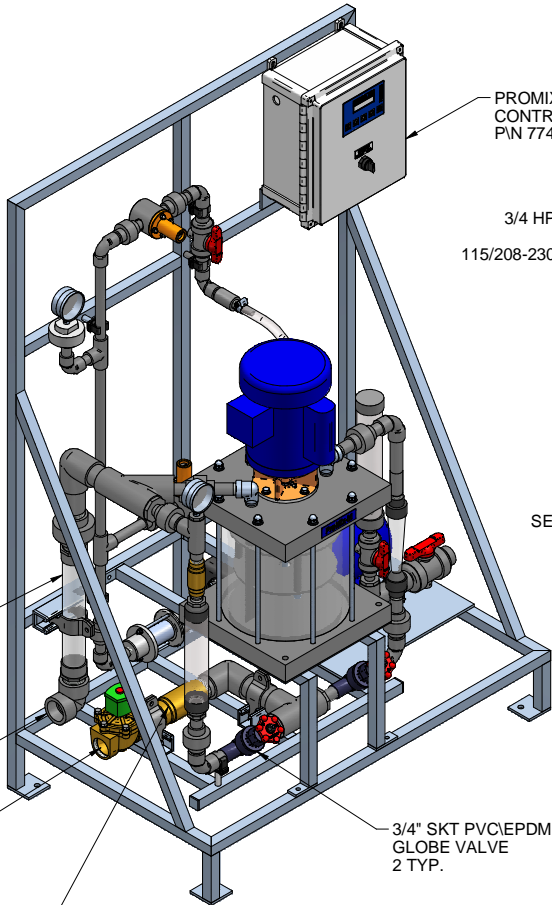
1-1/2" CLEAR PVC
STATIC MIXER
POLYMER SOLUTION
INSPECTION WINDOW

1-1/2" PVC NPT
ELBOW
POLYMER OUTLET

1-1/2" BRASS NPT
120V NORMALLY CLOSED
SOLENOID VALVE
WATER INLET

1-1/2" BRASS FNPT
CHECK VALVE

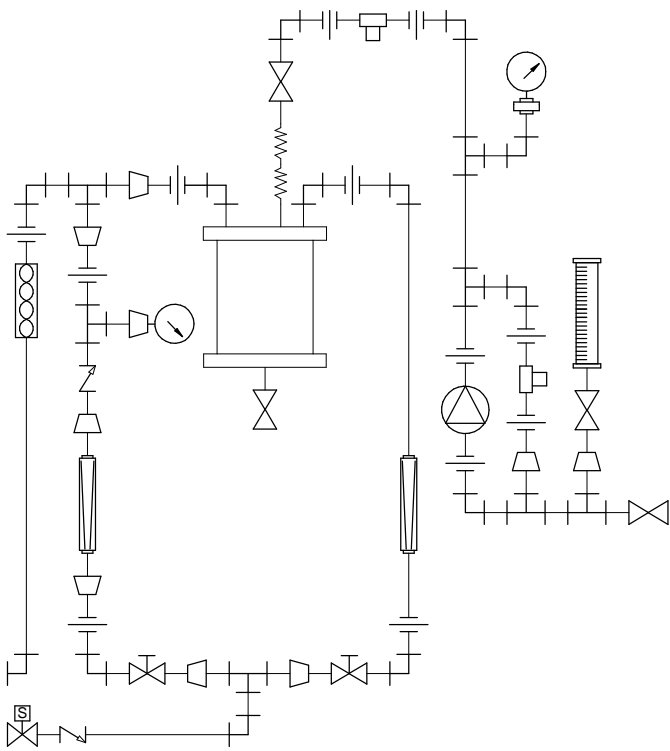
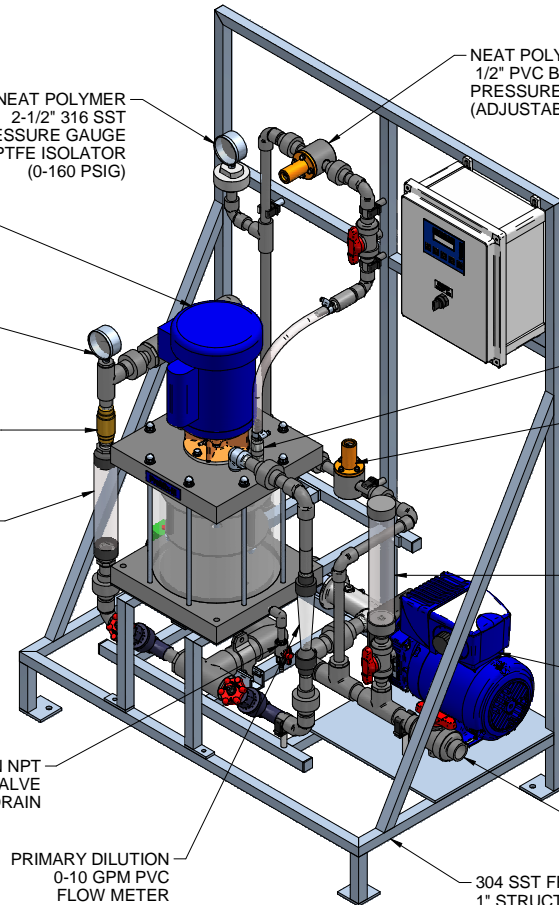
LEFT ISOMETRIC VIEW



1/4" PVC/VITON NPT
BALL VALVE
MIXING CHAMBER DRAIN

PRIMARY DILUTION
0-10 GPM PVC
FLOW METER
WITH REED SWITCH

RIGHT ISOMETRIC VIEW

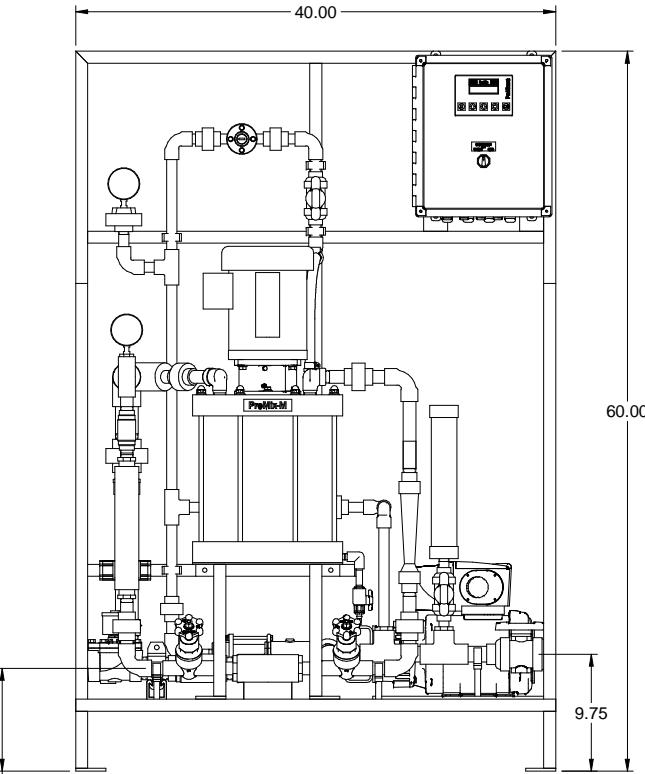


PIPING SCHEMATIC

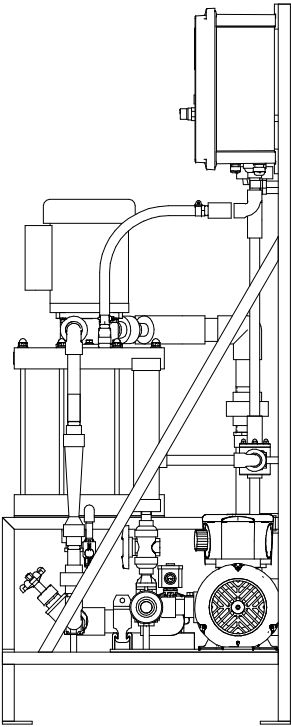
NOTES:

- ALL PIPING AND FITTINGS SHALL BE 1/2", 3/4", 1" AND 1-1/2" SCH. 80 PVC SOCKET WELD WITH VITON SEALS AS REQUIRED BY COMPONENTS.
- EMULSION POLYMER BLENDING SYSTEM WITH THREE ZONE PVC MIXING CHAMBER.
- REQUIRED INCOMING POWER:

120VAC, 60HZ, 1 PHASE, 20 AMP CURRENT RATING AT 120 VAC
- ALL DIMENSIONS ARE IN INCHES AND ARE SHOWN FOR REFERENCE ONLY.
- SEEPEX PUMP MUST BE INSTALLED SO THAT IT HAS A FLOODED SUCTION. DO NOT RUN THE SEEPEX PUMP DRY.



FRONT VIEW



SIDE VIEW

MAXIMUM TESTING PRESSURE =	150 PSI
MAXIMUM OPERATING PRESSURE =	100 PSI
CHEMICAL SERVICE =	POLYMER

B	04/14/11	P/N 7746571 WAS 7746569	GJS		
A	01/26/11	REMOVED SELF FILL OPTION	GJS		
0	09/24/10	FIRST ISSUE	GJS		
REV	DATE	DESCRIPTION	BY	APPD	REVD


REVISIONS

CUSTOMER **PROMINENT FLUID CONTROLS INC.
(PROMIX M SYSTEM)**

JOB No **7746644** PURCHASE ORDER No **N/A**

TITLE **PROMIX M_0-600X2-5.0PA SYSTEM SKID
GENERAL ARRANGEMENT**

THIS DRAWING IS THE PROPERTY OF PROMINENT FLUID CONTROLS INC. AND SHALL NOT BE COPIED OR
TRANSFERRED WITHOUT THE WRITTEN CONSENT OF PROMINENT FLUID CONTROLS INC.

ENGINEERS SEAL			ProMinent[®]		THE PROMINENT GROUP OF COMPANIES	
	PITTSBURGH, PA USA		WWW.PROMINENT.US			
	PROMINENT FLUID CONTROLS LTD. 490 SOUTHGATE DRIVE. GUELPH, ONTARIO, CANADA N1H 6J3 TEL. 519 836 5692 FAX. 519 836 5226		PROMINENT FLUID CONTROLS INC. RIDC PARK WEST 136 INDUSTRY DRIVE, PITTSBURGH P.A., USA. 15275 TEL. 412 787 2484 FAX. 412 787 0704			
	DESIGNED GJS		APPROVED			
	DRAWN GJS		SCALE N.T.S.		DATE 09/24/10	
CHECKED JMS		DATE				

DWG No	7746644-200	REV	B	PAGE	1/1
--------	-------------	-----	---	------	-----