

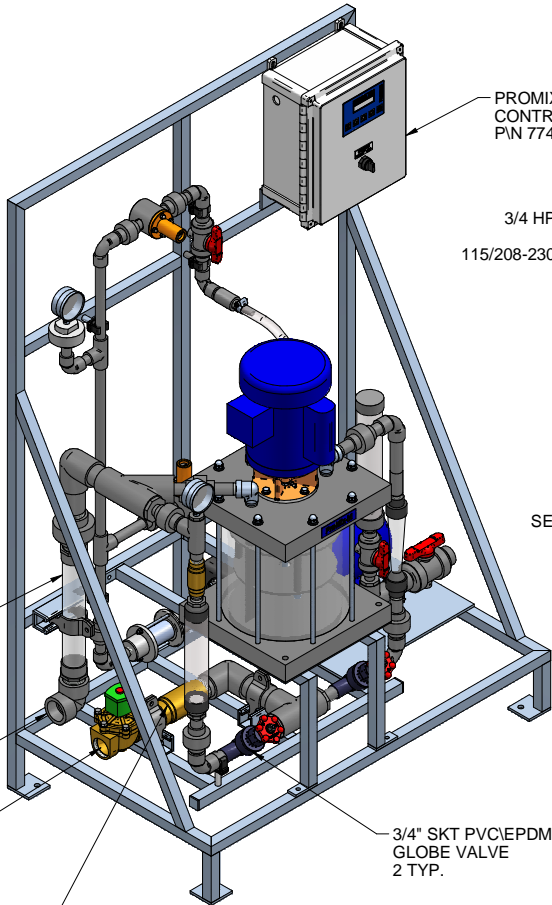
PLAN VIEW

1-1/2" CLEAR PVC
STATIC MIXER
POLYMER SOLUTION
INSPECTION WINDOW

1-1/2" PVC NPT
ELBOW
POLYMER OUTLET

1-1/2" BRASS NPT
120V NORMALLY CLOSED
SOLENOID VALVE
WATER INLET

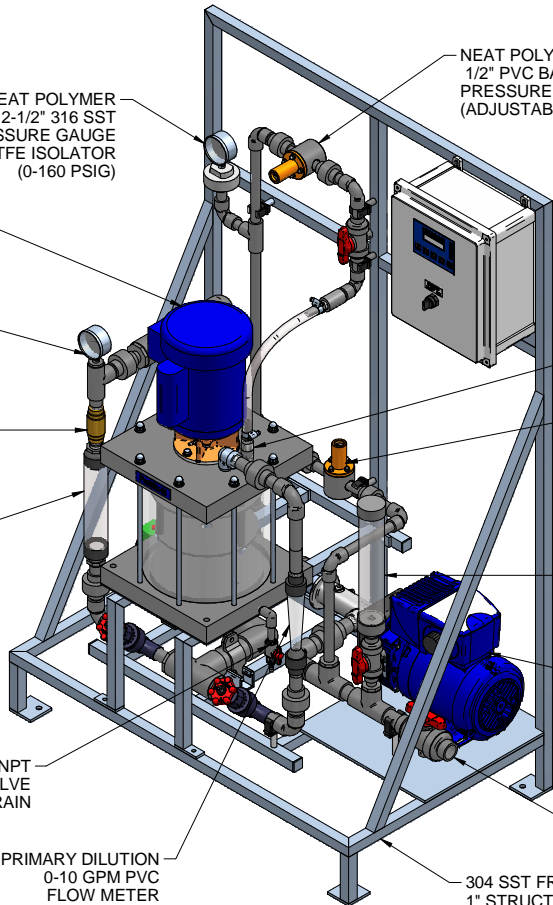
1-1/2" BRASS FNPT
CHECK VALVE



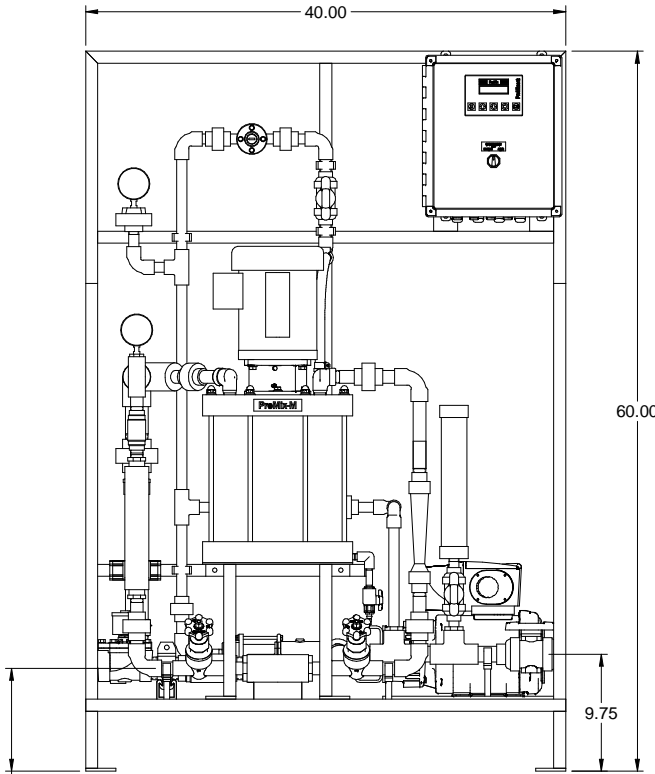
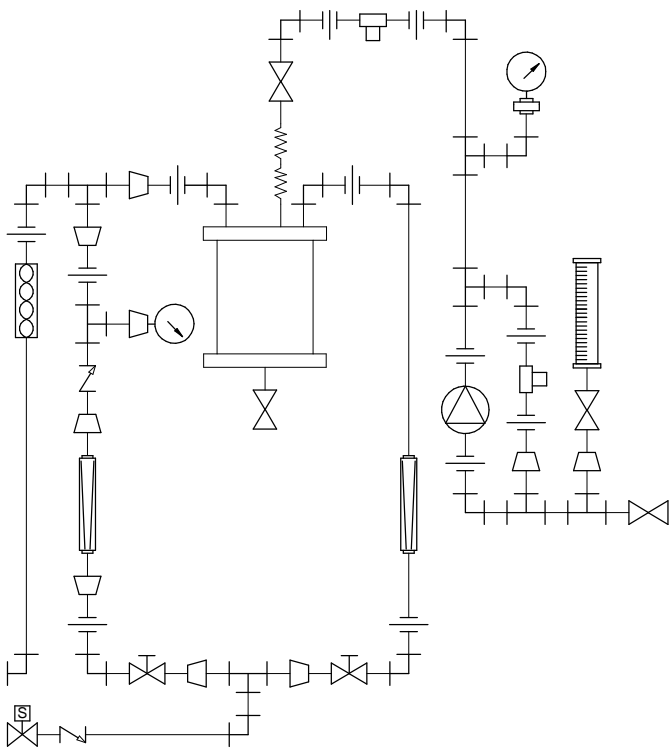
LEFT ISOMETRIC VIEW

1/4" PVC/VITON NPT
BALL VALVE
MIXING CHAMBER DRAIN

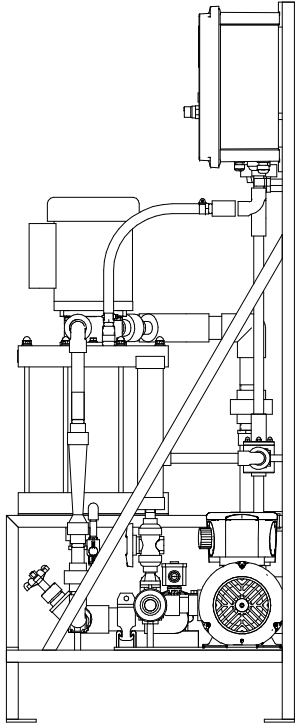
PRIMARY DILUTION
0-10 GPM PVC
FLOW METER
WITH REED SWITCH



RIGHT ISOMETRIC VIEW



FRONT VIEW



NOTES:

- ALL PIPING AND FITTINGS SHALL BE 1/2", 3/4", 1" AND 1-1/2" SCH. 80 PVC SOCKET WELD WITH VITON SEALS AS REQUIRED BY COMPONENTS.
- EMULSION POLYMER BLENDING SYSTEM WITH THREE ZONE PVC MIXING CHAMBER.
- REQUIRED INCOMING POWER:

120VAC, 60HZ, 1 PHASE, 20 AMP CURRENT RATING AT 120 VAC
- ALL DIMENSIONS ARE IN INCHES AND ARE SHOWN FOR REFERENCE ONLY.
- SEEPLEX PUMP MUST BE INSTALLED SO THAT IT HAS A FLOODED SUCTION. DO NOT RUN THE SEEPLEX PUMP DRY.

MAXIMUM TESTING PRESSURE =	150 PSI
MAXIMUM OPERATING PRESSURE =	100 PSI
CHEMICAL SERVICE =	POLYMER

A	01/26/11	REMOVED SELF FILL OPTION	GJS		
0	09/24/10	FIRST ISSUE	GJS		
REV	DATE	DESCRIPTION	BY	APPD	REVD



REVISIONS

CUSTOMER **PROMINENT FLUID CONTROLS INC.
(PROMIX M SYSTEM)**

JOB No **7746645** PURCHASE ORDER No **N/A**

TITLE **PROMIX M_0-600X2-10.0PA SYSTEM SKID
GENERAL ARRANGEMENT**

THIS DRAWING IS THE PROPERTY OF PROMINENT FLUID CONTROLS INC. AND SHALL NOT BE COPIED OR
TRANSFERRED WITHOUT THE WRITTEN CONSENT OF PROMINENT FLUID CONTROLS INC.

ENGINEERS SEAL	 	
	PITTSBURGH, PA USA	WWW.PROMINENT.US
	PROMINENT FLUID CONTROLS LTD. 490 SOUTHGATE DRIVE. GUELPH, ONTARIO, CANADA N1H 6J3 TEL 519 836 5692 FAX 519 836 5226	PROMINENT FLUID CONTROLS INC. RIDC PARK WEST 136 INDUSTRY DRIVE, PITTSBURGH P.A., USA. 15275 TEL 412 787 2484 FAX 412 787 0704
	DESIGNED GJS	APPROVED
	DRAWN GJS	SCALE N.T.S.
CHECKED JMS		DATE 09/24/10

DWG No	7746645-200	REV	A	PAGE	1/1
--------	-------------	-----	---	------	-----