

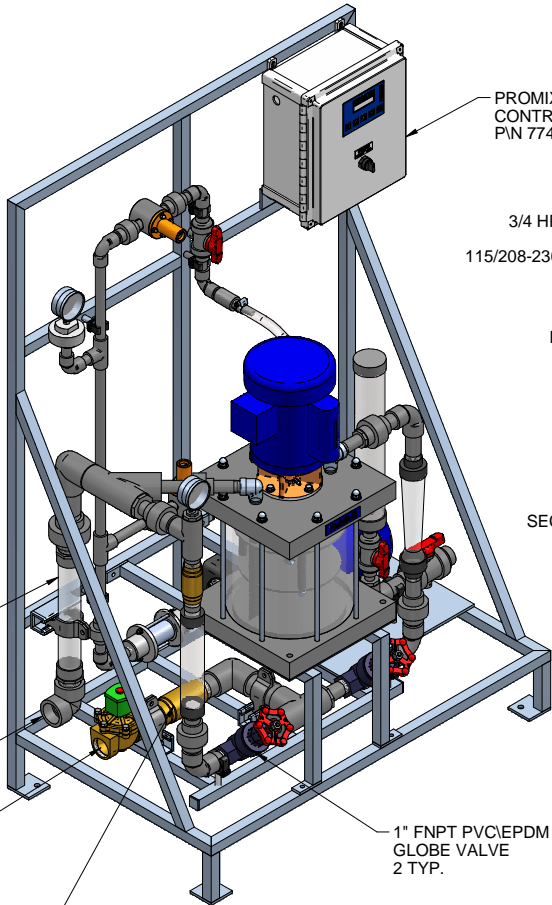
PLAN VIEW

1-1/2" CLEAR PVC
STATIC MIXER
POLYMER SOLUTION
INSPECTION WINDOW

1-1/2" PVC NPT
ELBOW
POLYMER OUTLET

1-1/2" BRASS NPT
120V NORMALLY CLOSED
SOLENOID VALVE
WATER INLET

1-1/2" BRASS FNPT
CHECK VALVE



LEFT ISOMETRIC VIEW

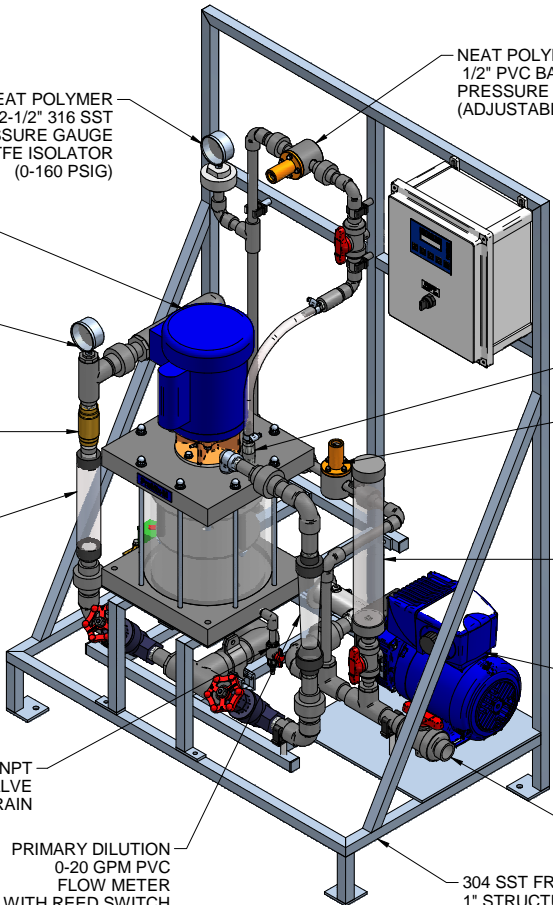
PROMIX M
CONTROL PANEL
P/N 7746569

3/4 HP LEESON MOTOR
P/N 7951060
115/208-230 V 1 PHASE TEFC

2-1/2" 316 SST
PRESSURE GAUGE
(0-160 PSIG)

1" BRASS FNPT
CHECK VALVE

SECONDARY DILUTION
0-21 GPM PVC
FLOW METER



RIGHT ISOMETRIC VIEW

NEAT POLYMER
2-1/2" 316 SST
PRESSURE GAUGE
WITH CPVC/PTFE ISOLATOR
(0-160 PSIG)

NEAT POLYMER
1/2" PVC BACK
PRESSURE VALVE
(ADJUSTABLE 0-150 PSIG)

NEAT POLYMER
1/2" NPT INJECTION VALVE

NEAT POLYMER
1/2" PVC PRESSURE
RELIEF VALVE
(ADJUSTABLE 0-150 PSIG)

NEAT POLYMER
1000 mL PVC
CALIBRATION COLUMN

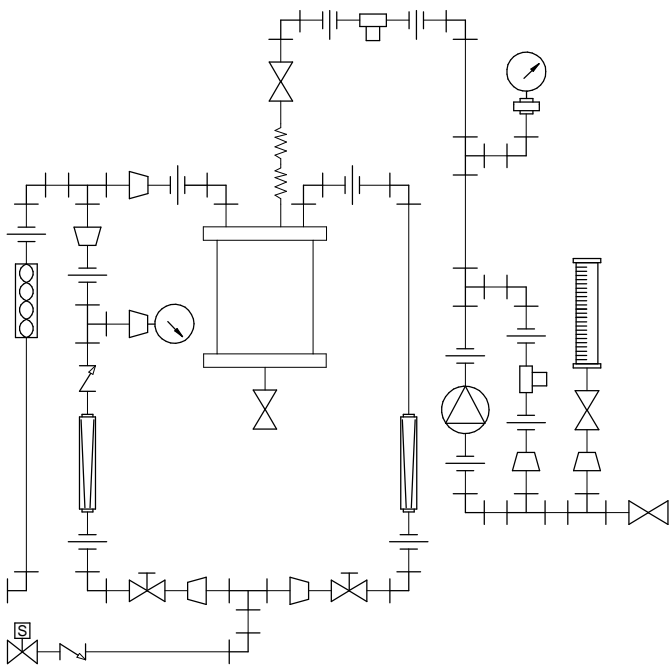
NEAT POLYMER
PROGRESSIVE CAVITY PUMP
SEEPEX MODEL MDP
MDP 006-12/A6-P8-P8-H0-GA-X
MAX. CAPACITY: 24.0 GPH @100 PSIG
MAX. RPM: 552

1" PVC/VITON NPT
BALL VALVE
NEAT POLYMER INLET

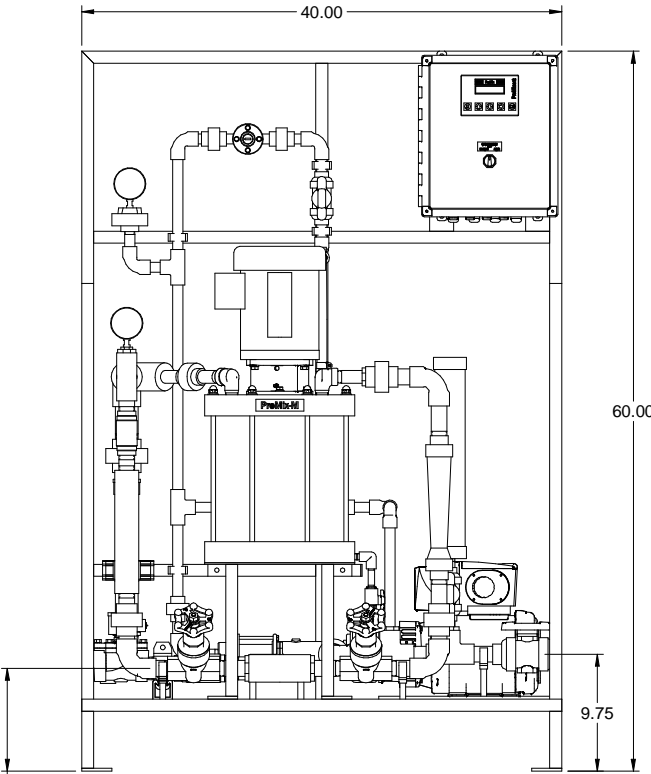
304 SST FRAME WELDED
1" STRUCTURAL TUBING

1/4" PVC/VITON NPT
BALL VALVE
MIXING CHAMBER DRAIN

PRIMARY DILUTION
0-20 GPM PVC
FLOW METER
WITH REED SWITCH

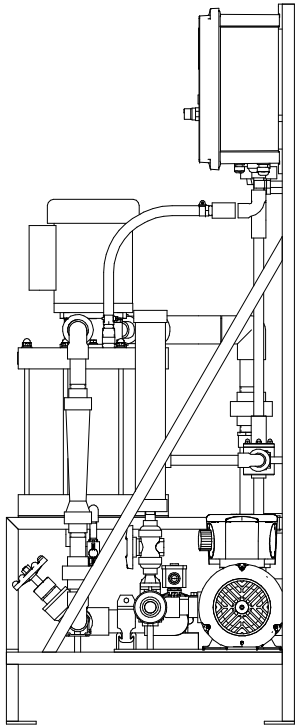


PIPING SCHEMATIC



FRONT VIEW

8.57 2 PLACES TYP.
WATER INLET AND
POLYMER OUTLET



SIDE VIEW

- NOTES:
- ALL PIPING AND FITTINGS SHALL BE 1/2", 3/4", 1" AND 1-1/2" SCH. 80 PVC SOCKET WELD WITH VITON SEALS AS REQUIRED BY COMPONENTS.
 - EMULSION POLYMER BLENDING SYSTEM WITH THREE ZONE PVC MIXING CHAMBER.
 - REQUIRED INCOMING POWER:


120VAC, 60HZ, 1 PHASE, 20 AMP CURRENT RATING AT 120 VAC
 - ALL DIMENSIONS ARE IN INCHES AND ARE SHOWN FOR REFERENCE ONLY.
 - SEEPEX PUMP MUST BE INSTALLED SO THAT IT HAS A FLOODED SUCTION. DO NOT RUN THE SEEPEX PUMP DRY.

MAXIMUM TESTING PRESSURE =	150 PSI
MAXIMUM OPERATING PRESSURE =	100 PSI
CHEMICAL SERVICE =	POLYMER

A	01/26/11	REMOVED SELF FILL OPTION	GJS		
0	09/24/10	FIRST ISSUE	GJS		
REV	DATE	DESCRIPTION	BY	APPD	REVD

REVISIONS			
CUSTOMER	PROMINENT FLUID CONTROLS INC. (PROMIX M SYSTEM)		
JOB No	7746647	PURCHASE ORDER No	N/A
TITLE	PROMIX M_0-1200X2-24.0PA SYSTEM SKID GENERAL ARRANGEMENT		

THIS DRAWING IS THE PROPERTY OF PROMINENT FLUID CONTROLS INC. AND SHALL NOT BE COPIED OR TRANSFERRED WITHOUT THE WRITTEN CONSENT OF PROMINENT FLUID CONTROLS INC.

ENGINEERS SEAL			ProMinent [®] THE PROMINENT GROUP OF COMPANIES		
	PITTSBURGH, PA USA		WWW.PROMINENT.US		
	PROMINENT FLUID CONTROLS LTD. 490 SOUTHGATE DRIVE. GUELPH, ONTARIO, CANADA N1H 6J3 TEL 519 836 5692 FAX 519 836 5226		PROMINENT FLUID CONTROLS INC. RIDC PARK WEST 136 INDUSTRY DRIVE, PITTSBURGH P.A., USA. 15275 TEL 412 787 2484 FAX 412 787 0704		
	DESIGNED GJS		APPROVED		
	DRAWN GJS		SCALE N.T.S.		
CHECKED JMS		DATE		09/24/10	

DWG No	7746647-200	REV	A	PAGE	1/1
--------	-------------	-----	---	------	-----