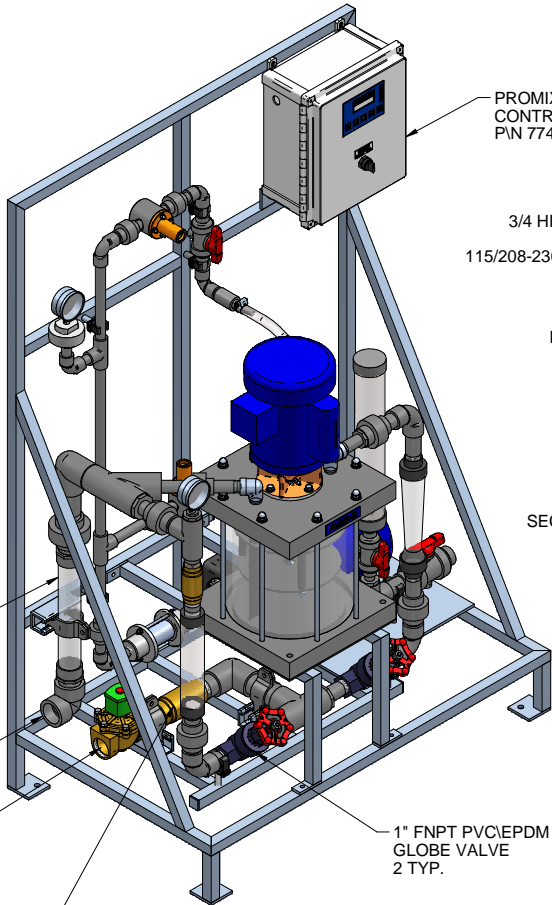


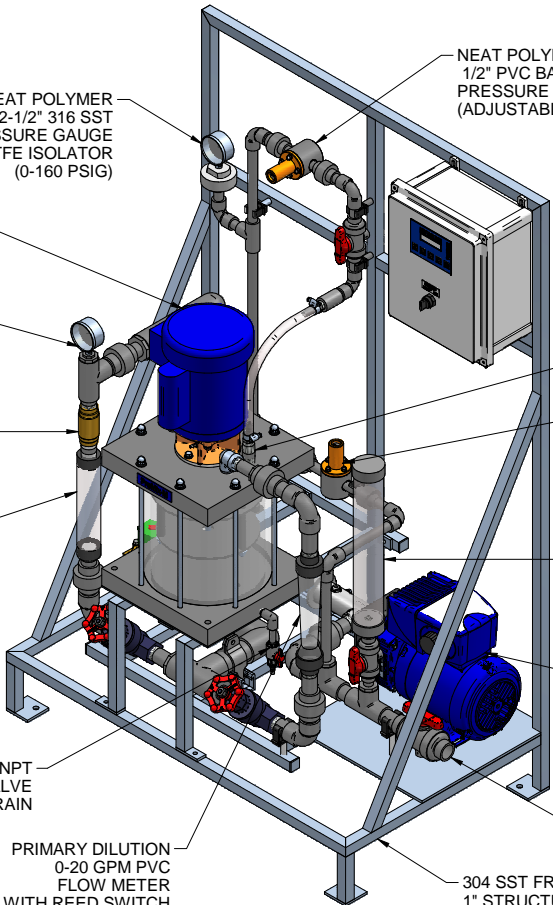
PLAN VIEW

- 1-1/2" CLEAR PVC STATIC MIXER POLYMER SOLUTION INSPECTION WINDOW
- 1-1/2" PVC NPT ELBOW POLYMER OUTLET
- 1-1/2" BRASS NPT 120V NORMALLY CLOSED SOLENOID VALVE WATER INLET
- 1-1/2" BRASS FNPT CHECK VALVE



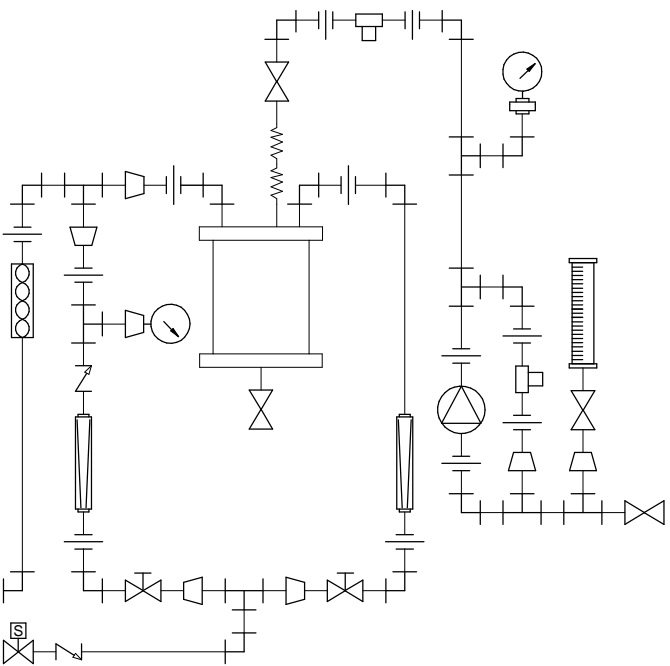
LEFT ISOMETRIC VIEW

- PROMIX M CONTROL PANEL P/N 7746571
- NEAT POLYMER 2-1/2" 316 SST PRESSURE GAUGE WITH CPVC/PTFE ISOLATOR (0-160 PSIG)
- 3/4 HP LEESON MOTOR P/N 7951060 115/208-230 V 1 PHASE TEFC
- 2-1/2" 316 SST PRESSURE GAUGE (0-160 PSIG)
- 1" BRASS FNPT CHECK VALVE
- SECONDARY DILUTION 0-21 GPM PVC FLOW METER
- 1" FNPT PVC/EPDM GLOBE VALVE 2 TYP.



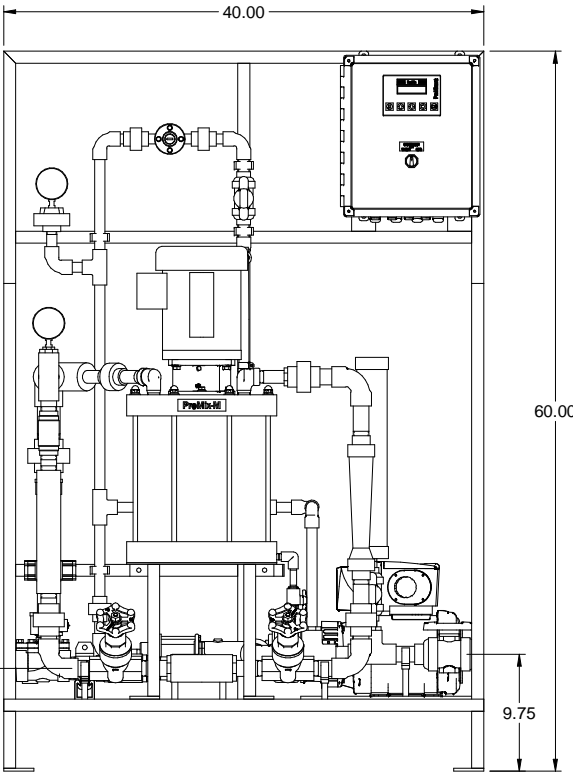
RIGHT ISOMETRIC VIEW

- NEAT POLYMER 1/2" PVC BACK PRESSURE VALVE (ADJUSTABLE 0-150 PSIG)
- NEAT POLYMER 1/2" NPT INJECTION VALVE
- NEAT POLYMER 1/2" PVC PRESSURE RELIEF VALVE (ADJUSTABLE 0-150 PSIG)
- NEAT POLYMER 1000 mL PVC CALIBRATION COLUMN
- NEAT POLYMER PROGRESSIVE CAVITY PUMP SEEPEX MODEL MDP MDP 006-12/A6-P8-P8-H0-GA-X MAX. CAPACITY: 24.0 GPH @100 PSIG MAX. RPM: 552
- 1" PVC/VITON NPT BALL VALVE NEAT POLYMER INLET
- 304 SST FRAME WELDED 1" STRUCTURAL TUBING

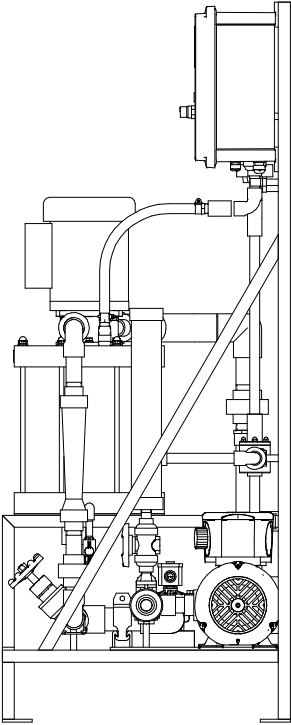


PIPING SCHEMATIC

- NOTES:
- ALL PIPING AND FITTINGS SHALL BE 1/2", 3/4", 1" AND 1-1/2" SCH. 80 PVC SOCKET WELD WITH VITON SEALS AS REQUIRED BY COMPONENTS.
 - EMULSION POLYMER BLENDING SYSTEM WITH THREE ZONE PVC MIXING CHAMBER.
 - REQUIRED INCOMING POWER:
120VAC, 60HZ, 1 PHASE, 20 AMP CURRENT RATING AT 120 VAC
 - ALL DIMENSIONS ARE IN INCHES AND ARE SHOWN FOR REFERENCE ONLY.
 - SEEPEX PUMP MUST BE INSTALLED SO THAT IT HAS A FLOODED SUCTION. DO NOT RUN THE SEEPEX PUMP DRY.



FRONT VIEW



SIDE VIEW

8.57 2 PLACES TYP. WATER INLET AND POLYMER OUTLET

MAXIMUM TESTING PRESSURE =	150 PSI
MAXIMUM OPERATING PRESSURE =	100 PSI
CHEMICAL SERVICE =	POLYMER

B	04/14/11	P/N 7746571 WAS 7746569		GJS		
A	01/26/11	REMOVED SELF FILL OPTION			GJS	
0	09/24/10	FIRST ISSUE			GJS	
REV	DATE	DESCRIPTION			BY	APPD/REV'D
REVISIONS						
CUSTOMER PROMINENT FLUID CONTROLS INC. (PROMIX M SYSTEM)						
JOB No		7746647		PURCHASE ORDER No		N/A
TITLE PROMIX M_0-1200X2-24.0PA SYSTEM SKID GENERAL ARRANGEMENT						
THIS DRAWING IS THE PROPERTY OF PROMINENT FLUID CONTROLS INC. AND SHALL NOT BE COPIED OR TRANSFERRED WITHOUT THE WRITTEN CONSENT OF PROMINENT FLUID CONTROLS INC.						
ENGINEERS SEAL		<div><div><div><div><div></div><div>pfc</div><div>ProMinent</div></div></div><div><div><div><div><div></div><div>ProMinent®</div></div></div><div>THE PROMINENT GROUP OF COMPANIES</div></div></div></div></div>				
		PITTSBURGH, PA USA		WWW.PROMINENT.US		
		PROMINENT FLUID CONTROLS LTD. 490 SOUTHGATE DRIVE. GUELPH, ONTARIO, CANADA N1H 6J3 TEL 519 836 5692 FAX 519 836 5226		PROMINENT FLUID CONTROLS INC. RIDC PARK WEST 136 INDUSTRY DRIVE, PITTSBURGH P.A., USA. 15275 TEL 412 787 2484 FAX 412 787 0704		
		DESIGNED GJS		APPROVED		
		DRAWN GJS		SCALE N.T.S.		
		CHECKED JMS		DATE 09/24/10		
DWG No				REV		PAGE
7746647-200				B		1/1