

PLAN VIEW

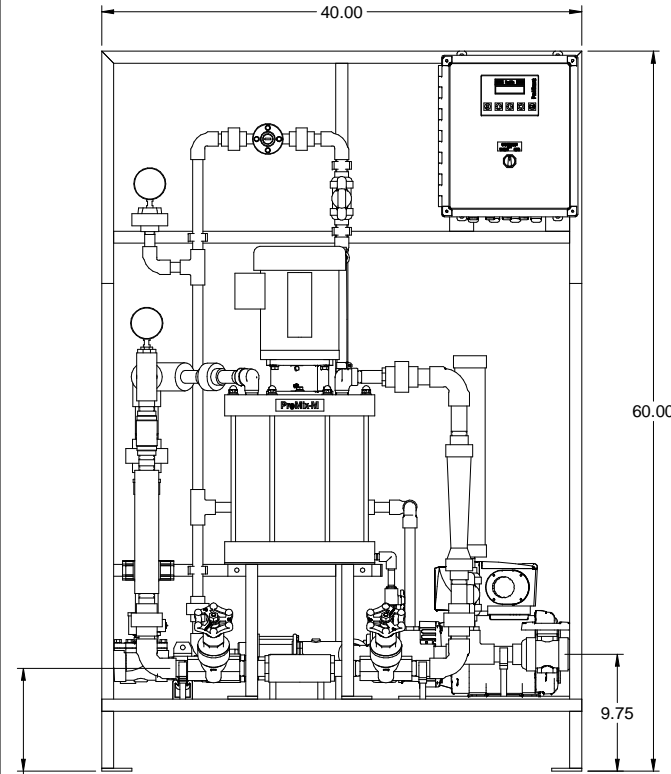
1-1/2" CLEAR PVC  
STATIC MIXER  
POLYMER SOLUTION  
INSPECTION WINDOW

1-1/2" PVC NPT  
ELBOW  
POLYMER OUTLET

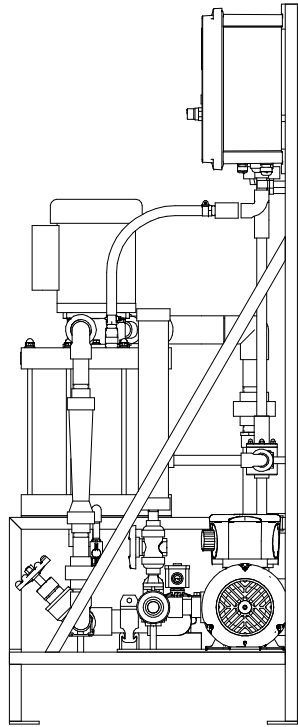
1-1/2" BRASS NPT  
120V NORMALLY CLOSED  
SOLENOID VALVE  
WATER INLET

1-1/2" BRASS FNPT  
CHECK VALVE

LEFT ISOMETRIC VIEW



FRONT VIEW



SIDE VIEW

PROMIX M  
CONTROL PANEL  
P/N 7746571

3/4 HP LEESON MOTOR  
P/N 7951060  
115/208-230 V 1 PHASE TEFC

2-1/2" 316 SST  
PRESSURE GAUGE  
(0-160 PSIG)

1" BRASS FNPT  
CHECK VALVE

SECONDARY DILUTION  
0-30 GPM PVC  
FLOW METER

1/4" PVC/VITON NPT  
BALL VALVE  
MIXING CHAMBER DRAIN

PRIMARY DILUTION  
0-25 GPM PVC  
FLOW METER  
WITH REED SWITCH

RIGHT ISOMETRIC VIEW

NEAT POLYMER  
2-1/2" 316 SST  
PRESSURE GAUGE  
WITH CPVC/PTFE ISOLATOR  
(0-160 PSIG)

NEAT POLYMER  
1/2" PVC BACK  
PRESSURE VALVE  
(ADJUSTABLE 0-150 PSIG)

NEAT POLYMER  
1/2" NPT INJECTION VALVE

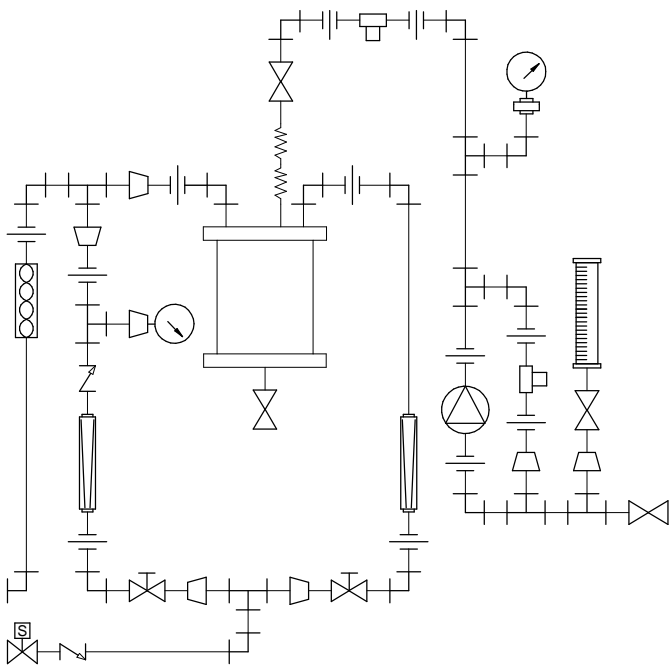
NEAT POLYMER  
1/2" PVC PRESSURE  
RELIEF VALVE  
(ADJUSTABLE 0-150 PSIG)

NEAT POLYMER  
1000 mL PVC  
CALIBRATION COLUMN

NEAT POLYMER  
PROGRESSIVE CAVITY PUMP  
SEEPEX MODEL MDP  
MDP 006-12/A6-P8-P8-H0-GA-X  
MAX. CAPACITY: 24.0 GPH @100 PSIG  
MAX. RPM: 552

1" PVC/VITON NPT  
BALL VALVE  
NEAT POLYMER INLET

304 SST FRAME WELDED  
1" STRUCTURAL TUBING



PIPING SCHEMATIC

NOTES:

1. ALL PIPING AND FITTINGS SHALL BE 1/2", 3/4", 1" AND 1-1/2" SCH. 80 PVC SOCKET WELD WITH VITON SEALS AS REQUIRED BY COMPONENTS.
2. EMULSION POLYMER BLENDING SYSTEM WITH THREE ZONE PVC MIXING CHAMBER.
3. REQUIRED INCOMING POWER:  
120VAC, 60HZ, 1 PHASE, 20 AMP CURRENT RATING AT 120 VAC
4. ALL DIMENSIONS ARE IN INCHES AND ARE SHOWN FOR REFERENCE ONLY.
5. SEEPEX PUMP MUST BE INSTALLED SO THAT IT HAS A FLOODED SUCTION. DO NOT RUN THE SEEPEX PUMP DRY.

B	04/14/11	P/N 7746571 WAS 7746569	GJS		
A	01/26/11	REMOVED SELF FILL OPTION	GJS		
0	09/24/10	FIRST ISSUE	GJS		
REV	DATE	DESCRIPTION	BY	APPD	REVD


REVISIONS

CUSTOMER **PROMINENT FLUID CONTROLS INC. (PROMIX M SYSTEM)**

JOB No **7746649** PURCHASE ORDER No **N/A**

TITLE **PROMIX M\_0-1500X2-24.0PA SYSTEM SKID GENERAL ARRANGEMENT**

THIS DRAWING IS THE PROPERTY OF PROMINENT FLUID CONTROLS INC. AND SHALL NOT BE COPIED OR TRANSFERRED WITHOUT THE WRITTEN CONSENT OF PROMINENT FLUID CONTROLS INC.

ENGINEERS SEAL			<b>ProMinent</b> <sup>®</sup> THE PROMINENT GROUP OF COMPANIES	
	PITTSBURGH, PA USA		WWW.PROMINENT.US	
	PROMINENT FLUID CONTROLS LTD. 490 SOUTHGATE DRIVE. GUELPH, ONTARIO, CANADA N1H 6J3 TEL. 519 836 5692 FAX. 519 836 5226		PROMINENT FLUID CONTROLS INC. RIDC PARK WEST 136 INDUSTRY DRIVE, PITTSBURGH P.A., USA. 15275 TEL. 412 787 2484 FAX. 412 787 0704	
	DESIGNED <b>GJS</b>		APPROVED	
	DRAWN <b>GJS</b>		SCALE <b>N.T.S.</b>	
	CHECKED <b>JMS</b>		DATE <b>09/24/10</b>	

MAXIMUM TESTING PRESSURE =	150 PSI
MAXIMUM OPERATING PRESSURE =	100 PSI
CHEMICAL SERVICE =	POLYMER

DWG No	7746649-200	REV	B	PAGE	1/1
--------	-------------	-----	---	------	-----