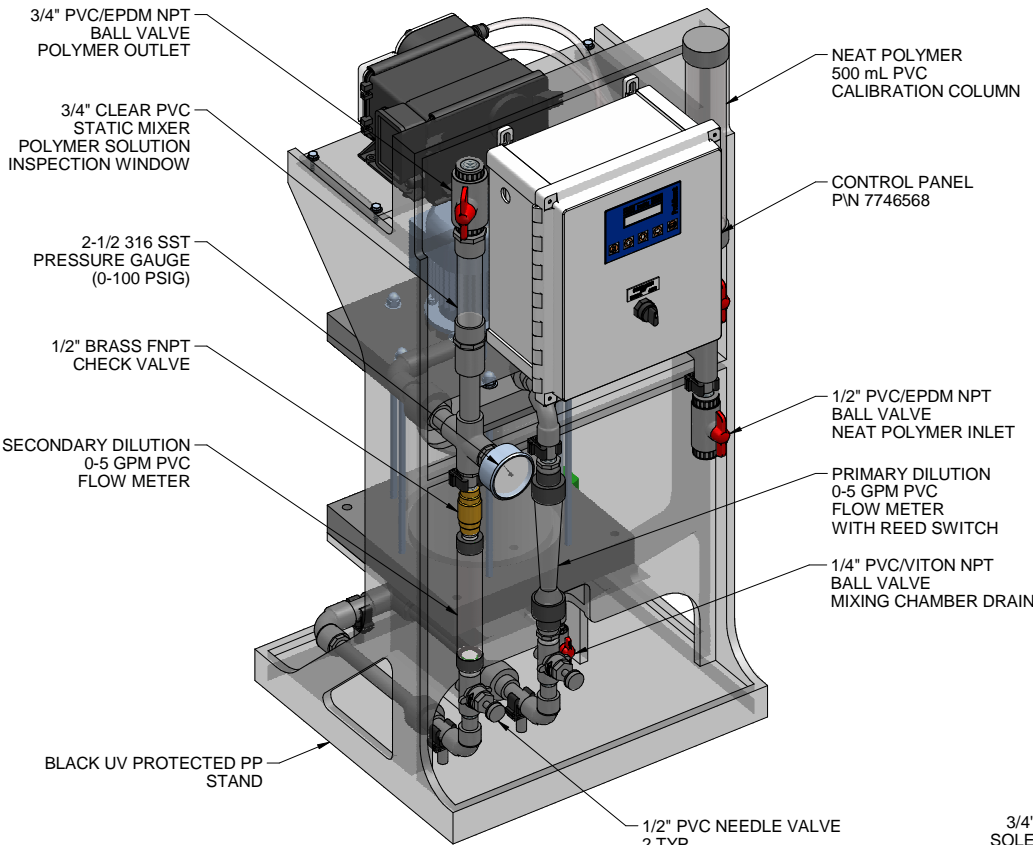
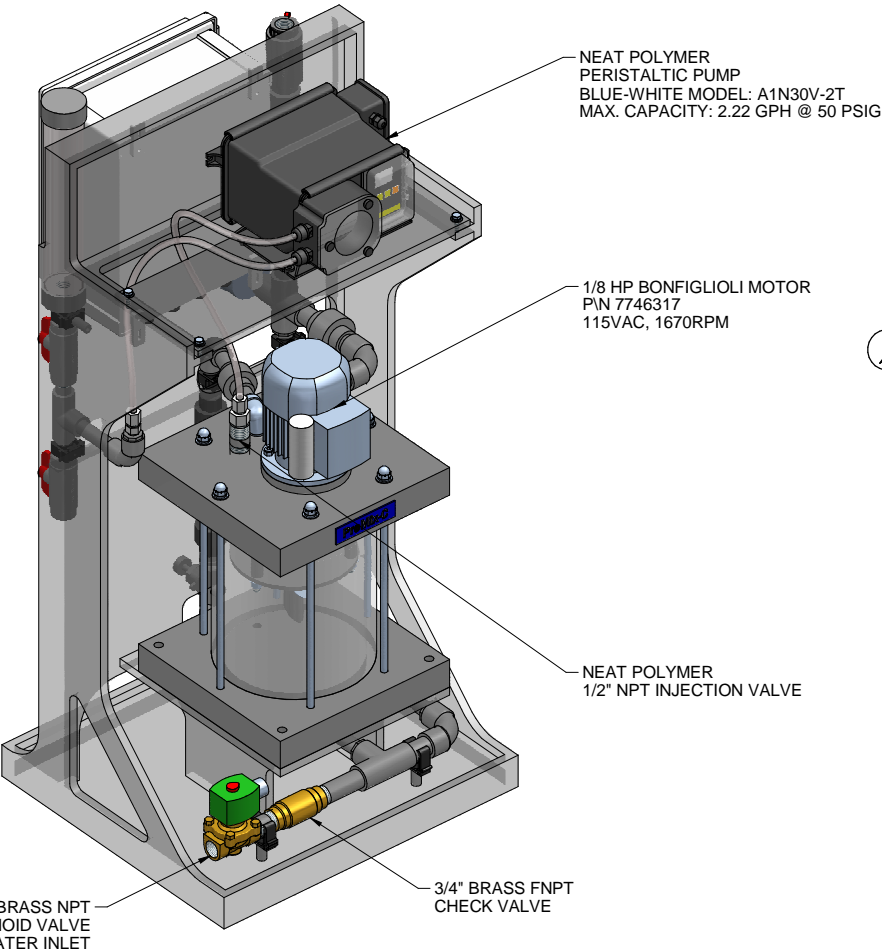


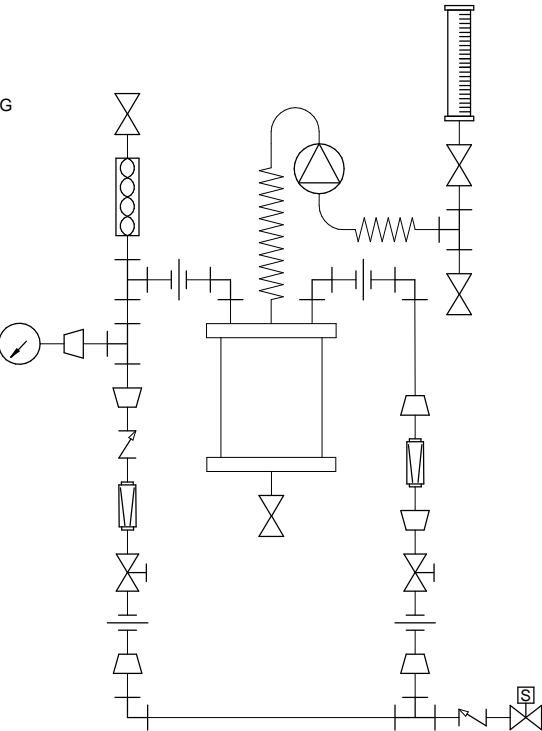
PLAN VIEW



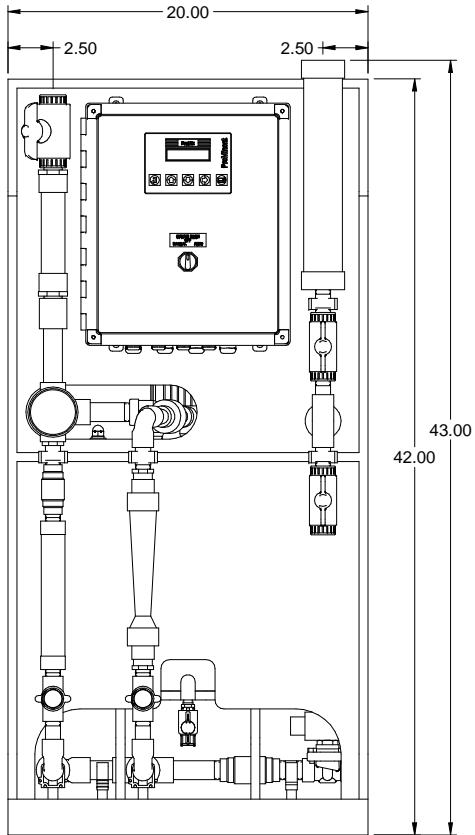
FRONT ISOMETRIC VIEW



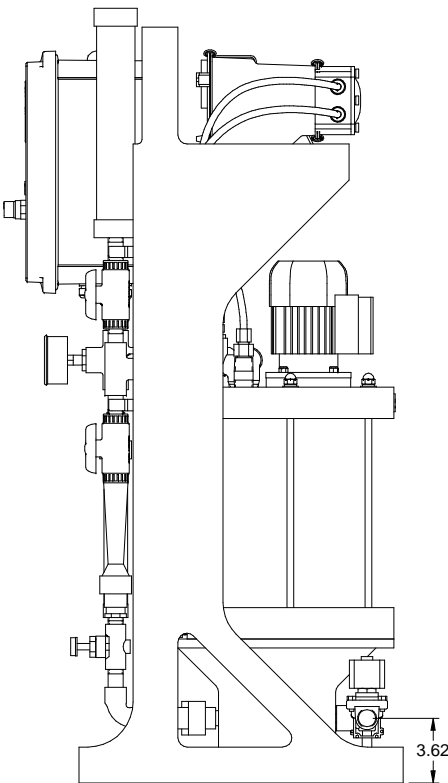
REAR ISOMETRIC VIEW



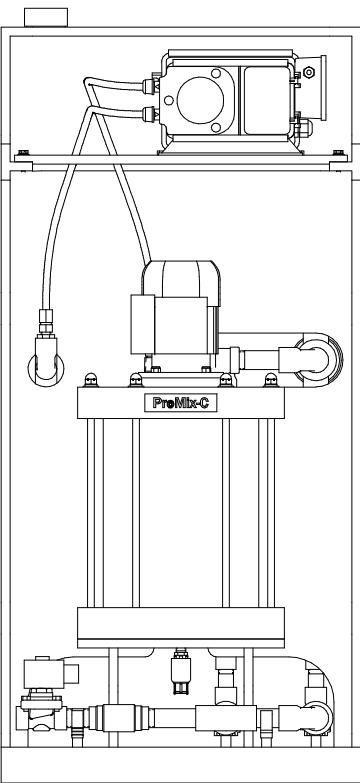
PIPING SCHEMATIC



FRONT VIEW



SIDE VIEW



REAR VIEW

- NOTES:
- ALL PIPING AND FITTINGS SHALL BE 1/2" AND 3/4" SCH. 80 PVC SOCKET WELD WITH VITON SEALS UNLESS OTHERWISE NOTED.
  - EMULSION POLYMER BLENDING SYSTEM WITH THREE ZONE PVC MIXING CHAMBER.
  - REQUIRED INCOMING POWER:  
120VAC, 60HZ, 1 PHASE, 15 AMP CURRENT RATING AT 120 VAC
  - ALL DIMENSIONS ARE IN INCHES AND ARE SHOWN FOR REFERENCE ONLY.

MAXIMUM TESTING PRESSURE =	150 PSI
MAXIMUM OPERATING PRESSURE =	50 PSI
CHEMICAL SERVICE =	POLYMER

0	12/04/12	FIRST ISSUE		GJS	
REV	DATE	DESCRIPTION		BY	APPD/REVD
REVISIONS					
CUSTOMER PROMINENT FLUID CONTROLS INC. (PROMIX C SYSTEM)					
JOB No 7747058		PURCHASE ORDER No N/A			
TITLE PROMIX C_300X2-2.22TA SYSTEM SKID GENERAL ARRANGEMENT					
THIS DRAWING IS THE PROPERTY OF PROMINENT FLUID CONTROLS INC. AND SHALL NOT BE COPIED OR TRANSFERRED WITHOUT THE WRITTEN CONSENT OF PROMINENT FLUID CONTROLS INC.					
ENGINEERS SEAL		<div><div><div><div>pfc</div><div>ProMinent</div></div><div><div>ProMinent®</div><div>THE PROMINENT GROUP OF COMPANIES</div></div></div></div>			
		<div><div><div>PITTSBURGH, PA USA</div><div>WWW.PROMINENT.US</div></div><div><div><div>PROMINENT FLUID CONTROLS LTD. 490 SOUTHGATE DRIVE. GUELPH, ONTARIO, CANADA N1H 6J3 TEL 519 836 5692 FAX 519 836 5226</div><div><div>PROMINENT FLUID CONTROLS INC. RIDC PARK WEST 136 INDUSTRY DRIVE, PITTSBURGH P.A., USA. 15275 TEL 412 787 2484 FAX 412 787 0704</div></div></div><div><div><div>DESIGNED GJS</div><div>APPROVED KH</div></div><div><div>DRAWN GJS</div><div>SCALE N.T.S.</div></div><div><div>CHECKED KH</div><div>DATE 12/04/12</div></div></div></div></div>			
DWG No 7747058-200		REV 0		PAGE 1/1	