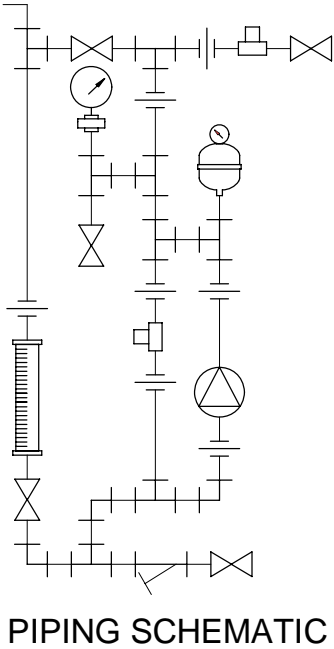
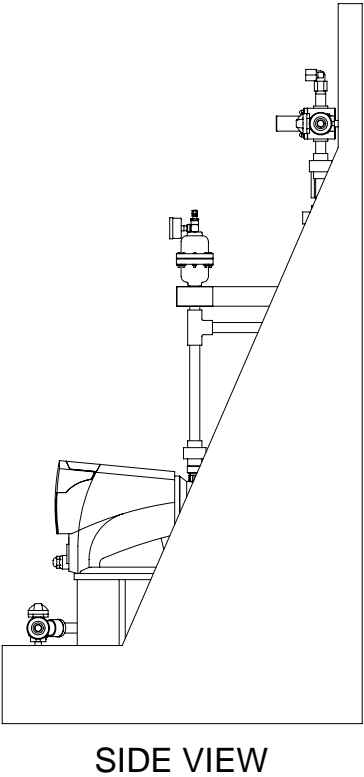
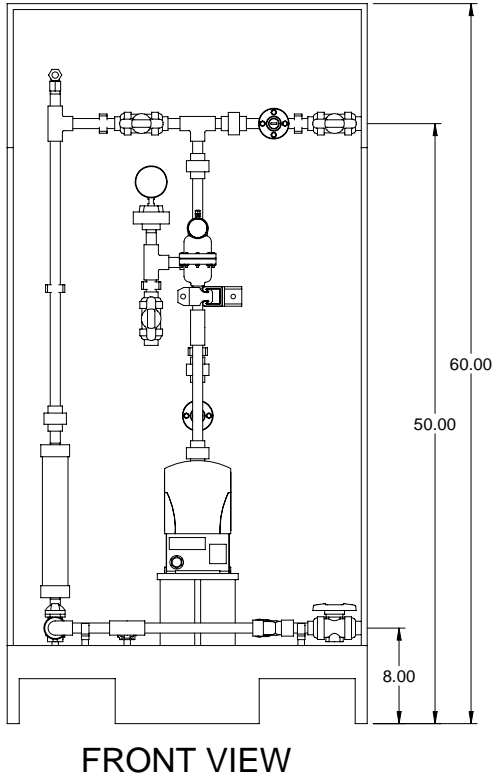



DLTA1020 MAX. CAPACITY: 5.0 GPH @ 145 PSIG  
DLTA0730 MAX. CAPACITY: 7.7 GPH @ 102 PSIG  
DLTA1612 MAX. CAPACITY: 3.0 GPH @ 232 PSIG  
DLTA1608 MAX. CAPACITY: 2.1 GPH @ 232 PSIG  
DLTA2508 MAX. CAPACITY: 2.0 GPH @ 363 PSIG



- NOTES:
- ALL PIPING AND FITTINGS SHALL BE 1/2" SCH. 80 PVC SOCKET WELD WITH VITON SEALS UNLESS OTHERWISE REQUIRED BY COMPONENTS.
  - ALL DIMENSIONS ARE IN INCHES AND ARE SHOWN FOR REFERENCE ONLY.

A	05/06/09	REVISED PER BASIC SKID		GJS	
0	01/25/08	FIRST ISSUE		GJS	
REV	DATE	DESCRIPTION		BY	APPD/REV
REVISIONS					
CUSTOMER <b>PROMINENT FLUID CONTROLS INC. (PRE-ENGINEERED SYSTEM)</b>					
JOB No		7749021		PURCHASE ORDER No	
TITLE		<b>SS1-E_FLOOR_050_PVC/VITON_PD GENERAL ARRANGEMENT</b>			
THIS DRAWING IS THE PROPERTY OF PROMINENT FLUID CONTROLS INC. AND SHALL NOT BE COPIED OR TRANSFERRED WITHOUT THE WRITTEN CONSENT OF PROMINENT FLUID CONTROLS INC.					
ENGINEERS SEAL		<div><div></div><div><div>ProMinent®</div><div>THE PROMINENT GROUP OF COMPANIES</div></div></div> <div><div>PITTSBURGH, PA USA</div><div>WWW.PROMINENT.US</div><div>PROMINENT FLUID CONTROLS LTD. 490 SOUTHGATE DRIVE. GUELPH, ONTARIO, CANADA N1H 6J3 TEL. 519 836 5692 FAX. 519 836 5226</div><div>PROMINENT FLUID CONTROLS INC. RIDC PARK WEST 136 INDUSTRY DRIVE, PITTSBURGH P.A., USA. 15275 TEL. 412 787 2484 FAX. 412 787 0704</div><div>DESIGNED <b>GJS</b></div><div>DRAWN <b>GJS</b></div><div>CHECKED <b>DTH</b></div><div>APPROVED</div><div>SCALE <b>N.T.S.</b></div><div>DATE <b>01/25/08</b></div></div>			
DWG No		REV		PAGE	
7749021-200		A		1/1	