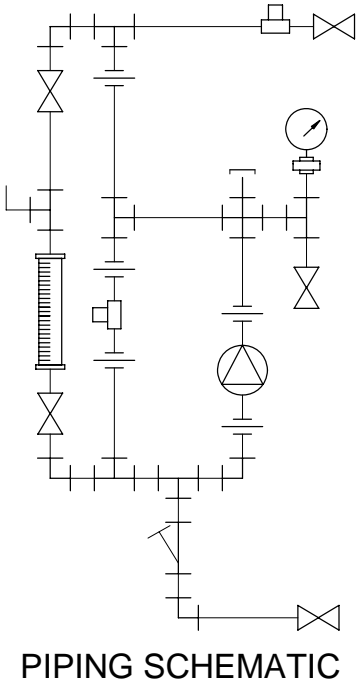
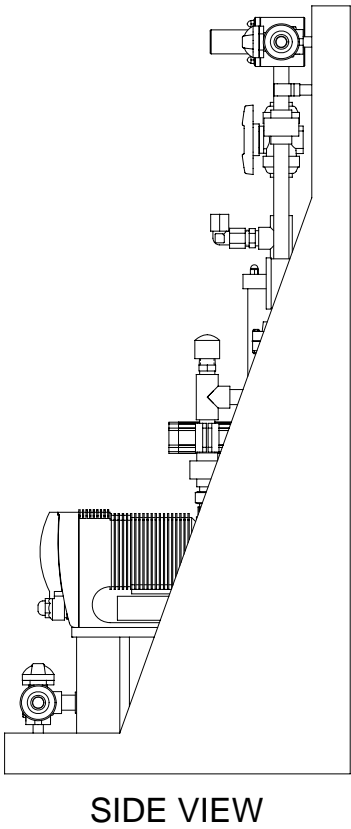


GAMA L SERIES METERING PUMP

GALA0220 MAX. CAPACITY: 5.0 GPH @ 29 PSIG  
GALA0232 MAX. CAPACITY: 8.4 GPH @ 29 PSIG  
GALA0413 MAX. CAPACITY: 3.2 GPH @ 58 PSIG  
GALA0420 MAX. CAPACITY: 4.5 GPH @ 58 PSIG  
GALA0708 MAX. CAPACITY: 1.9 GPH @ 101 PSIG  
GALA0713 MAX. CAPACITY: 2.9 GPH @ 101 PSIG  
GALA1005 MAX. CAPACITY: 1.1 GPH @ 145 PSIG  
GALA1008 MAX. CAPACITY: 1.8 GPH @ 145 PSIG  
GALA1605 MAX. CAPACITY: 1.1 GPH @ 232 PSIG



- NOTES:
- ALL PIPING AND FITTINGS SHALL BE 1/2"(20MM) SR232 PVDF FUSION WELD WITH VITON SEALS UNLESS OTHERWISE REQUIRED BY COMPONENTS.
  - ALL DIMENSIONS ARE IN INCHES AND ARE SHOWN FOR REFERENCE ONLY.

A	08/19/09	REVISED PER NEW PARTS		ALS	
0	01/28/08	FIRST ISSUE		GJS	
REV	DATE	DESCRIPTION		BY	APPD REV
REVISIONS					
CUSTOMER <b>PROMINENT FLUID CONTROLS INC. (PRE-ENGINEERED SYSTEM)</b>					
JOB No		7749122		PURCHASE ORDER No	
TITLE <b>SS1-C_FLOOR_050_PVDF/VITON GENERAL ARRANGEMENT</b>					
THIS DRAWING IS THE PROPERTY OF PROMINENT FLUID CONTROLS INC. AND SHALL NOT BE COPIED OR TRANSFERRED WITHOUT THE WRITTEN CONSENT OF PROMINENT FLUID CONTROLS INC.					
ENGINEERS SEAL		<div><div><div><div><div></div><div>ptc</div><div>ProMinent</div></div><div><div><div>ProMinent®</div><div>THE PROMINENT GROUP OF COMPANIES</div></div></div></div></div></div>			
		<div><div><div>PITTSBURGH, PA USA</div><div>WWW.PROMINENT.US</div><div><div><div>PROMINENT FLUID CONTROLS LTD. 490 SOUTHGATE DRIVE. GUELPH, ONTARIO, CANADA N1H 6J3 TEL. 519 836 5692      FAX. 519 836 5226</div><div><div>PROMINENT FLUID CONTROLS INC. RIDC PARK WEST 136 INDUSTRY DRIVE, PITTSBURGH P.A., USA. 15275 TEL. 412 787 2484      FAX. 412 787 0704</div></div></div></div></div></div>			
		<div><div><div>DESIGNED      GJS</div><div>APPROVED</div><div>DRAWN      GJS</div><div>SCALE      N.T.S.</div><div>CHECKED      DTH</div><div>DATE      01/28/08</div></div></div>			
DWG No				REV	PAGE
7749122-200				A	1/1

MAXIMUM TESTING PRESSURE =	150 PSI
MAXIMUM OPERATING PRESSURE =	29-150 PSI
CHEMICAL SERVICE =	