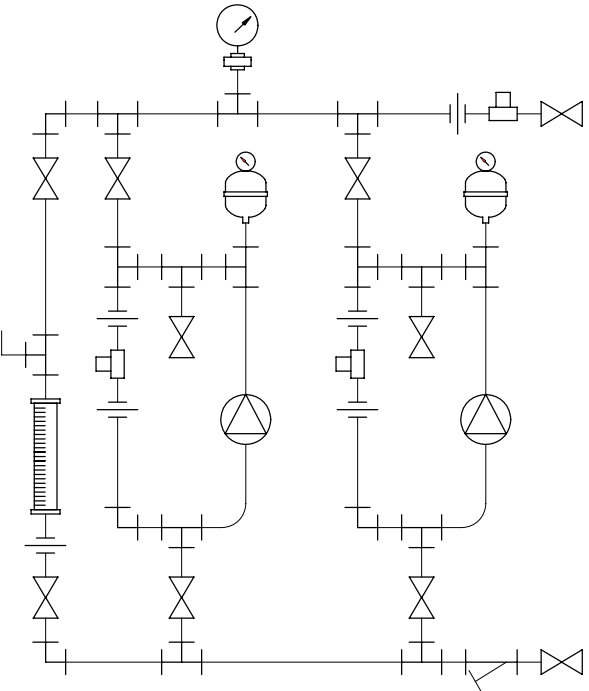
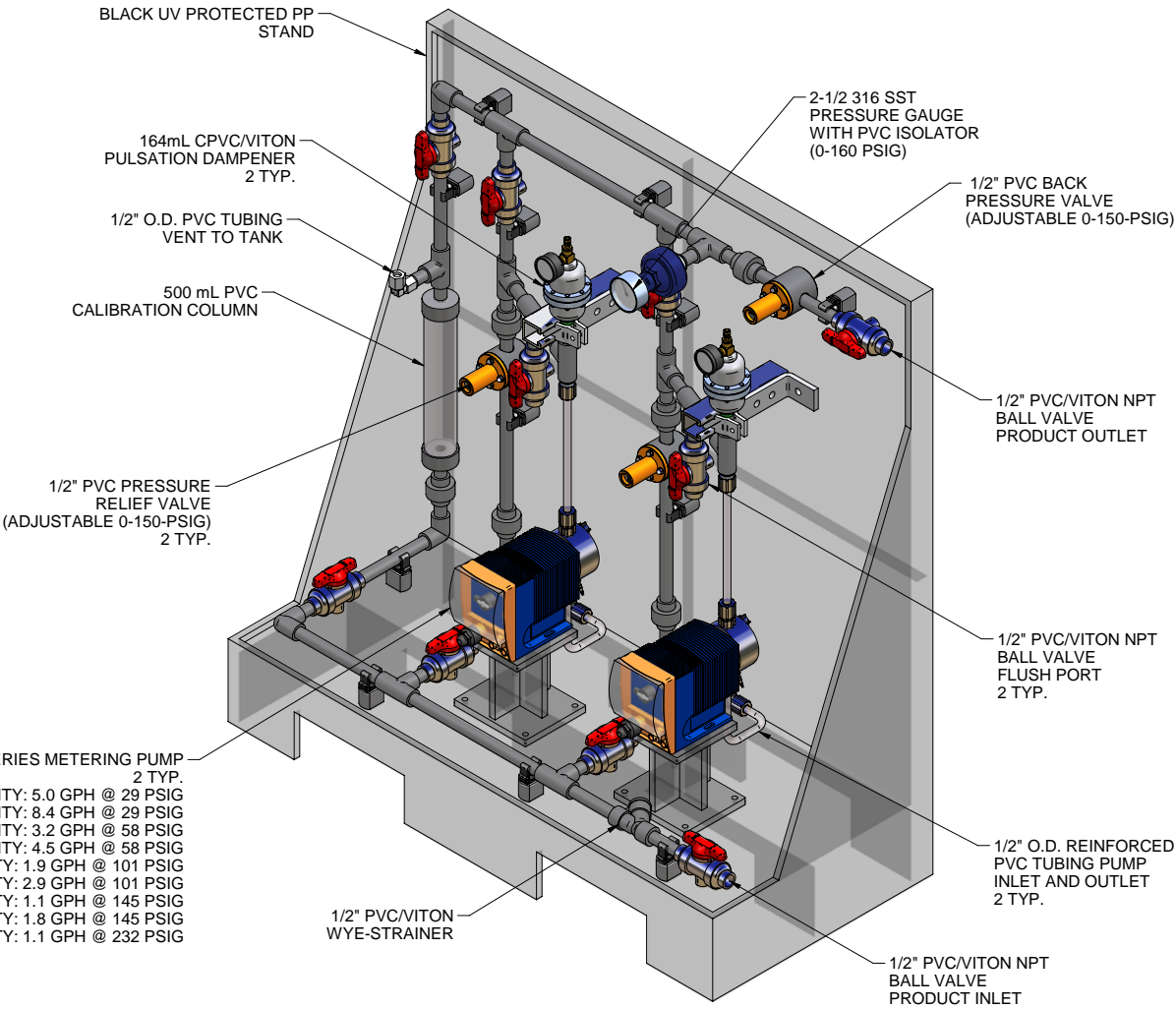
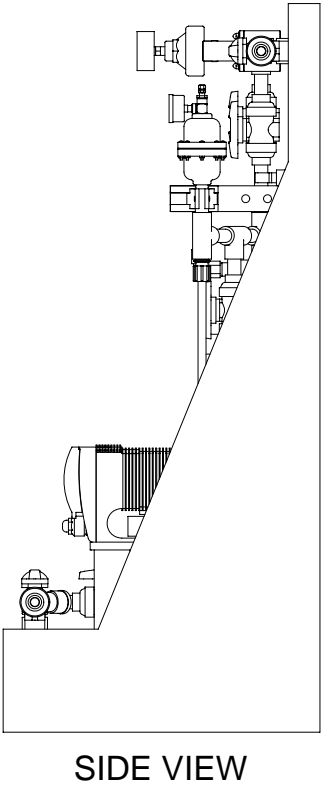
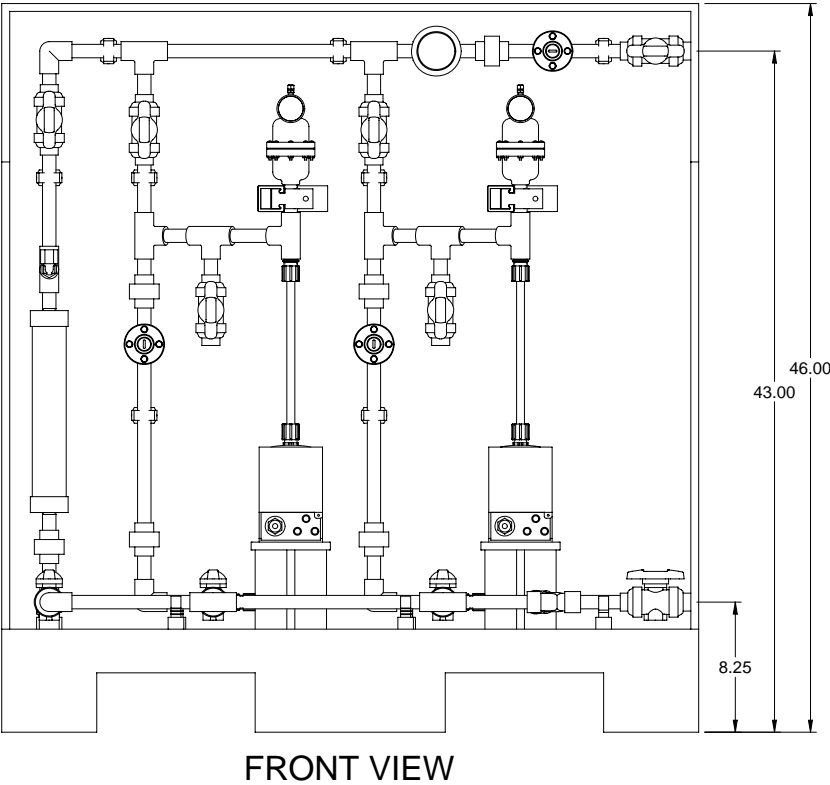



GAMMA L SERIES METERING PUMP
2 TYP.
GALA0220 MAX. CAPACITY: 5.0 GPH @ 29 PSIG
GALA0232 MAX. CAPACITY: 8.4 GPH @ 29 PSIG
GALA0413 MAX. CAPACITY: 3.2 GPH @ 58 PSIG
GALA0420 MAX. CAPACITY: 4.5 GPH @ 58 PSIG
GALA0708 MAX. CAPACITY: 1.9 GPH @ 101 PSIG
GALA0713 MAX. CAPACITY: 2.9 GPH @ 101 PSIG
GALA1005 MAX. CAPACITY: 1.1 GPH @ 145 PSIG
GALA1008 MAX. CAPACITY: 1.8 GPH @ 145 PSIG
GALA1605 MAX. CAPACITY: 1.1 GPH @ 232 PSIG



- NOTES:
- ALL PIPING AND FITTINGS SHALL BE 1/2" SCH. 80 PVC SOCKET WELD WITH VITON SEALS UNLESS OTHERWISE REQUIRED BY COMPONENTS.
 - ALL DIMENSIONS ARE IN INCHES AND ARE SHOWN FOR REFERENCE ONLY.



MAXIMUM TESTING PRESSURE =	150 PSI
MAXIMUM OPERATING PRESSURE =	29-232 PSI
CHEMICAL SERVICE =	

0	01/14/08	FIRST ISSUE		GJS	
REV	DATE	DESCRIPTION		BY	APPD/REV/D
REVISIONS					
CUSTOMER PROMINENT FLUID CONTROLS INC. (PRE-ENGINEERED SYSTEM)					
JOB No		7749140		PURCHASE ORDER No	
TITLE SS2-C_FLOOR_050_PVC/VITON_PD GENERAL ARRANGEMENT					
THIS DRAWING IS THE PROPERTY OF PROMINENT FLUID CONTROLS INC. AND SHALL NOT BE COPIED OR TRANSFERRED WITHOUT THE WRITTEN CONSENT OF PROMINENT FLUID CONTROLS INC.					
ENGINEERS SEAL		<div><div></div><div>ProMinent[®] THE PROMINENT GROUP OF COMPANIES</div></div>			
		PITTSBURGH, PA USA		WWW.PROMINENT.US	
		PROMINENT FLUID CONTROLS LTD. 490 SOUTHGATE DRIVE. GUELPH, ONTARIO, CANADA N1H 6J3 TEL. 519 836 5692 FAX. 519 836 5226		PROMINENT FLUID CONTROLS INC. RIDC PARK WEST 136 INDUSTRY DRIVE, PITTSBURGH P.A., USA. 15275 TEL. 412 787 2484 FAX. 412 787 0704	
		DESIGNED GJS		APPROVED	
		DRAWN GJS		SCALE N.T.S.	
		CHECKED DTH		DATE 01/14/08	
DWG No				REV	PAGE
7749140-200				0	1/1