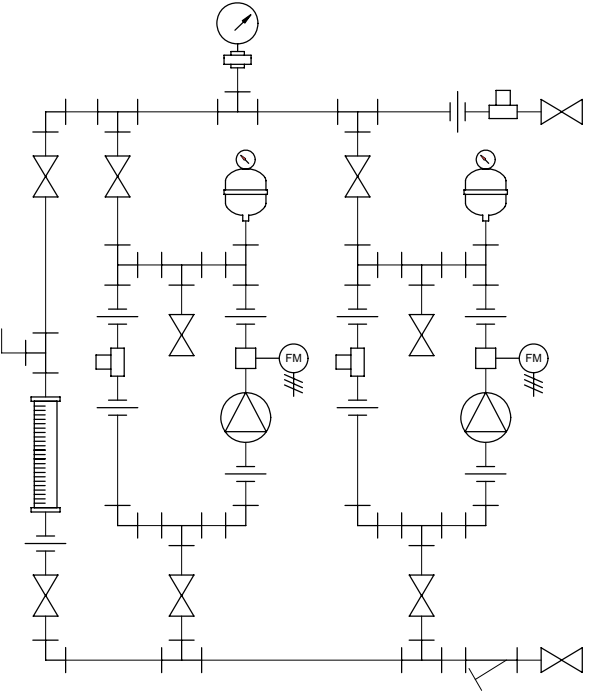
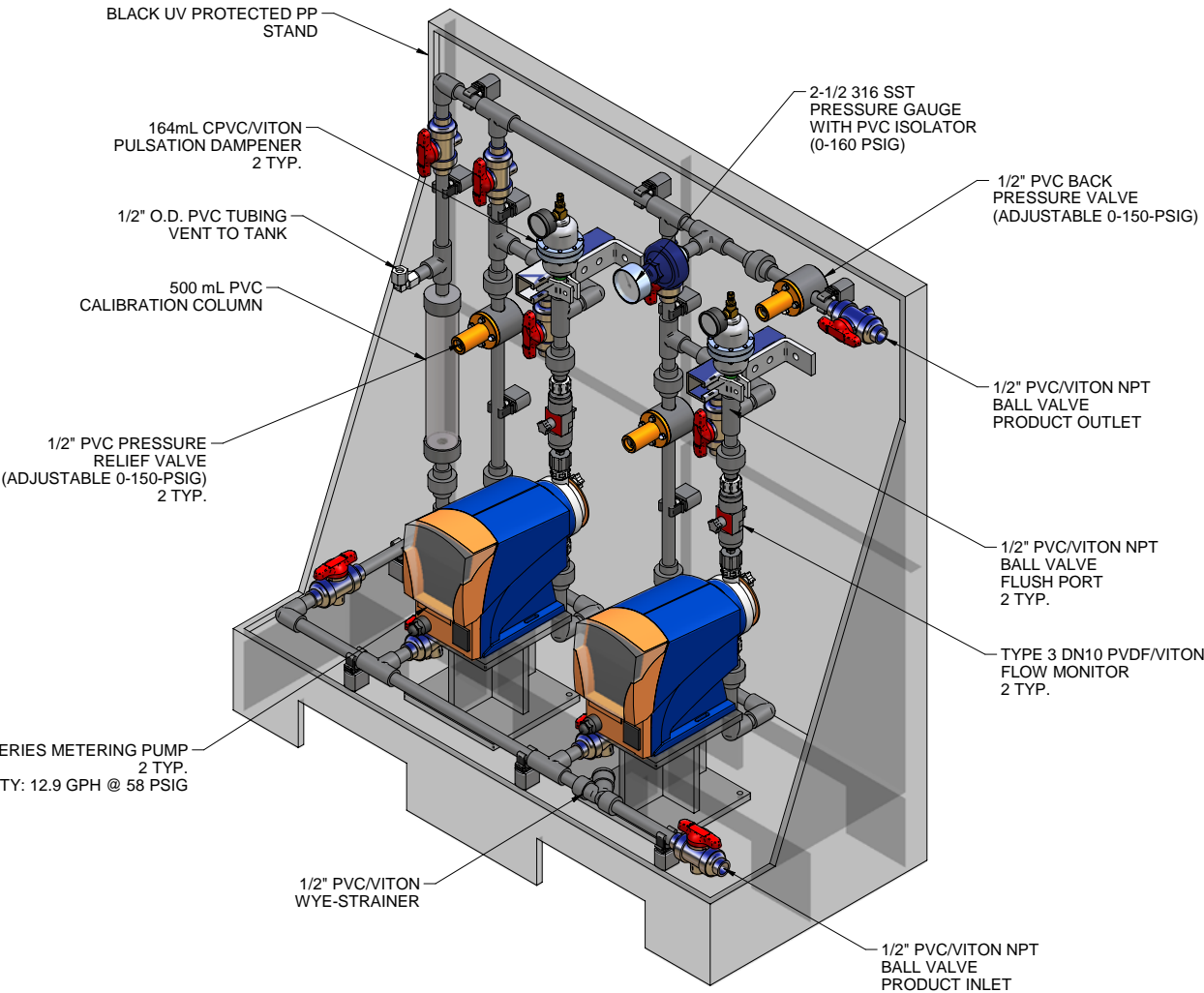
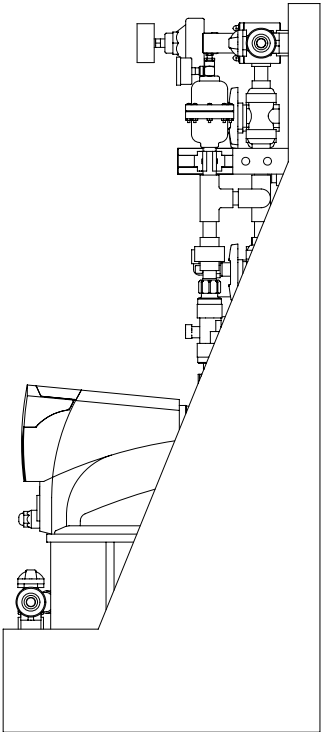
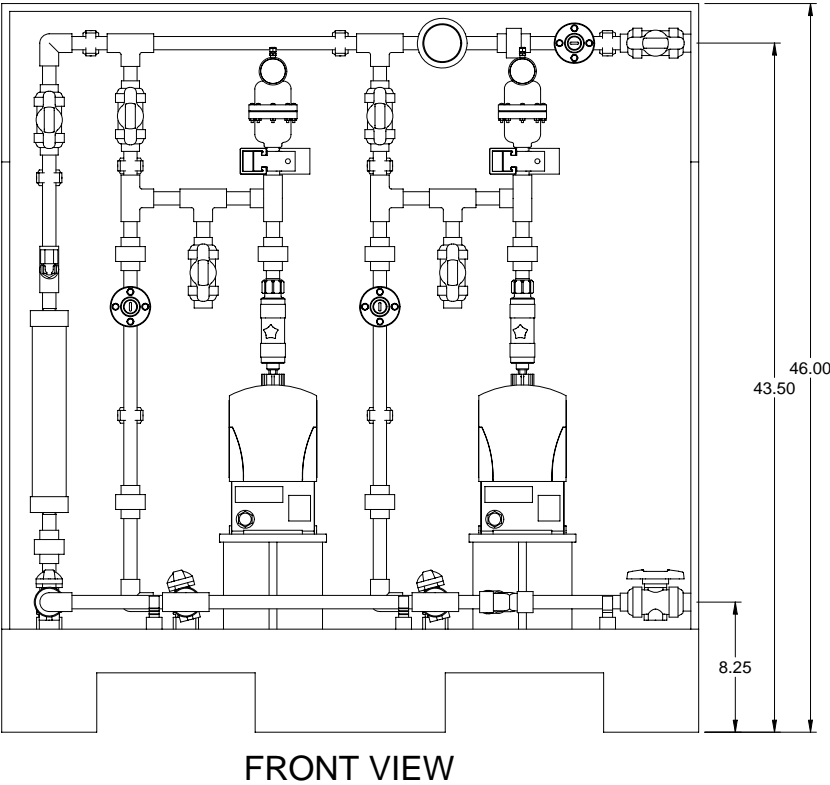


DELTA SERIES METERING PUMP
2 TYP.
DLTA0450 MAX. CAPACITY: 12.9 GPH @ 58 PSIG




PIPING SCHEMATIC

- NOTES:
- ALL PIPING AND FITTINGS SHALL BE 1/2" SCH. 80 PVC SOCKET WELD WITH VITON SEALS UNLESS OTHERWISE REQUIRED BY COMPONENTS.
 - ALL DIMENSIONS ARE IN INCHES AND ARE SHOWN FOR REFERENCE ONLY.



SIDE VIEW

MAXIMUM TESTING PRESSURE =	150 PSI
MAXIMUM OPERATING PRESSURE =	58 PSI
CHEMICAL SERVICE =	

0	01/14/08	FIRST ISSUE		GJS					
REV	DATE	DESCRIPTION		BY	APPD/REV'D				
REVISIONS									
CUSTOMER PROMINENT FLUID CONTROLS INC. (PRE-ENGINEERED SYSTEM)									
JOB No		7749154		PURCHASE ORDER No					
TITLE SS2-F_FLOOR_050_PVC\ITON_PD_FM GENERAL ARRANGEMENT									
THIS DRAWING IS THE PROPERTY OF PROMINENT FLUID CONTROLS INC. AND SHALL NOT BE COPIED OR TRANSFERRED WITHOUT THE WRITTEN CONSENT OF PROMINENT FLUID CONTROLS INC.									
ENGINEERS SEAL		<div><div></div><div><div>ProMinent®</div><div>THE PROMINENT GROUP OF COMPANIES</div></div></div> <div><div>PITTSBURGH, PA USA</div><div>WWW.PROMINENT.US</div><div>PROMINENT FLUID CONTROLS LTD. 490 SOUTHGATE DRIVE. GUELPH, ONTARIO, CANADA N1H 6J3 TEL. 519 836 5692 FAX. 519 836 5226</div><div>PROMINENT FLUID CONTROLS INC. RIDC PARK WEST 136 INDUSTRY DRIVE, PITTSBURGH P.A., USA. 15275 TEL. 412 787 2484 FAX. 412 787 0704</div></div>							
						DESIGNED	GJS	APPROVED	
						DRAWN	GJS	SCALE	N.T.S.
						CHECKED	DTH	DATE	01/14/08
DWG No		7749154-200		REV	PAGE				
				0	1/1				