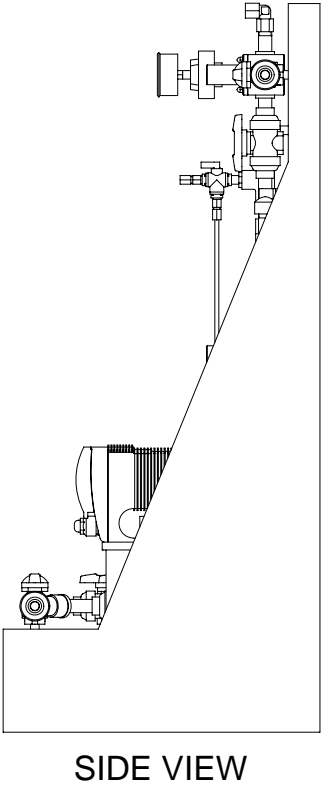
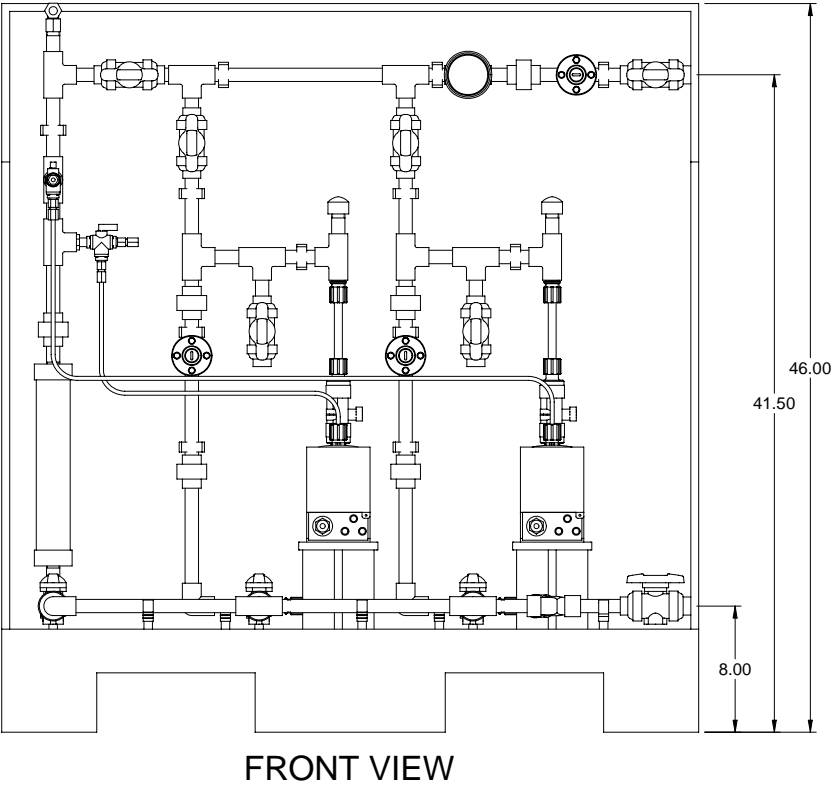



PIPING SCHEMATIC

- NOTES:
- ALL PIPING AND FITTINGS SHALL BE 1/2" SCH. 80 PVC SOCKET WELD WITH EPDM SEALS UNLESS OTHERWISE REQUIRED BY COMPONENTS.
 - ALL DIMENSIONS ARE IN INCHES AND ARE SHOWN FOR REFERENCE ONLY.



SIDE VIEW

MAXIMUM TESTING PRESSURE =	150 PSI
MAXIMUM OPERATING PRESSURE =	29-150 PSI
CHEMICAL SERVICE =	

A	05/14/09	REVISED PER BASIC SKID		GJS													
0	02/04/08	FIRST ISSUE		GJS													
REV	DATE	DESCRIPTION		BY	APPD/REV'D												
REVISIONS																	
CUSTOMER PROMINENT FLUID CONTROLS INC. (PRE-ENGINEERED SYSTEM)																	
JOB No		7749180		PURCHASE ORDER No													
TITLE SS2-D_FLOOR_050_PVC\EPDM_DEGAS_FM GENERAL ARRANGEMENT																	
THIS DRAWING IS THE PROPERTY OF PROMINENT FLUID CONTROLS INC. AND SHALL NOT BE COPIED OR TRANSFERRED WITHOUT THE WRITTEN CONSENT OF PROMINENT FLUID CONTROLS INC.																	
ENGINEERS SEAL		<div><div></div><div>ProMinent[®] THE PROMINENT GROUP OF COMPANIES</div></div>															
		<div><div>PITTSBURGH, PA USA</div><div>WWW.PROMINENT.US</div><div><div>PROMINENT FLUID CONTROLS LTD. 490 SOUTHGATE DRIVE. GUELPH, ONTARIO, CANADA N1H 6J3 TEL. 519 836 5692 FAX. 519 836 5226</div><div><div>PROMINENT FLUID CONTROLS INC. RIDC PARK WEST 136 INDUSTRY DRIVE, PITTSBURGH P.A., USA. 15275 TEL. 412 787 2484 FAX. 412 787 0704</div></div></div></div>															
		<table><tr><td>DESIGNED</td><td>GJS</td><td>APPROVED</td><td></td></tr><tr><td>DRAWN</td><td>GJS</td><td>SCALE</td><td>N.T.S.</td></tr><tr><td>CHECKED</td><td>DTH</td><td>DATE</td><td>02/04/08</td></tr></table>				DESIGNED	GJS	APPROVED		DRAWN	GJS	SCALE	N.T.S.	CHECKED	DTH	DATE	02/04/08
DESIGNED	GJS	APPROVED															
DRAWN	GJS	SCALE	N.T.S.														
CHECKED	DTH	DATE	02/04/08														
DWG No			REV	PAGE													
7749180-200			A	1/1													