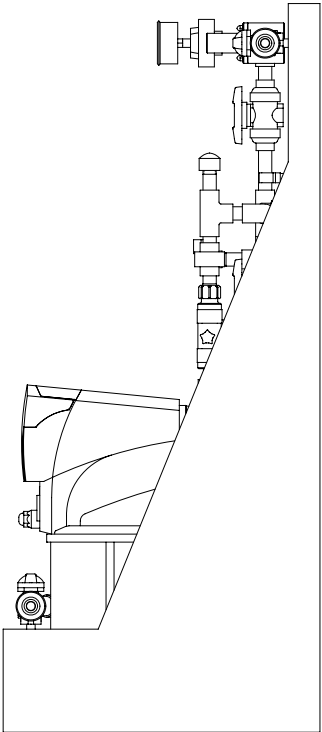
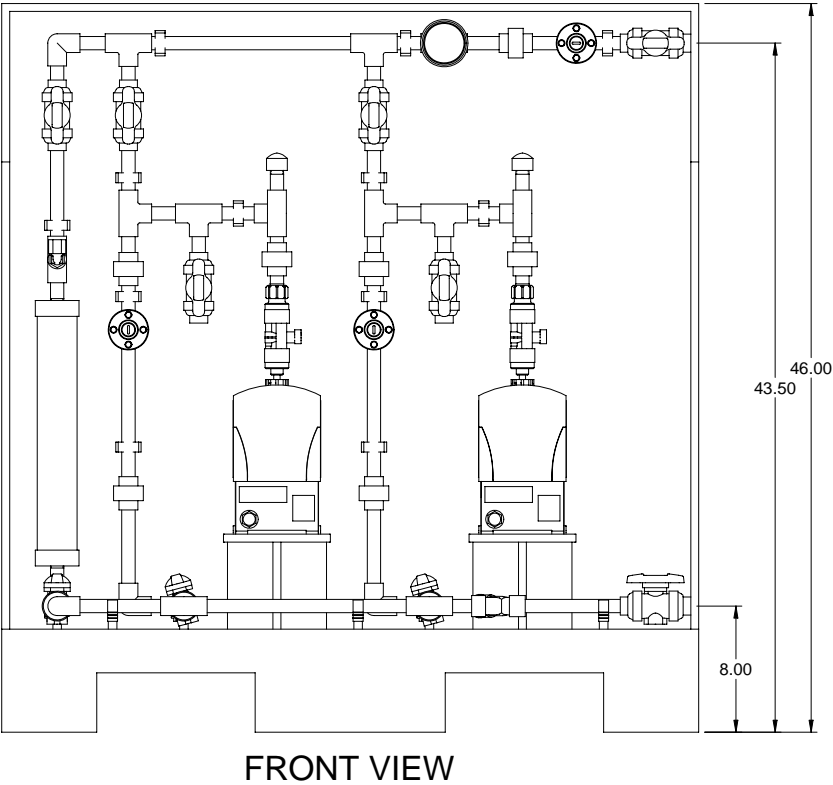


- NOTES:
- ALL PIPING AND FITTINGS SHALL BE 1/2" SCH. 80 PVC SOCKET WELD WITH EPDM SEALS UNLESS OTHERWISE REQUIRED BY COMPONENTS.
 - ALL DIMENSIONS ARE IN INCHES AND ARE SHOWN FOR REFERENCE ONLY.



MAXIMUM TESTING PRESSURE =	150 PSI
MAXIMUM OPERATING PRESSURE =	29 PSI
CHEMICAL SERVICE =	

A	05/14/09	REVISED PER BASIC SKID		GJS	
0	02/04/08	FIRST ISSUE		GJS	
REV	DATE	DESCRIPTION		BY	APPD/REV
REVISIONS					
CUSTOMER PROMINENT FLUID CONTROLS INC. (PRE-ENGINEERED SYSTEM)					
JOB No		7749203		PURCHASE ORDER No	
TITLE SS2-G_FLOOR_050_PVC\EPDM_FM GENERAL ARRANGEMENT					
THIS DRAWING IS THE PROPERTY OF PROMINENT FLUID CONTROLS INC. AND SHALL NOT BE COPIED OR TRANSFERRED WITHOUT THE WRITTEN CONSENT OF PROMINENT FLUID CONTROLS INC.					
ENGINEERS SEAL		<div><div><div>ptc</div><div>ProMinent</div></div><div><div>ProMinent[®]</div><div>THE PROMINENT GROUP OF COMPANIES</div></div></div>			
PITTSBURGH, PA USA		WWW.PROMINENT.US			
PROMINENT FLUID CONTROLS LTD. 490 SOUTHGATE DRIVE. GUELPH, ONTARIO, CANADA N1H 6J3 TEL. 519 836 5692 FAX. 519 836 5226		PROMINENT FLUID CONTROLS INC. RIDC PARK WEST 136 INDUSTRY DRIVE, PITTSBURGH P.A., USA. 15275 TEL. 412 787 2484 FAX. 412 787 0704			
DESIGNED GJS		APPROVED			
DRAWN GJS		SCALE N.T.S.			
CHECKED DTH		DATE 02/04/08			
DWG No			REV	PAGE	
7749203-200			A	1/1	