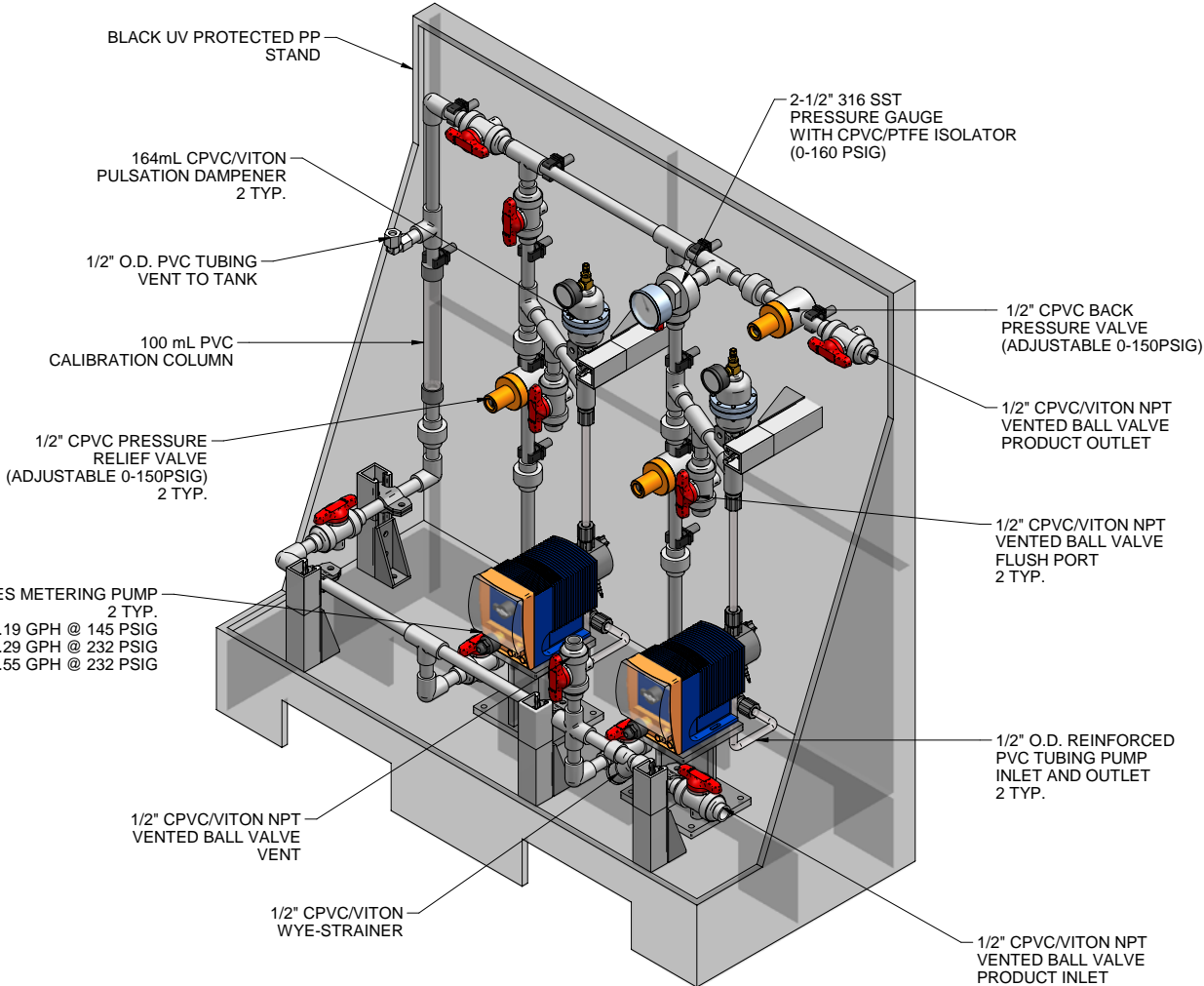
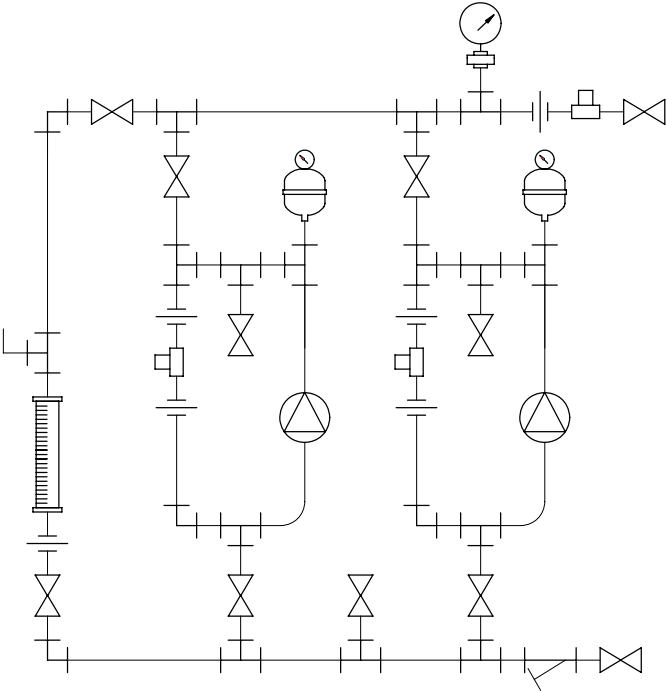
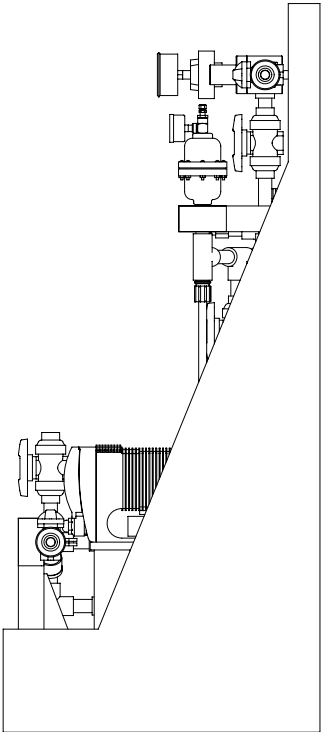
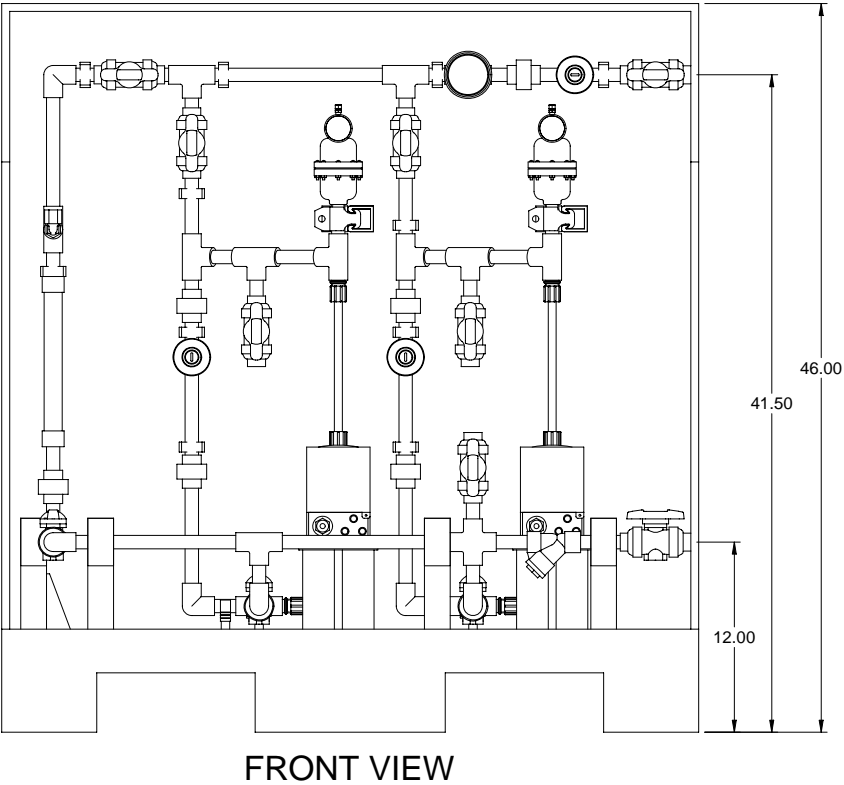


GAMMA L SERIES METERING PUMP
2 TYP.
GALA1000 MAX. CAPACITY: 0.19 GPH @ 145 PSIG
GALA1601 MAX. CAPACITY: 0.29 GPH @ 232 PSIG
GALA1602 MAX. CAPACITY: 0.55 GPH @ 232 PSIG



ISOMETRIC VIEW



- NOTES:
- ALL PIPING AND FITTINGS SHALL BE 1/2" SCH. 80 CPVC SOCKET WELD WITH VITON SEALS UNLESS OTHERWISE REQUIRED BY COMPONENTS.
 - ALL VALVES TO BE VENTED.
 - ALL DIMENSIONS ARE IN INCHES AND ARE SHOWN FOR REFERENCE ONLY.

A	05/14/09	REVISED PER BASIC SKID		GJS	
0	02/11/08	FIRST ISSUE		GJS	
REV	DATE	DESCRIPTION		BY	APPD/REV
REVISIONS					
CUSTOMER PROMINENT FLUID CONTROLS INC. (PRE-ENGINEERED SYSTEM)					
JOB No		7749207		PURCHASE ORDER No	
TITLE SS2-A_FLOOR_050_CPVC/VITON-V_PD GENERAL ARRANGEMENT					
THIS DRAWING IS THE PROPERTY OF PROMINENT FLUID CONTROLS INC. AND SHALL NOT BE COPIED OR TRANSFERRED WITHOUT THE WRITTEN CONSENT OF PROMINENT FLUID CONTROLS INC.					
ENGINEERS SEAL		<div><div><div><div>pfc</div><div>ProMinent</div></div><div><div>ProMinent®</div><div>THE PROMINENT GROUP OF COMPANIES</div></div></div></div>			
		<div><div><div>PITTSBURGH, PA USA</div><div><div>PROMINENT FLUID CONTROLS LTD.</div><div>490 SOUTHGATE DRIVE.</div><div>GUELPH, ONTARIO, CANADA</div><div>N1H 6J3</div><div>TEL. 519 836 5692</div><div>FAX. 519 836 5226</div></div></div><div><div>WWW.PROMINENT.US</div><div><div>PROMINENT FLUID CONTROLS INC.</div><div>RIDC PARK WEST</div><div>136 INDUSTRY DRIVE,</div><div>PITTSBURGH P.A., USA. 15275</div><div>TEL. 412 787 2484</div><div>FAX. 412 787 0704</div></div></div></div>			
		DESIGNED GJS		APPROVED	
		DRAWN GJS		SCALE N.T.S.	
		CHECKED DTH		DATE 02/11/08	
DWG No				REV	PAGE
7749209-200				A	1/1