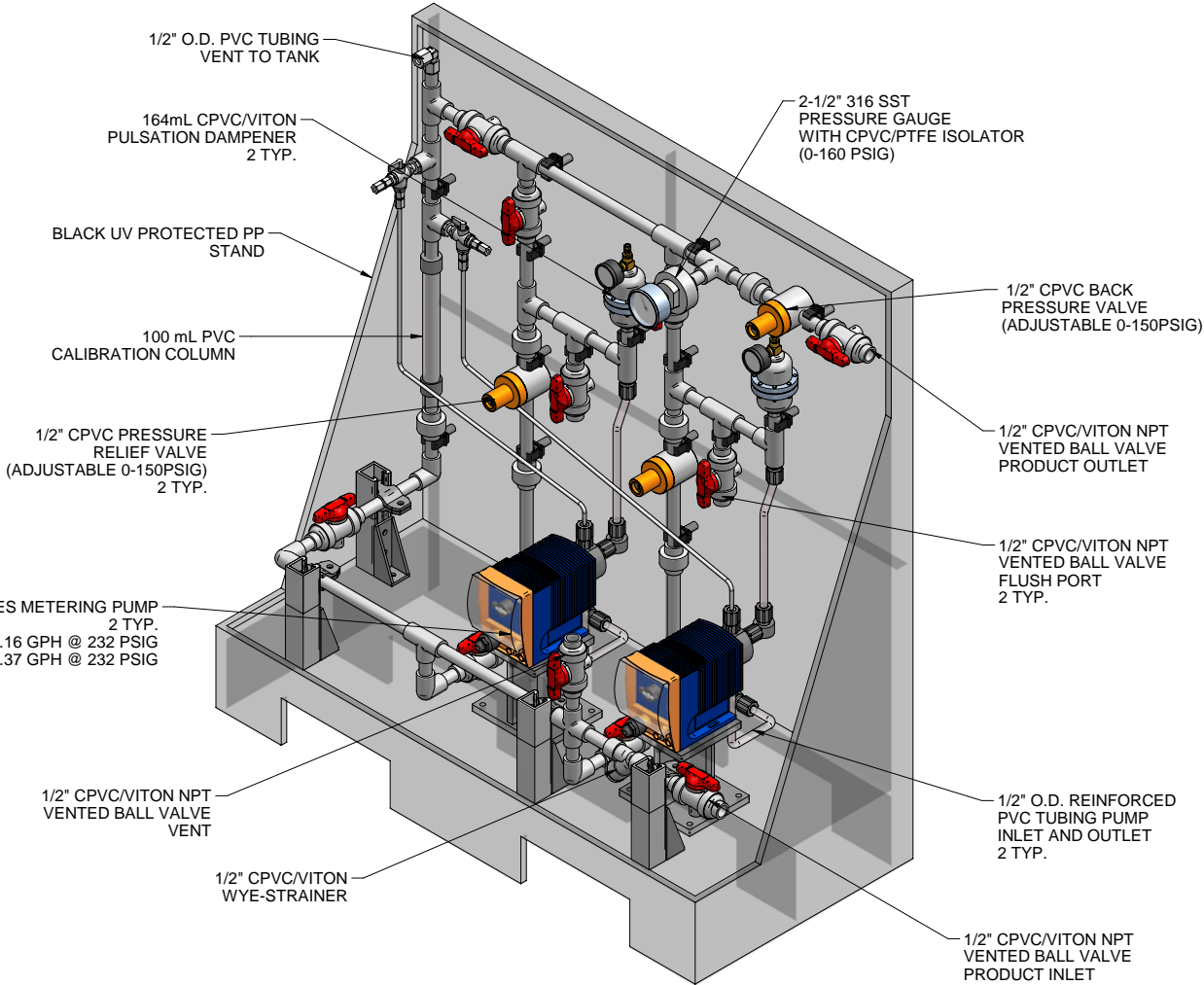
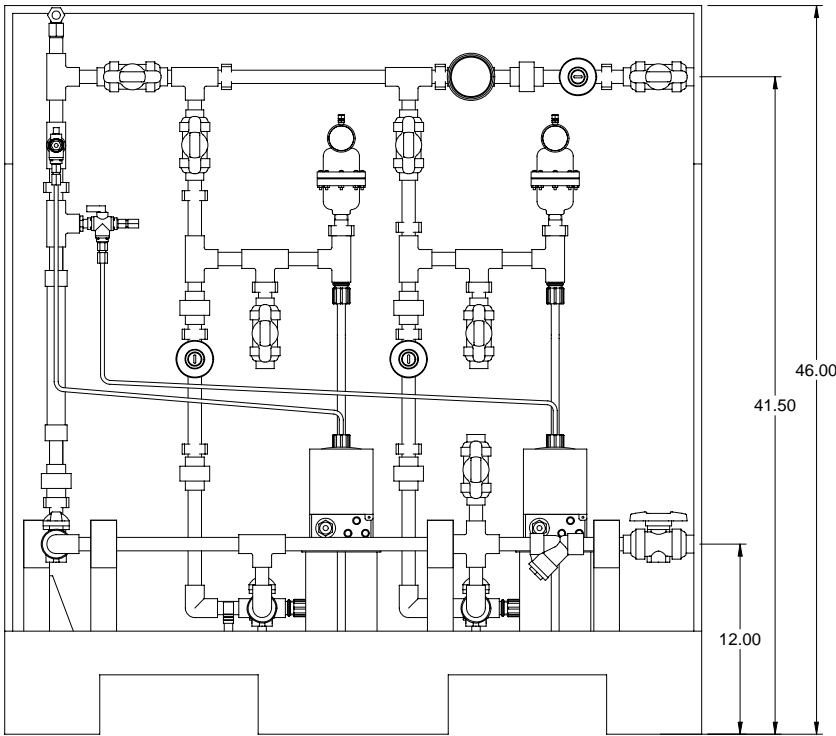


PLAN VIEW

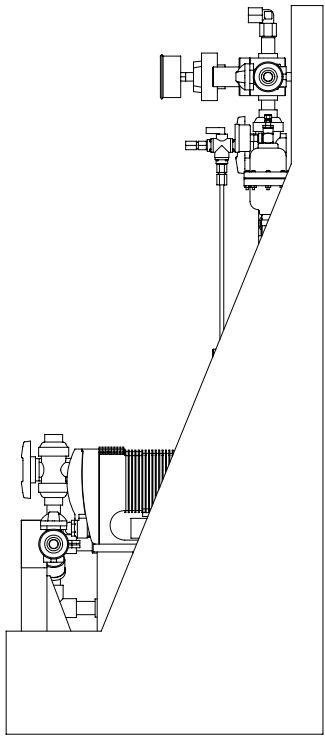
GAMMA L SERIES METERING PUMP  
2 TYP.  
GALA1601 MAX. CAPACITY: 0.16 GPH @ 232 PSIG  
GALA1602 MAX. CAPACITY: 0.37 GPH @ 232 PSIG



ISOMETRIC VIEW

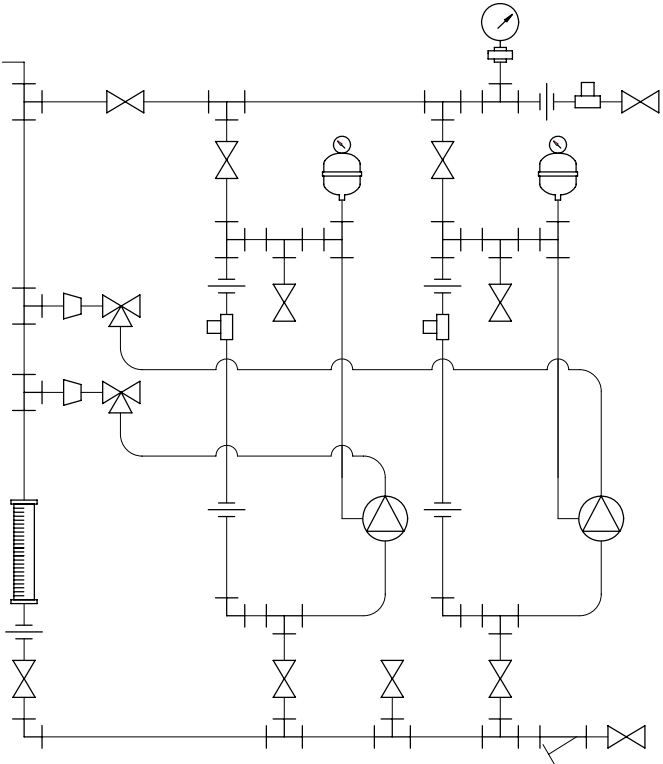


FRONT VIEW



SIDE VIEW

MAXIMUM TESTING PRESSURE =	150 PSI
MAXIMUM OPERATING PRESSURE =	150 PSI
CHEMICAL SERVICE =	



PIPING SCHEMATIC

- NOTES:
- ALL PIPING AND FITTINGS SHALL BE 1/2" SCH. 80 CPVC SOCKET WELD WITH VITON SEALS UNLESS OTHERWISE REQUIRED BY COMPONENTS.
  - ALL VALVES TO BE VENTED.
  - ALL DIMENSIONS ARE IN INCHES AND ARE SHOWN FOR REFERENCE ONLY.

A	05/14/09	REVISED PER BASIC SKID		GJS	
0	02/11/08	FIRST ISSUE		GJS	
REV	DATE	DESCRIPTION		BY	APPD REV
REVISIONS					
CUSTOMER <b>PROMINENT FLUID CONTROLS INC. (PRE-ENGINEERED SYSTEM)</b>					
JOB No		7749210		PURCHASE ORDER No	
TITLE <b>SS2-B_FLOOR_050_CPVC\VITON-V_DEGAS_PD GENERAL ARRANGEMENT</b>					
THIS DRAWING IS THE PROPERTY OF PROMINENT FLUID CONTROLS INC. AND SHALL NOT BE COPIED OR TRANSFERRED WITHOUT THE WRITTEN CONSENT OF PROMINENT FLUID CONTROLS INC.					
ENGINEERS SEAL		<div><div><div>ptc</div><div>ProMinent</div></div><div><div>ProMinent®</div><div>THE PROMINENT GROUP OF COMPANIES</div></div></div>			
PITTSBURGH, PA USA		WWW.PROMINENT.US			
PROMINENT FLUID CONTROLS LTD. 490 SOUTHGATE DRIVE. GUELPH, ONTARIO, CANADA N1H 6J3 TEL. 519 836 5692 FAX. 519 836 5226		PROMINENT FLUID CONTROLS INC. RIDC PARK WEST 136 INDUSTRY DRIVE, PITTSBURGH P.A., USA. 15275 TEL. 412 787 2484 FAX. 412 787 0704			
DESIGNED <b>GJS</b>		APPROVED			
DRAWN <b>GJS</b>		SCALE <b>N.T.S.</b>			
CHECKED <b>DTH</b>		DATE <b>02/11/08</b>			
DWG No			REV		PAGE
7749210-200			A		1/1