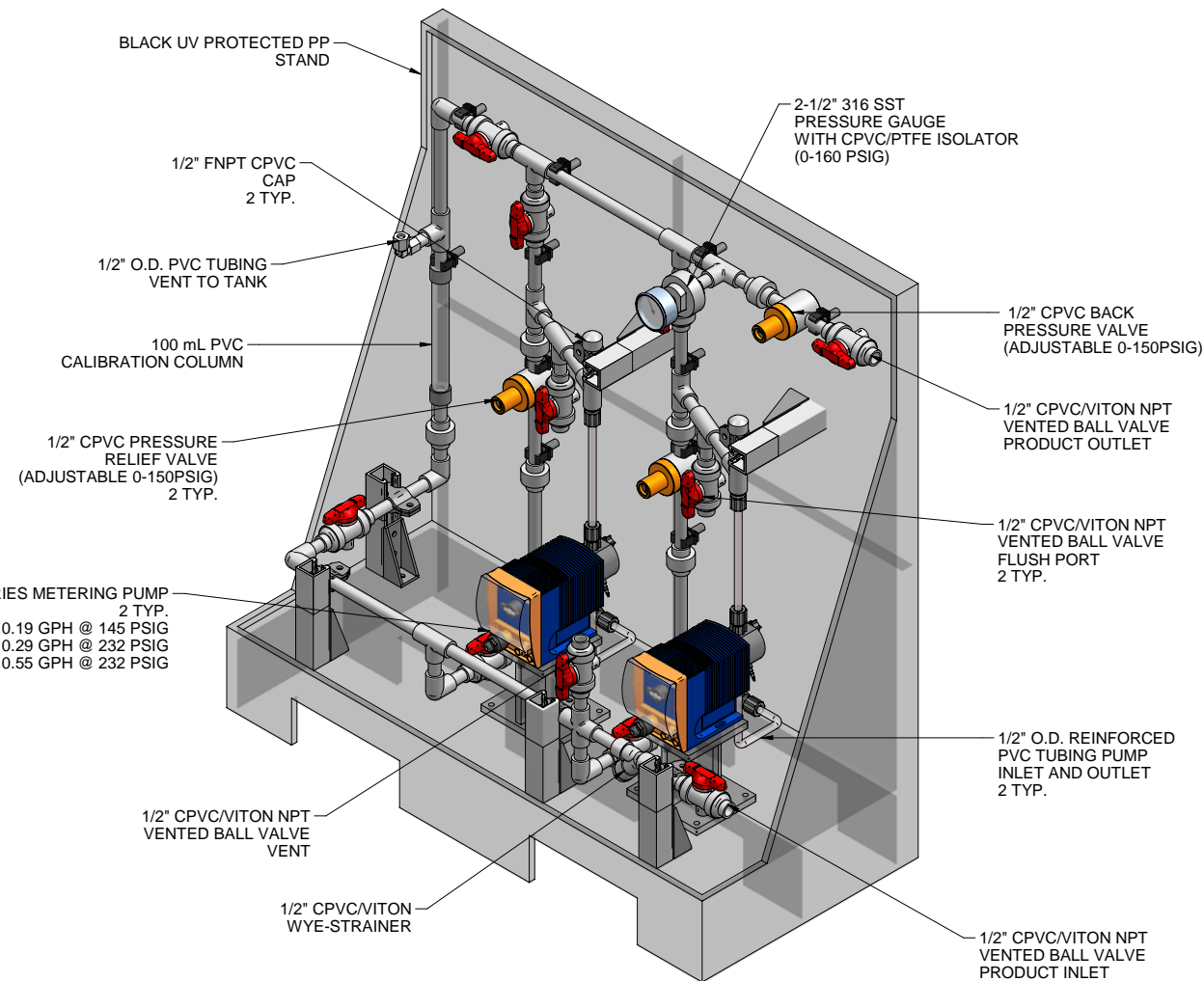
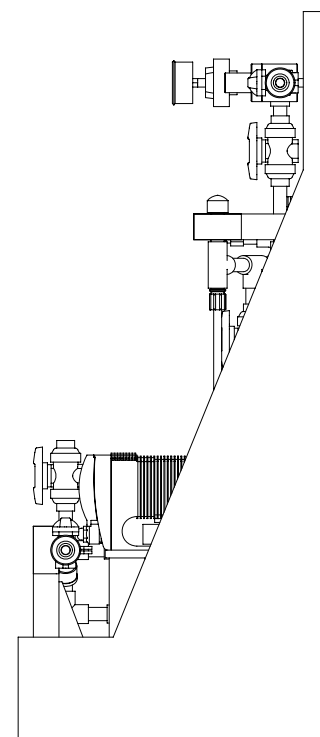
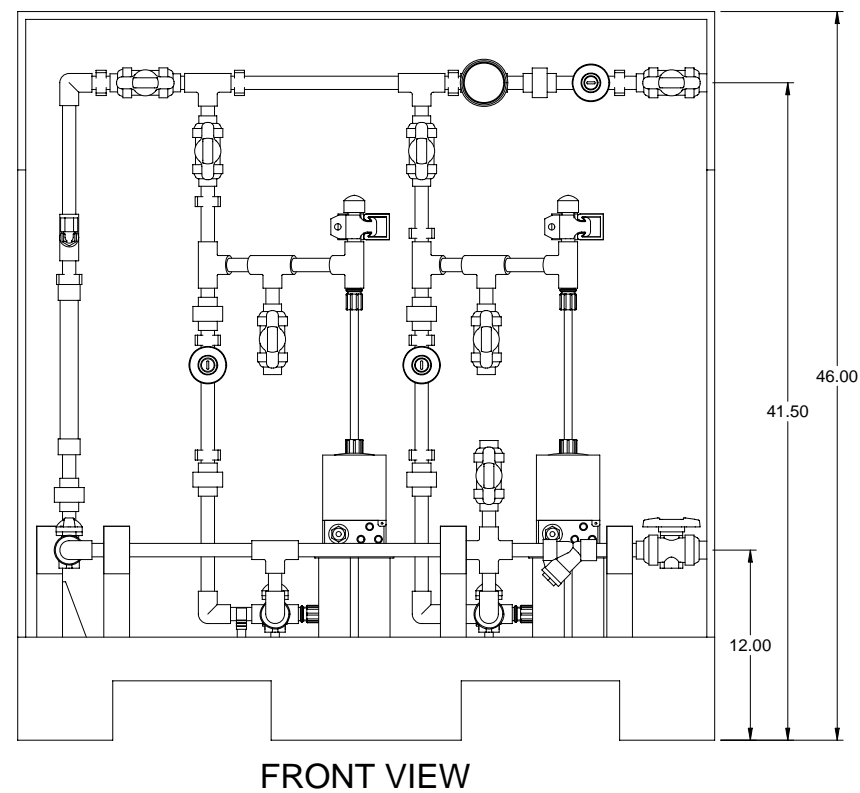


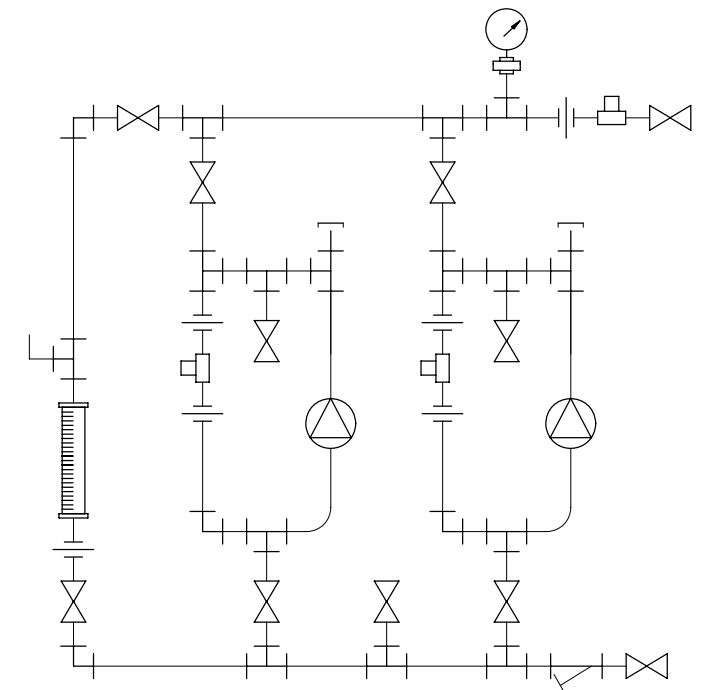
GAMMA L SERIES METERING PUMP
2 TYP.
GALA1000 MAX. CAPACITY: 0.19 GPH @ 145 PSIG
GALA1601 MAX. CAPACITY: 0.29 GPH @ 232 PSIG
GALA1602 MAX. CAPACITY: 0.55 GPH @ 232 PSIG



ISOMETRIC VIEW



SIDE VIEW



PIPING SCHEMATIC

NOTES:

1. ALL PIPING AND FITTINGS SHALL BE 1/2" SCH. 80 CPVC SOCKET WELD WITH VITON SEALS UNLESS OTHERWISE REQUIRED BY COMPONENTS.
2. ALL VALVES TO BE VENTED.
3. ALL DIMENSIONS ARE IN INCHES AND ARE SHOWN FOR REFERENCE ONLY.

A	05/14/09	REVISED PER BASIC SKID	GJS		
0	02/11/08	FIRST ISSUE	GJS		
REV	DATE	DESCRIPTION	BY	APPD	REVD



REVISIONS

CUSTOMER **PROMINENT FLUID CONTROLS INC.**
(PRE-ENGINEERED SYSTEM)

JOB No	7749213	PURCHASE ORDER No
--------	---------	-------------------

TITLE	SS2-A_FLOOR_050_CPVC\ITON-V_PD GENERAL ARRANGEMENT
-------	---

THIS DRAWING IS THE PROPERTY OF PROMINENT FLUID CONTROLS INC. AND SHALL NOT BE COPIED OR TRANSFERRED WITHOUT THE WRITTEN CONSENT OF PROMINENT FLUID CONTROLS INC.

ENGINEERS SEAL	 	
	<div> <div>PITTSBURGH, PA USA</div> <div> PROMINENT FLUID CONTROLS LTD. 490 SOUTHGATE DRIVE. GUELPH, ONTARIO, CANADA N1H 6J3 TEL. 519 836 5692 FAX. 519 836 5226 </div> </div>	
	<div> <div>WWW.PROMINENT.US</div> <div> PROMINENT FLUID CONTROLS INC. RIDC PARK WEST 136 INDUSTRY DRIVE, PITTSBURGH P.A., USA. 15275 TEL. 412 787 2484 FAX. 412 787 0704 </div> </div>	
	DESIGNED	GJS
	DRAWN	GJS
	CHECKED	DTH
	APPROVED	
	SCALE	N.T.S.
	DATE	02/11/08

MAXIMUM TESTING PRESSURE =	150 PSI
MAXIMUM OPERATING PRESSURE =	145-150 PSI
CHEMICAL SERVICE =	

	DWG No
--	--------

7749213-200

REV
A

PAGE
1/1