

PLAN VIEW

IT IS CRITICAL THAT THE FITTING ON THE BACK OF THE SKID AND THE FITTING ON THE FLOOR OF THE SKID LINE UP CORRECTLY.
A CALIBRATION COLUMN WILL BE ADDED IN THE FUTURE
THE PIPE IS SHOWN FOR REFERENCE ONLY AND IS NOT BE GLUED.

1/2" CPVC PRESSURE RELIEF VALVE (ADJUSTABLE 0-150PSIG)

1/2" CPVC BACK PRESSURE VALVE (ADJUSTABLE 0-150PSIG)

1/2" CPVC/VITON NPT VENTED BALL VALVE PRODUCT OUTLET
2-1/2" 316 SST PRESSURE GAUGE WITH CPVC/PTFE ISOLATOR (0-160 PSIG)

1/2" CPVC/VITON NPT VENTED BALL VALVE FLUSH PORT

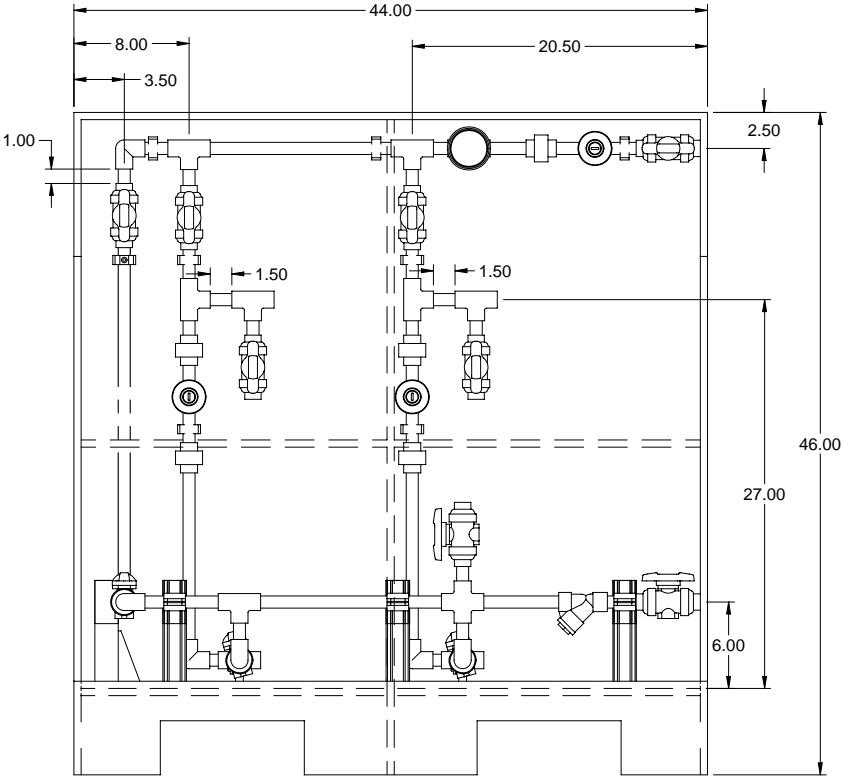
BLACK UV PROTECTED PP STAND

1/2" CPVC/VITON NPT VENTED BALL VALVE VENT

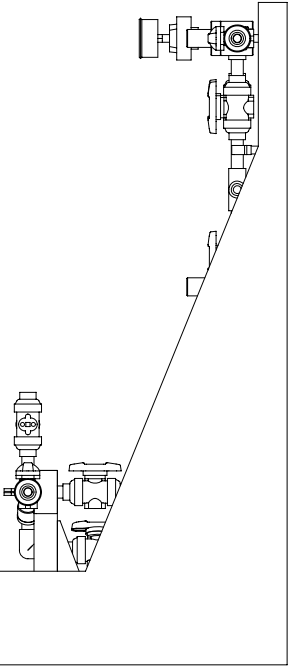
1/2" CPVC/VITON WYE-STRAINER

1/2" CPVC/VITON NPT VENTED BALL VALVE PRODUCT INLET

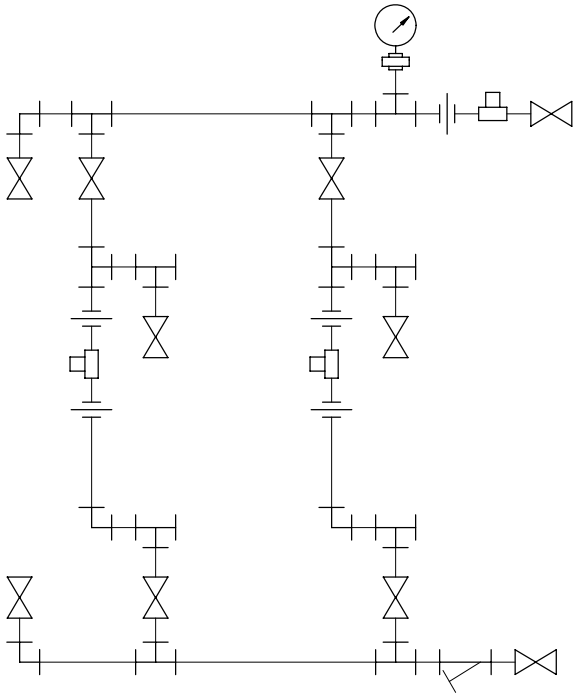
ISOMETRIC VIEW



FRONT VIEW




SIDE VIEW



PIPING SCHEMATIC

- NOTES:
1. ALL PIPING AND FITTINGS SHALL BE 1/2" SCH. 80 CPVC SOCKET WELD WITH VITON SEALS UNLESS OTHERWISE REQUIRED BY COMPONENTS.
 2. ALL VALVES TO BE VENTED.
 3. ALL DIMENSIONS ARE IN INCHES AND ARE SHOWN FOR REFERENCE ONLY.

0	12/22/08	FIRST ISSUE		GJS	
REV	DATE	DESCRIPTION		BY	APPD REV
REVISIONS					
CUSTOMER PROMINENT FLUID CONTROLS INC. (PRE-ENGINEERED SYSTEM)					
JOB No		7749225		PURCHASE ORDER No N/A	
TITLE SS2-E-F-G_FLOOR_050_CPVC\ITON-V BASIC SKID GENERAL ARRANGEMENT					
THIS DRAWING IS THE PROPERTY OF PROMINENT FLUID CONTROLS INC. AND SHALL NOT BE COPIED OR TRANSFERRED WITHOUT THE WRITTEN CONSENT OF PROMINENT FLUID CONTROLS INC.					
ENGINEERS SEAL		<div><div></div><div>ProMinent[®] THE PROMINENT GROUP OF COMPANIES</div></div>			
		<div><div>PITTSBURGH, PA USA</div><div>WWW.PROMINENT.US</div><div><div>PROMINENT FLUID CONTROLS LTD. 490 SOUTHGATE DRIVE. GUELPH, ONTARIO, CANADA N1H 6J3 TEL. 519 836 5692 FAX. 519 836 5226</div><div><div>PROMINENT FLUID CONTROLS INC. RIDC PARK WEST 136 INDUSTRY DRIVE, PITTSBURGH P.A., USA. 15275 TEL. 412 787 2484 FAX. 412 787 0704</div></div></div></div>			
DESIGNED		GJS		APPROVED	
DRAWN		GJS		SCALE N.T.S.	
CHECKED		JMS		DATE 12/22/08	
DWG No				REV	PAGE
7749225-200				0	1/1

MAXIMUM TESTING PRESSURE =	0 PSI
MAXIMUM OPERATING PRESSURE =	0 PSI
CHEMICAL SERVICE =	N/A