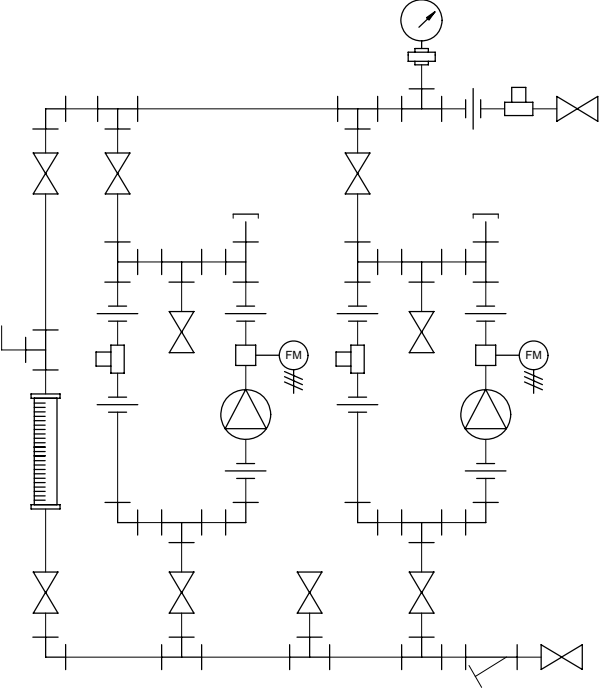
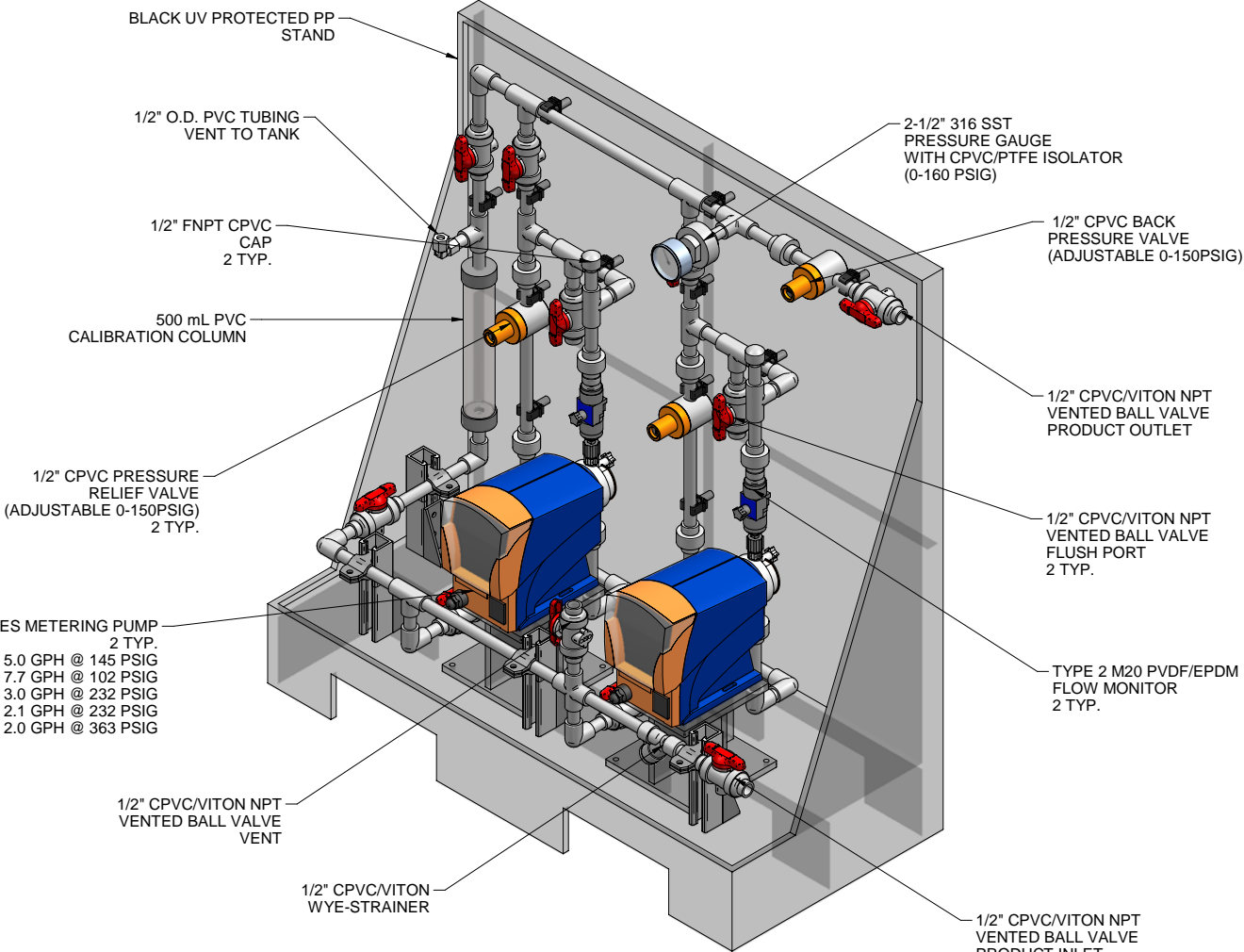
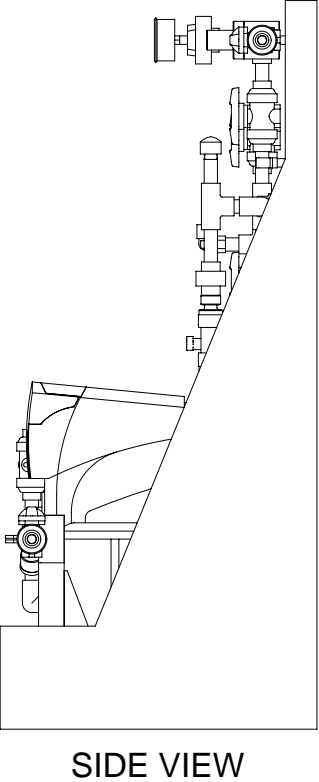
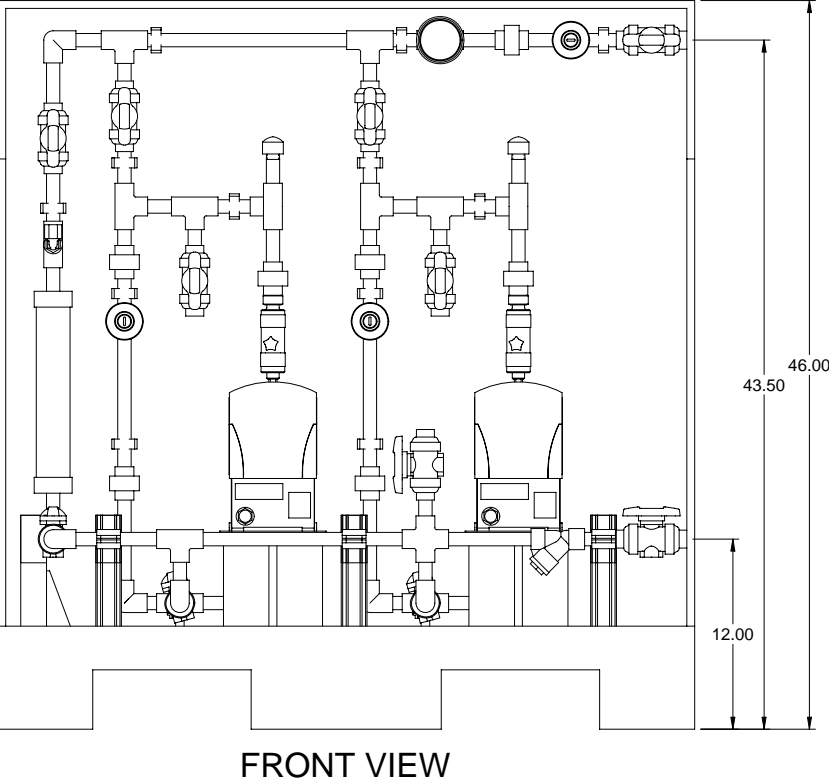



DELTA SERIES METERING PUMP  
2 TYP.  
DLTA1020 MAX. CAPACITY: 5.0 GPH @ 145 PSIG  
DLTA0730 MAX. CAPACITY: 7.7 GPH @ 102 PSIG  
DLTA1612 MAX. CAPACITY: 3.0 GPH @ 232 PSIG  
DLTA1608 MAX. CAPACITY: 2.1 GPH @ 232 PSIG  
DLTA2508 MAX. CAPACITY: 2.0 GPH @ 363 PSIG



- NOTES:
- ALL PIPING AND FITTINGS SHALL BE 1/2" SCH. 80 CPVC SOCKET WELD WITH VITON SEALS UNLESS OTHERWISE REQUIRED BY COMPONENTS.
  - ALL VALVES TO BE VENTED.
  - ALL DIMENSIONS ARE IN INCHES AND ARE SHOWN FOR REFERENCE ONLY.



MAXIMUM TESTING PRESSURE = 150 PSI  
MAXIMUM OPERATING PRESSURE = 102-150 PSI  
CHEMICAL SERVICE =

A	05/14/09	REVISED PER BASIC SKID		GJS	
0	02/11/08	FIRST ISSUE		GJS	
REV	DATE	DESCRIPTION		BY	APPD/REV'D
REVISIONS					
CUSTOMER <b>PROMINENT FLUID CONTROLS INC. (PRE-ENGINEERED SYSTEM)</b>					
JOB No		7749229		PURCHASE ORDER No	
TITLE <b>SS2-E_FLOOR_050_CPVC/VITON-V_FM GENERAL ARRANGEMENT</b>					
THIS DRAWING IS THE PROPERTY OF PROMINENT FLUID CONTROLS INC. AND SHALL NOT BE COPIED OR TRANSFERRED WITHOUT THE WRITTEN CONSENT OF PROMINENT FLUID CONTROLS INC.					
ENGINEERS SEAL		<div><div></div><div><b>ProMinent</b><sup>®</sup> THE PROMINENT GROUP OF COMPANIES</div></div>			
		<div><div>PITTSBURGH, PA USA</div><div>WWW.PROMINENT.US</div><div><div>PROMINENT FLUID CONTROLS LTD. 490 SOUTHGATE DRIVE. GUELPH, ONTARIO, CANADA N1H 6J3 TEL. 519 836 5692FAX. 519 836 5226</div><div>PROMINENT FLUID CONTROLS INC. RIDC PARK WEST 136 INDUSTRY DRIVE, PITTSBURGH P.A., USA. 15275 TEL. 412 787 2484FAX. 412 787 0704</div></div></div>			
DESIGNED		GJS		APPROVED	
DRAWN		GJS		SCALE N.T.S.	
CHECKED		DTH		DATE 02/11/08	
DWG No				REV	PAGE
7749229-200				A	1/1