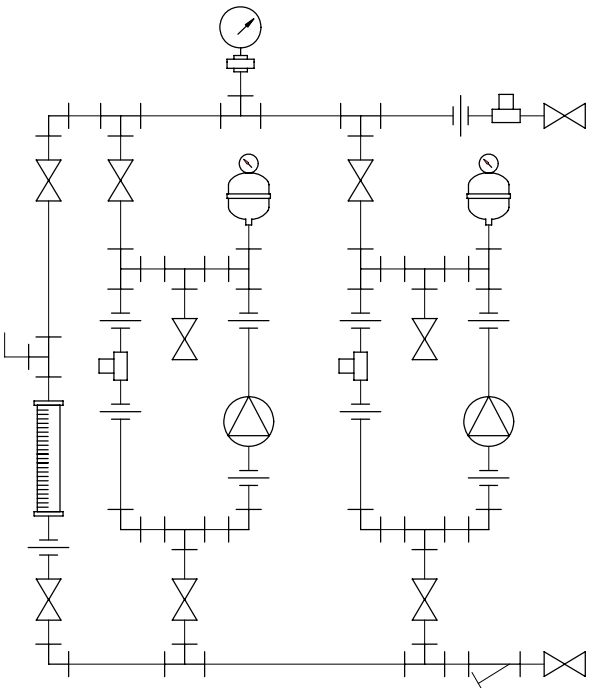
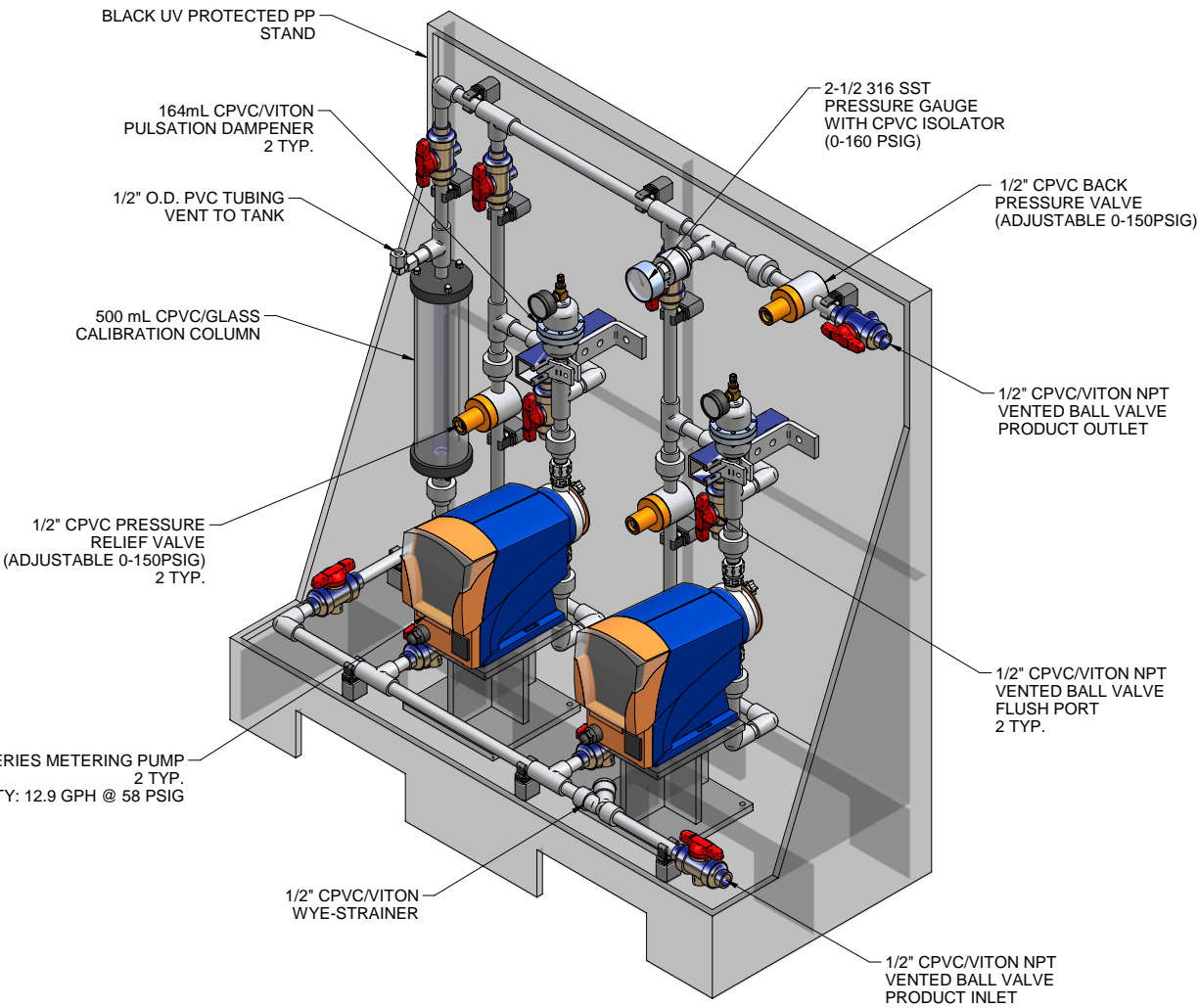
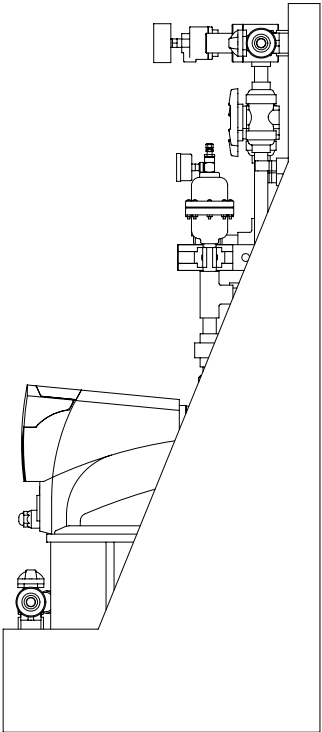
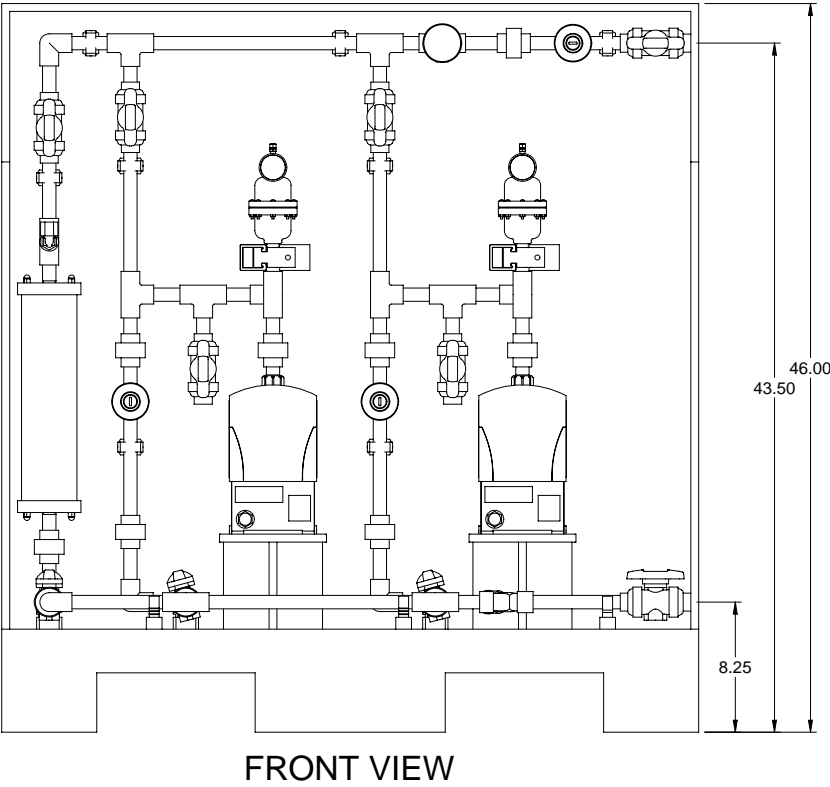


DELTA SERIES METERING PUMP
2 TYP.
DLTA0450 MAX. CAPACITY: 12.9 GPH @ 58 PSIG




PIPING SCHEMATIC

- NOTES:
- 1. ALL PIPING AND FITTINGS SHALL BE 1/2" SCH. 80 CPVC SOCKET WELD WITH EPDM SEALS UNLESS OTHERWISE REQUIRED BY COMPONENTS.
 - 2. ALL VALVES TO BE VENTED.
 - 3. ALL DIMENSIONS ARE IN INCHES AND ARE SHOWN FOR REFERENCE ONLY.



SIDE VIEW

MAXIMUM TESTING PRESSURE =	150 PSI
MAXIMUM OPERATING PRESSURE =	58 PSI
CHEMICAL SERVICE =	

0	02/11/08	FIRST ISSUE		GJS	
REV	DATE	DESCRIPTION		BY	APPD/REV'D
REVISIONS					
CUSTOMER PROMINENT FLUID CONTROLS INC. (PRE-ENGINEERED SYSTEM)					
JOB No		7749234		PURCHASE ORDER No	
TITLE SS2-F_FLOOR_050_CPVC/VITON-V_PD GENERAL ARRANGEMENT					
THIS DRAWING IS THE PROPERTY OF PROMINENT FLUID CONTROLS INC. AND SHALL NOT BE COPIED OR TRANSFERRED WITHOUT THE WRITTEN CONSENT OF PROMINENT FLUID CONTROLS INC.					
ENGINEERS SEAL		<div><div></div><div><div>ProMinent®</div><div>THE PROMINENT GROUP OF COMPANIES</div></div></div> <div><div>PITTSBURGH, PA USA</div><div>WWW.PROMINENT.US</div><div><div><div>PROMINENT FLUID CONTROLS LTD. 490 SOUTHGATE DRIVE. GUELPH, ONTARIO, CANADA N1H 6J3 TEL. 519 836 5692 FAX. 519 836 5226</div><div><div>PROMINENT FLUID CONTROLS INC. RIDC PARK WEST 136 INDUSTRY DRIVE, PITTSBURGH P.A., USA. 15275 TEL. 412 787 2484 FAX. 412 787 0704</div></div></div><div><div>DESIGNED GJS</div><div>APPROVED</div></div><div><div>DRAWN GJS</div><div>SCALE N.T.S.</div></div><div><div>CHECKED DTH</div><div>DATE 02/11/08</div></div></div></div>			
DWG No		REV		PAGE	
7749234-200		0		1/1	