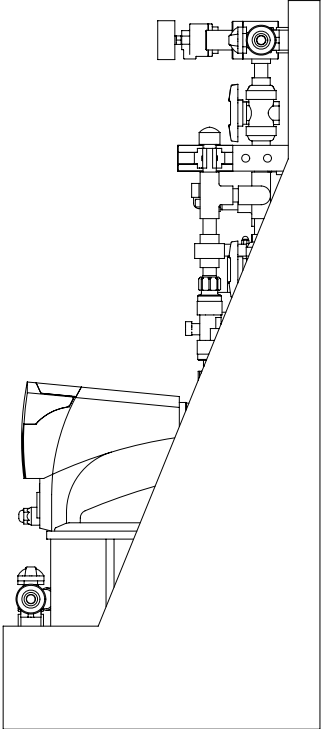
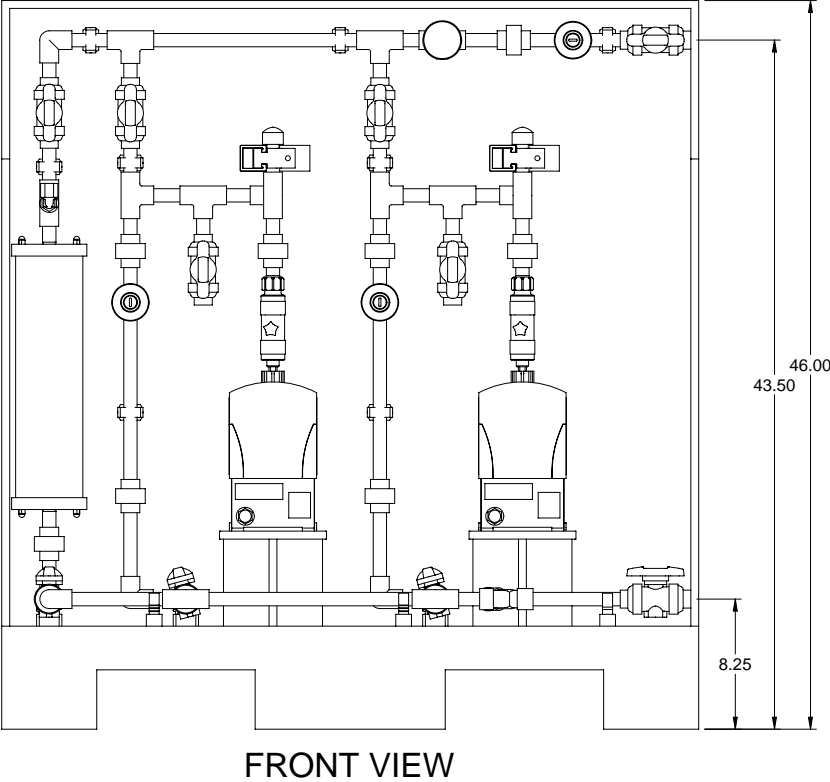


- NOTES:
1. ALL PIPING AND FITTINGS SHALL BE 1/2" SCH. 80 CPVC SOCKET WELD WITH EPDM SEALS UNLESS OTHERWISE REQUIRED BY COMPONENTS.
 2. ALL VALVES TO BE VENTED.
 3. ALL DIMENSIONS ARE IN INCHES AND ARE SHOWN FOR REFERENCE ONLY.



| | |
|------------------------------|---------|
| MAXIMUM TESTING PRESSURE = | 150 PSI |
| MAXIMUM OPERATING PRESSURE = | 29 PSI |
| CHEMICAL SERVICE = | |

| | | | | | |
|---|----------|---|--|----------------------|------------|
| | | | | | |
| 0 | 02/11/08 | FIRST ISSUE | | GJS | |
| REV | DATE | DESCRIPTION | | BY | APPD/REV/D |
| REVISIONS | | | | | |
| CUSTOMER PROMINENT FLUID CONTROLS INC. (PRE-ENGINEERED SYSTEM) | | | | | |
| JOB No | | 7749241 | | PURCHASE ORDER No | |
| TITLE SS2-G_FLOOR_050_CPVC/VITON-V_FM GENERAL ARRANGEMENT | | | | | |
| THIS DRAWING IS THE PROPERTY OF PROMINENT FLUID CONTROLS INC. AND SHALL NOT BE COPIED OR TRANSFERRED WITHOUT THE WRITTEN CONSENT OF PROMINENT FLUID CONTROLS INC. | | | | | |
| ENGINEERS SEAL | | <div><div><div><div>pfc</div><div>ProMinent</div></div><div><div>ProMinent®</div><div>THE PROMINENT GROUP OF COMPANIES</div></div></div></div> | | | |
| | | <div><div><div>PITTSBURGH, PA USA</div><div>PROMINENT FLUID CONTROLS LTD. 490 SOUTHGATE DRIVE. GUELPH, ONTARIO, CANADA N1H 6J3 TEL. 519 836 5692 FAX. 519 836 5226</div></div><div><div>WWW.PROMINENT.US</div><div>PROMINENT FLUID CONTROLS INC. RIDC PARK WEST 136 INDUSTRY DRIVE, PITTSBURGH P.A., USA. 15275 TEL. 412 787 2484 FAX. 412 787 0704</div></div></div> | | | |
| | | DESIGNED GJS | | APPROVED | |
| | | DRAWN GJS | | SCALE N.T.S. | |
| | | CHECKED DTH | | DATE 02/11/08 | |
| DWG No | | | | REV | PAGE |
| 7749241-200 | | | | 0 | 1/1 |