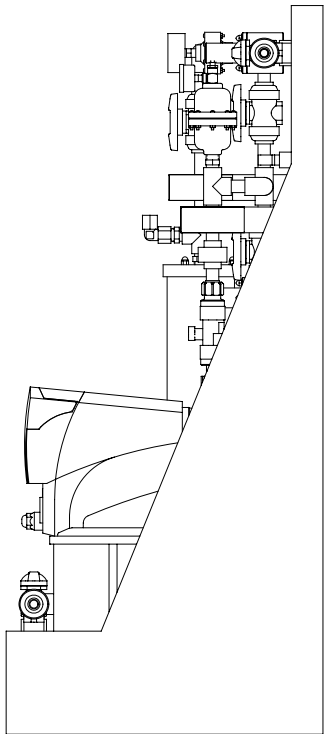
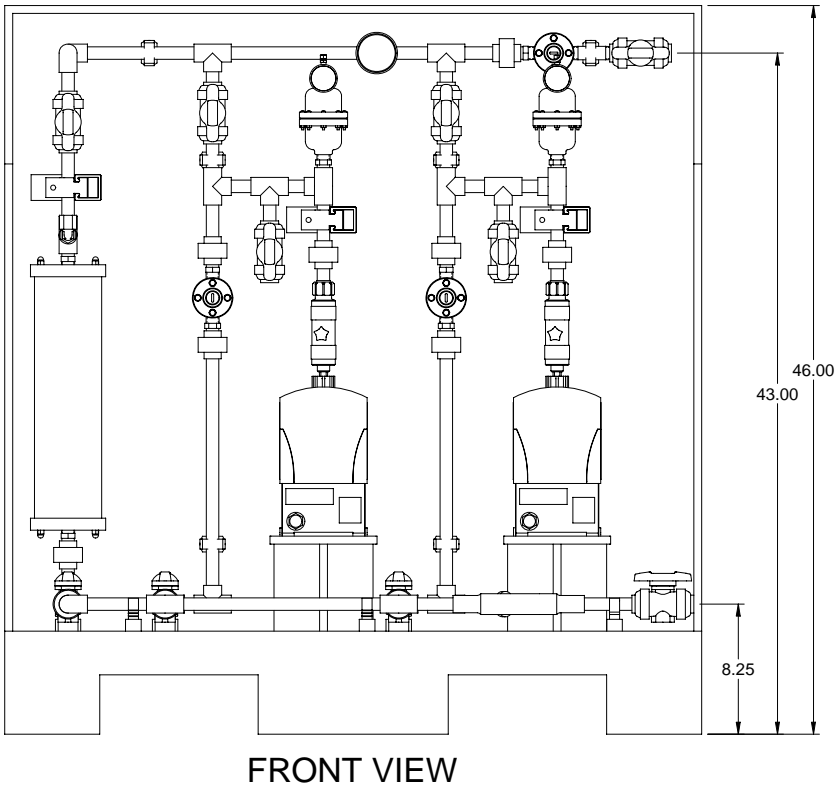
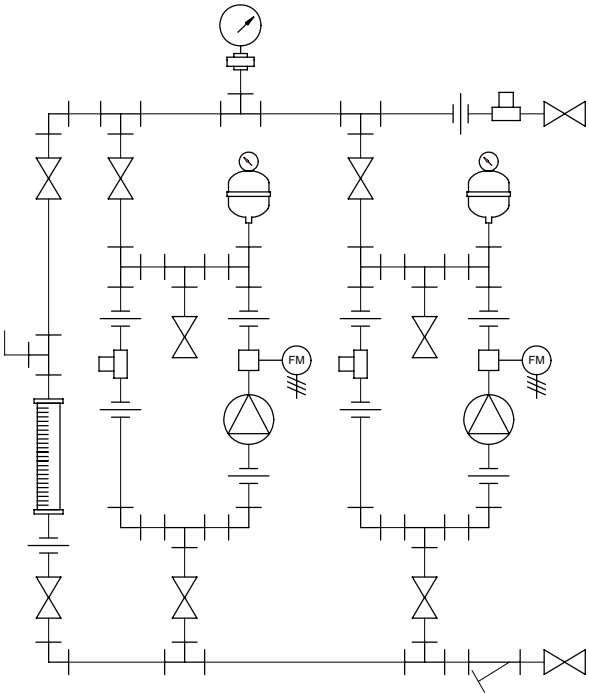


ISOMETRIC VIEW




SIDE VIEW



PIPING SCHEMATIC

- NOTES:
- ALL PIPING AND FITTINGS SHALL BE 1/2"(20MM) SR232 PVDF FUSION WELD WITH VITON SEALS UNLESS OTHERWISE REQUIRED BY COMPONENTS.
 - ALL DIMENSIONS ARE IN INCHES AND ARE SHOWN FOR REFERENCE ONLY.

0	01/21/08	FIRST ISSUE		GJS	
REV	DATE	DESCRIPTION		BY	APPD/REV/D
REVISIONS					
CUSTOMER PROMINENT FLUID CONTROLS INC. (PRE-ENGINEERED SYSTEM)					
JOB No		7749251		PURCHASE ORDER No	
TITLE SS2-G_FLOOR_050_PVDFVITON_PD_FM GENERAL ARRANGEMENT					
THIS DRAWING IS THE PROPERTY OF PROMINENT FLUID CONTROLS INC. AND SHALL NOT BE COPIED OR TRANSFERRED WITHOUT THE WRITTEN CONSENT OF PROMINENT FLUID CONTROLS INC.					
ENGINEERS SEAL		<div><div></div><div>ProMinent[®] THE PROMINENT GROUP OF COMPANIES</div></div>			
		PITTSBURGH, PA USA		WWW.PROMINENT.US	
		PROMINENT FLUID CONTROLS LTD. 490 SOUTHGATE DRIVE. GUELPH, ONTARIO, CANADA N1H 6J3 TEL. 519 836 5692 FAX. 519 836 5226		PROMINENT FLUID CONTROLS INC. RIDC PARK WEST 136 INDUSTRY DRIVE, PITTSBURGH P.A., USA. 15275 TEL. 412 787 2484 FAX. 412 787 0704	
		DESIGNED GJS		APPROVED	
		DRAWN GJS		SCALE N.T.S.	
		CHECKED DTH		DATE 01/21/08	
DWG No				REV	PAGE
7749251-200				0	1/1