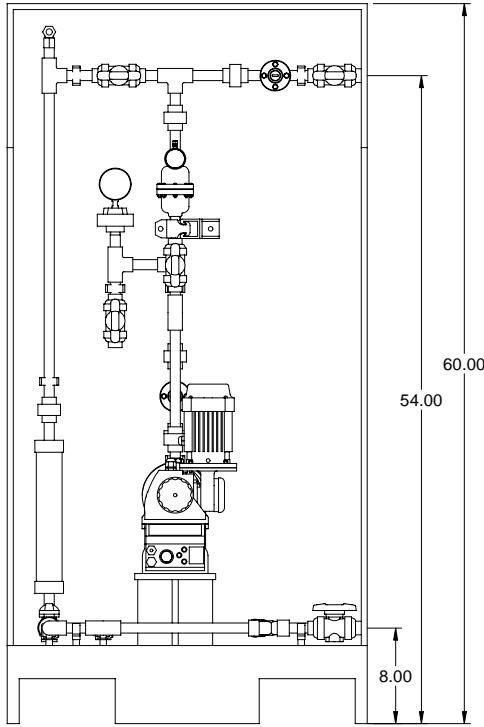
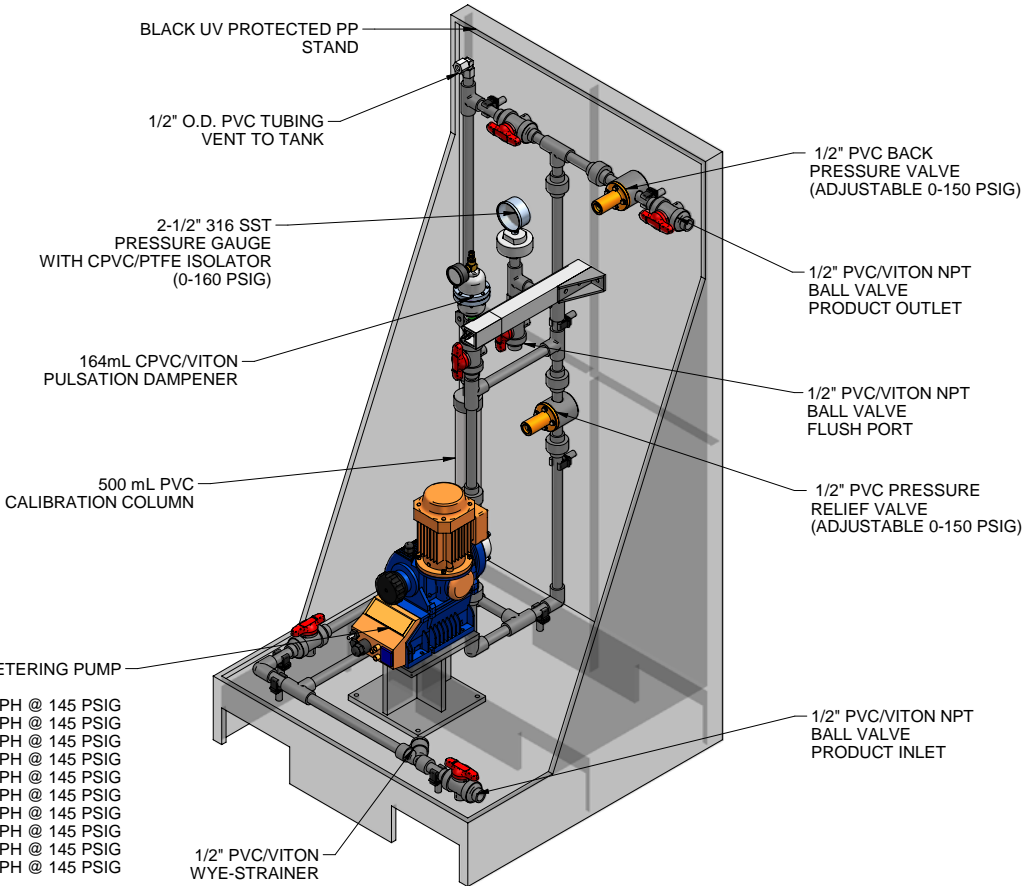


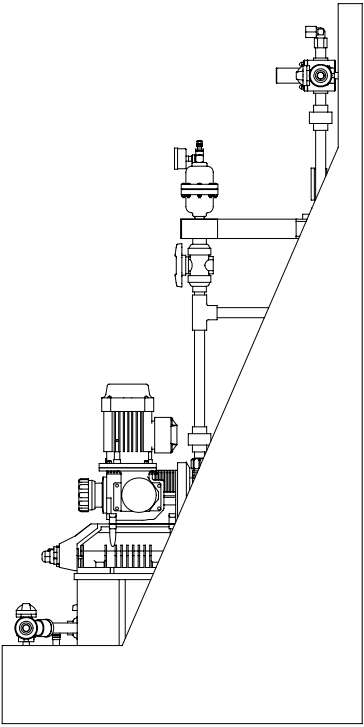
PLAN VIEW



FRONT VIEW

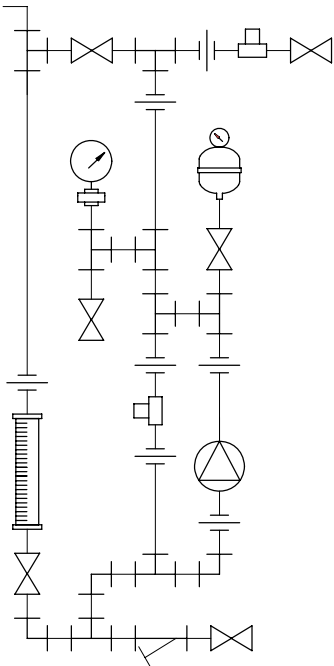


ISOMETRIC VIEW




SIDE VIEW

S1BAH10022 MAX. CAPACITY: 6.8 GPH @ 145 PSIG
S1CAH10022 MAX. CAPACITY: 6.8 GPH @ 145 PSIG
S1BAH10044 MAX. CAPACITY: 14.0 GPH @ 145 PSIG
S1CAH10044 MAX. CAPACITY: 14.0 GPH @ 145 PSIG
S1BAH10050 MAX. CAPACITY: 15.8 GPH @ 145 PSIG
S1CAH10050 MAX. CAPACITY: 13.2 GPH @ 145 PSIG
S1BAH12017 MAX. CAPACITY: 5.3 GPH @ 145 PSIG
S1CAH12017 MAX. CAPACITY: 5.3 GPH @ 145 PSIG
S1BAH12035 MAX. CAPACITY: 11.1 GPH @ 145 PSIG
S1CAH12035 MAX. CAPACITY: 11.1 GPH @ 145 PSIG



PIPING SCHEMATIC

- NOTES:
- ALL PIPING AND FITTINGS SHALL BE 1/2" SCH. 80 PVC SOCKET WELD WITH VITON SEALS UNLESS OTHERWISE REQUIRED BY COMPONENTS.
 - ALL DIMENSIONS ARE IN INCHES AND ARE SHOWN FOR REFERENCE ONLY.

A	05/13/09	REVISED PER BASIC SKID		ALS	
0	01/28/08	FIRST ISSUE		GJS	
REV	DATE	DESCRIPTION		BY	APPD/REV
REVISIONS					
CUSTOMER PROMINENT FLUID CONTROLS INC. (PRE-ENGINEERED SYSTEM)					
JOB No		7749255		PURCHASE ORDER No	
TITLE MS1A-A050_FLOOR_PVC\VITON_PD GENERAL ARRANGEMENT					
THIS DRAWING IS THE PROPERTY OF PROMINENT FLUID CONTROLS INC. AND SHALL NOT BE COPIED OR TRANSFERRED WITHOUT THE WRITTEN CONSENT OF PROMINENT FLUID CONTROLS INC.					
ENGINEERS SEAL		<div><div><div>ProMinent[®] THE PROMINENT GROUP OF COMPANIES</div></div><div><div>PITTSBURGH, PA USA</div><div>WWW.PROMINENT.US</div><div><div>PROMINENT FLUID CONTROLS LTD. 490 SOUTHGATE DRIVE. GUELPH, ONTARIO, CANADA N1H 6J3 TEL. 519 836 5692FAX. 519 836 5226</div><div><div>PROMINENT FLUID CONTROLS INC. RIDC PARK WEST 136 INDUSTRY DRIVE, PITTSBURGH P.A., USA. 15275 TEL. 412 787 2484FAX. 412 787 0704</div></div></div></div></div>			
DESIGNED		GJS		APPROVED	
DRAWN		GJS		SCALE N.T.S.	
CHECKED		DTH		DATE 01/28/08	
DWG No				REV	PAGE
7749255-200				A	1/1

MAXIMUM TESTING PRESSURE =	150 PSI
MAXIMUM OPERATING PRESSURE =	145 PSI
CHEMICAL SERVICE =	