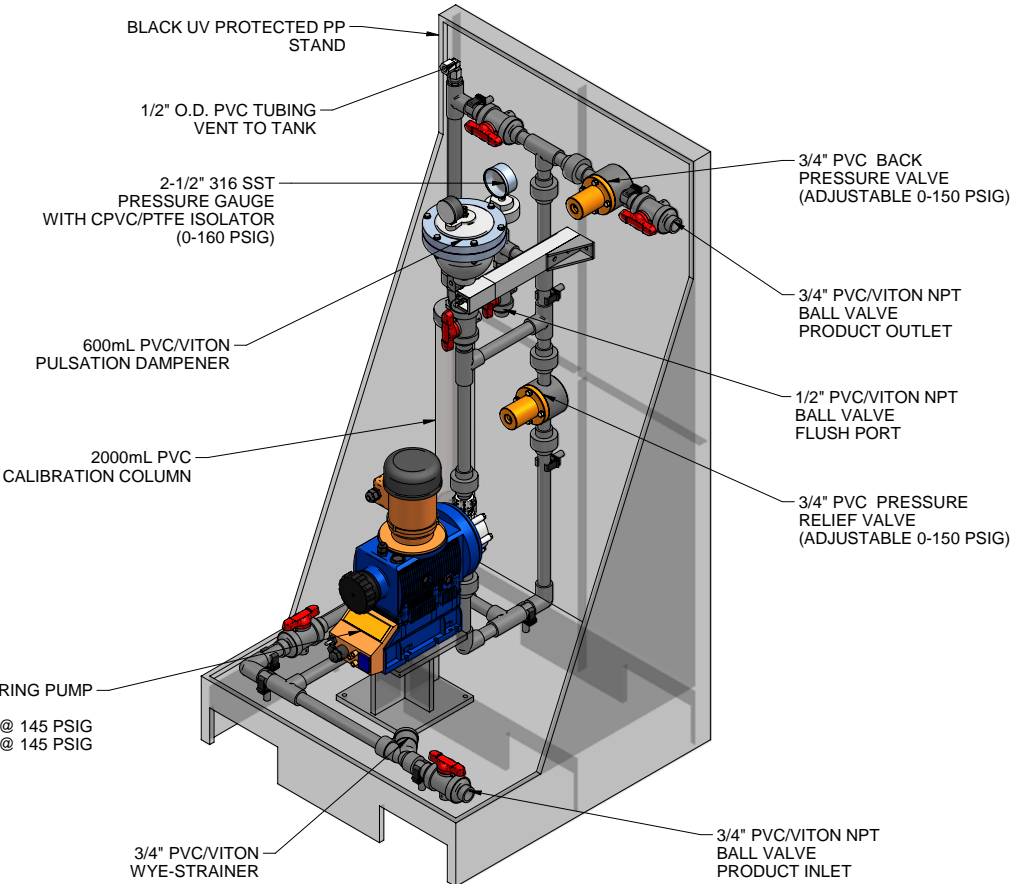
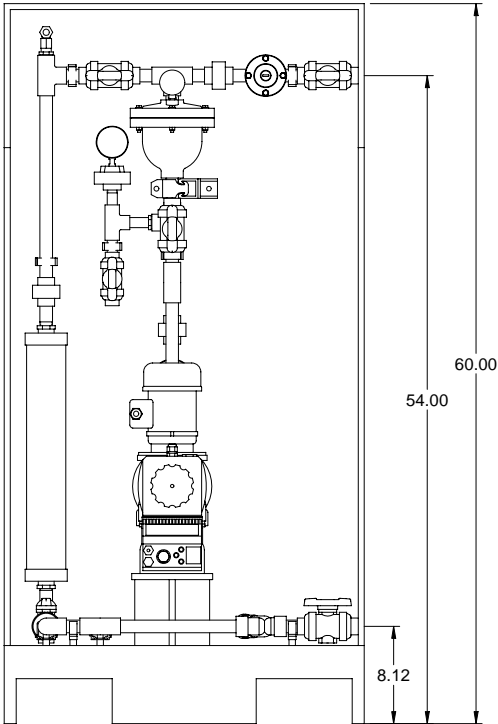


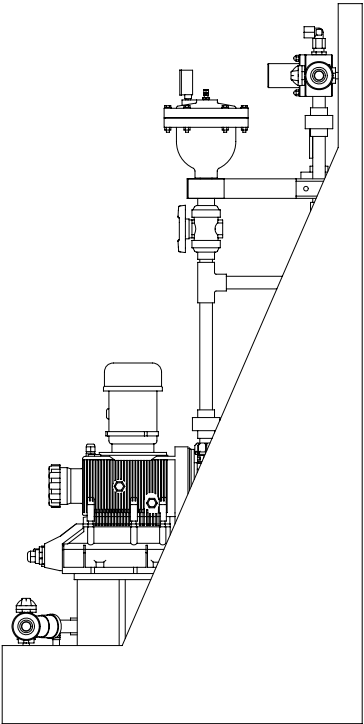
PLAN VIEW



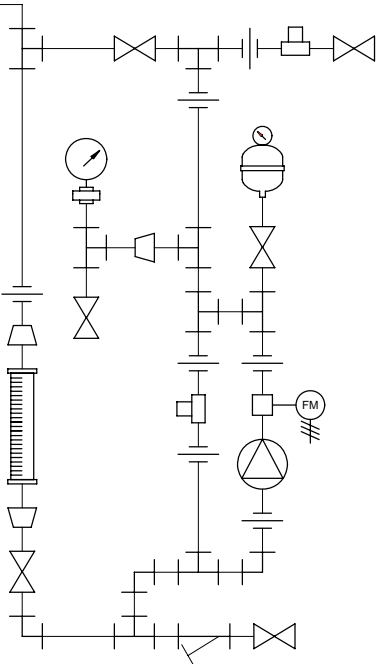
ISOMETRIC VIEW



FRONT VIEW



SIDE VIEW



PIPING SCHEMATIC

- NOTES:
- ALL PIPING AND FITTINGS SHALL BE 3/4" SCH. 80 PVC SOCKET WELD WITH VITON SEALS UNLESS OTHERWISE REQUIRED BY COMPONENTS.
  - ALL DIMENSIONS ARE IN INCHES AND ARE SHOWN FOR REFERENCE ONLY.

A	05/14/09	REVISED PER BASIC SKID		ALS	
0	01/28/08	FIRST ISSUE		GJS	
REV	DATE	DESCRIPTION		BY	APPD/REV'D
REVISIONS					
CUSTOMER <b>PROMINENT FLUID CONTROLS INC. (PRE-ENGINEERED SYSTEM)</b>					
JOB No		7749267		PURCHASE ORDER No	
TITLE <b>MS1B-C075_FLOOR_PVC\VITON_PD GENERAL ARRANGEMENT</b>					
THIS DRAWING IS THE PROPERTY OF PROMINENT FLUID CONTROLS INC. AND SHALL NOT BE COPIED OR TRANSFERRED WITHOUT THE WRITTEN CONSENT OF PROMINENT FLUID CONTROLS INC.					
ENGINEERS SEAL		<div><div><div><div>ptc</div><div>ProMinent</div></div><div><div>ProMinent<sup>®</sup></div><div>THE PROMINENT GROUP OF COMPANIES</div></div></div></div>			
		<div><div>PITTSBURGH, PA USA</div><div>WWW.PROMINENT.US</div></div>			
		<div><div><div>PROMINENT FLUID CONTROLS LTD. 490 SOUTHGATE DRIVE. GUELPH, ONTARIO, CANADA N1H 6J3 TEL. 519 836 5692      FAX. 519 836 5226</div><div><div>PROMINENT FLUID CONTROLS INC. RIDC PARK WEST 136 INDUSTRY DRIVE, PITTSBURGH P.A., USA. 15275 TEL. 412 787 2484      FAX. 412 787 0704</div></div></div></div>			
		<div><div>DESIGNED      <b>GJS</b></div><div>APPROVED</div></div>			
		<div><div>DRAWN      <b>GJS</b></div><div>SCALE      <b>N.T.S.</b></div></div>			
		<div><div>CHECKED      <b>DTH</b></div><div>DATE      <b>01/28/08</b></div></div>			
DWG No				REV	PAGE
7749267-200				A	1/1

MAXIMUM TESTING PRESSURE =	150 PSI
MAXIMUM OPERATING PRESSURE =	145 PSI
CHEMICAL SERVICE =	