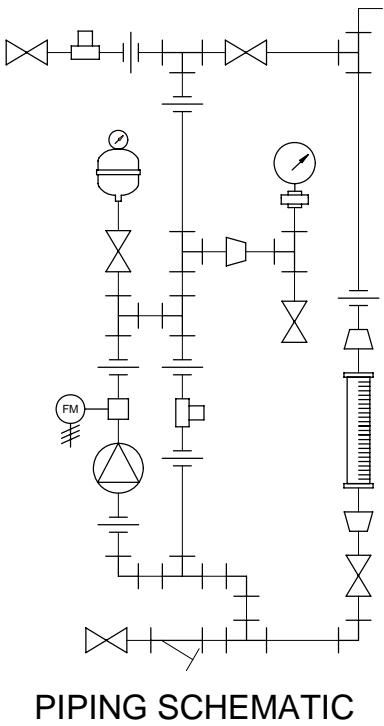

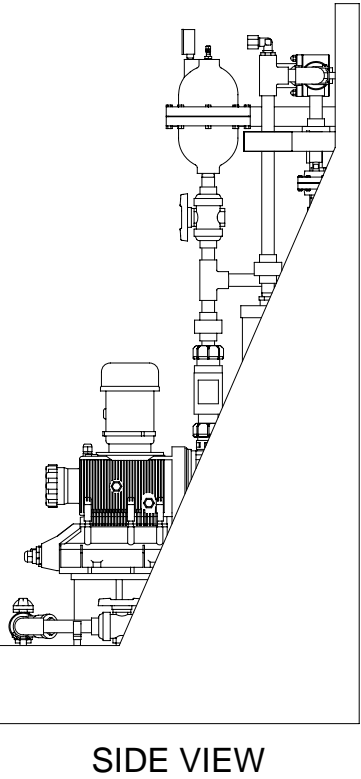
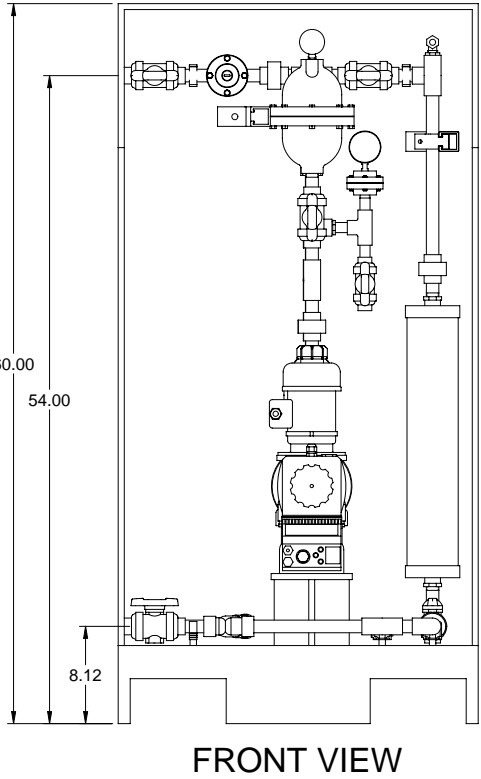


S2BAHM07220 MAX. CAPACITY: 69.7 GPH @ 100 PSIG  
S2CAHM07220 MAX. CAPACITY: 69.7 GPH @ 100 PSIG



- NOTES:
- ALL PIPING AND FITTINGS SHALL BE 3/4" SCH. 80 PVC SOCKET WELD WITH VITON SEALS UNLESS OTHERWISE REQUIRED BY COMPONENTS.
  - ALL DIMENSIONS ARE IN INCHES AND ARE SHOWN FOR REFERENCE ONLY.

0	06/05/08	FIRST ISSUE		GJS					
REV	DATE	DESCRIPTION		BY	APPD/REV/D				
REVISIONS									
CUSTOMER <b>PROMINENT FLUID CONTROLS INC. (PRE-ENGINEERED SYSTEM)</b>									
JOB No		7749270		PURCHASE ORDER No					
TITLE <b>MS1B-E075_FLOOR_PVC\VITON_PD_FM GENERAL ARRANGEMENT</b>									
THIS DRAWING IS THE PROPERTY OF PROMINENT FLUID CONTROLS INC. AND SHALL NOT BE COPIED OR TRANSFERRED WITHOUT THE WRITTEN CONSENT OF PROMINENT FLUID CONTROLS INC.									
ENGINEERS SEAL		<div><div></div><div><div>ProMinent®</div><div>THE PROMINENT GROUP OF COMPANIES</div></div></div> <div><div>PITTSBURGH, PA USA</div><div>WWW.PROMINENT.US</div><div>PROMINENT FLUID CONTROLS LTD. 490 SOUTHGATE DRIVE. GUELPH, ONTARIO, CANADA N1H 6J3 TEL. 519 836 5692      FAX. 519 836 5226</div><div>PROMINENT FLUID CONTROLS INC. RIDC PARK WEST 136 INDUSTRY DRIVE, PITTSBURGH P.A., USA. 15275 TEL. 412 787 2484      FAX. 412 787 0704</div></div>							
						DESIGNED	GJS	APPROVED	
						DRAWN	GJS	SCALE	N.T.S.
						CHECKED	DTH	DATE	06/05/08
DWG No		7749270-201		REV	0				
				PAGE	1/1				



MAXIMUM TESTING PRESSURE =	150 PSI
MAXIMUM OPERATING PRESSURE =	100 PSI
CHEMICAL SERVICE =	