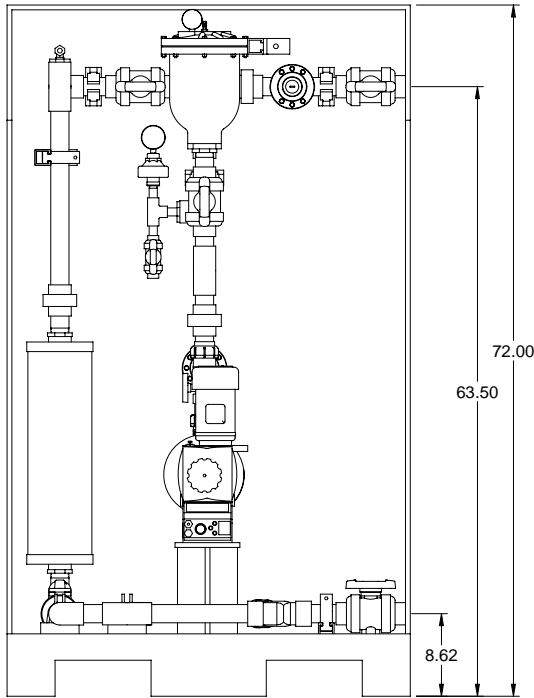
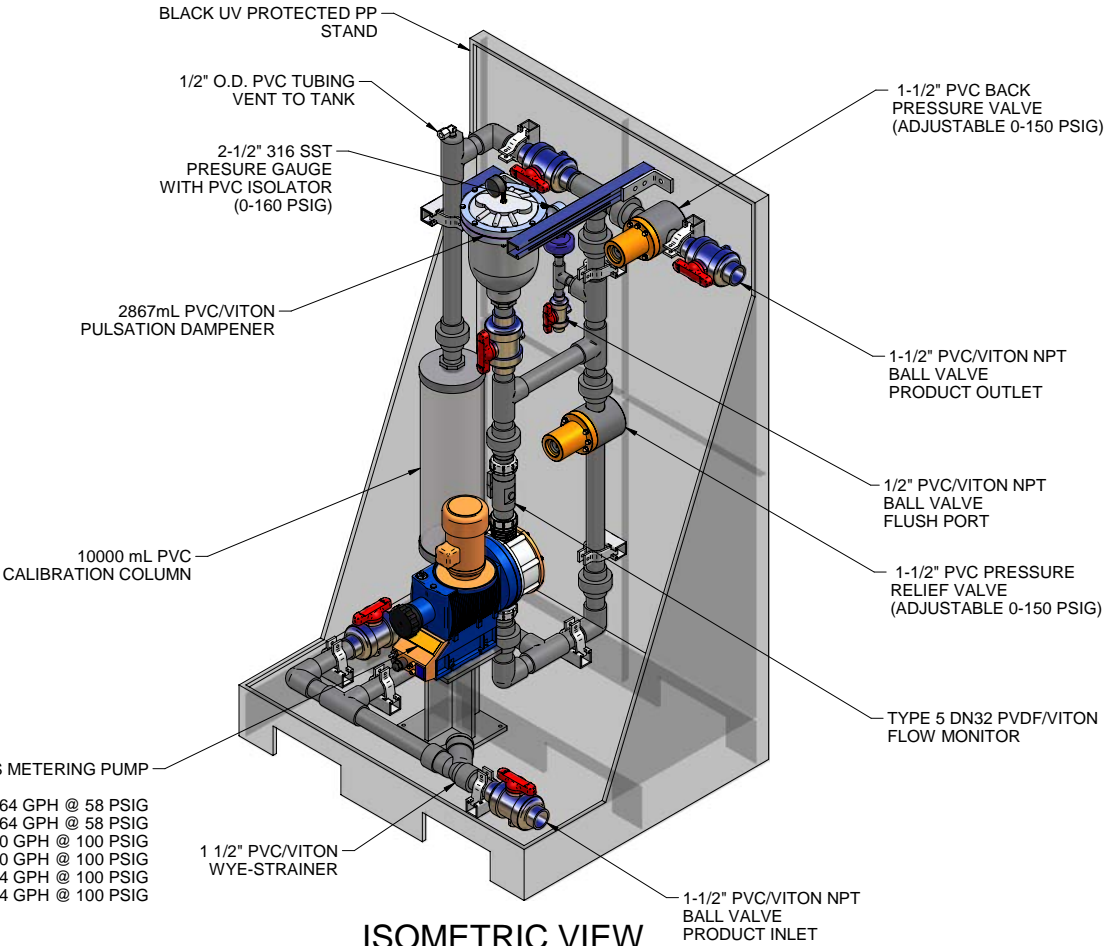


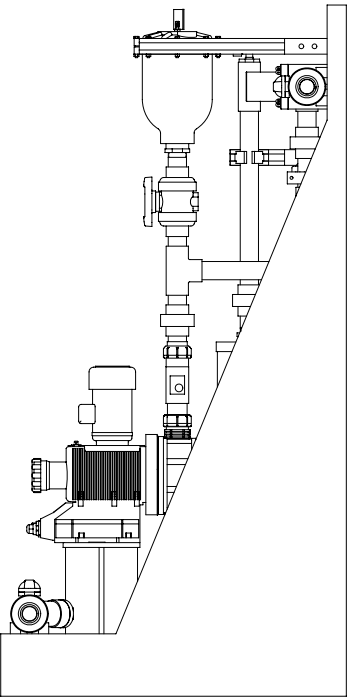
PLAN VIEW



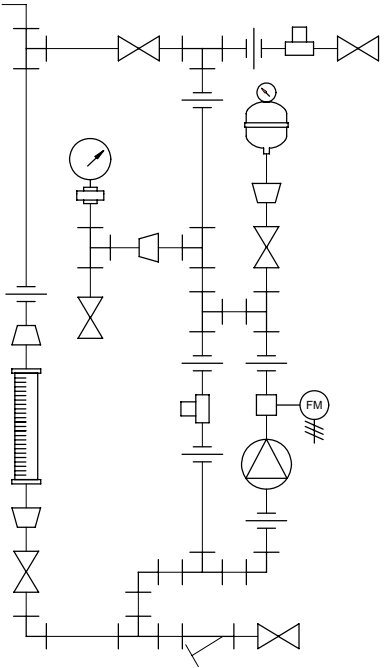
FRONT VIEW



ISOMETRIC VIEW




SIDE VIEW



PIPING SCHEMATIC

- NOTES:
- ALL PIPING AND FITTINGS SHALL BE 1-1/2" SCH. 80 PVC SOCKET WELD WITH VITON SEALS UNLESS OTHERWISE REQUIRED BY COMPONENTS.
 - ALL DIMENSIONS ARE IN INCHES AND ARE SHOWN FOR REFERENCE ONLY.

| | | | | | |
|--|----------|---|--|-------------------|----------|
| | | | | | |
| 0 | 01/28/08 | FIRST ISSUE | | GJS | |
| REV | DATE | DESCRIPTION | | BY | APPD/REV |
| REVISIONS | | | | | |
| CUSTOMER PROMINENT FLUID CONTROLS INC. (PRE-ENGINEERED SYSTEM) | | | | | |
| JOB No | | 7749303 | | PURCHASE ORDER No | |
| TITLE MS1D-A150_FLOOR_PVC\ITON_PD_FM GENERAL ARRANGEMENT | | | | | |
| THIS DRAWING IS THE PROPERTY OF PROMINENT FLUID CONTROLS INC. AND SHALL NOT BE COPIED OR TRANSFERRED WITHOUT THE WRITTEN CONSENT OF PROMINENT FLUID CONTROLS INC. | | | | | |
| ENGINEERS SEAL | | <div><div></div><div><div>ProMinent®</div><div>THE PROMINENT GROUP OF COMPANIES</div></div></div> <div><div>PITTSBURGH, PA USA</div><div>WWW.PROMINENT.US</div><div><div><div>PROMINENT FLUID CONTROLS LTD. 490 SOUTHGATE DRIVE. GUELPH, ONTARIO, CANADA N1H 6J3 TEL. 519 836 5692 FAX. 519 836 5226</div><div><div>PROMINENT FLUID CONTROLS INC. RIDC PARK WEST 136 INDUSTRY DRIVE, PITTSBURGH P.A., USA. 15275 TEL. 412 787 2484 FAX. 412 787 0704</div></div></div><div><div>DESIGNED</div><div>GJS</div><div>APPROVED</div></div><div><div>DRAWN</div><div>GJS</div><div>SCALE</div><div>N.T.S.</div></div><div><div>CHECKED</div><div>DTH</div><div>DATE</div><div>01/28/08</div></div></div></div> | | | |
| | | | | | |
| | | | | | |
| | | | | | |
| | | | | | |
| DWG No | | REV | | PAGE | |
| 7749303-200 | | 0 | | 1/1 | |

| | |
|------------------------------|------------|
| MAXIMUM TESTING PRESSURE = | 150 PSI |
| MAXIMUM OPERATING PRESSURE = | 58-100 PSI |
| CHEMICAL SERVICE = | |