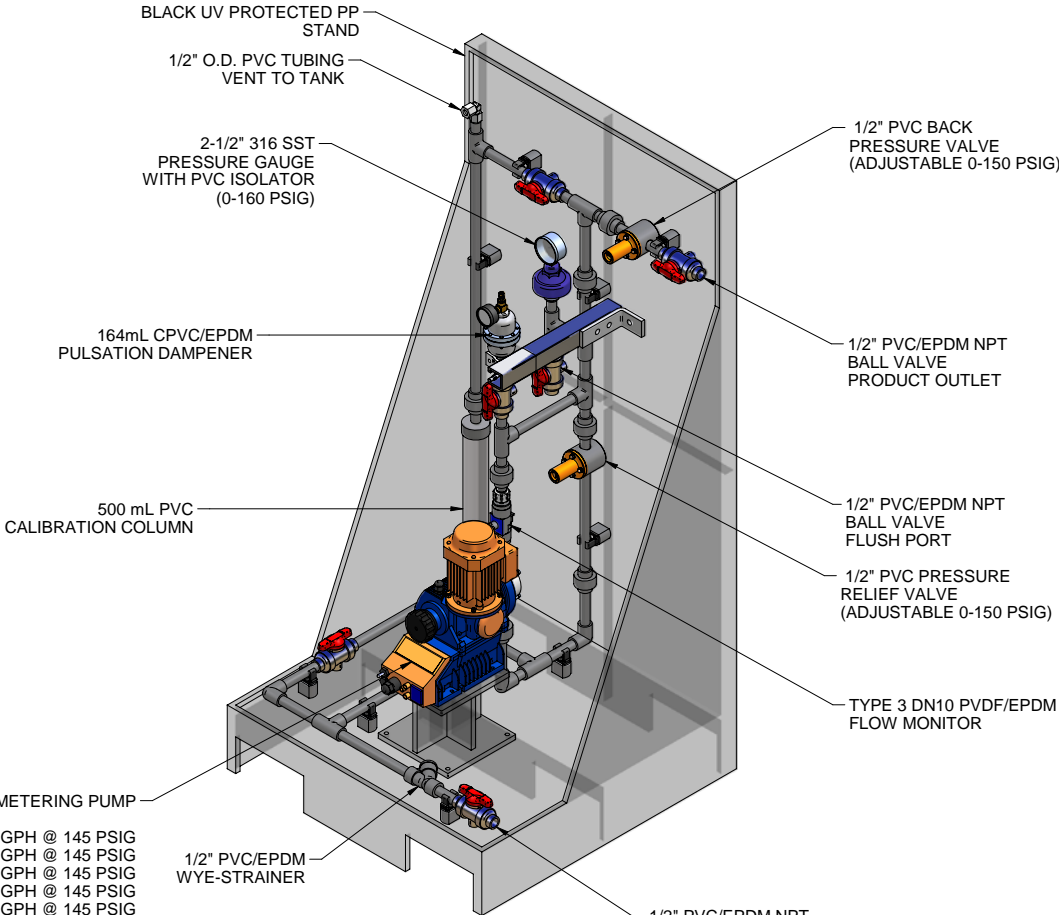
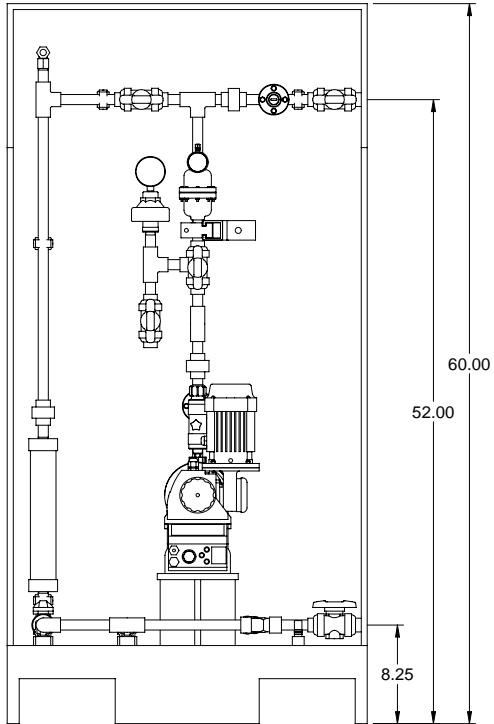


PLAN VIEW

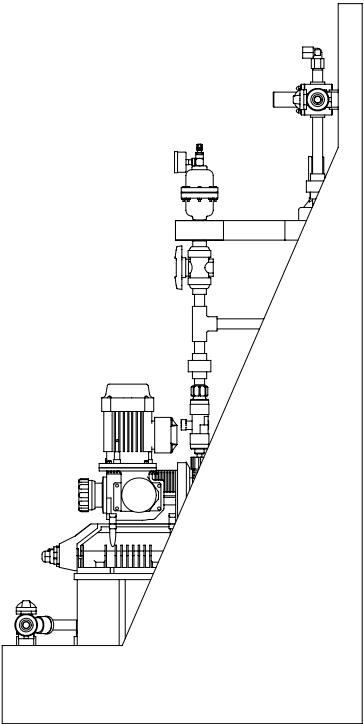


ISOMETRIC VIEW

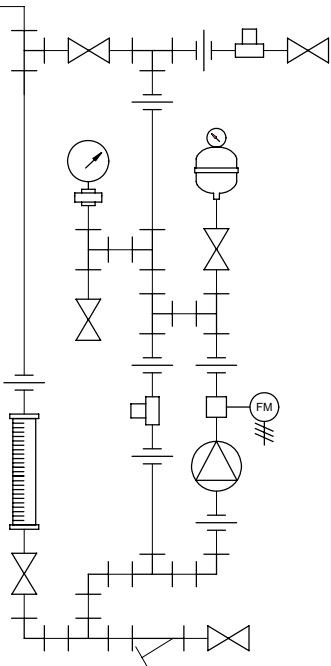
S1BAH10022 MAX. CAPACITY: 6.8 GPH @ 145 PSIG  
S1CAH10022 MAX. CAPACITY: 6.8 GPH @ 145 PSIG  
S1BAH10044 MAX. CAPACITY: 14.0 GPH @ 145 PSIG  
S1CAH10044 MAX. CAPACITY: 14.0 GPH @ 145 PSIG  
S1BAH10050 MAX. CAPACITY: 15.8 GPH @ 145 PSIG  
S1CAH10050 MAX. CAPACITY: 13.2 GPH @ 145 PSIG  
S1BAH12017 MAX. CAPACITY: 5.3 GPH @ 145 PSIG  
S1CAH12017 MAX. CAPACITY: 5.3 GPH @ 145 PSIG  
S1BAH12035 MAX. CAPACITY: 11.1 GPH @ 145 PSIG  
S1CAH12035 MAX. CAPACITY: 11.1 GPH @ 145 PSIG



FRONT VIEW



SIDE VIEW



PIPING SCHEMATIC

- NOTES:
- ALL PIPING AND FITTINGS SHALL BE 1/2" SCH. 80 PVC SOCKET WELD WITH EPDM SEALS UNLESS OTHERWISE REQUIRED BY COMPONENTS.
  - ALL DIMENSIONS ARE IN INCHES AND ARE SHOWN FOR REFERENCE ONLY.

0	03/24/08	FIRST ISSUE		GJS	
REV	DATE	DESCRIPTION		BY	APPD/REV'D
REVISIONS					
CUSTOMER		PROMINENT FLUID CONTROLS INC. (PRE-ENGINEERED SYSTEM)			
JOB No		7749307	PURCHASE ORDER No		
TITLE		MS1A-A050_FLOOR_PVC\EPDM_PD_FM GENERAL ARRANGEMENT			
THIS DRAWING IS THE PROPERTY OF PROMINENT FLUID CONTROLS INC. AND SHALL NOT BE COPIED OR TRANSFERRED WITHOUT THE WRITTEN CONSENT OF PROMINENT FLUID CONTROLS INC.					
ENGINEERS SEAL		<div><div><div>ptc</div><div>ProMinent</div></div><div><div>ProMinent®</div><div>THE PROMINENT GROUP OF COMPANIES</div></div></div>			
		PITTSBURGH, PA USA		WWW.PROMINENT.US	
		PROMINENT FLUID CONTROLS LTD. 490 SOUTHGATE DRIVE. GUELPH, ONTARIO, CANADA N1H 6J3 TEL. 519 836 5692      FAX. 519 836 5226		PROMINENT FLUID CONTROLS INC. RIDC PARK WEST 136 INDUSTRY DRIVE, PITTSBURGH P.A., USA. 15275 TEL. 412 787 2484      FAX. 412 787 0704	
		DESIGNED      GJS		APPROVED	
		DRAWN      GJS		SCALE      N.T.S.	
		CHECKED      DTH		DATE      03/24/08	
DWG No			7749307-200		REV 0
					PAGE 1/1

MAXIMUM TESTING PRESSURE =	150 PSI
MAXIMUM OPERATING PRESSURE =	145 PSI
CHEMICAL SERVICE =	