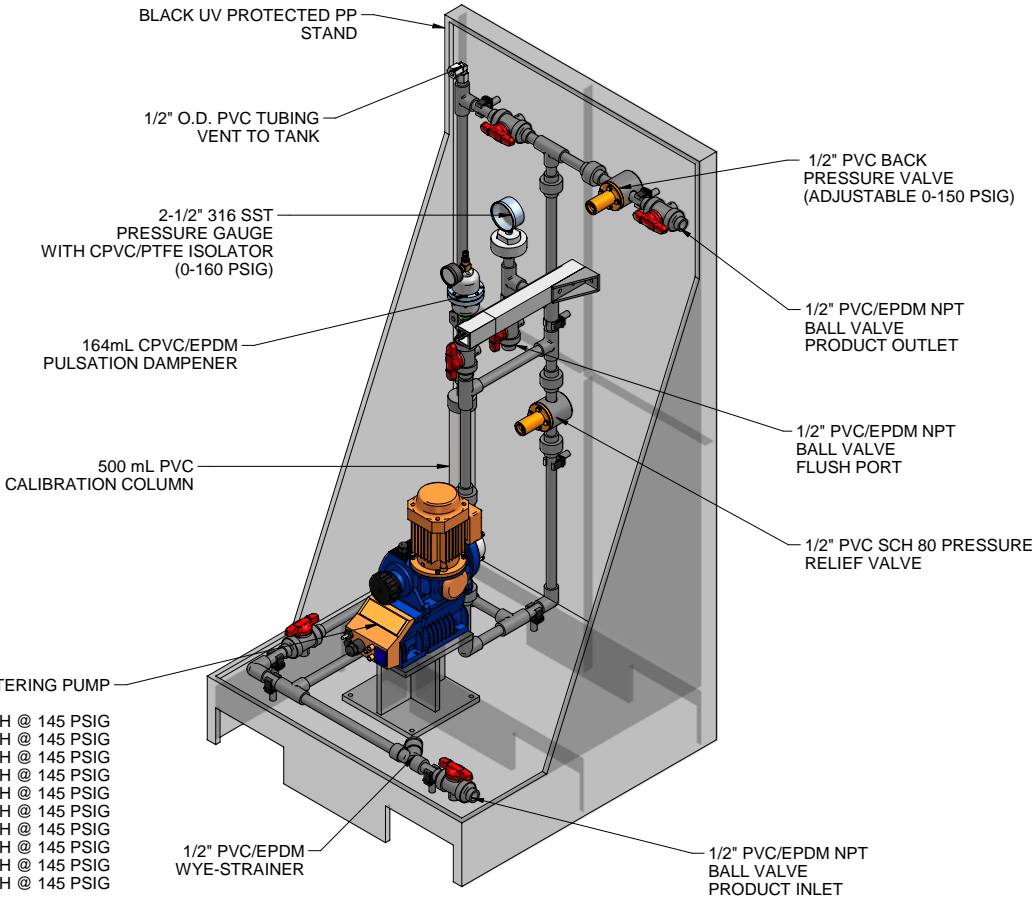
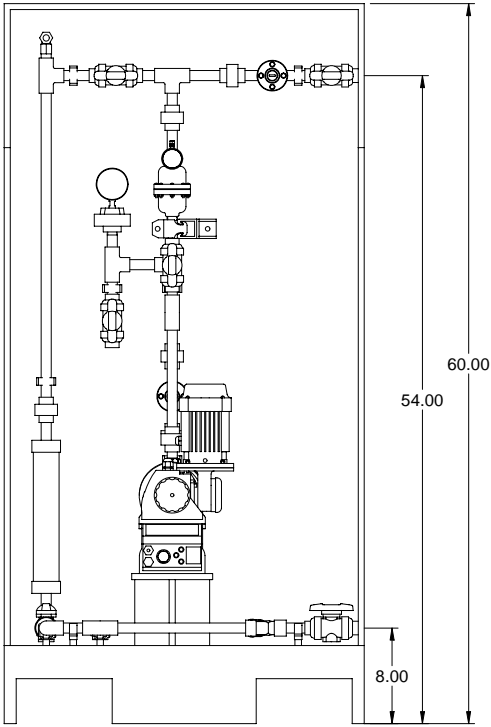


PLAN VIEW

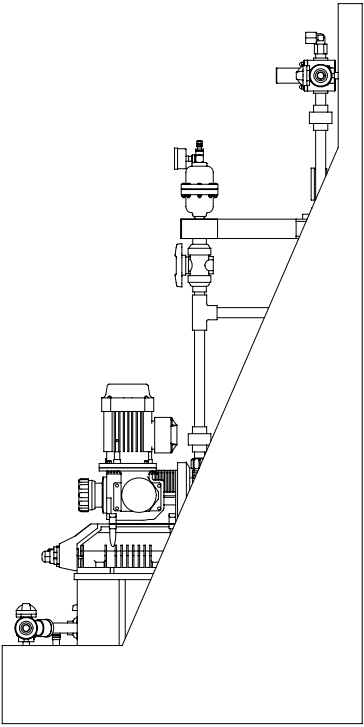


ISOMETRIC VIEW

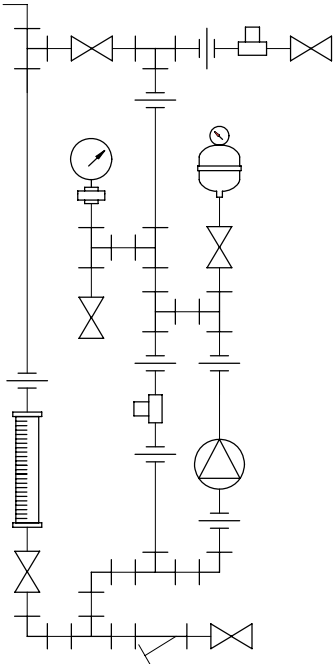
S1BAH10022 MAX. CAPACITY: 6.8 GPH @ 145 PSIG
S1CAH10022 MAX. CAPACITY: 6.8 GPH @ 145 PSIG
S1BAH10044 MAX. CAPACITY: 14.0 GPH @ 145 PSIG
S1CAH10044 MAX. CAPACITY: 14.0 GPH @ 145 PSIG
S1BAH10050 MAX. CAPACITY: 15.8 GPH @ 145 PSIG
S1CAH10050 MAX. CAPACITY: 13.2 GPH @ 145 PSIG
S1BAH12017 MAX. CAPACITY: 5.3 GPH @ 145 PSIG
S1CAH12017 MAX. CAPACITY: 5.3 GPH @ 145 PSIG
S1BAH12035 MAX. CAPACITY: 11.1 GPH @ 145 PSIG
S1CAH12035 MAX. CAPACITY: 11.1 GPH @ 145 PSIG



FRONT VIEW



SIDE VIEW



PIPING SCHEMATIC

NOTES:

- ALL PIPING AND FITTINGS SHALL BE 1/2" SCH. 80 PVC SOCKET WELD WITH EPDM SEALS UNLESS OTHERWISE REQUIRED BY COMPONENTS.
- ALL DIMENSIONS ARE IN INCHES AND ARE SHOWN FOR REFERENCE ONLY.

A	05/15/09	REVISED PER BASIC SKID	ALS		
0	03/24/08	FIRST ISSUE	GJS		
REV	DATE	DESCRIPTION	BY	APPD	REVD

REVISIONS

CUSTOMER **PROMINENT FLUID CONTROLS INC.
(PRE-ENGINEERED SYSTEM)**

JOB No **7749308** PURCHASE ORDER No

TITLE **MS1A-A050_FLOOR_PVC/EPDM_PD
GENERAL ARRANGEMENT**

THIS DRAWING IS THE PROPERTY OF PROMINENT FLUID CONTROLS INC. AND SHALL NOT BE COPIED OR TRANSFERRED WITHOUT THE WRITTEN CONSENT OF PROMINENT FLUID CONTROLS INC.

ENGINEERS SEAL	<div><div>ptc</div><div>ProMinent</div></div> <div><div>ProMinent[®]</div><div>THE PROMINENT GROUP OF COMPANIES</div></div>	
	PITTSBURGH, PA USA	WWW.PROMINENT.US
	PROMINENT FLUID CONTROLS LTD. 490 SOUTHGATE DRIVE. GUELPH, ONTARIO, CANADA N1H 6J3 TEL. 519 836 5692 FAX. 519 836 5226	PROMINENT FLUID CONTROLS INC. RIDC PARK WEST 136 INDUSTRY DRIVE, PITTSBURGH P.A., USA. 15275 TEL. 412 787 2484 FAX. 412 787 0704
	DESIGNED GJS	APPROVED
	DRAWN GJS	SCALE N.T.S.
	CHECKED DTH	DATE 03/24/08

MAXIMUM TESTING PRESSURE =	150 PSI
MAXIMUM OPERATING PRESSURE =	145 PSI
CHEMICAL SERVICE =	

DWG No	7749308-200	REV	A	PAGE	1/1
--------	-------------	-----	---	------	-----